

7789230

7789230
12/28/2000 02:44 PM 37.00
Book - 8411 Pg - 3634-3643
NANCY WORKMAN
RECORDER, SALT LAKE COUNTY, UTAH
FIRST AMERICAN TITLE
BY: ZJM, DEPUTY - WI 10 P.

**When Recorded, Please Mail and
Send Tax Notices to:**

Kennecott Utah Copper Corporation
P. O. Box 6001
Magna, UT 84044-6001

QUITCLAIM DEED

UNITED TELEVISION, INC., a Delaware corporation, with offices located in Salt Lake County, State of Utah, Grantor, hereby quitclaims and releases to KENNECOTT UTAH COPPER CORPORATION, a Delaware corporation, with its principal office in Salt Lake County, State of Utah, Grantee, for the sum of TEN DOLLARS (\$10.00) and other good and valuable consideration, the receipt and adequacy of which are hereby acknowledged, all of Grantor's right, title and interest in and to that certain real property located in Salt Lake County, State of Utah, described in Exhibit "A" hereto and by reference made a part hereof.

#456556

6th IN WITNESS WHEREOF, the Grantor has executed this Quitclaim Deed on the
day of September, 2000.

UNITED TELEVISION, INC.

By Stephen J. Cohen
Its VP GEN. MGR.

BK 8411 PG 3634

EXHIBIT "A"

A right-of-way easement, sometimes known as the "Old Access Road," the description of which is part of a survey prepared by Marcus A. Twedt, Land Surveyor, and is included in its entirety in Schedule 1 attached hereto and by this reference made a part hereof.

TOGETHER WITH all of Grantor's right, title and interest in and to Sections 31, 35 and 36, Township 2 South, Range 2 West, Salt Lake Base and Meridian, but EXCEPTING THEREFROM a 33-foot wide right-of-way upon which a private, graded access road is now located, referred to as the "TV Tower Access Road" in and as-built survey prepared by Vaughn E. Butler, Registered Land Surveyor, and filed, together with a "Survey Map" based upon such as-built survey, in the office of the County Surveyor for Salt Lake County, Utah on December 29, 1994 as File No. SV9412094, a copy of which Survey Map is attached as Schedule 2 hereto and by this reference made a part hereof.

SCHEDULE 1 TO EXHIBIT "A"

RIGHT OF WAY DESCRIPTION

A strip of land 33 feet wide, the center line of which is described:
Beginning at the saddle between the lower sites of Channel 2 and Channel 4, more specifically 930.62 feet South and 818.74 feet West of the Northeast corner of Section 34, Township 2 South, Range 3 West, Salt Lake Base and Meridian and running:

Thence North 66°31' East 210.94 feet; thence South 77°19' East 536.18 feet; thence North 88°17' East 208.56 feet; thence South 67°03' East 407.84 feet; thence South 60°02' East 235.86 feet; thence South 84°44' East 188.84 feet; thence South 50°23' East 254.39 feet; thence South 39°37' East 391.48 feet; thence South 53°02' East 458.25 feet; thence South 55°56' East 122.52 feet; thence North 63°53' West 621.11 feet; thence North 70°57' West 374.91 feet; thence North 72°48' West 91.36 feet; thence South 68°29' West 209.89 feet; thence North 68°29' West 282.38 feet; thence North 89°18' West 434.97 feet; thence South 21°40' West 45.09 feet; thence North 88°17' East 177.54 feet; thence South 63°27' East 226.94 feet; thence South 48°17' East 295.95 feet; thence South 61°39' East 107.37 feet; thence North 87°03' East 123.81 feet; thence South 38°14' East 428.48 feet; thence South 50°38' East 95.30 feet; thence South 69°29' East 160.68 feet; thence South 33°37' East 234.49 feet; thence South 49°58' East 115.82 feet; thence South 73°23' East 141.18 feet; thence South 81°37' East 177.88 feet; thence South 53°04' East 151.58 feet; thence South 59°17' East 335.73 feet; thence South 33°06' East 391.52 feet; thence South 48°32' East 126.65 feet; thence South 31°25' West 46.83 feet; thence North 46°57' West 353.84 feet; thence North 61°53' West 165.72 feet; thence South 88°13' West 136.65 feet; thence North 68°56' West 195.36 feet; thence South 72°40' West 196.16 feet; thence South 89°28' West 172.88 feet; thence South 74°59' West 180.43 feet; thence North 65°26' West 95.14 feet; thence South 14°02' West 74.68 feet; thence North 88°59' East 94.77 feet; thence North 89°47' East 140.84 feet; thence South 56°11' East 176.49 feet; thence South 81°37' East 177.68 feet; thence South 53°04' East 151.58 feet; thence South 58°56' East 47.92 feet; thence South 82°32' East 128.62 feet; thence South 24°24' East 270.62 feet; thence South 01°48' East 187.42 feet; thence South 12°44' West 196.39 feet; thence South 08°31' East 95.78 feet; thence South 23°47' East 163.45 feet; thence South 56°04' East 103.51 feet; thence South 51°40' East 145.31 feet; thence South 64°27' East 107.08 feet; thence North 84°40' East 30.29 feet; thence North 44°16' East 38.19 feet; thence North 04°35'

BK8411PG3637

East 103.74 feet; thence North 18°17' East 155.13 feet; thence North 16°41' East 104.21 feet; thence North 46°54' East 165.08 feet; thence South 70°00' East 113.07 feet; thence South 58°08' East 145.91 feet; thence South 64°20' East 380.90 feet; thence South 55°10' East 118.69 feet; thence North 56°28' East 65.77 feet; thence North 02°53' West 148.90 feet; thence North 20°36' West 150.96 feet; thence North 17°59' East 107.32 feet; thence North 07°41' East 108.83 feet; thence North 10°03' East 92.38 feet; thence North 27°37' East 63.35 feet; thence North 43°11' East 65.85 feet; thence North 59°53' East 76.27 feet; thence North 84°00' East 55.93 feet; thence South 80°01' East 95.46 feet; thence North 85°55' East 66.77 feet; thence North 73°39' East 48.35 feet; thence North 29°40' East 109.61 feet; thence North 44°29' East 46.92 feet; thence North 70°42' East 180.38 feet; thence North 85°28' East 52.65 feet; thence South 74°01' East 60.70 feet; thence South 40°15' East 83.77 feet; thence South 48°11' East 67.53 feet; thence South 53°45' East 70.73 feet; thence South 73°30' East 330.59 feet; thence South 75°09' East 130.15 feet; thence South 70°04' East 216.63 feet; thence South 22°45' East 380.61 feet; thence South 25°35' East 183.52 feet; thence South 35°15' East 180.78 feet; thence South 53°15' East 51.19 feet; thence South 78°46' East 81.40 feet; thence North 74°37' East 168.78 feet; thence North 44°54' East 105.78 feet; thence North 13°32' East 147.28 feet; thence North 25°11' East 129.90 feet; thence North 08°07' East 94.50 feet; thence North 20°15' West 70.44 feet; thence North 39°12' West 162.64 feet; thence North 48°16' West 225.08 feet; thence North 05°28' East 145.11 feet; thence North 51°22' West 80.13 feet; thence North 52°09' West 212.57 feet; thence North 12°17' West 45.68 feet; thence North 19°53' East 42.28 feet; thence North 64°36' East 90.70 feet; thence North 53°40' East 161.07 feet; thence North 60°37' East 97.02 feet; thence North 89°07' East 131.89 feet; thence South 72°10' East 235.19 feet; thence North 78°41' East 246.16 feet; thence North 31°23' East 186.11 feet; thence North 50°41' East 164.70 feet; thence South 57°51' East 330.35 feet; thence South 63°05' East 295.21 feet; thence South 74°29' East 180.88 feet; thence South 59°40' East 211.83 feet; thence South 77°03' East 130.57 feet; thence North 58°54' East 77.57 feet; thence North 36°14' East 91.45 feet; thence North 47°11' East 95.49 feet; thence North 10°44' East 153.19 feet; thence North 56°36' East 143.15 feet; thence North 39°05' East 196.19 feet; thence North 16°48' East 79.41 feet; thence North 06°06' East 170.53 feet; thence North 73°41' East 209.44 feet; thence North 61°34' East 271.57 feet; thence North 28°04' East 152.58 feet; thence North 64°45' East 116.02 feet; thence South 79°21' East 163.45 feet; thence South 40°18' East 259.69 feet; thence South 57°11' East 215.30 feet; thence South 48°04' East 212.60 feet; thence South 53°13' East 473.71 feet; thence South 35°23' East 103.94 feet; thence South 31°30' East 309.38 feet; thence South 54°45' East 206.42 feet;

BK84 | 1 PG 36 38

thence South 61°50' East 579.13 feet; thence South 36°29' East 239.05 feet; thence South 62°01' East 199.66 feet; thence South 83°54' East 379.37 feet; thence South 38°29' East 81.30 feet; thence South 74°10' East 196.69 feet; thence South 88°33' East 484.12 feet; thence South 75°21' East 877.35 feet; thence South 85°37' East 158.27 feet; thence South 73°19' East 387.28 feet; thence South 82°02' East 420.05 feet; thence South 77°50' East 179.50 feet; thence South 74°30' East 196.35 feet; thence South 86°43' East 156.05 feet; thence North 83°21' East 163.06 feet; thence South 63°43' East 161.34 feet; thence South 33°07' East 127.38 feet; thence South 05°09' East 126.53 feet; thence South 29°09' East 329.61 feet; thence South 36°10' East 234.71 feet; thence South 38°40' East 329.95 feet; thence South 30°22' East 174.41 feet; thence South 39°35' East 156.68 feet; thence South 06°52' East 102.14 feet; thence South 24°02' East 188.53 feet; thence South 42°10' East 123.90 feet; thence South 48°43' East 311.38 feet; thence South 76°40' East 223.45 feet; thence South 76°03' East 358.05 feet; thence North 75°38' East 88.14 feet; thence North 21°17' East 68.81 feet; thence North 01°35' East 91.15 feet; thence North 23°20' East 58.42 feet; thence North 62°17' East 84.93 feet; thence North 85°01' East 364.64 feet; thence South 79°18' East 264.07 feet; thence South 81°58' East 615.28 feet; thence South 88°05' East 158.68 feet; thence South 89°25' East 317.95 feet; thence South 85°08' East 304.19 feet; thence North 89°48' East 252.55 feet; thence South 79°58' East 99.48 feet; thence South 73°13' East 153.80 feet; thence South 83°20' East 128.81 feet; thence North 81°28' East 193.94 feet; thence North 82°06' East 209.34 feet; thence North 64°09' East 143.57 feet; thence North 70°25' East 275.70 feet; thence North 85°48' East 284.06 feet; thence North 81°30' East 226.60 feet; thence South 85°17' East 214.44 feet; thence North 79°24' East 80.24 feet; thence North 65°48' East 115.60 feet; thence North 75°41' East 355.46 feet; thence North 81°03' East 539.10 feet; thence North 81°03' East more or less 539.10 feet to intersection with East line of Section 5. Contains more or less 30 acres. All switchbacks to maintain a minimum radius of 50 feet. Basis of bearing is geodetic 77°46'24" from Larson reference No. 3 to Larson triangulation station.

Mt. Vision Access Road, situated in Sections 5 and 6, Township 3 South, Range 2 West, Section 31, Township 2 South, Range 2 West; and Sections 34, 35, and 36, Township 2 South, Range 3 West, Salt Lake Base and Meridian.

Together with Mt. Vision Road Extension from the point of beginning in the saddle to the prime lease ground of United Television, June, 1982.

A strip of land 33 feet wide, the center line of which is described as follows:

Beginning at the saddle between the lower sites of Channel 2 and

Channel 4, more specifically, 932.62 feet South and 818.74 feet West of the Northeast corner of Section 34, Township 2 South, Range 3 West, Salt Lake Base and Meridian, and running thence N 46°51' West 80.94 feet; thence N 22° 33' East 74.08 feet; thence S 74°39' East 71.19 feet; thence N 79°58' East 220.64 feet; thence N 86°44' East 221.17 feet; thence N 80°19' East 387.74 feet; thence N 87°37' East 88.73 feet to the South line of United Television Prime Lease. Length of above-described road is 1,144.45 feet.

Channel 2 Access Road, June, 1982:

Beginning 1,730.88 feet South and 1,403.96 feet West of the Northeast corner of Section 34, Township 2 South, Range 3 West, Salt Lake Base and Meridian, at the intersection of the Channel 2 and Mt. Nelson access roads, a strip of land 33 feet wide, the center of which runs:

Thence N 59°01' East 97.29 feet; thence N 59°45' East 32.23 feet; thence N 39°14' East 56.42 feet; thence N 04°06' East 474.08 feet; thence N 01°50' West 231.44 feet; thence N 06°05' West 80.05 feet; thence N 45°00' West 67.67 feet to the West line of the Northeast quarter of the Northeast quarter of Section 34, Road Length, 1,039.18 feet.

Description of Mt. Vision Road Extension from the point of beginning in the saddle to the West line of the Southwest quarter of the Northeast quarter of Section 34, June 1982.

A strip of land 33 feet wide, the center line of which is described as follows:

Beginning at the saddle between the lower sites of Channel 2 and Channel 4, more specifically 930.62 feet South and 818.74 feet West of the Northeast corner of Section 34, Township 2 South, Range 3 West, Salt Lake Base and Meridian, and running thence S 64°16' West 195.32 feet; thence S 26°46' West 212.04 feet; thence S 15°24' West 240.91 feet; thence S 21°46' West 254.60 feet; thence S 69°41' West 165.60 feet; thence N 84°28' West 198.00 feet; thence N 80°41' West 116.93 feet; thence N 87°48' West 57.21 feet; thence S 77°07' West 203.03 feet; thence N 83°59' West 319.35 feet; thence N 70°22' West 233.91 feet; thence N 86°45' West 78.03 feet; to the West line of the Southwest quarter of the Northeast quarter of said Section 34, Road Length 2,274.93 feet.

The above and foregoing legal description has been made and certified by Marcus A. Twedt, a Registered Land Surveyor, Certificate No. 4269 and set in forth in Instrument No. 3686126 in Book 5385, Page 1452 recorded on June 21, 1982 in the Records of Salt Lake County Recorder.

BK 84 | PG 3640

WITH REFERENCE TO THE FOLLOWING TAX PARCEL NOS.:

Tax ID No. 19-34-200-004-0000.
Tax ID No. 19-34-300-003-0000.
Tax ID No. 19-34-200-006-0000.
Tax ID No. 19-35-100-004-0000.
Tax ID No. 19-36-100-006-0000.
Tax ID No. 19-36-200-002-0000.
Tax ID No. 19-36-200-003-0000.
Part of Utah State Tax Parcel Nos. 92-60-445-000-0050 through 92-60-445-000-0450.
Tax ID No. 20-31-100-001-0000.
State Tax ID No. 92-60-445-000-0350.
Tax ID No. 20-30-200-001-0000.
Tax ID No. 20-29-300-004-0000.
Tax ID No. 20-29-300-005-0000.
Tax ID No. 20-29-400-004-0000.
State Tax ID No. 92-60-445-000-0350.
Tax ID No. 20-28-400-003-0000.
Tax ID No. 20-28-400-004-0000.
Tax ID No. 20-28-300-002-0000.
Tax ID No. 20-28-200-004-0000.

SCHEDULE 2 TO EXHIBIT "A"

[COPY OF VAUGHN BUTLER SURVEY MAP]

BK8411PG3642

KNARRATIVE

THIS SURVEY WAS PERFORMED TO ESTABLISH AN ACCURATE LOCATION OF THE "TV TOWER" ACCESS ROAD AND TO PROVIDE A BASIS OF RECORD FOR THE MODIFICATION OF THE UTAH STATE HIGHWAY U-111, TOGETHER WITH THE PERMIT SECTION CORNERS AND MARKING CLAIMS, TO PROVIDE DESCRIPTIONS FOR TRANSFERRING THE PROPERTY TO THE STATE OF UTAH. THE SURVEY IS A CONTINUATION OF THE SURVEY OF SAID ROAD, ALSO SEE CONTINUATION OF NARRATIVE ON PAGE 16.

BASES OF BEARINGS

THE BASES OF BEARINGS FOR THIS SURVEY IS THE KENNECOTT COPPER MINERALIZATION MODIFICATION DRAWING NO. SEC-022.

SURVEYORS CERTIFICATE

I, Nathan E. Butler, do hereby certify that I am a Licensed Land Surveyor of the State of Utah. I further certify that by authority of the Owners, I have made a survey of the tract of land represented by this plat and accompanying descriptions and that it is as shown.

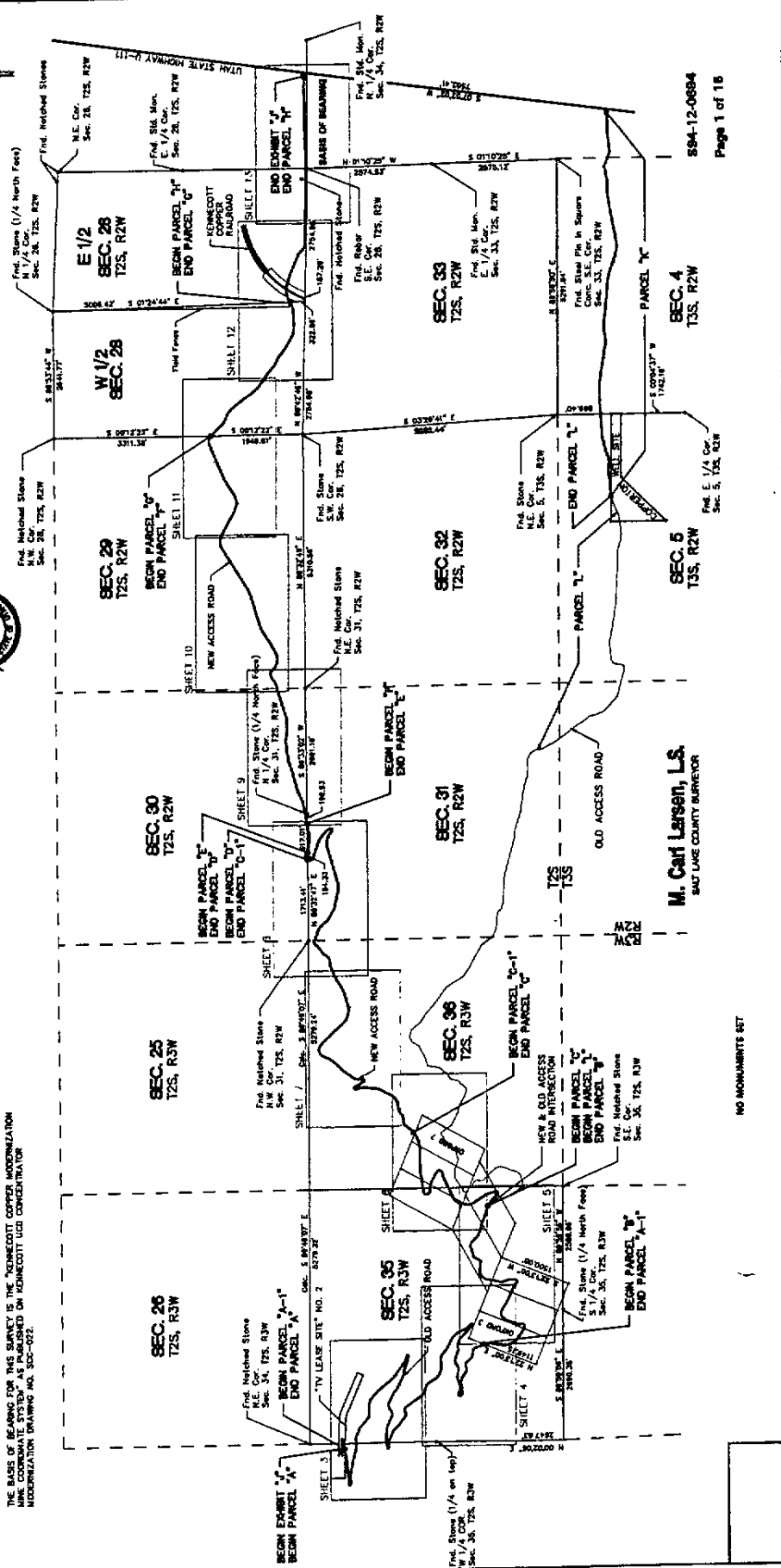
DATE: 03-23-2025

Nathan E. Butler
Nathan E. Butler



DESCRIPTION

SEE SHEET 15



M. Carl Larsen, L.S.
SALT LAKE COUNTY SURVEYOR

NO MONUMENTS SET

584-12-0684
Page 1 of 16

<p>HORROCKS & ENGINEERS, INC. SURVEYORS (801) 758-7558</p>	<p>ONE BEST MARK NORTHWEST CORNER OF BT 6463 (801) 758-7558</p>	<p>"TV TOWER" ACCESS ROAD SITUATE IN (T25, R2W) & (T25, R3W) & (T25, R2W) S.L.B. 64.</p>	<p>ANDERSON AND WATKINS LAW OFFICES KENNECOTT CORPORATION</p>	<p>INDEX TO SHEETS AND DESCRIPTIONS</p>	<p>DATE: 03/23/25 JOB NO: 584-12-0684 SHEET NO: 1 OF 16</p>
	<p>DATE: 03/23/25</p>	<p>DATE: 03/23/25</p>	<p>DATE: 03/23/25</p>	<p>DATE: 03/23/25</p>	<p>DATE: 03/23/25</p>

**POOR COPY -
CO. RECORDER**

8K84 | 1 PG3643