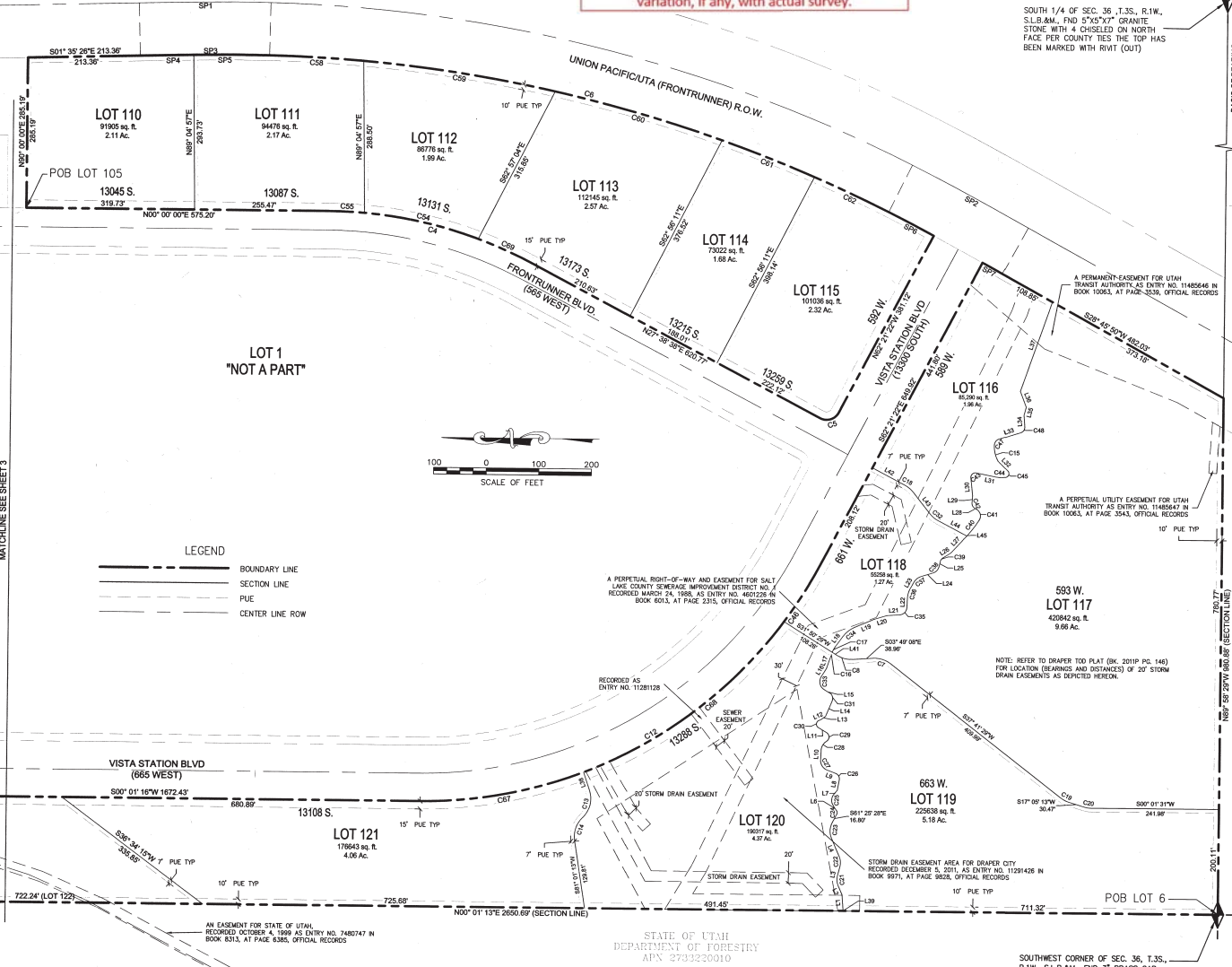




This plat is made solely for the purpose of assisting in locating the property and Cottonwood Title Insurance Agency, Inc. assumes no liability for variation, if any, with actual survey.

SOUTH 1/4 OF SEC. 36 T.3S., R.1W., S.L.B.&M., FND 5"X5"X7" GRANITE STONE WITH A CHISELED ON NORTH FACE PER COUNTY TIES THE TOP HAS BEEN MARKED WITH RIVET (OUI)



**LEGEND**

BOUNDARY LINE

SECTION LINE

PUE

CENTER LINE ROW

LINE	LENGTH	DIRECTION
L1	30.27	N85° 32' 29"E
L2	19.30	N66° 13' 11"E
L3	16.82	S79° 59' 27"E
L4	39.92	N66° 23' 47"E
L6	10.69	N65° 04' 21"E
L7	10.07	S50° 12' 03"E
L8	19.87	S79° 42' 67"E
L9	20.30	N21° 16' 69"E
L10	21.29	S67° 38' 32"E
L11	19.22	N31° 04' 37"E
L12	4.09	S23° 51' 12"E
L13	11.11	S37° 34' 07"E
L14	30.39	S47° 33' 09"E
L15	15.99	N31° 18' 19"E
L16	17.62	S57° 40' 13"E
L17	25.80	S71° 09' 52"E
L18	24.19	S64° 02' 39"E
L19	41.07	S22° 57' 22"E
L20	25.17	S19° 43' 54"E
L21	25.31	S63° 51' 29"E
L22	16.82	S87° 30' 21"E
L23	16.81	S60° 31' 04"E
L24	23.84	S16° 50' 05"E
L25	12.49	S78° 20' 23"E
L26	17.41	N32° 14' 03"W
L27	44.19	S47° 09' 59"E
L28	7.60	N33° 19' 29"E
L29	13.37	S65° 14' 22"E
L30	35.30	N63° 44' 12"E
L31	32.84	S11° 10' 17"W
L32	25.27	N44° 18' 44"E
L33	44.27	S17° 34' 49"E
L34	22.86	N85° 59' 52"E
L35	15.72	S74° 22' 27"E
L36	32.98	N66° 17' 16"E
L37	178.91	S70° 49' 42"E
L38	36.22	S71° 22' 07"W
L39	0.85	N70° 52' 02"E
L41	10.97	N61° 09' 29"E
L42	70.32	S27° 38' 38"W
L43	36.76	S51° 38' 38"W
L44	11.94	S27° 38' 38"W
L45	1.60	S47° 09' 59"E

CURVE	LENGTH	RADIUS	DELTA	CHORD	DISTANCE
C4	402.87	635.00	27° 30' 30"	N13° 49' 19"E	368.97
C5	46.84	76.00	89° 00' 00"	N17° 21' 22"W	36.77
C6	1303.48	2764.79	23° 21' 16"	S19° 50' 12"W	1215.52
C7	36.22	56.00	41° 32' 37"	S16° 56' 11"W	36.44
C8	31.12	50.00	33° 39' 37"	S14° 04' 40"W	30.82
C9	928.65	893.00	82° 22' 38"	S11° 10' 03"E	883.46
C10	50' 04' 17"	50.00	84° 42' 23"	N70° 15' 41"W	53.51
C11	52.12	55.74	33° 02' 47"	N78° 19' 48"E	31.87
C12	7.49	48.22	8° 54' 12"	S11° 50' 32"E	7.49
C13	11.32	48.22	13° 28' 51"	S60° 46' 03"E	11.29
C14	20.94	50.00	34° 10' 00"	S39° 30' 39"W	20.79
C15	17.98	50.00	20° 36' 16"	S27° 23' 17"W	17.88
C16	14.89	50.00	17° 02' 42"	S26° 33' 22"W	14.82
C17	18.29	39.99	30° 11' 20"	N89° 00' 43"E	17.66
C18	18.62	38.36	37° 36' 51"	N85° 12' 12"E	18.20
C19	29.32	34.47	48° 44' 44"	S65° 47' 51"E	28.40
C20	8.08	7.08	65° 23' 44"	N61° 48' 13"E	7.69
C21	24.49	18.09	77° 36' 49"	S89° 00' 44"E	22.66
C22	15.00	10.87	79° 13' 36"	N60° 52' 59"E	13.86
C23	21.46	18.87	59° 10' 16"	N59° 49' 10"E	20.32
C24	18.22	31.10	49° 29' 51"	S33° 49' 53"E	17.87
C25	19.76	9.82	117° 52' 09"	N60° 00' 07"E	16.49
C26	7.82	129° 59' 15"	S84° 20' 49"E	13.09	
C27	14.72	13.57	62° 08' 53"	N82° 40' 43"E	14.01
C28	20.94	50.00	24° 00' 00"	S39° 38' 38"W	20.79
C29	28.77	17.78	62° 43' 18"	N75° 58' 00"E	28.73
C30	26.86	49.89	33° 06' 12"	S39° 30' 28"E	26.40
C31	19.96	14.23	79° 53' 41"	S47° 38' 37"E	18.47
C32	37.49	297° 13' 43"	S79° 09' 27"E	16.30	
C33	16.87	25.27	38° 29' 38"	S39° 59' 59"E	16.52
C34	15.98	15.92	56° 25' 23"	S48° 12' 43"E	15.06
C35	7.19	12.22	33° 39' 34"	S49° 03' 05"E	7.08
C36	36.99	226.21	9° 19' 59"	S52° 44' 46"E	36.69
C37	14.47	89° 17' 40"	N77° 58' 22"E	20.32	
C38	9.73	10.36	93° 47' 02"	N67° 58' 00"E	8.37
C39	15.99	8.90	100° 22' 19"	S38° 59' 00"E	13.67
C40	23.49	56.24	23° 53' 42"	S33° 38' 13"W	23.32
C41	16.34	7.30	527° 19' 38"	S72° 01' 27"E	13.18
C42	120.19	853.00	9° 42' 41"	S68° 10' 16"W	120.07
C43	15.32	12.81	69° 30' 03"	S22° 22' 17"E	14.39
C44	12.26	10.19	69° 13' 30"	S59° 28' 10"E	11.53
C45	67.38	635.00	4° 37' 17"	N62° 18' 39"E	67.32
C46	178.22	2764.79	3° 42' 51"	S22° 45' 39"W	178.19
C47	395.18	2764.79	7° 39' 02"	S26° 26' 50"W	398.67
C48	330.27	2764.79	6° 50' 39"	S15° 41' 46"W	330.07
C49	188.07	2764.79	3° 59' 05"	S21° 04' 39"W	189.02
C50	155.14	2764.79	3° 12' 58"	S24° 38' 39"W	155.22
C51	37° 30'	853.00	21° 16' 02"	S19° 38' 15"E	315.64
C52	482.09	853.00	32° 22' 50"	S37° 29' 13"E	479.70
C53	113.16	635.00	7° 49' 54"	N29° 45' 41"E	113.08

SPIRAL	LENGTH	RADIUS	A	OFFSET
SP1	250.09	284.79	446.20	0.0
SP2	250.09	284.79	446.20	0.0
SP3	245.84	2764.79	-	-100.00
SP4	101.77	2764.79	-	-100.00
SP5	143.87	2764.79	-	-100.00
SP6	96.65	2764.79	-	-100.00
SP7	42.97	2764.79	-	-100.00

STATE OF UTAH  
DEPARTMENT OF FORESTRY  
M-N 5756520610

STATE OF UTAH  
DEPARTMENT OF FORESTRY  
APN 2793320010

SOUTHWEST CORNER OF SEC. 36, T.3S., R.1W., S.L.B.&M., FND 3" BRASS CAP

12-03-2013

DATE	DATE	SCALE	PROJECT NUMBER
		1" = 100'	8041010100

**DRAPER TOD SECOND AMENDMENT  
DRAPER, UTAH**

**PSOMAS**  
4178 Riverwood Road, Suite 200  
360 Lone City, Utah 84123  
(801) 245-9777 (801) 210-5162 (FAX)

DESIGNED	BDA
DRAWN	TDM
CHECKED	BDA

SHEET

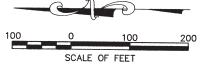
23

This plat is made solely for the purpose of assisting in locating the property and Cottonwood Title Insurance Agency, Inc. assumes no liability for variation, if any, with actual survey.

UNION PACIFIC/CUTA (FRONTRUNNER) R.O.W.

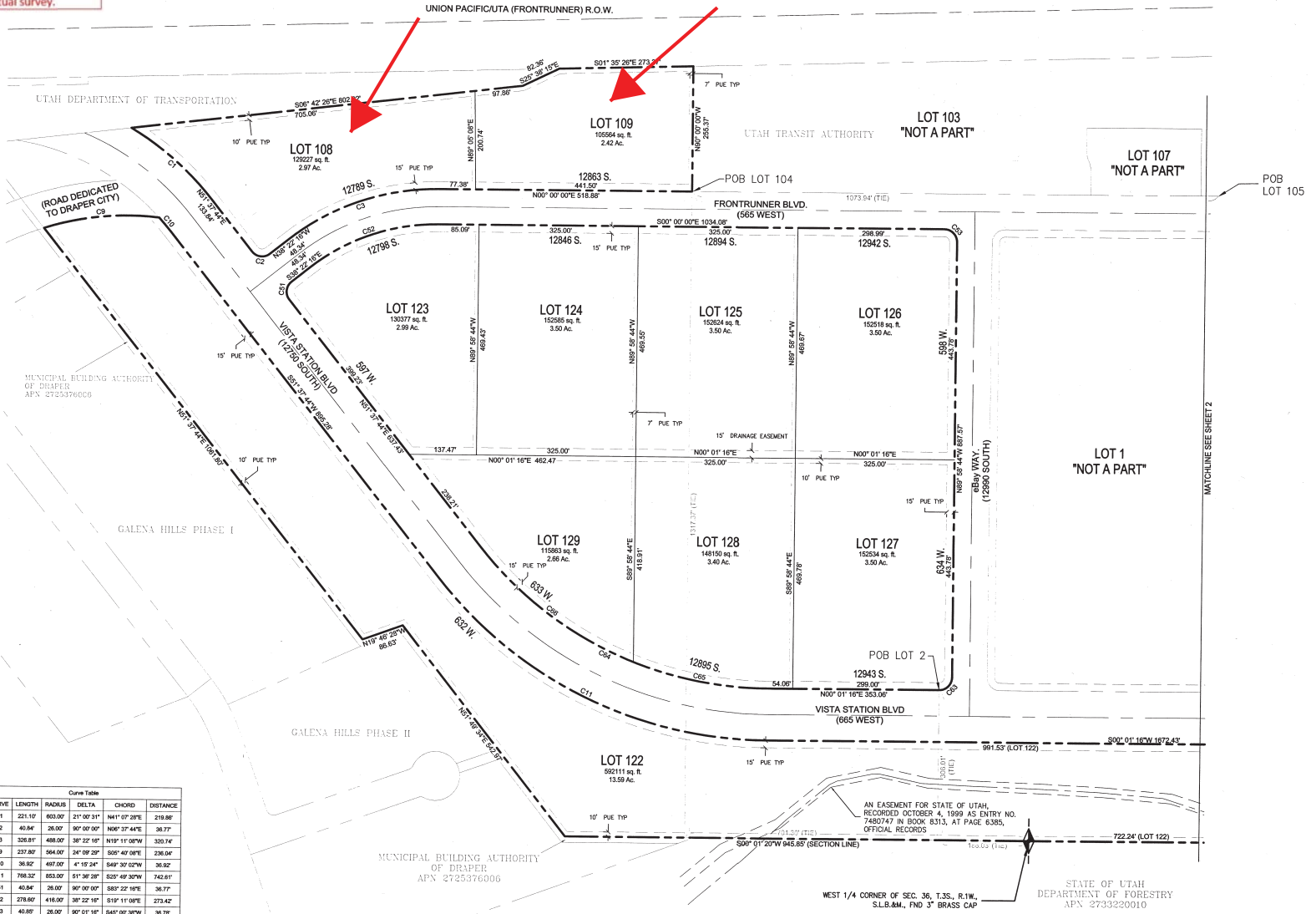
UTAH DEPARTMENT OF TRANSPORTATION

UTAH TRANSIT AUTHORITY



LEGEND  
 --- BOUNDARY LINE  
 --- SECTION LINE  
 - - - PUE  
 --- CENTER LINE ROW

Curve Table					
CURVE	LENGTH	RADIUS	DELTA	CHORD	DISTANCE
C1	241.10'	603.00'	217° 09' 51"	M41° 07' 20"	219.86'
C2	40.84'	26.00'	90° 00' 00"	N08° 37' 45"	36.77'
C3	326.81'	489.00'	38° 22' 15"	N10° 11' 00"W	330.74'
C9	237.80'	564.00'	24° 09' 20"	S06° 40' 02"W	236.04'
C10	36.92'	497.00'	4° 19' 24"	S49° 30' 02"W	36.92'
C11	768.32'	853.00'	51° 38' 20"	S20° 49' 30"W	742.61'
C51	40.84'	26.00'	90° 00' 00"	S83° 22' 16"	36.77'
C52	278.60'	418.00'	38° 22' 16"	S19° 11' 00"E	273.42'
C53	40.80'	26.00'	90° 01' 18"	S45° 00' 30"W	36.78'
C50	40.84'	26.00'	90° 00' 00"	M44° 58' 44"W	36.77'
C54	672.34'	741.00'	51° 38' 20"	N05° 49' 30"E	650.33'
C55	277.27'	747.00'	21° 18' 00"	N10° 38' 18"E	276.66'
C56	396.57'	747.00'	30° 20' 20"	N08° 27' 30"E	390.97'



AN EASEMENT FOR STATE OF UTAH, RECORDED OCTOBER 4, 1999 AS ENTRY NO. 7480747 IN BOOK 8313, AT PAGE E385, OFFICIAL RECORDS

STATE OF UTAH  
 DEPARTMENT OF FORESTRY  
 APN: 273320010

WEST 1/4 CORNER OF SEC. 36, T.3S., R.1W., S.L.B.M., FND 3" BRASS CAP

DRAPER TOD SECOND AMENDMENT  
 DRAPER, UTAH

**PSOMAS**  
 4178 Riverwood Road, Suite 200  
 8601 Lone City, Utah, 84123  
 (801) 240-5177 (801) 270-5182 (FAX)

DATE: 12-03-2013  
 PLOT DATE:  
 SCALE: 1" = 100'  
 SHEET NUMBER: BDM/C101/100

RECORDED: BDA  
 DATED: TDM  
 CHECKED: BDA

SHEET: 3