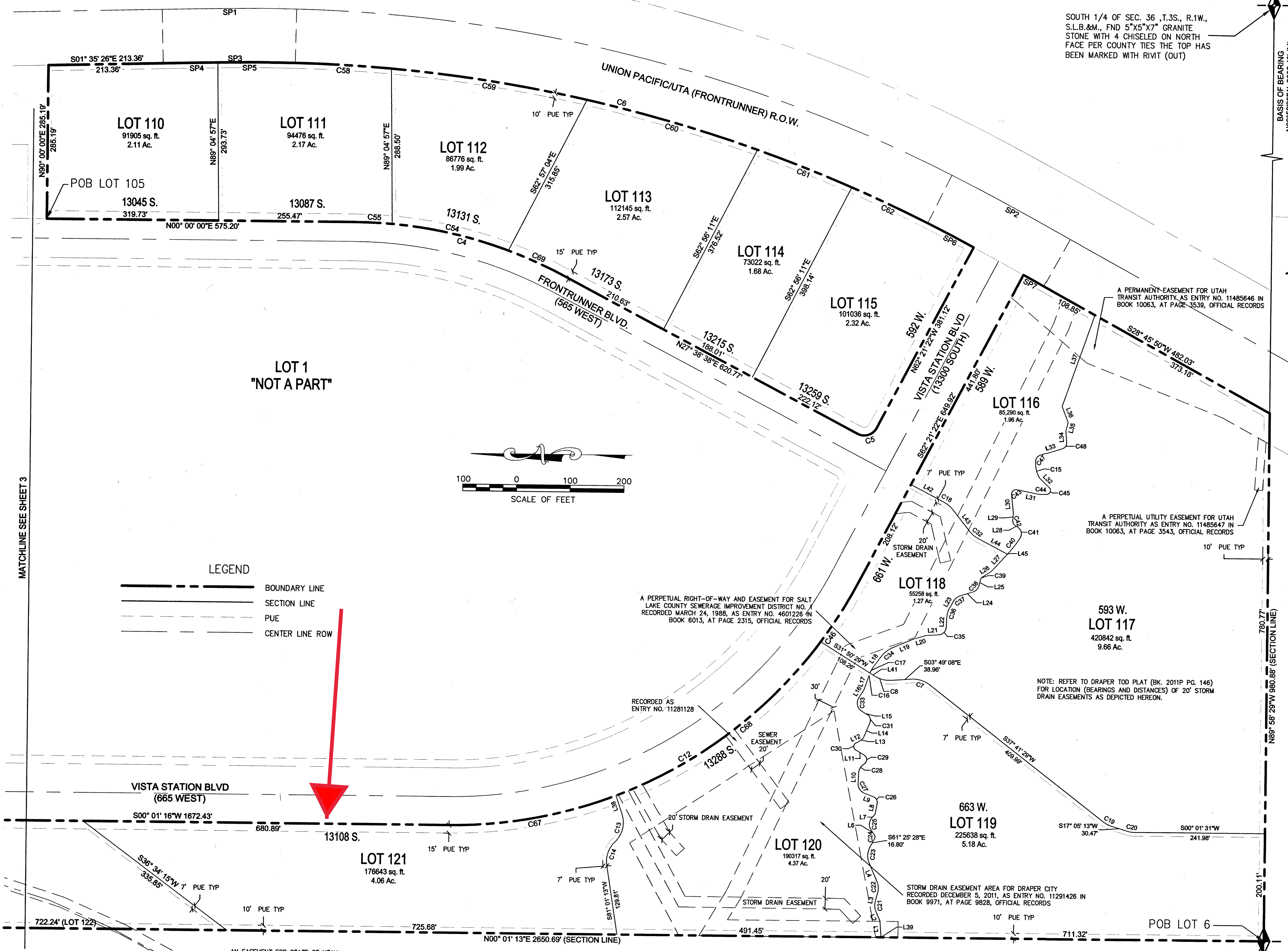


This plat is made solely for the purpose of assisting in locating the property and Cottonwood Title Insurance Agency, Inc. assumes no liability for variation, if any, with actual survey.



SOUTH 1/4 OF SEC. 36, T.3S., R.1W., S.L.B.&M., FND 5"X5"X7" GRANITE STONE WITH 4 CHISELED ON NORTH FACE PER COUNTY TIES THE TOP HAS BEEN MARKED WITH RIVET (OUT)

BASIS OF BEARING
N89°59'29"W 2692.43' (M)

Line Table			Curve Table					
LINE	LENGTH	DIRECTION	CURVE	LENGTH	RADIUS	DELTA	CHORD	DISTANCE
L1	30.27	N85° 32' 28"E	C4	402.87	835.00	27° 38' 38"	N13° 49' 19"E	398.97
L2	19.30	N86° 13' 11"E	C5	40.84	26.00	90° 00' 00"	N17° 21' 22"W	36.77
L3	18.82	S75° 53' 37"E	C6	1223.46	2764.79	25° 21' 16"	S13° 35' 12"W	1213.52
L4	39.92	N86° 23' 47"E	C7	36.22	50.00	41° 30' 37"	S16° 56' 11"W	35.44
L5	10.05	N55° 04' 21"E	C8	31.12	50.00	35° 39' 37"	S14° 00' 40"W	30.62
L6	10.07	S50° 12' 50"E	C12	928.65	853.00	62° 22' 38"	S31° 10' 03"E	683.46
L7	19.97	S79° 42' 07"E	C13	56.47	50.00	64° 42' 23"	N78° 15' 41"W	53.51
L8	20.35	N21° 16' 08"E	C14	48.06	50.00	55° 04' 17"	N71° 26' 38"W	46.23
L9	21.26	S87° 35' 36"E	C15	32.12	55.74	33° 00' 47"	N76° 19' 48"E	31.67
L10	19.22	N31° 04' 57"E	C16	7.49	48.22	8° 54' 12"	S71° 56' 32"E	7.49
L11	4.66	S23° 51' 12"E	C17	11.32	48.22	13° 26' 51"	S60° 46' 01"E	11.29
L12	11.11	S37° 24' 01"E	C18	20.94	50.00	24° 00' 00"	S39° 38' 38"W	20.79
L13	30.39	S67° 33' 08"E	C19	17.98	50.00	20° 36' 16"	S27° 23' 21"W	17.88
L14	15.09	N31° 18' 15"E	C20	14.89	50.00	17° 03' 42"	S08° 33' 22"W	14.83
L15	17.62	S57° 40' 13"E	C21	18.29	28.95	36° 11' 20"	N88° 00' 43"E	17.98
L16	25.80	S71° 09' 32"E	C22	18.62	28.36	37° 36' 51"	N85° 12' 12"E	18.28
L17	24.15	S54° 02' 35"E	C23	29.32	34.47	48° 44' 47"	S85° 47' 51"E	28.45
L18	41.00	S22° 57' 22"E	C24	8.06	7.06	65° 23' 44"	N87° 46' 13"E	7.65
L19	25.17	S16° 43' 54"E	C25	24.49	18.09	77° 35' 49"	S89° 00' 44"E	22.66
L20	25.31	S03° 51' 28"E	C26	15.03	10.87	79° 13' 38"	N90° 52' 56"E	13.66
L21	19.92	S87° 35' 21"E	C27	21.46	18.87	65° 10' 16"	N59° 49' 16"E	20.32
L22	16.81	S60° 31' 40"E	C28	18.23	21.10	49° 29' 51"	S55° 49' 53"E	17.67
L23	23.94	S16° 55' 06"E	C29	19.78	9.62	117° 50' 06"	N90° 00' 00"E	16.48
L24	12.46	S76° 25' 23"E	C30	15.88	7.52	120° 59' 15"	S84° 20' 49"E	13.09
L25	17.41	N32° 14' 03"W	C31	14.72	13.57	62° 06' 53"	N82° 40' 43"E	14.01
L26	44.15	S47° 08' 55"E	C32	20.94	50.00	24° 00' 00"	S39° 38' 38"W	20.79
L27	7.60	N33° 19' 29"E	C33	28.77	17.78	92° 43' 16"	N75° 58' 09"E	25.73
L28	13.37	S85° 14' 23"E	C34	28.66	49.95	33° 06' 12"	S39° 30' 28"E	28.46
L29	35.30	N83° 44' 13"E	C35	19.96	14.33	79° 53' 41"	S47° 38' 31"E	18.40
L30	32.24	S11° 15' 19"W	C36	16.48	37.43	25° 13' 43"	S73° 08' 32"E	16.35
L31	25.23	N44° 18' 44"E	C37	16.83	25.27	38° 09' 28"	S35° 59' 50"E	16.52
L32	44.21	S17° 34' 45"E	C38	15.68	15.92	56° 25' 20"	S48° 12' 43"E	15.06
L33	22.86	N85° 50' 02"E	C39	7.19	12.23	33° 39' 34"	S49° 03' 50"E	7.06
L34	15.72	S74° 23' 27"E	C40	36.59	226.21	9° 15' 59"	S52° 44' 46"E	36.59
L35	32.39	N69° 13' 16"E	C41	22.55	14.47	89° 17' 46"	N77° 58' 22"E	20.33
L36	179.91	S70° 49' 42"E	C42	9.73	10.36	53° 47' 02"	N67° 52' 06"E	9.37
L37	36.22	S71° 23' 07"W	C43	15.59	8.90	100° 22' 19"	S38° 55' 50"E	13.67
L38	0.85	N79° 52' 03"E	C44	23.49	56.24	23° 55' 42"	S03° 36' 13"W	23.32
L39	10.91	N31° 50' 29"E	C45	18.34	7.35	127° 19' 38"	S72° 01' 27"E	13.18
L40	70.32	S27° 38' 38"W	C46	126.19	853.00	8° 40' 41"	S58° 01' 02"E	129.07
L41	50.76	S51° 38' 38"W	C47	15.32	12.61	69° 35' 03"	S52° 22' 17"E	14.39
L42	61.94	S27° 38' 38"W	C48	12.26	10.15	69° 13' 36"	S59° 28' 10"E	11.53
L43	222.35	S15° 15' 26"E	C54	222.35	835.00	15° 15' 26"	N12° 15' 00"E	221.70
L44	67.35	S35° 05' 05"	C55	67.35	835.00	4° 37' 17"	N02° 18' 39"E	67.33
L45	179.22	S764.79	C56	179.22	2764.79	3° 42' 51"	S02° 45' 59"W	179.19
L46	369.18	S764.79	C59	369.18	2764.79	7° 39' 02"	S08° 28' 56"W	368.90
L47	330.27	S764.79	C60	330.27	2764.79	6° 50' 39"	S15° 41' 46"W	330.07
L48	189.07	S764.79	C61	189.07	2764.79	3° 55' 05"	S21° 04' 38"W	189.03
L49	155.74	S764.79	C62	155.74	2764.79	3° 13' 39"	S24° 39' 01"W	155.72
L50	317.36	S764.79	C67	317.36	853.00	21° 19' 02"	S10° 38' 15"E	315.54
L51	482.09	S764.79	C68	482.09	853.00	32° 22' 56"	S37° 29' 13"E	475.70
L52	113.16	S764.79	C69	113.16	853.00	7° 45' 54"	N23° 45' 41"E	113.08

Spiral Table				
SPRAL	LENGTH	RADIUS	A	OFFSET
SP1	250.00	2864.79	846.28	0.0
SP2	250.00	2864.79	846.28	0.0
SP3	245.64	2764.79	—	-100.00
SP4	101.77	2764.79	—	-100.00
SP5	143.87	2764.79	—	-100.00
SP6	96.65	2764.79	—	-100.00
SP7	42.97	2764.79	—	-100.00

STATE OF UTAH
DEPARTMENT OF FORESTRY
APN 2733220010

SOUTHWEST CORNER OF SEC. 36, T.3S., R.1W., S.L.B.&M., FND 3" BRASS CAP

STATE OF UTAH
DEPARTMENT OF FORESTRY
APN 2733220010

DATE: 12-03-2013
 PLAT DATE:
 SCALE: 1" = 100'
 NUMBER: 8DHL010100

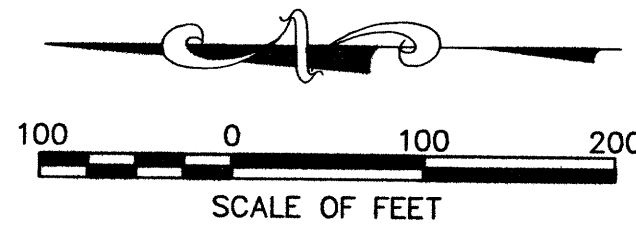
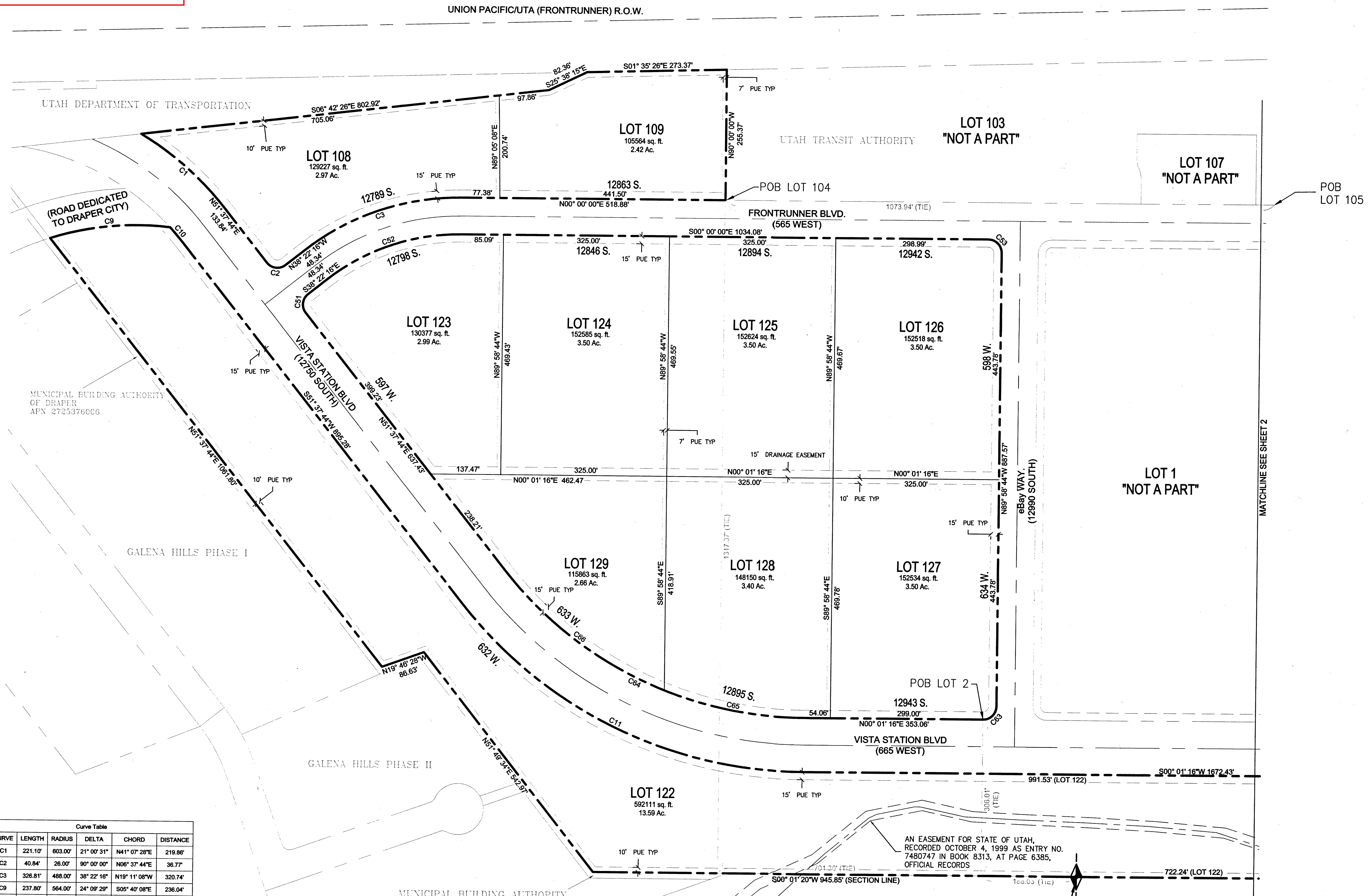
DESIGNED: BDA
 PRINTED: TDM
 CHECKED: BDA

SHEET: 2
 OF: 3

DRAPER TOD SECOND AMENDMENT
 DRAPER, UTAH

P S O M A S
 4179 Riverboat Road, Suite 200
 Salt Lake City, Utah 84123
 (801) 210-5777 (801) 210-5782 (FAX)

This plat is made solely for the purpose of assisting in locating the property and Cottonwood Title Insurance Agency, Inc. assumes no liability for variation, if any, with actual survey.



LEGEND

- BOUNDARY LINE
- SECTION LINE
- - - PUE
- CENTER LINE ROW

CURVE	LENGTH	RADIUS	DELTA	CHORD	DISTANCE
C1	221.10'	603.00'	21° 00' 31"	N41° 07' 28"E	219.86'
C2	40.84'	26.00'	90° 00' 00"	N06° 37' 44"E	36.77'
C3	326.81'	488.00'	38° 22' 16"	N19° 11' 08"W	320.74'
C9	237.80'	564.00'	24° 09' 29"	S05° 40' 08"E	236.04'
C10	36.92'	497.00'	4° 15' 24"	S49° 30' 02"W	36.92'
C11	788.32'	853.00'	51° 38' 28"	S25° 49' 30"W	742.61'
C51	40.84'	26.00'	90° 00' 00"	S83° 22' 16"E	36.77'
C52	278.60'	416.00'	38° 22' 16"	S19° 11' 08"E	273.42'
C53	40.85'	26.00'	90° 01' 16"	S45° 00' 38"W	36.78'
C63	40.84'	26.00'	90° 00' 00"	N44° 58' 44"W	36.77'
C64	672.84'	747.00'	51° 38' 28"	N25° 49' 30"E	650.33'
C65	277.27'	747.00'	21° 16' 00"	N10° 39' 16"E	275.68'
C66	395.57'	747.00'	30° 20' 28"	N36° 27' 30"E	390.97'

AN EASEMENT FOR STATE OF UTAH, RECORDED OCTOBER 4, 1999 AS ENTRY NO. 7480747 IN BOOK 8313, AT PAGE 6385, OFFICIAL RECORDS

WEST 1/4 CORNER OF SEC. 36, T.3S., R.1W., S.L.B.&M., FND 3" BRASS CAP

STATE OF UTAH DEPARTMENT OF FORESTRY APN 2733220010

DATE: 12-03-2013
 PLAT DATE:
 SCALE: 1" = 100'
 NUMBER: 8DHL010100

DRAPER TOD SECOND AMENDMENT
 DRAPER, UTAH

P S O M A S
 4779 Riverboat Road, Suite 200
 Salt Lake City, Utah 84123
 (801) 210-5777 (801) 210-5782 (FAX)

DESIGNED: BDA
 PRINTED: TDM
 CHECKED: BDA

SHEET: 33
 OF: 33