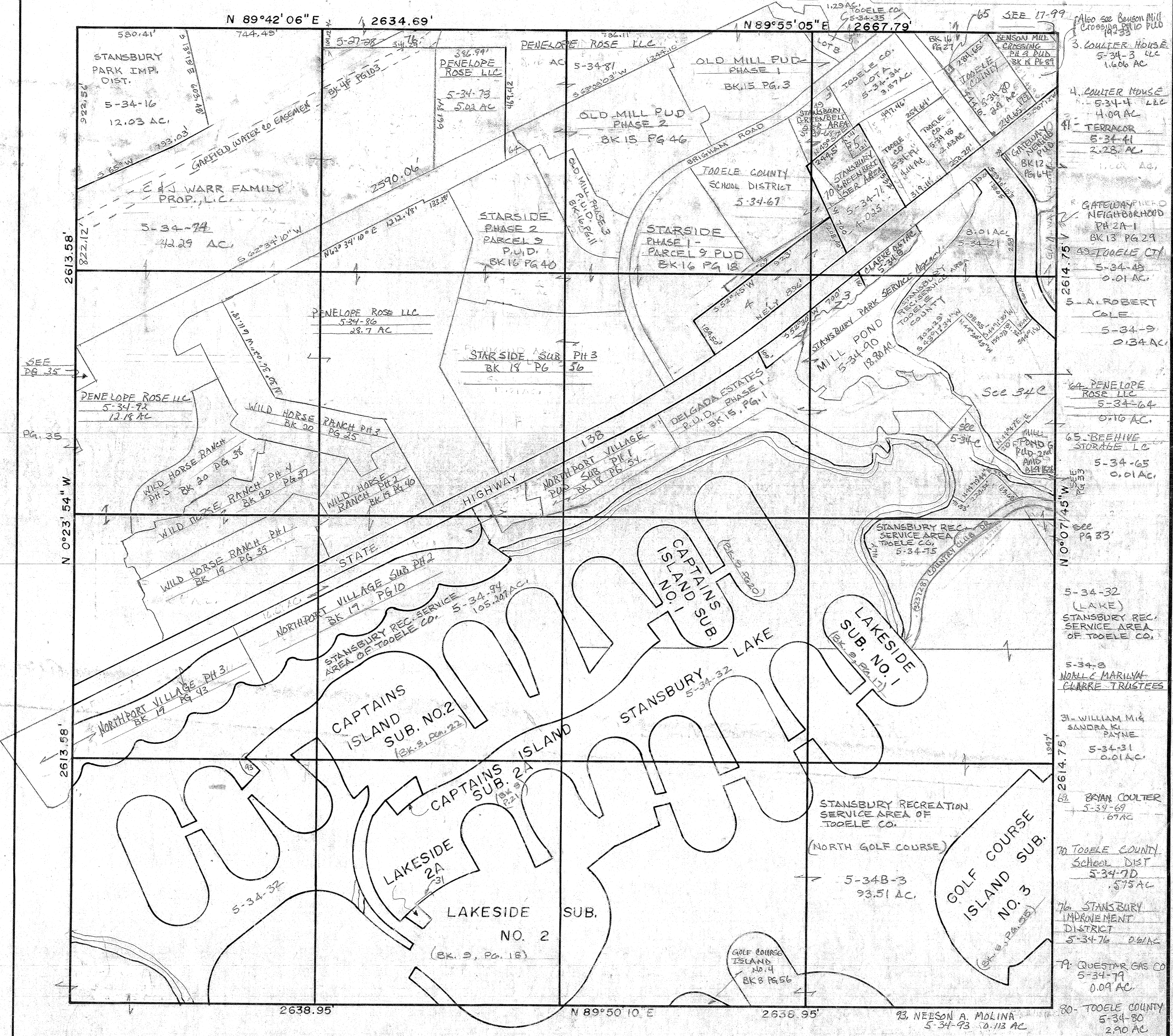


SECTION 16 , T 2 S , R 4 W , S.L.B.&M.

THIS PLAT IS MADE SOLELY FOR THE PURPOSE OF ASSISTING IN LOCATING THE LAND, AND THE RECORDER ASSUMES NO LIABILITY FOR VARIATIONS, IF ANY, WITH AN ACTUAL SURVEY.

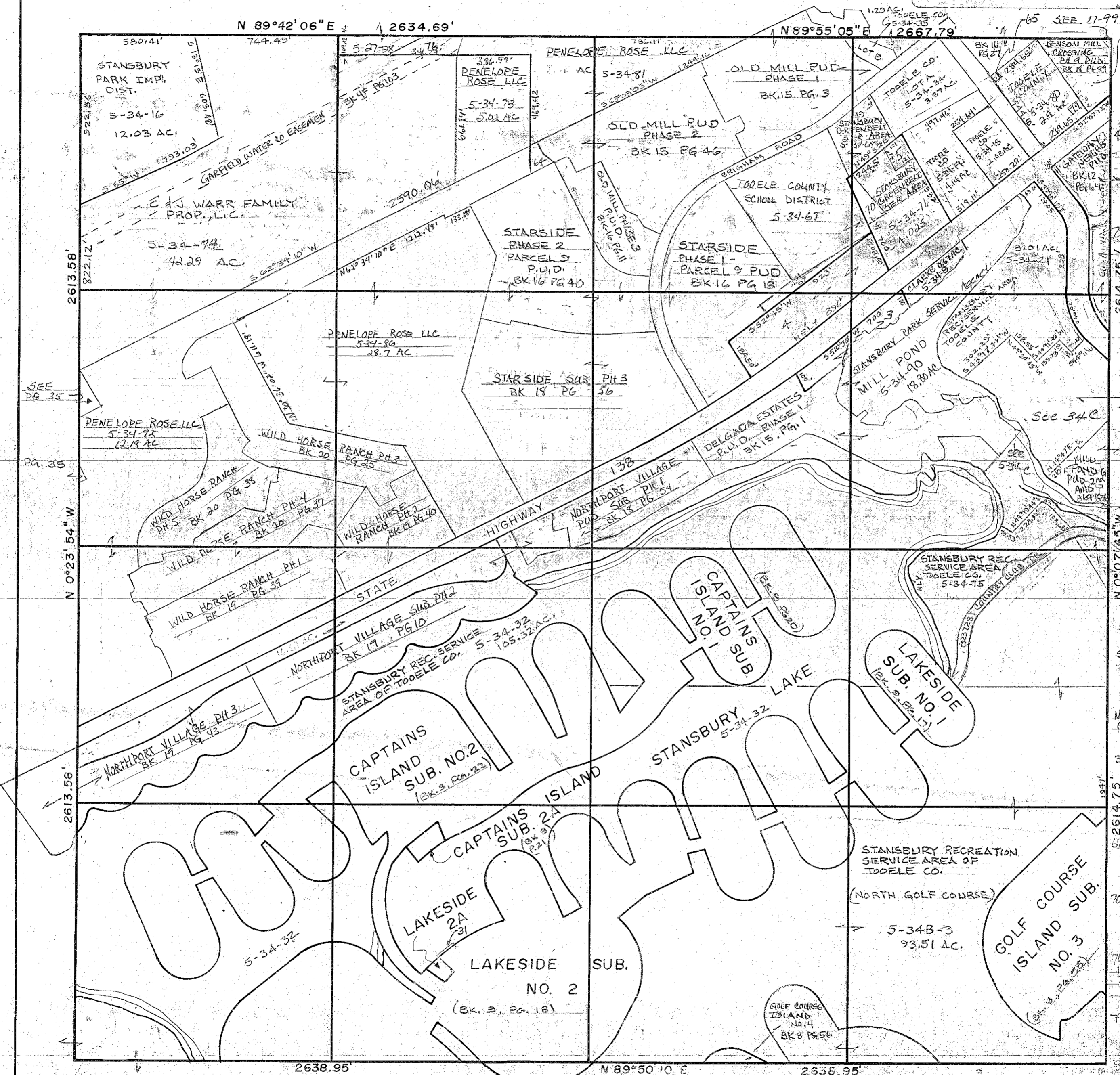


- 3. COULTER HOUSE 5-34-3 LLC 1.606 AC
- 4. COULTER HOUSE 5-34-4 LLC 4.09 AC
- 41. TERRACOR 5-34-41 2.28 AC
- 43. TOOELE CTY 5-34-43 0.01 AC
- 5. AL ROBERT COLE 5-34-9 0.34 AC
- 64. PENNELOPE ROSE LLC 5-34-64 0.16 AC
- 65. BEEHIVE STORAGE LC 5-34-65 0.01 AC
- See PG 35
- 5-34-32 (LAKE) STANSBURY REC. SERVICE AREA OF TOOELE CO.
- 5-34-3 NORRIS MARILYN CLARRE TRUSTEES
- 31. WILLIAM M & SANDRA K. PAYNE 5-34-31 0.01 AC
- 69. BRIAN COULTER 5-34-69 0.67 AC
- 70. TOOELE COUNTY SCHOOL DIST 5-34-70 0.57 AC
- 76. STANSBURY IMPROVEMENT DISTRICT 5-34-76 0.61 AC
- 79. QUESTAR GAS CO 5-34-79 0.09 AC
- 80. TOOELE COUNTY 5-34-80 2.90 AC

REVISIONS				NOTES	U.S.T.C. approval Date:	PLAT DEPARTMENT TOOELE COUNTY, UTAH	Section <u>16 T 2 S R 4 W</u> drawn by: <u>DD</u> date: <u>7/81</u>	book page <u>5 34</u> scale <u>1"=400'</u>
INITIAL	AND DATE							
478517	5-34-93	12/14/18	2-MD					
	5-34-94							

SECTION 16 , T 2 S , R 4 W , S.L.B.&M.

THIS PLAT IS MADE SOLELY FOR THE PURPOSE OF ASSISTING IN LOCATING THE LAND, AND THE RECORDER ASSUMES NO LIABILITY FOR VARIATIONS, IF ANY, WITH AN ACTUAL SURVEY.

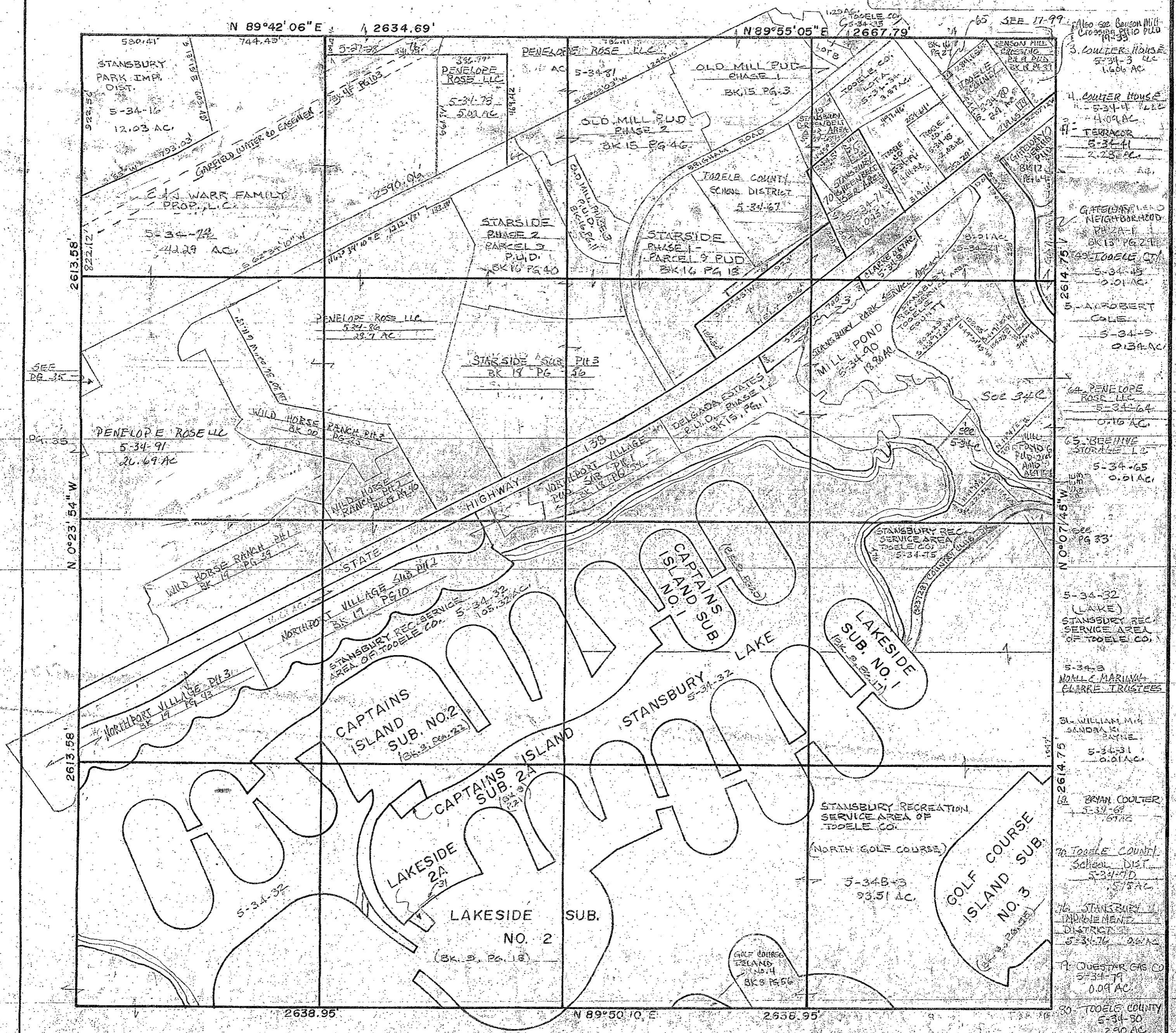


- 1. Also see Benson Mill Crossing Pl. 10 P. 10
- 2. COULTER HOUSE 5-34-3 1.606 AC
- 3. COULTER HOUSE 5-34-4 4.09 AC
- 4. TERRACOR 5-34-11 2.28 AC
- 5. GATEWAY NEIGHBORHOOD PH 2A-1 BK 13 PG 29
- 6. TOOELE CTY 5-34-49 0.01 AC
- 7. A. ROBERT COLE 5-34-9 0.34 AC
- 8. PENELOPE ROSE LLC 5-34-64 0.16 AC
- 9. BEEHIVE STORAGE LC 5-34-65 0.01 AC
- 10. SEE PG 33
- 11. SEE PG 33
- 12. SEE PG 33
- 13. SEE PG 33
- 14. SEE PG 33
- 15. SEE PG 33
- 16. SEE PG 33
- 17. SEE PG 33
- 18. SEE PG 33
- 19. SEE PG 33
- 20. SEE PG 33
- 21. SEE PG 33
- 22. SEE PG 33
- 23. SEE PG 33
- 24. SEE PG 33
- 25. SEE PG 33
- 26. SEE PG 33
- 27. SEE PG 33
- 28. SEE PG 33
- 29. SEE PG 33
- 30. SEE PG 33
- 31. SEE PG 33
- 32. SEE PG 33
- 33. SEE PG 33
- 34. SEE PG 33
- 35. SEE PG 33
- 36. SEE PG 33
- 37. SEE PG 33
- 38. SEE PG 33
- 39. SEE PG 33
- 40. SEE PG 33
- 41. SEE PG 33
- 42. SEE PG 33
- 43. SEE PG 33
- 44. SEE PG 33
- 45. SEE PG 33
- 46. SEE PG 33
- 47. SEE PG 33
- 48. SEE PG 33
- 49. SEE PG 33
- 50. SEE PG 33
- 51. SEE PG 33
- 52. SEE PG 33
- 53. SEE PG 33
- 54. SEE PG 33
- 55. SEE PG 33
- 56. SEE PG 33
- 57. SEE PG 33
- 58. SEE PG 33
- 59. SEE PG 33
- 60. SEE PG 33
- 61. SEE PG 33
- 62. SEE PG 33
- 63. SEE PG 33
- 64. SEE PG 33
- 65. SEE PG 33
- 66. SEE PG 33
- 67. SEE PG 33
- 68. SEE PG 33
- 69. SEE PG 33
- 70. SEE PG 33
- 71. SEE PG 33
- 72. SEE PG 33
- 73. SEE PG 33
- 74. SEE PG 33
- 75. SEE PG 33
- 76. SEE PG 33
- 77. SEE PG 33
- 78. SEE PG 33
- 79. SEE PG 33
- 80. SEE PG 33

REVISIONS	INITIAL	AND DATE	NOTES	U.S.T.C. approval Date:	PLAT DEPARTMENT	Section 16 T 2 S R 4 W	book / page
471287	20-37	Wild Horse Ranch PH 4			TOOELE COUNTY, UTAH		5 34
474288	20-38	Wild Horse Ranch PH 5					
	5-31-92		92				
drawn by: DD date: 7/81							scale 1"=400'

SECTION 16 , T 2 S , R 4 W , S.L.B. & M.

THIS PLAT IS MADE SOLELY FOR THE PURPOSE OF ASSISTING IN LOCATING THE LAND, AND THE RECORDER ASSUMES NO LIABILITY FOR VARIATIONS, IF ANY, WITH AN ACTUAL SURVEY

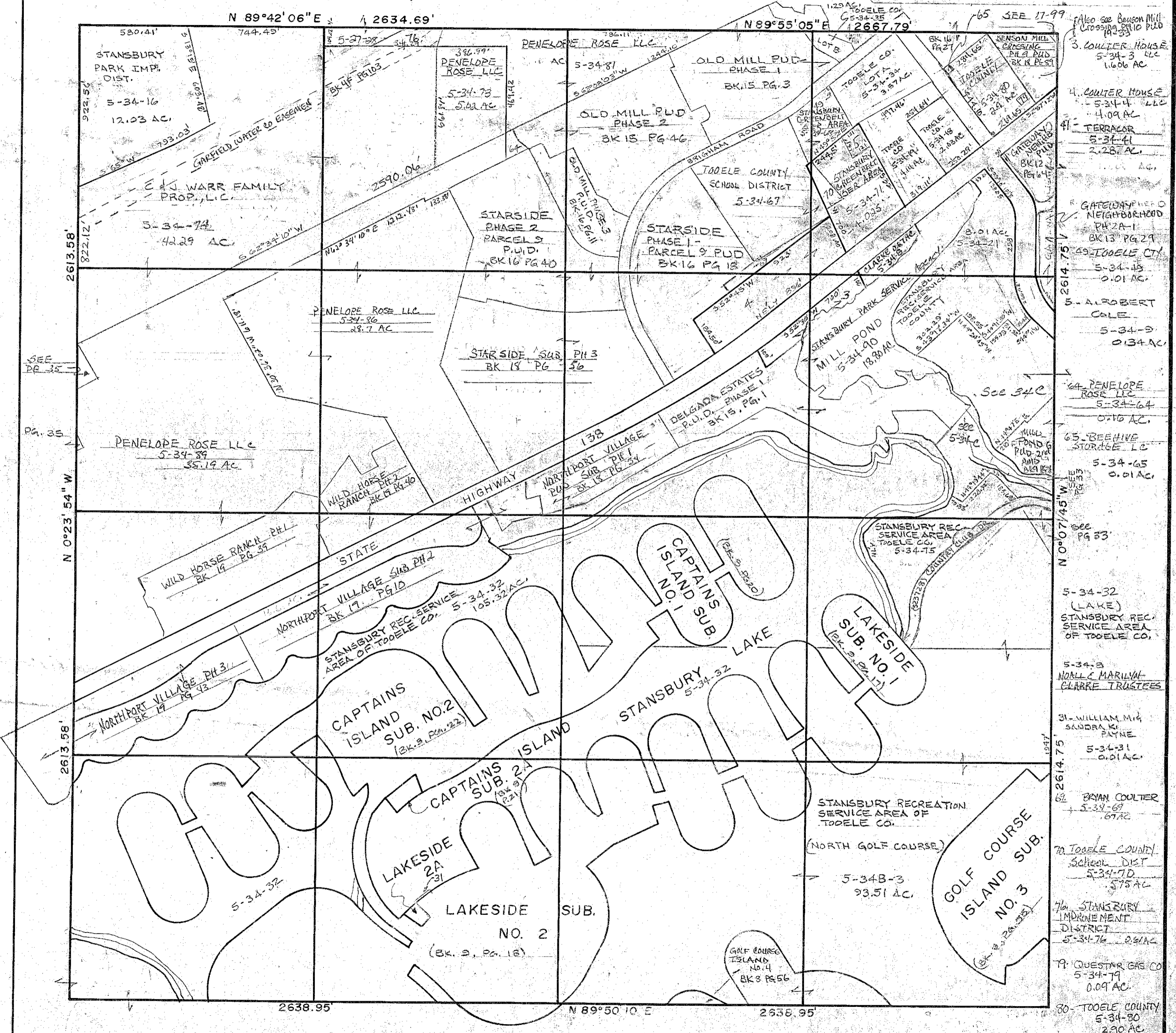


- 3. COULTER HOUSE 5-34-3 LLC 1.606 AC
- 4. COULTER HOUSE 5-34-4 LLC 4.09 AC
- 4-1. TERRACOR 5-34-11 2.23 AC
- GATEWAY LEAD NEIGHBORHOOD PH 2A-1 BK 13 PG 27
- 48. LOUELE CT 5-34-45 0.01 AC
- 5. ALBERT COLE 5-34-8 0.38 AC
- 64. PENELOPE ROSE LLC 5-34-64 0.16 AC
- 65. BEEHIVE STORAGE LLC 5-34-65 0.01 AC
- 5-34-32 (LAKE) STANSBURY REC SERVICE AREA OF TOOELE CO.
- 5-34-3 NOLLE MARIANA CLARRE TRUSTEES
- 51. WILLIAM M & SANDRA K. BAYNE 5-34-31 0.01 AC
- 68. BRIAN COULTER 5-34-67 0.67 AC
- 70. TOOELE COUNTY School DIST 5-34-70 0.58 AC
- 76. STANSBURY IMPROVEMENT DISTRICT 5-34-76 2.6 AC
- 77. QUESTAR GAS CO 5-34-77 0.09 AC
- 80. TOOELE COUNTY 5-34-80 2.90 AC

REVISIONS	INITIAL AND DATE	NOTES	U.S.T.C. approval Date:	PLAT DEPARTMENT	Section 16 T2SR 4W	book, page
470069	Wild Horse Ranch Sub Ph 3	91		TOOELE COUNTY, UTAH	drawn by: DD date: 7/81	5 34
					scale 1"=400'	

SECTION 16 , T 2 S , R 4 W , S.L.B.&M.

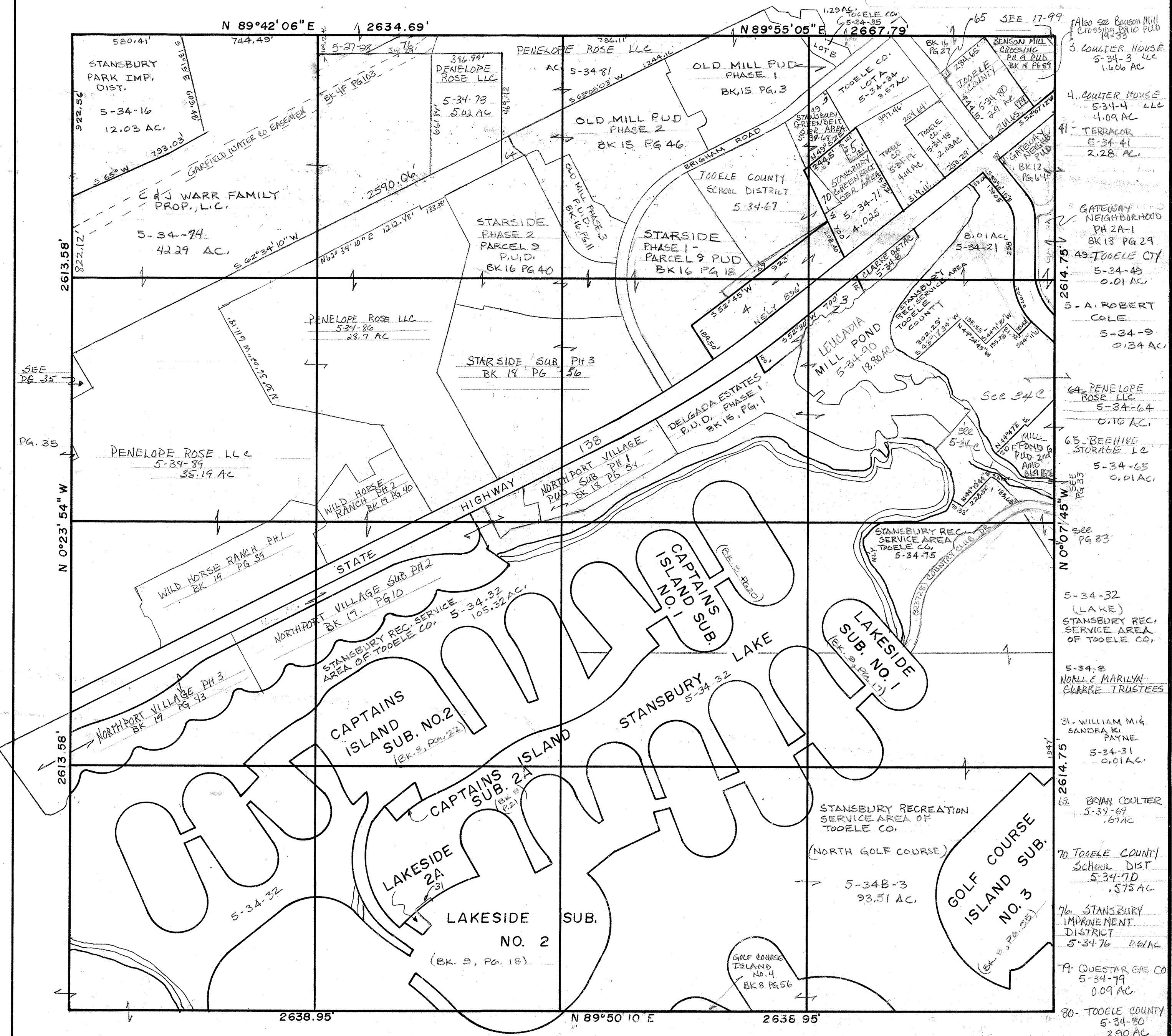
THIS PLAT IS MADE SOLELY FOR THE PURPOSE OF ASSISTING IN LOCATING THE LAND, AND THE RECORDER ASSUMES NO LIABILITY FOR VARIATIONS, IF ANY, WITH AN ACTUAL SURVEY.



REVISIONS	INITIAL	AND DATE	NOTES	U.S.T.C. approval Date:	PLAT DEPARTMENT	Section 16 T2S R4 W	book page
	4/6/94	5-34-90	11/13/18		TOOELE COUNTY, UTAH		5 34
						drawn by: DD	scale 1"= 400'
						date: 7/81	

SECTION 16 , T 2 S , R 4 W , S.L.B.&M.

THIS PLAT IS MADE SOLELY FOR THE PURPOSE OF ASSISTING IN LOCATING THE LAND, AND THE RECORDER ASSUMES NO LIABILITY FOR VARIATIONS, IF ANY, WITH AN ACTUAL SURVEY.



- 3. COULTER HOUSE 5-34-3 LLC 1.606 AC
- 4. COULTER HOUSE 5-34-4 LLC 4.09 AC
- 41. TERRACOR 5-34-41 2.28 AC
- GATEWAY NEIGHBORHOOD PH 2A-1 BK 13 PG 29
- 49. TOOELE CTY 5-34-49 0.01 AC
- 5. A. ROBERT COLE 5-34-9 0.134 AC
- 64. PENELOPE ROSE LLC 5-34-64 0.16 AC
- 65. BEEHIVE STORAGE LC 5-34-65 0.01 AC
- 5-34-32 (LAKE) STANSBURY REC. SERVICE AREA OF TOOELE CO.
- 5-34-8 NORLL & MARILYN CHARRE TRUSTEES
- 31. WILLIAM M & SANDRA K PAYNE 5-34-31 0.01 AC
- 67. BRIAN COULTER 5-34-67 .67 AC
- 70. TOOELE COUNTY SCHOOL DIST 5-34-70 .575 AC
- 76. STANSBURY IMPROVEMENT DISTRICT 5-34-76 0.61 AC
- 79. QUESTAR GAS CO 5-34-79 0.09 AC
- 80. TOOELE COUNTY 5-34-80 2.90 AC

REVISIONS	INITIAL	AND DATE	NOTES	U.S.T.C. approval Date:	PLAT DEPARTMENT	Section	book	page
MILL POND (LAND ONLY)	5-34-90	NOP 3/29/17	90		TOOELE COUNTY, UTAH	16 T 2 S R 4 W	5	34
						drawn by: DD		scale 1"= 400'
						date: 7/81		