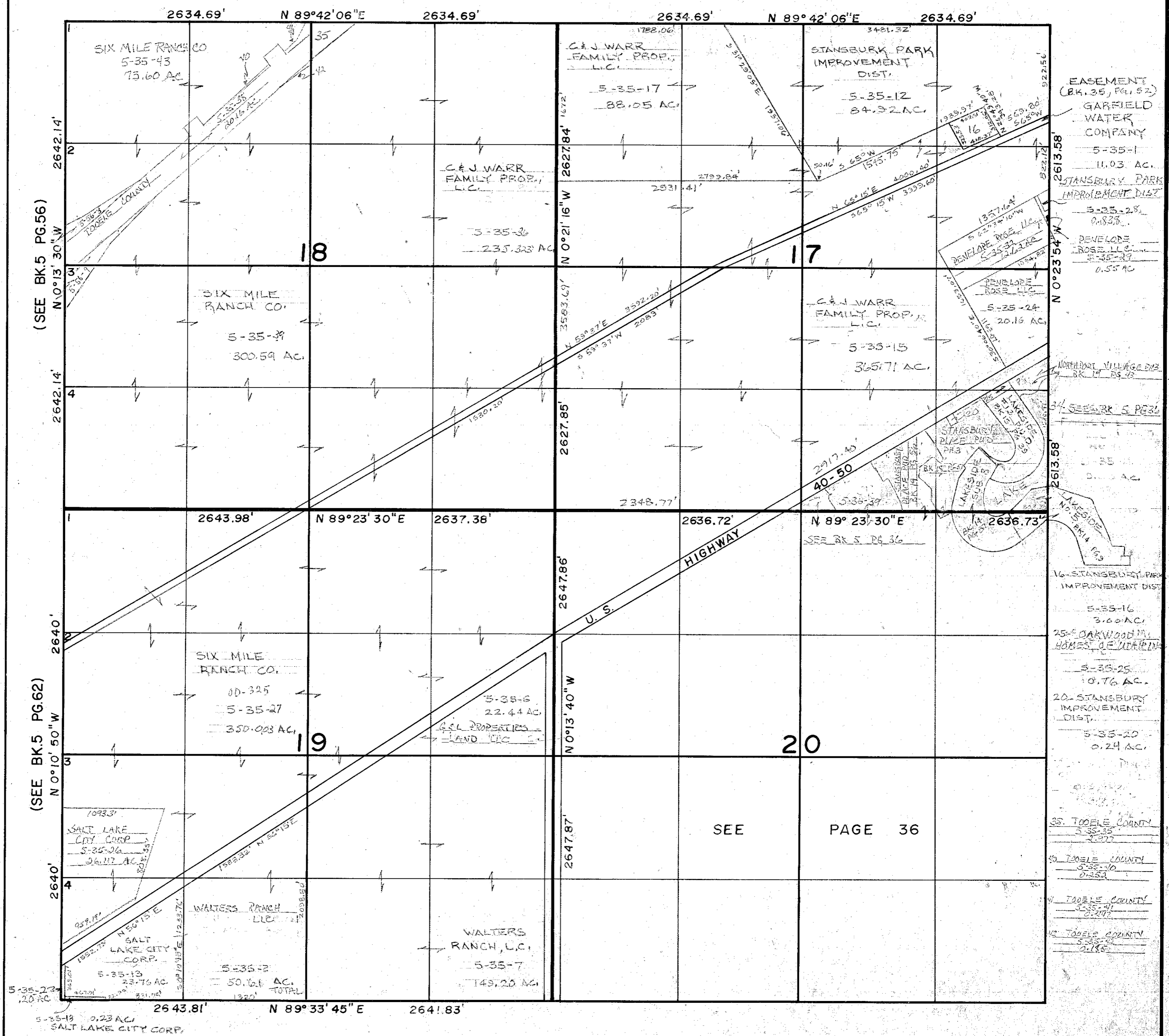


SECTION 18 17  
 SECTION 19 T 2 S, R 4 W, S.L.B. & M.

THIS PLAT IS MADE SOLELY FOR THE PURPOSE OF ASSISTING IN LOCATING THE LAND, AND THE RECORDER ASSUMES NO LIABILITY FOR VARIATIONS, IF ANY, WITH AN ACTUAL SURVEY.



(SEE BK.5 PG.56)

(SEE BK.5 PG.62)

- EASEMENT (BK. 35, PG. 52)
- GARFIELD WATER COMPANY
- 5-35-1
- 11.93 AC.
- STANSBURY PARK IMPROVEMENT DIST.
- 5-35-28
- 0.838
- PENELOPE ROSE, LLC
- 5-35-37
- 0.55 AC.
- NORTHPORT VILLAGE DIST. BK. 14 PG. 42
- 34 SEE BK 5 PG 36
- 35
- 0.1 AC.
- 16-STANSBURY PARK IMPROVEMENT DIST.
- 5-35-16
- 3.60 AC.
- 25-OAKWOOD HILLS HOMES OF UTAH INC.
- 5-35-25
- 10.76 AC.
- 20-STANSBURY IMPROVEMENT DIST.
- 5-35-20
- 0.24 AC.
- 35. TOOELE COUNTY
- 5-35-35
- 3.277
- 39 TOOELE COUNTY
- 5-35-10
- 0.253
- 41 TOOELE COUNTY
- 5-35-41
- 0.247
- 42 TOOELE COUNTY
- 5-35-22
- 0.185

SEE PAGE 36

REVISIONS	INITIAL	AND DATE
1-7-79	5-35-6	D/L/K
2		
3		
4		

NOTES  
 13

U.S.T.C. approval Date:

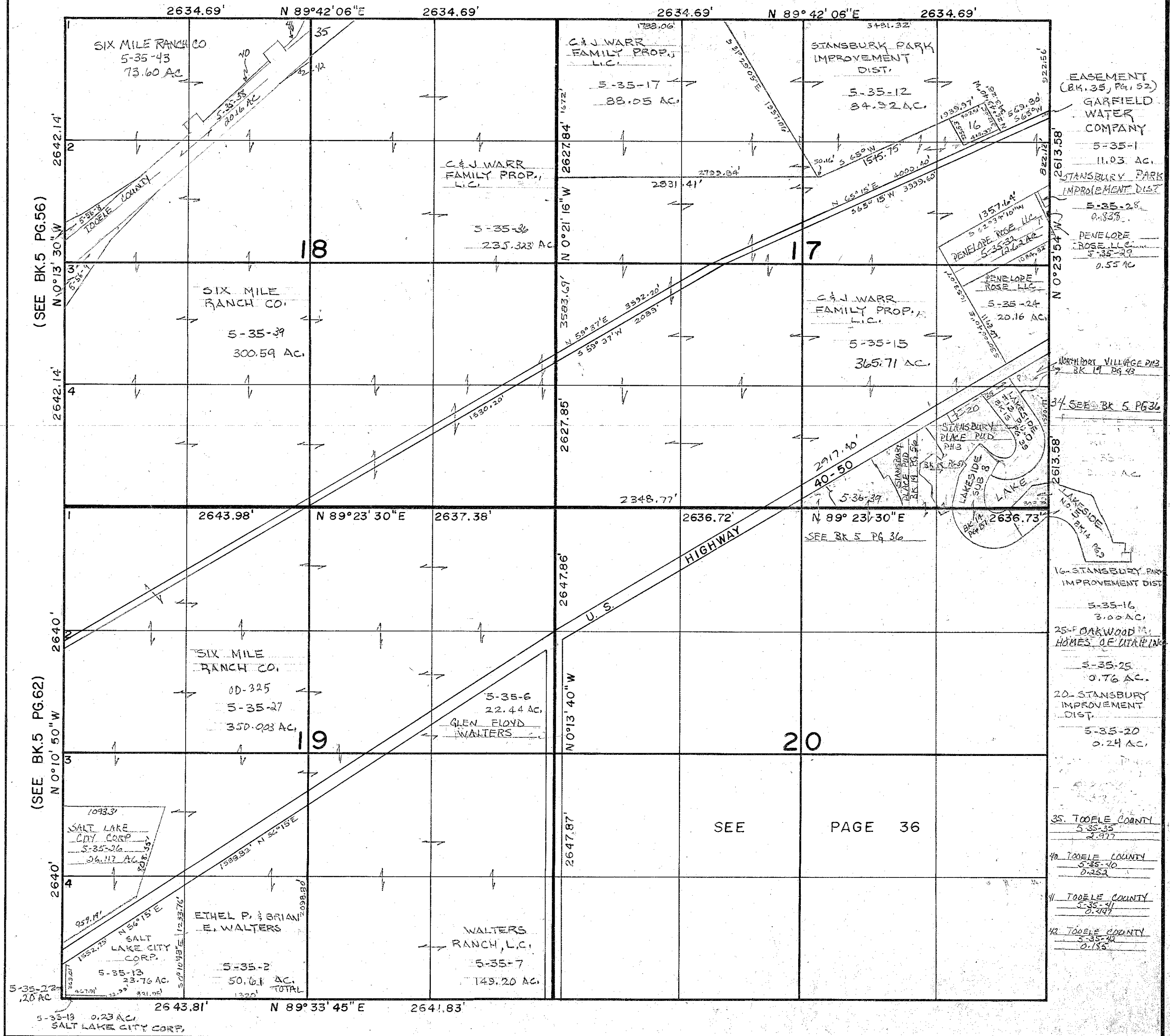
PLAT DEPARTMENT  
 TOOELE COUNTY, UTAH

1817  
 Section 19 T2SR 4W  
 book page 5 35  
 drawn by: DD date: 7/81 scale 1"=800'



SECTION 18 17  
 SECTION 19 T 2 S, R 4 W, S.L.B.&M.

THIS PLAT IS MADE SOLELY FOR THE PURPOSE OF ASSISTING IN LOCATING THE LAND, AND THE RECORDER ASSUMES NO LIABILITY FOR VARIATIONS, IF ANY, WITH AN ACTUAL SURVEY.



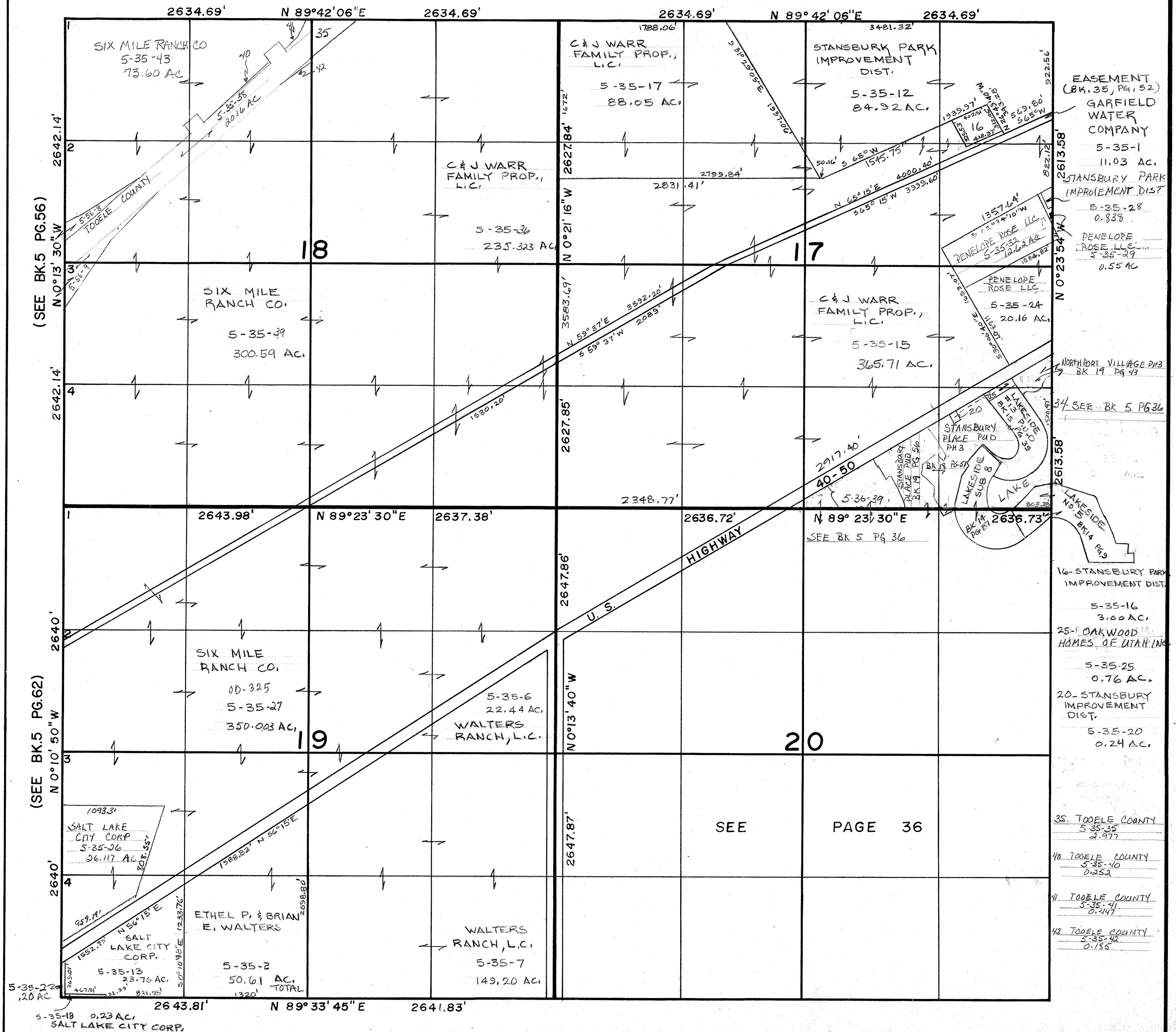
(SEE BK.5 PG.56)

(SEE BK.5 PG.62)

REVISIONS	INITIAL	AND DATE	NOTES	U.S.T.C. approval Date:	PLAT DEPARTMENT	Section	book page
1/6/1999	5-35-6	4/5/19	13		TOOELE COUNTY, UTAH	1817 T2SR 4W	5 35
						drawn by: DD	scale 1"=800'
						date: 7/81	

SECTION 18 17  
 SECTION 19 T 2 S, R 4 W, S.L.B.&M.

THIS PLAT IS MADE SOLELY FOR THE PURPOSE OF ASSISTING IN LOCATING THE LAND, AND THE RECORDER ASSUMES NO LIABILITY FOR VARIATIONS, IF ANY, WITH AN ACTUAL SURVEY.



(SEE BK.5 PG.56)

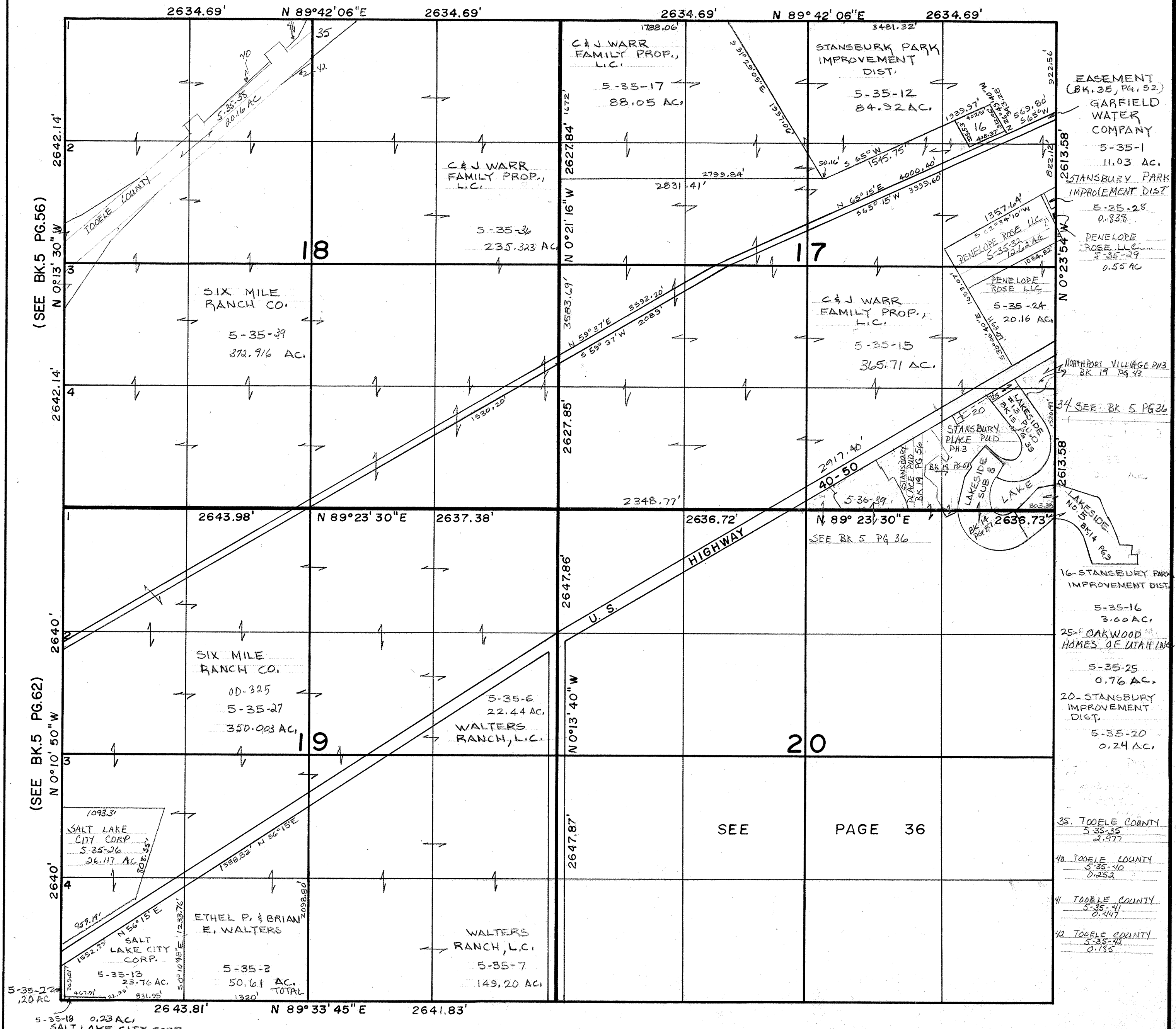
(SEE BK.5 PG.62)

- EASEMENT (BK. 35, Pg. 52)
- GARFIELD WATER COMPANY
- 5-35-1 11.03 AC.
- STANSBURY PARK IMPROVEMENT DIST.
- 5-35-28 0.838
- PENELOPE ROSE, LLC
- 5-35-29 0.55 AC.
- NORTHPORT VILLAGE PH3 BK 19 PG 43
- SEE BK 5 PG 36
- 16- STANSBURY PARK IMPROVEMENT DIST.
- 5-35-16 3.00 AC.
- 25- OAKWOOD HOMES OF UTAH, INC.
- 5-35-25 0.76 AC.
- 20- STANSBURY IMPROVEMENT DIST.
- 5-35-20 0.24 AC.
- 35. TOOELE COUNTY
- 5-35-35 2.977
- 40 TOOELE COUNTY
- 5-35-40 0.252
- 41 TOOELE COUNTY
- 5-35-41 0.447
- 42 TOOELE COUNTY
- 5-35-42 0.185

REVISIONS	INITIAL	AND DATE	NOTES	U.S. T. C. approval Date:	PLAT DEPARTMENT	1817 Section 19 T2SR 4W	book page 5 35
4/1/39/2	5-35-38	5-35-43			TOOELE COUNTY, UTAH	drawn by: DD	scale 1"= 800'
4/1/39/1	5-35-39					date: 7/81	
	5-35-40						
	5-35-41						
	5-35-42						

SECTION 18 17  
 SECTION 19 T 2 S, R 4 W, S.L.B.&M.

THIS PLAT IS MADE SOLELY FOR THE PURPOSE OF ASSISTING IN LOCATING THE LAND, AND THE RECORDER ASSUMES NO LIABILITY FOR VARIATIONS, IF ANY, WITH AN ACTUAL SURVEY.



(SEE BK.5 PG.56)

(SEE BK.5 PG.62)

- EASEMENT (BK. 35, Pg. 52)
- GARFIELD WATER COMPANY
- 5-35-1 11.03 AC.
- STANSBURY PARK IMPROVEMENT DIST
- 5-25-28 0.838
- PENLOPE ROSE LLC
- 5-35-29 0.55 AC
- NORTHPORT VILLAGE PH3 BK 19 PG 43
- SEE BK 5 PG 36
- 16- STANSBURY PARK IMPROVEMENT DIST
- 5-35-16 3.00 AC.
- 25- OAKWOOD HOMES OF UTAH INC
- 5-35-25 0.76 AC.
- 20- STANSBURY IMPROVEMENT DIST.
- 5-35-20 0.24 AC.
- 35. TOOELE COUNTY
- 5-35-35 2.977
- 40. TOOELE COUNTY
- 5-35-40 0.252
- 41. TOOELE COUNTY
- 5-35-41 0.447
- 42. TOOELE COUNTY
- 5-35-42 0.185

REVISIONS	INITIAL	AND DATE
441390	5-35-38	
441391	5-35-39	
441392	5-35-40	
441393	5-35-41	
441394	5-35-42	

NOTES  
 42

U.S.T.C. approval Date:

PLAT DEPARTMENT  
 TOOELE COUNTY, UTAH

1817  
 Section 19 T2SR 4W  
 book page 5 35  
 drawn by: DD date: 7/81 scale 1"=800'