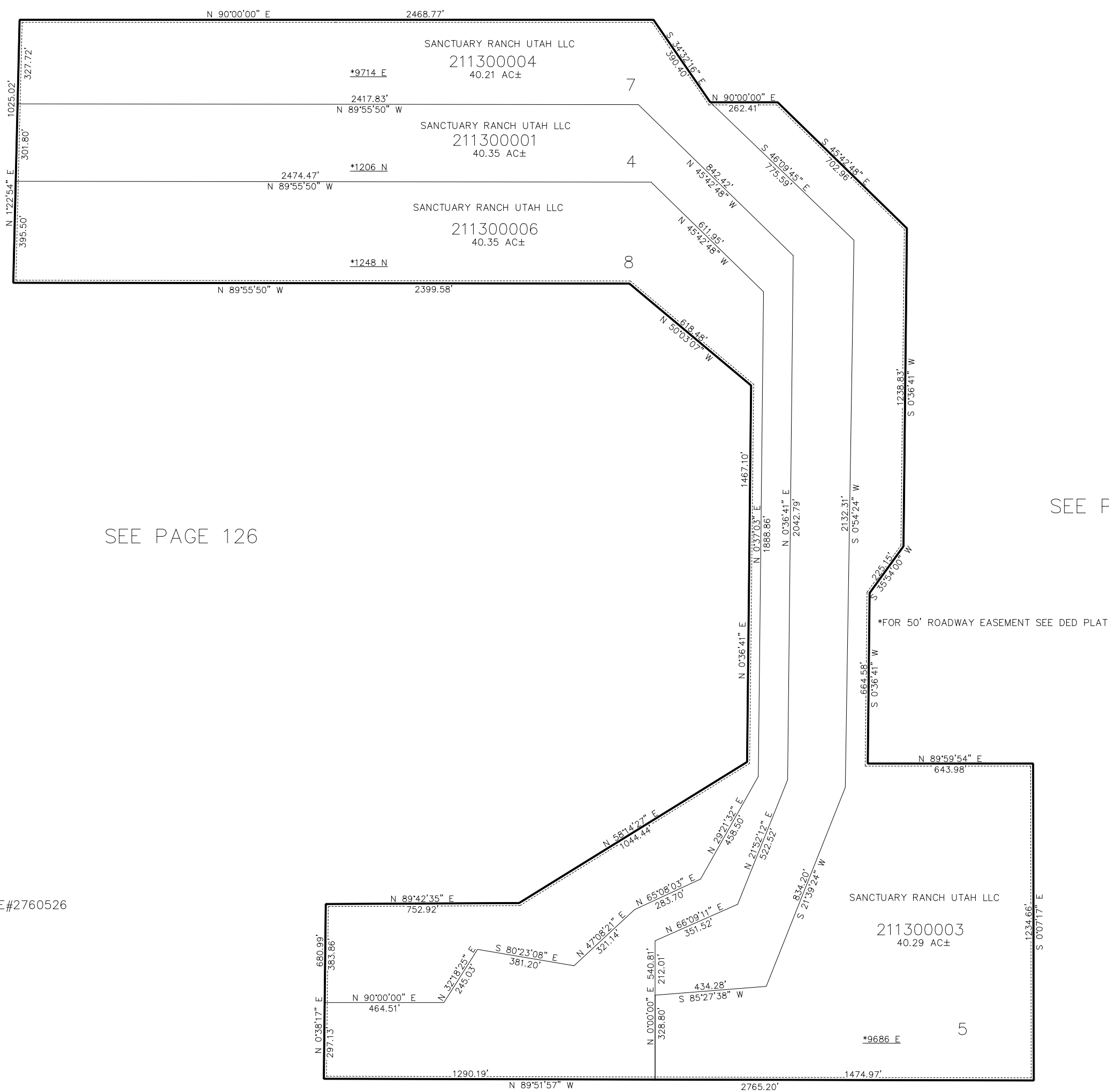


PART OF SECTIONS 3 & 4, T.6N., R.2E., S.L.B. & M.
THE SANCTUARY FIRST AMENDMENT

IN WEBER COUNTY
SCALE 1" = 400'

TAXING UNIT: 231

SEE PAGE 1



SEE PAGE 126

SEE PAGE 126

* SEE ADDRESS AFFIDAVIT E#2760526

10' UTILITY & DRAINAGE EASEMENTS EACH
SIDE OF PROPERTY LINES AS INDICATED
BY DASHED LINES EXCEPT AS OTHERWISE
SHOWN.

SEE PAGE 1

*SEE ADDRESS AFFIDAVIT
E#2867758

FOR COMPLETE ENG DATA SEE
ORIGINAL DEDICATION PLAT IN
BOOK 75, PAGE 71 & 72 OF RECORDS.