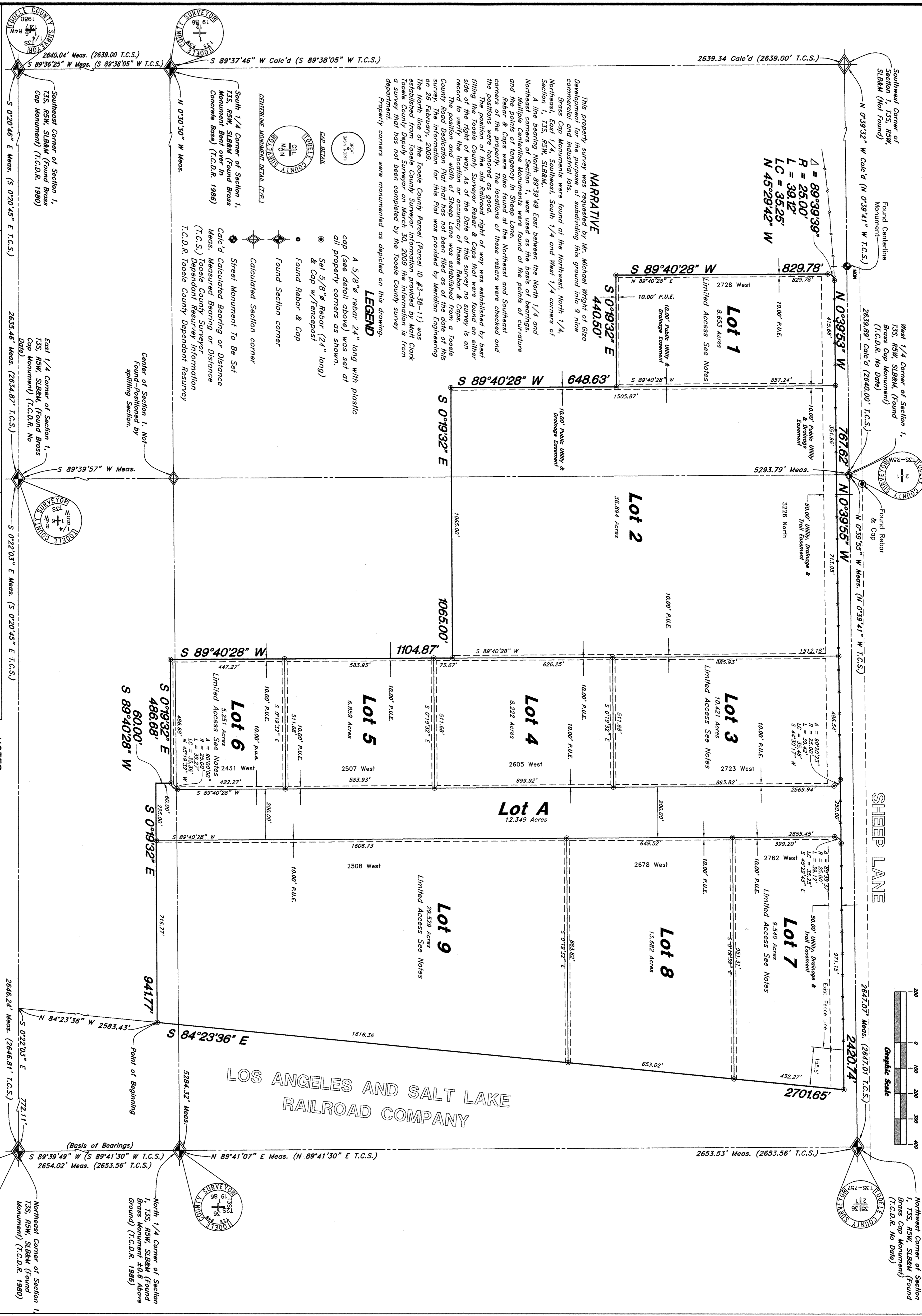


MILLER MOTORSPORTS BUSINESS PARK PUD No. 1

A part of Section 1 Township 3 South, Range 5 West, Salt Lake Base and Meridian, Tooele County, Utah

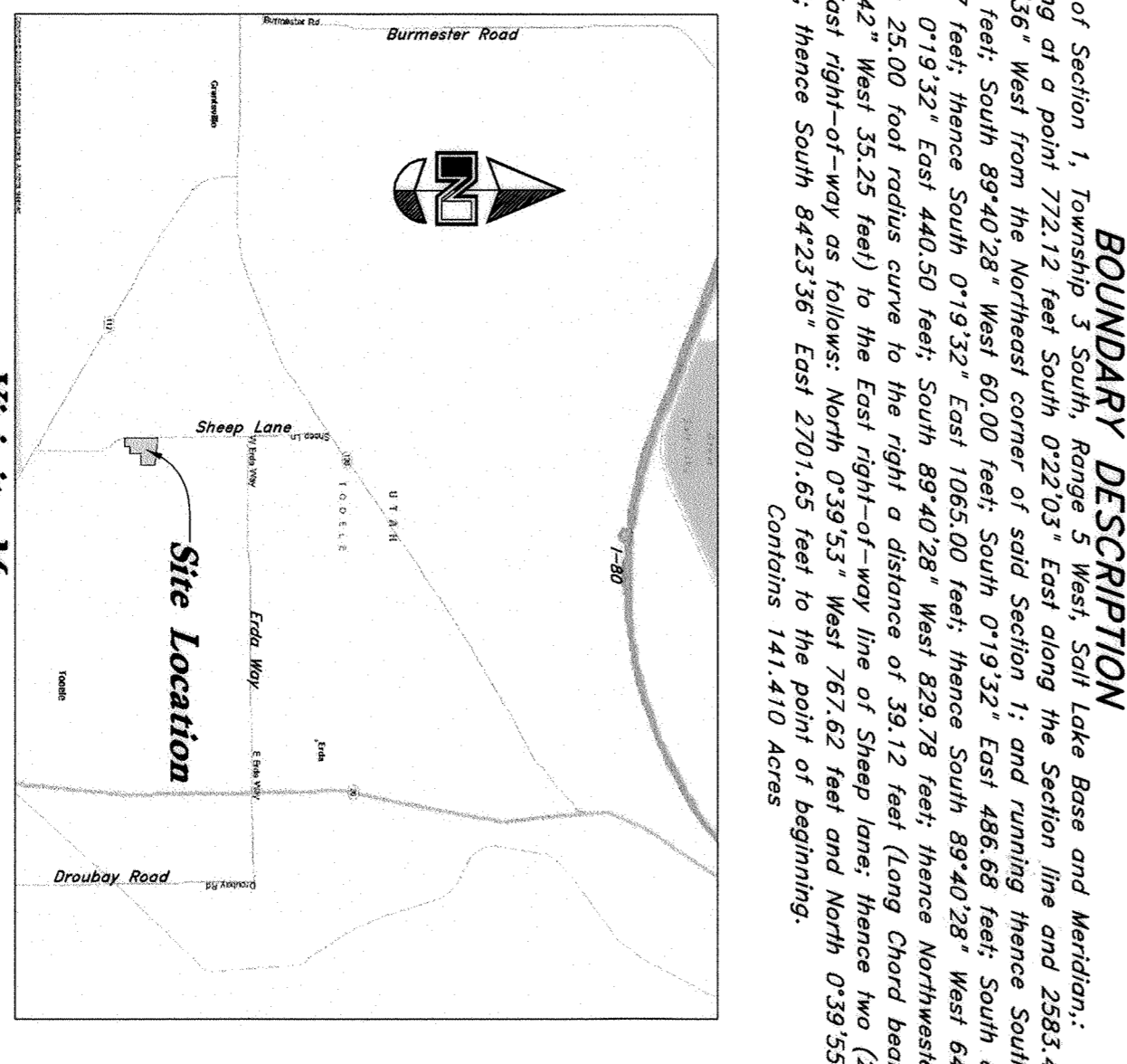


SURVEYOR'S CERTIFICATE
 I, Andy Hubbard, do hereby certify that I am a Professional Land Surveyor in the State of Utah, and that I hold Certification No. 6242920 in accordance with Title 58, Chapter 22, of the Utah Code, and that I am duly sworn and qualified in accordance with the provisions of the Utah Professional Engineers and Land Surveyors Licensing Act. I also certify that this plat of Miller Motorsports Business Park PUD No. 1 in Tooele County, Utah has been correctly drawn to the designated scale and is a true and correct representation of the following description of lands included in said subdivision, based on data compiled from records in the Tooele County Recorder's Office, and of a survey made on the ground in accordance with Section 17-23-17. Measurements have been set as depicted on this drawing.
 Signed this 31st day of March, 2009.
 Andy Hubbard
 Professional Land Surveyor

OWNER'S DEDICATION
 Know all men by these presents that the undersigned, the owners of the herein described tract of land have herewith dedicated to Tooele County, Utah, and shall together with assessments on set forth hereafter to be known as Miller Motorsports Business Park PUD No. 1, the undersigned owners hereby dedicate to Tooele County, Utah, certain strips of easements for utility drainage and recreational trail purposes as shown hereon, the same to be used for the installation, maintenance, and operation of utility lines, drainage, and recreational trails as may be authorized by Tooele County.
 The undersigned owners also hereby convey to any and all public and private utility companies a perpetual, non-exclusive easement over the public utility easements shown on this plat, the same to be used for drainage and the installation, maintenance and operation of utility service lines and facilities.
 Miller Motorsports Estate, LLC
 Gregory S. Miller - Operating Manager
 Tooele County Commission
 Marilyn K. Gilliffe - Tooele County Clerk

ACKNOWLEDGMENTS
 State of Utah
 County of Utah
 City of Salt Lake
 On the 31st day of March, 2009, personally appeared before me Gregory S. Miller, who being by me duly sworn did say that he is Operating Manager of the Miller Motorsports Estate, LLC and that said instrument was signed in behalf of said LLC by a resolution of its Members and Gregory S. Miller acknowledged to me that said LLC executed the same.
 Residing At: Tooele County, Utah
 Gregory S. Miller
 Commission Expires: 09-15-2010
 TABLE A - SIGNER
 Print Name
 State of Utah
 County of Tooele
 On the 1st day of April, 2009, personally appeared before me Marilyn K. Gilliffe, who being by me duly sworn, acknowledged to me that they executed the same, with full authority to do so, all the foregoing and to the same, with full authority to do so, all the foregoing and to the same.
 Residing At: Tooele County, Utah
 Marilyn K. Gilliffe
 Commission Expires: 01-16-2011
 Michelle L. Pridemore
 Print Name
 State of Utah
 County of Tooele
 On the 1st day of April, 2009, personally appeared before me Gregory S. Miller, who being by me duly sworn, acknowledged to me that they executed the same, with full authority to do so, all the foregoing and to the same.
 Residing At: Tooele County, Utah
 Gregory S. Miller
 Commission Expires: 09-15-2010

BOUNDARY DESCRIPTION
 A part of Section 1, Township 3 South, Range 5 West, Salt Lake Base and Meridian, Beginning at a point 772.12 feet South 0°22'03" East along the Section line and 2583.43 feet North 84°23'36" West from the Northeast corner of said Section 1; and running thence South 0°19'32" East 941.77 feet; South 89°40'28" West 60.00 feet; East 486.68 feet; South 89°40'28" West 1104.87 feet; thence South 0°19'32" East 440.50 feet; thence Northwesterly along the arc of a 25.00 foot radius curve to the right a distance of 33.12 feet (Long Chord bears North 45°29'42" West 35.25 feet) to the East right-of-way line of Sheep Lane; thence two (2) courses along said East right-of-way as follows: North 0°39'55" West 767.62 feet and North 0°39'55" West 2420.74 feet; thence South 84°23'36" East 2701.65 feet to the point of beginning. Contains 141,410 Acres.



Vicinity Map
 Not to Scale
Final Plat for Miller Motorsports Business Park PUD No. 1
 A part of Section 1, Township 3 South, Range 5 West, Salt Lake Base and Meridian, Tooele County, Utah



GREAT BASIN ENGINEERING NORTH
 5746 Southpark Lane, Suite 200
 P.O. Box 150046, Ogden, Utah 84415
 (801)244-4111 Fax (801)244-4222 Fax (801)244-7944

DESERT PEAK SPECIAL SERVICE DISTRICT
 Approved this 31st day of March, 2009.
 Director, Special Service District

TOOELE COUNTY ENGINEER
 Approved this 1st day of April, 2009.
 Director, Tooele County Engineer Dept.

DESERT PEAK COMMERCIAL PROJECT AREA
 Approved this 31st day of March, 2009.
 Director, Special Service District

TOOELE COUNTY ATTORNEY
 Approved this 31st day of March, 2009.
 Tooele County Attorney

TOOELE COUNTY PLANNING COMMISSION
 Approved this 31st day of March, 2009.
 Tooele County Planning Commission

TOOELE COUNTY SURVEYOR
 I hereby certify that this office has examined this plat and it is correct in accordance with the information.
 Signed this 31st day of March, 2009.
 Tooele County Surveyor

NORTH TOOELE COUNTY FIRE DEPARTMENT
 Approved this 31st day of March, 2009.
 Chief, North Tooele County Fire Department

TOOELE COUNTY TREASURER
 Approved this 31st day of March, 2009.
 Tooele County Treasurer

TOOELE COUNTY BOARD OF HEALTH
 Approved this 31st day of March, 2009.
 Director, Tooele County Board of Health