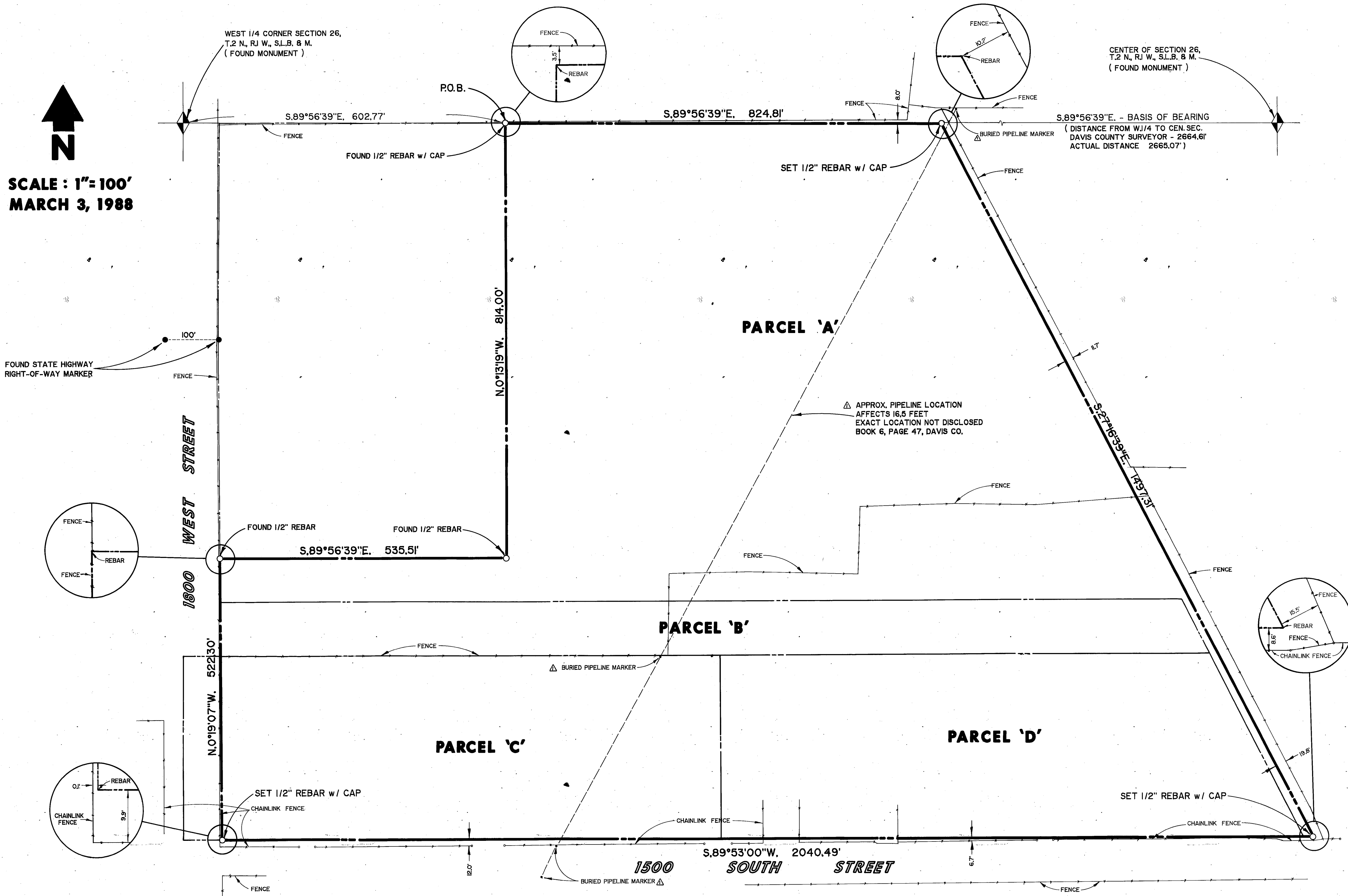


MAVERIK COUNTRY STORES PARCEL

1500 SOUTH ST. & 1800 WEST ST., WOODS CROSS

A PART OF THE S.W. 1/4 OF SECTION 26, T.2N., R.1W., S.L.B.&M.

SCALE: 1" = 100'
MARCH 3, 1988



PARCEL 'A'

Beginning at a point N.89°53'E. 70 feet from the N.W. corner of the S.W. 1/4 of Section 26, T.2N., R.1W., S.L.B.&M., and running thence along the North line of said S.W. 1/4 N.89°53'E. 1357.58 feet; thence S.27°27'E. 22.85 chains to a certain four-rod street running East and West; thence along the North line of said street West .27 chains; thence N.27°27'W. 5.81 chains and 113 feet, more or less, to the North line of property described in a certain Uniform Real Estate Contract between the parties hereto, dated April 27, 1977; thence along said North line West 1805 feet, more or less, to the West line of Seller's land; thence along said West line N.0°15'W. 491.6 feet and N.0°21'E. 403 feet to the point of beginning.

PARCEL 'B'

Excepting therefrom: Beginning at a point on the North line of the said S.W. 1/4 lying on the East right-of-way line of 1800 West Street, said point being S.89°56'39"E. 70.12 feet from the N.W. corner of the said S.W. 1/4 (W. 1/4 corner a found brass cap), of Section 26, T.2N., R.1W., S.L.B.&M.; thence continuing S.89°56'39"E. along the North line of the said S.W. 1/4, 522.65 feet; thence S.0°13'19"E. 814.00 feet; thence N.89°56'39"W. 535.51 feet to a point on the East right-of-way line of 1800 West Street; thence N.0°19'07"W. along said right-of-way line, 409.50 feet to a right-of-way marker; thence N.0°16'55"E. along said right-of-way line 404.50 feet to the point of beginning. Said tract containing 10.00 acres.

PARCEL 'C'

Beginning at a point which is N.89°53'E. 70 feet and S.0°21'W. 403 feet and S.0°15'E. 491 feet from the N.W. corner of the S.W. 1/4 of Section 26, T.2N., R.1W., S.L.B.&M.; thence East 1805 feet, more or less; thence S.27°27'E. 113 feet; thence West 1855.90 feet; thence N.0°21'W. 100 feet, more or less, to the point of beginning.

PARCEL 'D'

Containing 4.20 Acres

Beginning at a point 15.07 chains South from the N.W. corner of the S.W. 1/4 of Section 26, T.2N., R.1W., S.L.B.&M.; and running thence South 5.18 chains more or less, to the North line of a 4 Rod street; thence North 89°53'E. along the North line of said street 15.25 chains; thence N. 5.18 chains; thence W. 15.25 chains to point of beginning. Less and excepting therefrom that portion lying within the bounds of 1800 West Street being approximately the Westerly 68 feet of said property.

Commencing at a point on the North side of a certain 4 Rod street N.89°53'E. 15.25 chains from a point 20.25 chains South of the N.W. corner of the S.W. 1/4 of Section 26, T.2N., R.1W., S.L.B.&M. United States Survey, thence running N.89°53'E. along the North side of street 16.6 chains; thence N.27°27'W. 5.81 chains; thence W. 13.9 chains; thence S. 5.18 chains to the point of commencement.

OVERALL BOUNDARY DESCRIPTION

Beginning at a point which is S.89°56'39"E. along the center of section line 602.77 feet from the West 1/4 corner of Section 26, T.2N., R.1W., S.L.B.&M.; thence continuing along said center of section line S.89°56'39"E. 824.81 feet; thence S.27°16'39"E. 1497.31 feet to a point on the North right-of-way line of 1500 South Street; thence along said North right-of-way line S.89°53'00"W. 2040.49 feet to a point on the East right-of-way line of 1800 West Street; thence along said East right-of-way line N.0°19'07"W. 522.30 feet; thence S.89°56'39"E. 535.51 feet; thence N.0°13'19"W. 814.00 feet to the point of beginning.

SURVEYORS CERTIFICATE

I, Jon B. Jensen, do hereby certify that I am a Registered Land Surveyor and that I hold certificate No. 6511 as prescribed by the laws of the State of Utah, and that I have made a survey of the described property. I further certify that this map depicts the findings of that survey.

MARCH 8, 1988
 DATE *Jon B. Jensen*
 JON B. JENSEN NO. 6511

REVISION:
 ADDED BURIED PIPELINE INFORMATION 3/17/88

PREPARED BY:
S.L. YOUNGBERG INC.
 LAND SURVEYORS
 880 SOUTH MAIN STREET, BOUNTIFUL, UTAH 84010 · 292-7312

PREPARED FOR:
MAVERIK COUNTRY STORES
 1431 SOUTH 1800 WEST, WOODS CROSS, UTAH 84087 · 295-5557

0198