

This map is provided solely for the purpose of assisting in locating the property and Cottonwood Title Insurance Agency, Inc. assumes no liability for variation, if any, with any actual survey.

NW. 1/4 OF SECTION 6, T.5N., R.1W., S.L.B. & M.

IN OGDEN CITY & RIVERDALE CITY

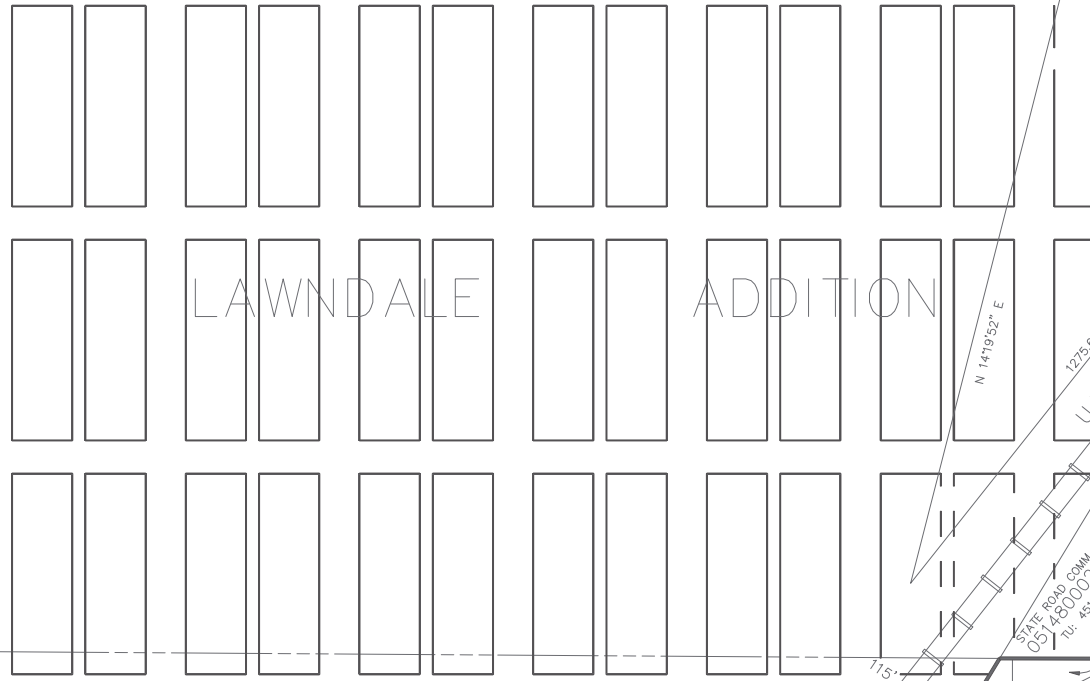
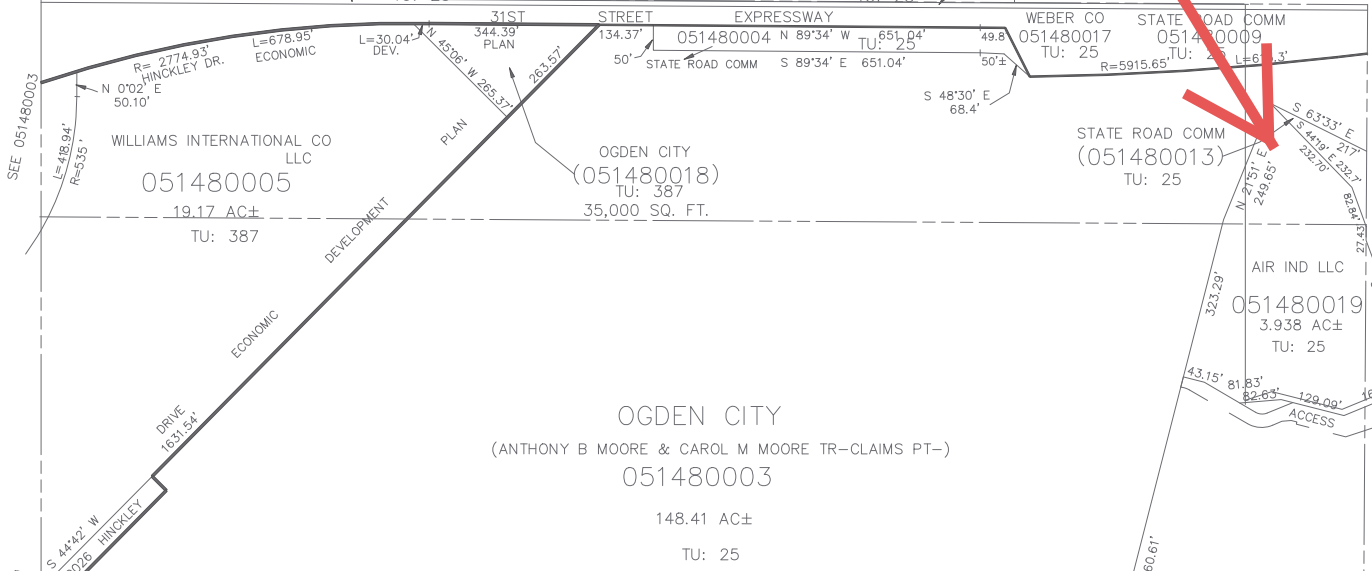
SCALE 1" = 200'

TAXING UNIT: 23, 25, 387, 451

OGDEN CITY (051480016)
TU: 25

SEE BK. 14, PG. 41

WEBER CO (051480015)
TU: 25



LAWNDALE ADDITION

SEE PAGE 145

SEE PAGE 143

INTERSTATE HIGHWAY NO. 15
SEE 051450036
SEE 051450010

SEE BK. 8
PG. 2

This map is provided solely for the purpose of assisting in locating the property and Cottonwood Title Insurance Agency, Inc. assumes no liability for variation, if any, with any actual survey.

NE. 1/4

143

SECTION 6, T.5N., R.1W., S.L.B. & M.

SEE BK. 14, PG. 40

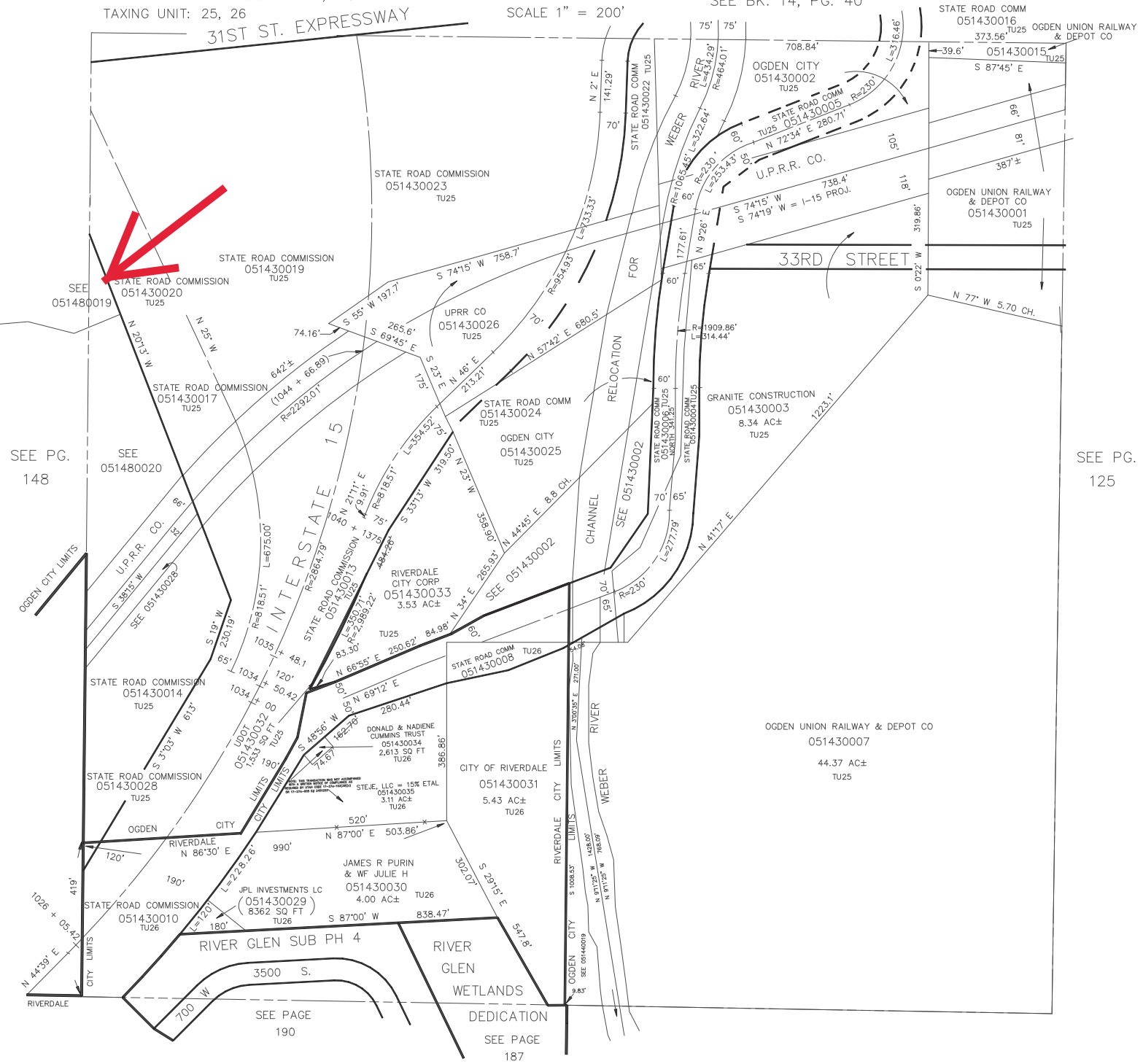
IN OGDEN CITY

SEE BK. 14, PG. 40

TAXING UNIT: 25, 26

SCALE 1" = 200'

31ST ST. EXPRESSWAY



SEE PG. 148

SEE PG. 125