

SILVER CREEK VILLAGE CENTER LOT 2 SUBDIVISION

LOCATED IN THE SOUTHWEST QUARTER OF SECTION 15
TOWNSHIP 1 SOUTH, RANGE 4 EAST,
SALT LAKE BASE AND MERIDIAN
SUMMIT COUNTY, UTAH

This map is provided solely for the purpose of assisting in locating the property and Cottonwood Title Insurance Agency, Inc. assumes no liability for variation, if any, with any actual survey.

LEGAL DESCRIPTION SILVER CREEK VILLAGE CENTER LOT 2:

All of Lot 2 of the Silver Creek Village Center Subdivision, recorded April 04, 2007 in the office of the Summit County Recorder as Entry number 0062976, Lot 5 being located in the Southwest quarter of Section 15, Township 1 South, Range 4 East, Salt Lake Base & Meridian.
Contains 83.78 acres, 3,699,510 square feet.
Contains 83 lots.

ADDRESS TABLE	STREET NAME	LOT #	ADDRESS
1	CONFLOWAY WAY	44	1400
2	CONFLOWAY WAY	45	1400
3	CONFLOWAY WAY	46	1400
4	CONFLOWAY WAY	47	1400
5	CONFLOWAY WAY	48	1400
6	CONFLOWAY WAY	49	1400
7	CONFLOWAY WAY	50	1400
8	CONFLOWAY WAY	51	1400
9	CONFLOWAY WAY	52	1400
10	CONFLOWAY WAY	53	1400
11	CONFLOWAY WAY	54	1400
12	CONFLOWAY WAY	55	1400
13	CONFLOWAY WAY	56	1400
14	CONFLOWAY WAY	57	1400
15	CONFLOWAY WAY	58	1400
16	CONFLOWAY WAY	59	1400
17	CONFLOWAY WAY	60	1400
18	CONFLOWAY WAY	61	1400
19	CONFLOWAY WAY	62	1400
20	CONFLOWAY WAY	63	1400
21	CONFLOWAY WAY	64	1400
22	CONFLOWAY WAY	65	1400
23	CONFLOWAY WAY	66	1400
24	CONFLOWAY WAY	67	1400
25	CONFLOWAY WAY	68	1400
26	CONFLOWAY WAY	69	1400
27	CONFLOWAY WAY	70	1400
28	CONFLOWAY WAY	71	1400
29	CONFLOWAY WAY	72	1400
30	CONFLOWAY WAY	73	1400
31	CONFLOWAY WAY	74	1400
32	CONFLOWAY WAY	75	1400
33	CONFLOWAY WAY	76	1400
34	CONFLOWAY WAY	77	1400
35	CONFLOWAY WAY	78	1400
36	CONFLOWAY WAY	79	1400
37	CONFLOWAY WAY	80	1400
38	CONFLOWAY WAY	81	1400
39	CONFLOWAY WAY	82	1400
40	CONFLOWAY WAY	83	1400

CURVE	BEARING	DELTA	CHORD BEARING	CHORD LENGTH	LINE LENGTH	BEARING
C1	254.00°	381.37'	80°43'54"	1079°22'22"	341.50'	11.40°
C2	87.50°	281.14'	107°48'42"	1079°40'54"	179.81'	12.40°
C3	53.50°	207.62'	48°59'51"	1079°10'07"	43.88'	14.40°
C4	15.00°	23.50'	90°20'00"	1079°09'48"	21.21'	15.40°
C5	15.00°	23.50'	90°20'00"	1079°09'48"	21.21'	16.40°
C6	15.00°	23.50'	90°20'00"	1079°09'48"	21.21'	17.40°
C7	15.00°	23.50'	90°20'00"	1079°09'48"	21.21'	18.40°
C8	15.00°	23.50'	90°20'00"	1079°09'48"	21.21'	19.40°
C9	15.00°	23.50'	90°20'00"	1079°09'48"	21.21'	20.40°
C10	15.00°	23.50'	90°20'00"	1079°09'48"	21.21'	21.40°
C11	15.00°	23.50'	90°20'00"	1079°09'48"	21.21'	22.40°
C12	15.00°	23.50'	90°20'00"	1079°09'48"	21.21'	23.40°
C13	15.00°	23.50'	90°20'00"	1079°09'48"	21.21'	24.40°
C14	15.00°	23.50'	90°20'00"	1079°09'48"	21.21'	25.40°
C15	15.00°	23.50'	90°20'00"	1079°09'48"	21.21'	26.40°
C16	15.00°	23.50'	90°20'00"	1079°09'48"	21.21'	27.40°
C17	15.00°	23.50'	90°20'00"	1079°09'48"	21.21'	28.40°
C18	15.00°	23.50'	90°20'00"	1079°09'48"	21.21'	29.40°
C19	15.00°	23.50'	90°20'00"	1079°09'48"	21.21'	30.40°
C20	15.00°	23.50'	90°20'00"	1079°09'48"	21.21'	31.40°
C21	15.00°	23.50'	90°20'00"	1079°09'48"	21.21'	32.40°
C22	15.00°	23.50'	90°20'00"	1079°09'48"	21.21'	33.40°
C23	15.00°	23.50'	90°20'00"	1079°09'48"	21.21'	34.40°
C24	15.00°	23.50'	90°20'00"	1079°09'48"	21.21'	35.40°
C25	15.00°	23.50'	90°20'00"	1079°09'48"	21.21'	36.40°
C26	15.00°	23.50'	90°20'00"	1079°09'48"	21.21'	37.40°
C27	15.00°	23.50'	90°20'00"	1079°09'48"	21.21'	38.40°
C28	15.00°	23.50'	90°20'00"	1079°09'48"	21.21'	39.40°
C29	15.00°	23.50'	90°20'00"	1079°09'48"	21.21'	40.40°
C30	15.00°	23.50'	90°20'00"	1079°09'48"	21.21'	41.40°
C31	15.00°	23.50'	90°20'00"	1079°09'48"	21.21'	42.40°
C32	15.00°	23.50'	90°20'00"	1079°09'48"	21.21'	43.40°
C33	15.00°	23.50'	90°20'00"	1079°09'48"	21.21'	44.40°
C34	15.00°	23.50'	90°20'00"	1079°09'48"	21.21'	45.40°
C35	15.00°	23.50'	90°20'00"	1079°09'48"	21.21'	46.40°
C36	15.00°	23.50'	90°20'00"	1079°09'48"	21.21'	47.40°
C37	15.00°	23.50'	90°20'00"	1079°09'48"	21.21'	48.40°
C38	15.00°	23.50'	90°20'00"	1079°09'48"	21.21'	49.40°
C39	15.00°	23.50'	90°20'00"	1079°09'48"	21.21'	50.40°
C40	15.00°	23.50'	90°20'00"	1079°09'48"	21.21'	51.40°
C41	15.00°	23.50'	90°20'00"	1079°09'48"	21.21'	52.40°
C42	15.00°	23.50'	90°20'00"	1079°09'48"	21.21'	53.40°
C43	15.00°	23.50'	90°20'00"	1079°09'48"	21.21'	54.40°
C44	15.00°	23.50'	90°20'00"	1079°09'48"	21.21'	55.40°
C45	15.00°	23.50'	90°20'00"	1079°09'48"	21.21'	56.40°
C46	15.00°	23.50'	90°20'00"	1079°09'48"	21.21'	57.40°
C47	15.00°	23.50'	90°20'00"	1079°09'48"	21.21'	58.40°
C48	15.00°	23.50'	90°20'00"	1079°09'48"	21.21'	59.40°
C49	15.00°	23.50'	90°20'00"	1079°09'48"	21.21'	60.40°
C50	15.00°	23.50'	90°20'00"	1079°09'48"	21.21'	61.40°
C51	15.00°	23.50'	90°20'00"	1079°09'48"	21.21'	62.40°
C52	15.00°	23.50'	90°20'00"	1079°09'48"	21.21'	63.40°
C53	15.00°	23.50'	90°20'00"	1079°09'48"	21.21'	64.40°
C54	15.00°	23.50'	90°20'00"	1079°09'48"	21.21'	65.40°
C55	15.00°	23.50'	90°20'00"	1079°09'48"	21.21'	66.40°
C56	15.00°	23.50'	90°20'00"	1079°09'48"	21.21'	67.40°
C57	15.00°	23.50'	90°20'00"	1079°09'48"	21.21'	68.40°
C58	15.00°	23.50'	90°20'00"	1079°09'48"	21.21'	69.40°
C59	15.00°	23.50'	90°20'00"	1079°09'48"	21.21'	70.40°
C60	15.00°	23.50'	90°20'00"	1079°09'48"	21.21'	71.40°
C61	15.00°	23.50'	90°20'00"	1079°09'48"	21.21'	72.40°
C62	15.00°	23.50'	90°20'00"	1079°09'48"	21.21'	73.40°
C63	15.00°	23.50'	90°20'00"	1079°09'48"	21.21'	74.40°
C64	15.00°	23.50'	90°20'00"	1079°09'48"	21.21'	75.40°
C65	15.00°	23.50'	90°20'00"	1079°09'48"	21.21'	76.40°
C66	15.00°	23.50'	90°20'00"	1079°09'48"	21.21'	77.40°
C67	15.00°	23.50'	90°20'00"	1079°09'48"	21.21'	78.40°
C68	15.00°	23.50'	90°20'00"	1079°09'48"	21.21'	79.40°
C69	15.00°	23.50'	90°20'00"	1079°09'48"	21.21'	80.40°
C70	15.00°	23.50'	90°20'00"	1079°09'48"	21.21'	81.40°
C71	15.00°	23.50'	90°20'00"	1079°09'48"	21.21'	82.40°
C72	15.00°	23.50'	90°20'00"	1079°09'48"	21.21'	83.40°
C73	15.00°	23.50'	90°20'00"	1079°09'48"	21.21'	84.40°
C74	15.00°	23.50'	90°20'00"	1079°09'48"	21.21'	85.40°
C75	15.00°	23.50'	90°20'00"	1079°09'48"	21.21'	86.40°
C76	15.00°	23.50'	90°20'00"	1079°09'48"	21.21'	87.40°
C77	15.00°	23.50'	90°20'00"	1079°09'48"	21.21'	88.40°
C78	15.00°	23.50'	90°20'00"	1079°09'48"	21.21'	89.40°
C79	15.00°	23.50'	90°20'00"	1079°09'48"	21.21'	90.40°
C80	15.00°	23.50'	90°20'00"	1079°09'48"	21.21'	91.40°
C81	15.00°	23.50'	90°20'00"	1079°09'48"	21.21'	92.40°
C82	15.00°	23.50'	90°20'00"	1079°09'48"	21.21'	93.40°
C83	15.00°	23.50'	90°20'00"	1079°09'48"	21.21'	94.40°
C84	15.00°	23.50'	90°20'00"	1079°09'48"	21.21'	95.40°
C85	15.00°	23.50'	90°20'00"	1079°09'48"	21.21'	96.40°
C86	15.00°	23.50'	90°20'00"	1079°09'48"	21.21'	97.40°
C87	15.00°	23.50'	90°20'00"	1079°09'48"	21.21'	98.40°
C88	15.00°	23.50'	90°20'00"	1079°09'48"	21.21'	99.40°
C89	15.00°	23.50'	90°20'00"	1079°09'48"	21.21'	100.40°
C90	15.00°	23.50'	90°20'00"	1079°09'48"	21.21'	101.40°
C91	15.00°	23.50'	90°20'00"	1079°09'48"	21.21'	102.40°
C92	15.00°	23.50'	90°20'00"	1079°09'48"	21.21'	103.40°
C93	15.00°	23.50'	90°20'00"	1079°09'48"	21.21'	104.40°
C94	15.00°	23.50'	90°20'00"	1079°09'48"	21.21'	105.40°
C95	15.00°	23.50'	90°20'00"	1079°09'48"	21.21'	106.40°
C96	15.00°	23.50'	90°20'00"	1079°09'48"	21.21'	107.40°
C97	15.00°	23.50'	90°20'00"	1079°09'48"	21.21'	108.40°
C98	15.00°	23.50'	90°20'00"	1079°09'48"	21.21'	109.40°
C99	15.00°	23.50'	90°20'00"	1079°09'48"	21.21'	110.40°
C100	15.00°	23.50'	90°20'00"	1079°09'48"	21.21'	111.40°

CURVE	BEARING	DELTA	CHORD BEARING	CHORD LENGTH	LINE LENGTH	BEARING
L1	63.00°				143.70°	11.40°
L2	63.00°				143.70°	12.40°
L3	63.00°				143.70°	13.40°
L4	63.00°				143.70°	14.40°
L5	63.00°				143.70°	15.40°
L6	63.00°				143.70°	16.40°
L7	63.00°				143.70°	17.40°
L8	63.00°				143.70°	18.40°
L9	63.00°				143.70°	19.40°
L10	63.00°				143.70°	20.40°
L11	63.00°				143.70°	21.40°
L12	63.00°				143.70°	22.40°
L13	63.00°				143.70°	23.40°
L14	63.00°				143.70°	24.40°
L15	63.00°				143.70°	25.40°
L16	63.00°				143.70°	26.40°
L17	63.00°				143.70°	27.40°
L18	63.00°				143.70°	28.40°
L19	63.00°				143.70°	29.40°
L20	63.00°				143.70°	30.40°
L21	63.00°				143.70°	31.40°
L22	63.00°				143.70°	32.40°
L23	63.00°				143.70°	33.40°
L24	63.00°				143.70°	34.40°
L25	63.00°				143.70°	35.40°
L26	63.00°				143.70°	36.40°
L27	63.00°				143.70°	37.40°
L28	63.00°				143.70°	38.40°
L29	63.00°				143.70°	39.40°
L30	63.00°				143.70°	40.40°
L31	63.00°				143.70°	41.40°
L32	63.00°				143.70°	42.40°
L33	63.00°				143.70°	43.40°
L34	63.00°				143.70°	44.40°

SILVER CREEK VILLAGE CENTER LOT 2 SUBDIVISION

LOCATED IN THE SOUTHWEST QUARTER OF SECTION 15
TOWNSHIP 1 SOUTH, RANGE 4 EAST,
SALT LAKE BASE AND MERIDIAN
SUMMIT COUNTY, UTAH

DEVELOPMENT STANDARDS
See Major Development Agreement, Entry 1021271, recorded 08-20-2015 in the office of the
Summit County Recorder.

<p>LOTS 55-58 (Parcel 26.1) Lot Use - Single Family 15 feet to front facade 12 feet to porch or balcony 12 feet to front facade 40% 5 feet to home or garage 2.5 feet to home or garage when adjacent to River Birch Trail 20 feet to home 5 feet or less or 20 feet or more to rear loaded garage 32 feet 15 feet from detached garage to house 15 feet from side lot line 2 Off Street stalls per Unit</p>	<p>LOTS 59-79 (Parcels 23.1, 23.2, 23.3 and 23.4) Lot Use - Single Family 6,000 SF 15 feet to front facade 12 feet to porch or balcony 20 feet to front facade 40% 5 feet to home or garage 2.5 feet to home or garage when adjacent to Mountain Ridge Drive and Village Green Trail 20 feet to home 5 feet or less or 20 feet or more to rear loaded garage 32 feet 15 feet from detached garage to house 15 feet from side lot line 2 Off Street stalls per Unit</p>
<p>LOTS 80-83 (Parcel 26.2) Lot Use - Single Family 15 feet to front facade 12 feet to porch or balcony 12 feet to front facade 40% 4 feet to home or garage 2.5 feet to home or garage when adjacent to Mountain Ridge Drive and Village Green Trail 20 feet to home 5 feet or less or 20 feet or more to rear loaded garage 32 feet 15 feet from detached garage to house 15 feet from side lot line 2 Off Street stalls per Unit</p>	<p>LOTS 84-87 (Parcel 26.3) Lot Use - Single Family 15 feet to front facade 12 feet to porch or balcony 12 feet to front facade 40% 5 feet to home or garage 2.5 feet to home or garage when adjacent to Mountain Ridge Drive and Village Green Trail 20 feet to home 5 feet or less or 20 feet or more to rear loaded garage 32 feet 15 feet from detached garage to house 15 feet from side lot line 2 Off Street stalls per Unit</p>

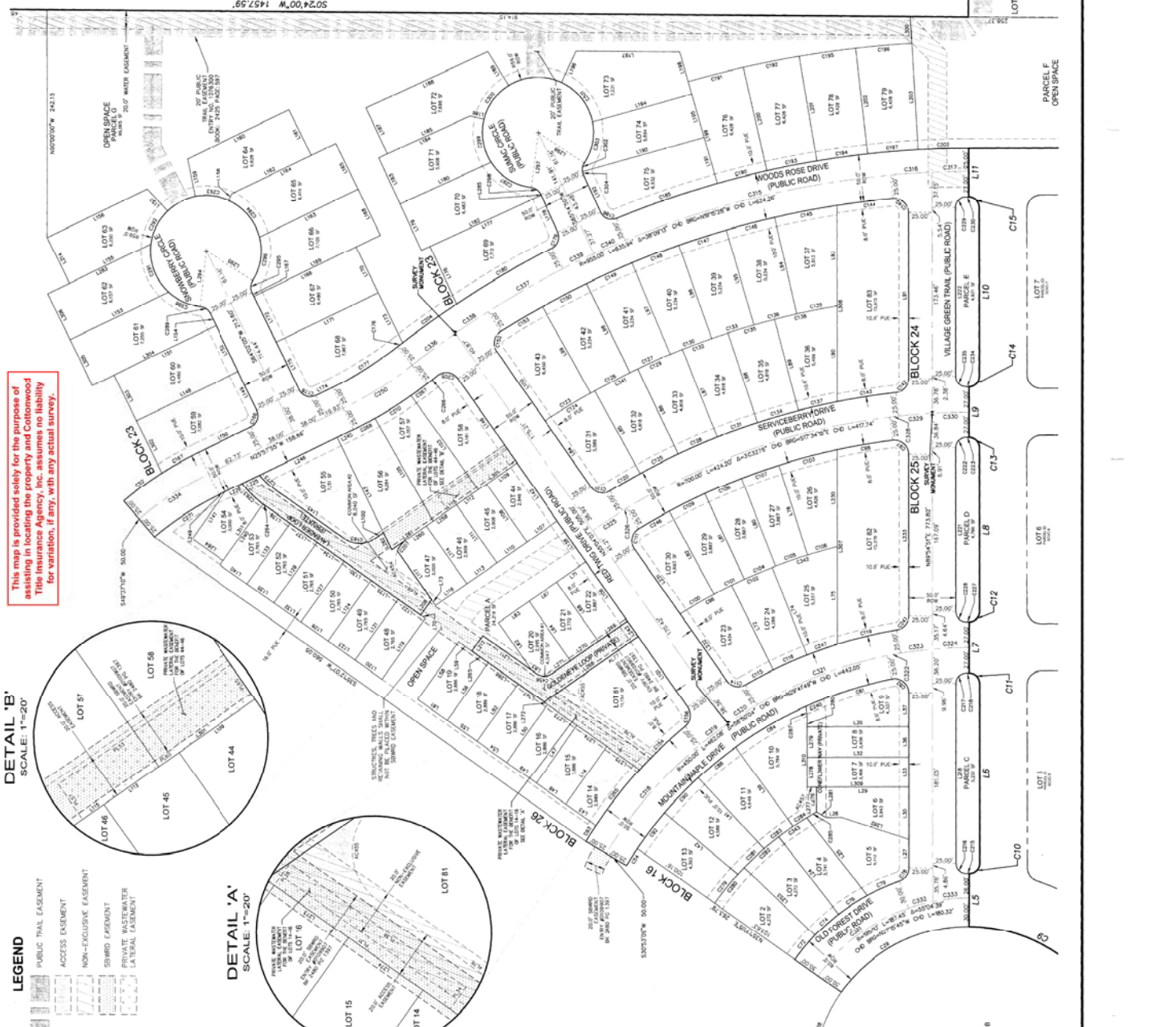
<p>LOTS 88-91 (Parcel 25.1) Lot Use - Single Family 15 feet to front facade 12 feet to porch or balcony 12 feet to front facade 40% 5 feet to home or garage 2.5 feet to home or garage when adjacent to Mountain Ridge Drive and Village Green Trail 20 feet to home 5 feet or less or 20 feet or more to rear loaded garage 32 feet 15 feet from detached garage to house 15 feet from side lot line 2 Off Street stalls per Unit</p>	<p>LOTS 92-95 (Parcel 25.2) Lot Use - Single Family 15 feet to front facade 12 feet to porch or balcony 12 feet to front facade 40% 5 feet to home or garage 2.5 feet to home or garage when adjacent to Mountain Ridge Drive and Village Green Trail 20 feet to home 5 feet or less or 20 feet or more to rear loaded garage 32 feet 15 feet from detached garage to house 15 feet from side lot line 2 Off Street stalls per Unit</p>
<p>LOTS 96-99 (Parcel 25.3) Lot Use - Single Family 15 feet to front facade 12 feet to porch or balcony 12 feet to front facade 40% 5 feet to home or garage 2.5 feet to home or garage when adjacent to Mountain Ridge Drive and Village Green Trail 20 feet to home 5 feet or less or 20 feet or more to rear loaded garage 32 feet 15 feet from detached garage to house 15 feet from side lot line 2 Off Street stalls per Unit</p>	<p>LOTS 100-103 (Parcel 25.4) Lot Use - Single Family 15 feet to front facade 12 feet to porch or balcony 12 feet to front facade 40% 5 feet to home or garage 2.5 feet to home or garage when adjacent to Mountain Ridge Drive and Village Green Trail 20 feet to home 5 feet or less or 20 feet or more to rear loaded garage 32 feet 15 feet from detached garage to house 15 feet from side lot line 2 Off Street stalls per Unit</p>

<p>LOTS 104-107 (Parcel 25.5) Lot Use - Single Family 15 feet to front facade 12 feet to porch or balcony 12 feet to front facade 40% 5 feet to home or garage 2.5 feet to home or garage when adjacent to Mountain Ridge Drive and Village Green Trail 20 feet to home 5 feet or less or 20 feet or more to rear loaded garage 32 feet 15 feet from detached garage to house 15 feet from side lot line 2 Off Street stalls per Unit</p>	<p>LOTS 108-111 (Parcel 25.6) Lot Use - Single Family 15 feet to front facade 12 feet to porch or balcony 12 feet to front facade 40% 5 feet to home or garage 2.5 feet to home or garage when adjacent to Mountain Ridge Drive and Village Green Trail 20 feet to home 5 feet or less or 20 feet or more to rear loaded garage 32 feet 15 feet from detached garage to house 15 feet from side lot line 2 Off Street stalls per Unit</p>
<p>LOTS 112-115 (Parcel 25.7) Lot Use - Single Family 15 feet to front facade 12 feet to porch or balcony 12 feet to front facade 40% 5 feet to home or garage 2.5 feet to home or garage when adjacent to Mountain Ridge Drive and Village Green Trail 20 feet to home 5 feet or less or 20 feet or more to rear loaded garage 32 feet 15 feet from detached garage to house 15 feet from side lot line 2 Off Street stalls per Unit</p>	<p>LOTS 116-119 (Parcel 25.8) Lot Use - Single Family 15 feet to front facade 12 feet to porch or balcony 12 feet to front facade 40% 5 feet to home or garage 2.5 feet to home or garage when adjacent to Mountain Ridge Drive and Village Green Trail 20 feet to home 5 feet or less or 20 feet or more to rear loaded garage 32 feet 15 feet from detached garage to house 15 feet from side lot line 2 Off Street stalls per Unit</p>

<p>LOTS 120-123 (Parcel 25.9) Lot Use - Single Family 15 feet to front facade 12 feet to porch or balcony 12 feet to front facade 40% 5 feet to home or garage 2.5 feet to home or garage when adjacent to Mountain Ridge Drive and Village Green Trail 20 feet to home 5 feet or less or 20 feet or more to rear loaded garage 32 feet 15 feet from detached garage to house 15 feet from side lot line 2 Off Street stalls per Unit</p>	<p>LOTS 124-127 (Parcel 25.10) Lot Use - Single Family 15 feet to front facade 12 feet to porch or balcony 12 feet to front facade 40% 5 feet to home or garage 2.5 feet to home or garage when adjacent to Mountain Ridge Drive and Village Green Trail 20 feet to home 5 feet or less or 20 feet or more to rear loaded garage 32 feet 15 feet from detached garage to house 15 feet from side lot line 2 Off Street stalls per Unit</p>
<p>LOTS 128-131 (Parcel 25.11) Lot Use - Single Family 15 feet to front facade 12 feet to porch or balcony 12 feet to front facade 40% 5 feet to home or garage 2.5 feet to home or garage when adjacent to Mountain Ridge Drive and Village Green Trail 20 feet to home 5 feet or less or 20 feet or more to rear loaded garage 32 feet 15 feet from detached garage to house 15 feet from side lot line 2 Off Street stalls per Unit</p>	<p>LOTS 132-135 (Parcel 25.12) Lot Use - Single Family 15 feet to front facade 12 feet to porch or balcony 12 feet to front facade 40% 5 feet to home or garage 2.5 feet to home or garage when adjacent to Mountain Ridge Drive and Village Green Trail 20 feet to home 5 feet or less or 20 feet or more to rear loaded garage 32 feet 15 feet from detached garage to house 15 feet from side lot line 2 Off Street stalls per Unit</p>

<p>LOTS 136-139 (Parcel 25.13) Lot Use - Single Family 15 feet to front facade 12 feet to porch or balcony 12 feet to front facade 40% 5 feet to home or garage 2.5 feet to home or garage when adjacent to Mountain Ridge Drive and Village Green Trail 20 feet to home 5 feet or less or 20 feet or more to rear loaded garage 32 feet 15 feet from detached garage to house 15 feet from side lot line 2 Off Street stalls per Unit</p>	<p>LOTS 140-143 (Parcel 25.14) Lot Use - Single Family 15 feet to front facade 12 feet to porch or balcony 12 feet to front facade 40% 5 feet to home or garage 2.5 feet to home or garage when adjacent to Mountain Ridge Drive and Village Green Trail 20 feet to home 5 feet or less or 20 feet or more to rear loaded garage 32 feet 15 feet from detached garage to house 15 feet from side lot line 2 Off Street stalls per Unit</p>
<p>LOTS 144-147 (Parcel 25.15) Lot Use - Single Family 15 feet to front facade 12 feet to porch or balcony 12 feet to front facade 40% 5 feet to home or garage 2.5 feet to home or garage when adjacent to Mountain Ridge Drive and Village Green Trail 20 feet to home 5 feet or less or 20 feet or more to rear loaded garage 32 feet 15 feet from detached garage to house 15 feet from side lot line 2 Off Street stalls per Unit</p>	<p>LOTS 148-151 (Parcel 25.16) Lot Use - Single Family 15 feet to front facade 12 feet to porch or balcony 12 feet to front facade 40% 5 feet to home or garage 2.5 feet to home or garage when adjacent to Mountain Ridge Drive and Village Green Trail 20 feet to home 5 feet or less or 20 feet or more to rear loaded garage 32 feet 15 feet from detached garage to house 15 feet from side lot line 2 Off Street stalls per Unit</p>

<p>LOTS 152-155 (Parcel 25.17) Lot Use - Single Family 15 feet to front facade 12 feet to porch or balcony 12 feet to front facade 40% 5 feet to home or garage 2.5 feet to home or garage when adjacent to Mountain Ridge Drive and Village Green Trail 20 feet to home 5 feet or less or 20 feet or more to rear loaded garage 32 feet 15 feet from detached garage to house 15 feet from side lot line 2 Off Street stalls per Unit</p>	<p>LOTS 156-159 (Parcel 25.18) Lot Use - Single Family 15 feet to front facade 12 feet to porch or balcony 12 feet to front facade 40% 5 feet to home or garage 2.5 feet to home or garage when adjacent to Mountain Ridge Drive and Village Green Trail 20 feet to home 5 feet or less or 20 feet or more to rear loaded garage 32 feet 15 feet from detached garage to house 15 feet from side lot line 2 Off Street stalls per Unit</p>
<p>LOTS 160-163 (Parcel 25.19) Lot Use - Single Family 15 feet to front facade 12 feet to porch or balcony 12 feet to front facade 40% 5 feet to home or garage 2.5 feet to home or garage when adjacent to Mountain Ridge Drive and Village Green Trail 20 feet to home 5 feet or less or 20 feet or more to rear loaded garage 32 feet 15 feet from detached garage to house 15 feet from side lot line 2 Off Street stalls per Unit</p>	<p>LOTS 164-167 (Parcel 25.20) Lot Use - Single Family 15 feet to front facade 12 feet to porch or balcony 12 feet to front facade 40% 5 feet to home or garage 2.5 feet to home or garage when adjacent to Mountain Ridge Drive and Village Green Trail 20 feet to home 5 feet or less or 20 feet or more to rear loaded garage 32 feet 15 feet from detached garage to house 15 feet from side lot line 2 Off Street stalls per Unit</p>



This map is provided solely for the purpose of assisting in locating the property and Cottonwood Title Insurance Agency, Inc. assumes no liability for variation, if any, with any actual survey.

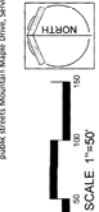
DETAIL 'B'
SCALE: 1"=20'

DETAIL 'A'
SCALE: 1"=20'

- LEGEND**
- PUBLIC TRAIL EASEMENT
 - ACCESS EASEMENT
 - NON-EXCLUSIVE EASEMENT
 - SHOULDER EASEMENT
 - PRIVATE MASTER WATER LATERAL EASEMENT

ENTRY NO. 01402101
 11/21/2018 10:41 AM
 CORNERPOINT PROFESSIONAL LAND SURVEYS, INC.
 2015 So. 30th Avenue, St. George, UT 84770
 435.763.8888
 info@cornerpointland.com

CORNERPOINT
 PROFESSIONAL LAND SURVEYS, INC.
 2015 So. 30th Avenue, St. George, UT 84770
 435.763.8888
 info@cornerpointland.com



SILVER CREEK VILLAGE CENTER LOT 2 SUBDIVISION

LOCATED IN THE SOUTHWEST QUARTER OF SECTION 15
TOWNSHIP 1 SOUTH, RANGE 4 EAST,
SALT LAKE BASE AND MERIDIAN
SUMMIT COUNTY, UTAH

This map is provided solely for the purpose of
assisting in locating the property and Cottonwood
Title Insurance Agency, Inc. assumes no liability
for variation, if any, with any actual survey.

LINE NUMBER	LINE LENGTH	BEARING	LINE TABLE	LINE LENGTH	BEARING	LINE TABLE
C179	93.00	S47.00°E	1179	93.00	S47.00°E	1179
C180	100.00	S45.00°E	1180	100.00	S45.00°E	1180
C181	100.00	S45.00°E	1181	100.00	S45.00°E	1181
C182	100.00	S45.00°E	1182	100.00	S45.00°E	1182
C183	100.00	S45.00°E	1183	100.00	S45.00°E	1183
C184	100.00	S45.00°E	1184	100.00	S45.00°E	1184
C185	100.00	S45.00°E	1185	100.00	S45.00°E	1185
C186	100.00	S45.00°E	1186	100.00	S45.00°E	1186
C187	100.00	S45.00°E	1187	100.00	S45.00°E	1187
C188	100.00	S45.00°E	1188	100.00	S45.00°E	1188
C189	100.00	S45.00°E	1189	100.00	S45.00°E	1189
C190	100.00	S45.00°E	1190	100.00	S45.00°E	1190
C191	100.00	S45.00°E	1191	100.00	S45.00°E	1191
C192	100.00	S45.00°E	1192	100.00	S45.00°E	1192
C193	100.00	S45.00°E	1193	100.00	S45.00°E	1193
C194	100.00	S45.00°E	1194	100.00	S45.00°E	1194
C195	100.00	S45.00°E	1195	100.00	S45.00°E	1195
C196	100.00	S45.00°E	1196	100.00	S45.00°E	1196
C197	100.00	S45.00°E	1197	100.00	S45.00°E	1197
C198	100.00	S45.00°E	1198	100.00	S45.00°E	1198
C199	100.00	S45.00°E	1199	100.00	S45.00°E	1199
C200	100.00	S45.00°E	1200	100.00	S45.00°E	1200
C201	100.00	S45.00°E	1201	100.00	S45.00°E	1201
C202	100.00	S45.00°E	1202	100.00	S45.00°E	1202
C203	100.00	S45.00°E	1203	100.00	S45.00°E	1203
C204	100.00	S45.00°E	1204	100.00	S45.00°E	1204
C205	100.00	S45.00°E	1205	100.00	S45.00°E	1205
C206	100.00	S45.00°E	1206	100.00	S45.00°E	1206
C207	100.00	S45.00°E	1207	100.00	S45.00°E	1207
C208	100.00	S45.00°E	1208	100.00	S45.00°E	1208
C209	100.00	S45.00°E	1209	100.00	S45.00°E	1209
C210	100.00	S45.00°E	1210	100.00	S45.00°E	1210
C211	100.00	S45.00°E	1211	100.00	S45.00°E	1211
C212	100.00	S45.00°E	1212	100.00	S45.00°E	1212
C213	100.00	S45.00°E	1213	100.00	S45.00°E	1213
C214	100.00	S45.00°E	1214	100.00	S45.00°E	1214
C215	100.00	S45.00°E	1215	100.00	S45.00°E	1215
C216	100.00	S45.00°E	1216	100.00	S45.00°E	1216
C217	100.00	S45.00°E	1217	100.00	S45.00°E	1217
C218	100.00	S45.00°E	1218	100.00	S45.00°E	1218
C219	100.00	S45.00°E	1219	100.00	S45.00°E	1219
C220	100.00	S45.00°E	1220	100.00	S45.00°E	1220
C221	100.00	S45.00°E	1221	100.00	S45.00°E	1221
C222	100.00	S45.00°E	1222	100.00	S45.00°E	1222
C223	100.00	S45.00°E	1223	100.00	S45.00°E	1223
C224	100.00	S45.00°E	1224	100.00	S45.00°E	1224
C225	100.00	S45.00°E	1225	100.00	S45.00°E	1225
C226	100.00	S45.00°E	1226	100.00	S45.00°E	1226
C227	100.00	S45.00°E	1227	100.00	S45.00°E	1227
C228	100.00	S45.00°E	1228	100.00	S45.00°E	1228
C229	100.00	S45.00°E	1229	100.00	S45.00°E	1229
C230	100.00	S45.00°E	1230	100.00	S45.00°E	1230
C231	100.00	S45.00°E	1231	100.00	S45.00°E	1231
C232	100.00	S45.00°E	1232	100.00	S45.00°E	1232
C233	100.00	S45.00°E	1233	100.00	S45.00°E	1233
C234	100.00	S45.00°E	1234	100.00	S45.00°E	1234
C235	100.00	S45.00°E	1235	100.00	S45.00°E	1235
C236	100.00	S45.00°E	1236	100.00	S45.00°E	1236
C237	100.00	S45.00°E	1237	100.00	S45.00°E	1237
C238	100.00	S45.00°E	1238	100.00	S45.00°E	1238
C239	100.00	S45.00°E	1239	100.00	S45.00°E	1239
C240	100.00	S45.00°E	1240	100.00	S45.00°E	1240
C241	100.00	S45.00°E	1241	100.00	S45.00°E	1241
C242	100.00	S45.00°E	1242	100.00	S45.00°E	1242
C243	100.00	S45.00°E	1243	100.00	S45.00°E	1243
C244	100.00	S45.00°E	1244	100.00	S45.00°E	1244
C245	100.00	S45.00°E	1245	100.00	S45.00°E	1245
C246	100.00	S45.00°E	1246	100.00	S45.00°E	1246
C247	100.00	S45.00°E	1247	100.00	S45.00°E	1247
C248	100.00	S45.00°E	1248	100.00	S45.00°E	1248
C249	100.00	S45.00°E	1249	100.00	S45.00°E	1249
C250	100.00	S45.00°E	1250	100.00	S45.00°E	1250
C251	100.00	S45.00°E	1251	100.00	S45.00°E	1251
C252	100.00	S45.00°E	1252	100.00	S45.00°E	1252
C253	100.00	S45.00°E	1253	100.00	S45.00°E	1253
C254	100.00	S45.00°E	1254	100.00	S45.00°E	1254
C255	100.00	S45.00°E	1255	100.00	S45.00°E	1255
C256	100.00	S45.00°E	1256	100.00	S45.00°E	1256
C257	100.00	S45.00°E	1257	100.00	S45.00°E	1257
C258	100.00	S45.00°E	1258	100.00	S45.00°E	1258
C259	100.00	S45.00°E	1259	100.00	S45.00°E	1259
C260	100.00	S45.00°E	1260	100.00	S45.00°E	1260
C261	100.00	S45.00°E	1261	100.00	S45.00°E	1261
C262	100.00	S45.00°E	1262	100.00	S45.00°E	1262
C263	100.00	S45.00°E	1263	100.00	S45.00°E	1263
C264	100.00	S45.00°E	1264	100.00	S45.00°E	1264
C265	100.00	S45.00°E	1265	100.00	S45.00°E	1265
C266	100.00	S45.00°E	1266	100.00	S45.00°E	1266
C267	100.00	S45.00°E	1267	100.00	S45.00°E	1267
C268	100.00	S45.00°E	1268	100.00	S45.00°E	1268
C269	100.00	S45.00°E	1269	100.00	S45.00°E	1269
C270	100.00	S45.00°E	1270	100.00	S45.00°E	1270
C271	100.00	S45.00°E	1271	100.00	S45.00°E	1271
C272	100.00	S45.00°E	1272	100.00	S45.00°E	1272
C273	100.00	S45.00°E	1273	100.00	S45.00°E	1273
C274	100.00	S45.00°E	1274	100.00	S45.00°E	1274
C275	100.00	S45.00°E	1275	100.00	S45.00°E	1275
C276	100.00	S45.00°E	1276	100.00	S45.00°E	1276
C277	100.00	S45.00°E	1277	100.00	S45.00°E	1277
C278	100.00	S45.00°E	1278	100.00	S45.00°E	1278
C279	100.00	S45.00°E	1279	100.00	S45.00°E	1279
C280	100.00	S45.00°E	1280	100.00	S45.00°E	1280
C281	100.00	S45.00°E	1281	100.00	S45.00°E	1281
C282	100.00	S45.00°E	1282	100.00	S45.00°E	1282
C283	100.00	S45.00°E	1283	100.00	S45.00°E	1283
C284	100.00	S45.00°E	1284	100.00	S45.00°E	1284
C285	100.00	S45.00°E	1285	100.00	S45.00°E	1285
C286	100.00	S45.00°E	1286	100.00	S45.00°E	1286
C287	100.00	S45.00°E	1287	100.00	S45.00°E	1287
C288	100.00	S45.00°E	1288	100.00	S45.00°E	1288
C289	100.00	S45.00°E	1289	100.00	S45.00°E	1289
C290	100.00	S45.00°E	1290	100.00	S45.00°E	1290
C291	100.00	S45.00°E	1291	100.00	S45.00°E	1291
C292	100.00	S45.00°E	1292	100.00	S45.00°E	1292
C293	100.00	S45.00°E	1293	100.00	S45.00°E	1293
C294	100.00	S45.00°E	1294	100.00	S45.00°E	1294
C295	100.00	S45.00°E	1295	100.00	S45.00°E	1295
C296	100.00	S45.00°E	1296	100.00	S45.00°E	1296
C297	100.00	S45.00°E	1297	100.00	S45.00°E	1297
C298	100.00	S45.00°E	1298	100.00	S45.00°E	1298
C299	100.00	S45.00°E	1299	100.00	S45.00°E	1299
C300	100.00	S45.00°E	1300	100.00	S45.00°E	1300
C301	100.00	S45.00°E	1301	100.00	S45.00°E	1301
C302	100.00	S45.00°E	1302	100.00	S45.00°E	1302
C303	100.00	S45.00°E	1303	100.00	S45.00°E	1303
C304	100.00	S45.00°E	1304	100.00	S45.00°E	1304
C305	100.00	S45.00°E	1305	100.00	S45.00°E	1305
C306	100.00	S45.00°E	1306	100.00	S45.00°E	1306
C307	100.00	S45.00°E	1307	100.00	S45.00°E	1307
C308	100.00	S45.00°E	1308	100.00	S45.00°E	1308
C309	100.00	S45.00°E	1309	100.00	S45.00°E	1309
C310	100.00	S45.00°E	1310	100.00	S45.00°E	1310
C311	100.00	S45.00°E	1311	100.00	S45.00°E	1311
C312	100.00	S45.00°E	1312	100.00	S45.00°E	1312
C313	100.00	S45.00°E	1313	100.00	S45.00°E	1313
C314	100.00	S45.00°E	1314	100.00	S45.00°E	1314
C315	100.00	S45.00°E	1315	100.00	S45.00°E	1315
C316	100.00	S45.00°E	1316	100.00	S45.00°E	1316
C317	100.00	S45.00°E	1317	100.00	S45.00°E	1317
C318	100.00	S45.00°E	1318	100.00	S45.00°E	1318
C319	100.00	S45.00°E	1319	100.00	S45.00°E	1319
C320	100.00	S45.00°E	1320	100.00	S45.00°E	1320
C321	100.00	S45.00°E	1321	100.00	S45.00°E	1321
C322	100.00	S45.00°E	1322	100.00	S45.00°E	1322
C323	100.00	S45.00°E	1323	100.00	S45.00°E	1323
C324	100.00	S45.00°E	1324	100.00	S45.00°E	1324
C325	100.00	S45.00°E	1325	100.00	S45.00°E	1325
C326	100.00	S45.00°E	1326	100.00	S45.00°E	1326
C327	100.00	S45.00°E	1327	100.00	S45.00°E	1327
C328	100.00	S45.00°E	1328	100.00	S45.00°E	1328
C329	100.00	S45.00°E	1329	100.00	S45.00°E	1329
C330	100.00	S45.00°E	1330	100.00	S45.00°E	1330
C331	100.00	S45.00°E	1331	100.00	S45.00°E	1331
C332	100.00	S45.00°E	1332	100.00	S45.00°E	1332
C333	100.00	S45.00°E	1333	100.00	S45.00°E	1333
C334	100.00	S45.00°E	1334	100.00	S45.00°E	1334
C335	100.00	S45.00°E	1335			