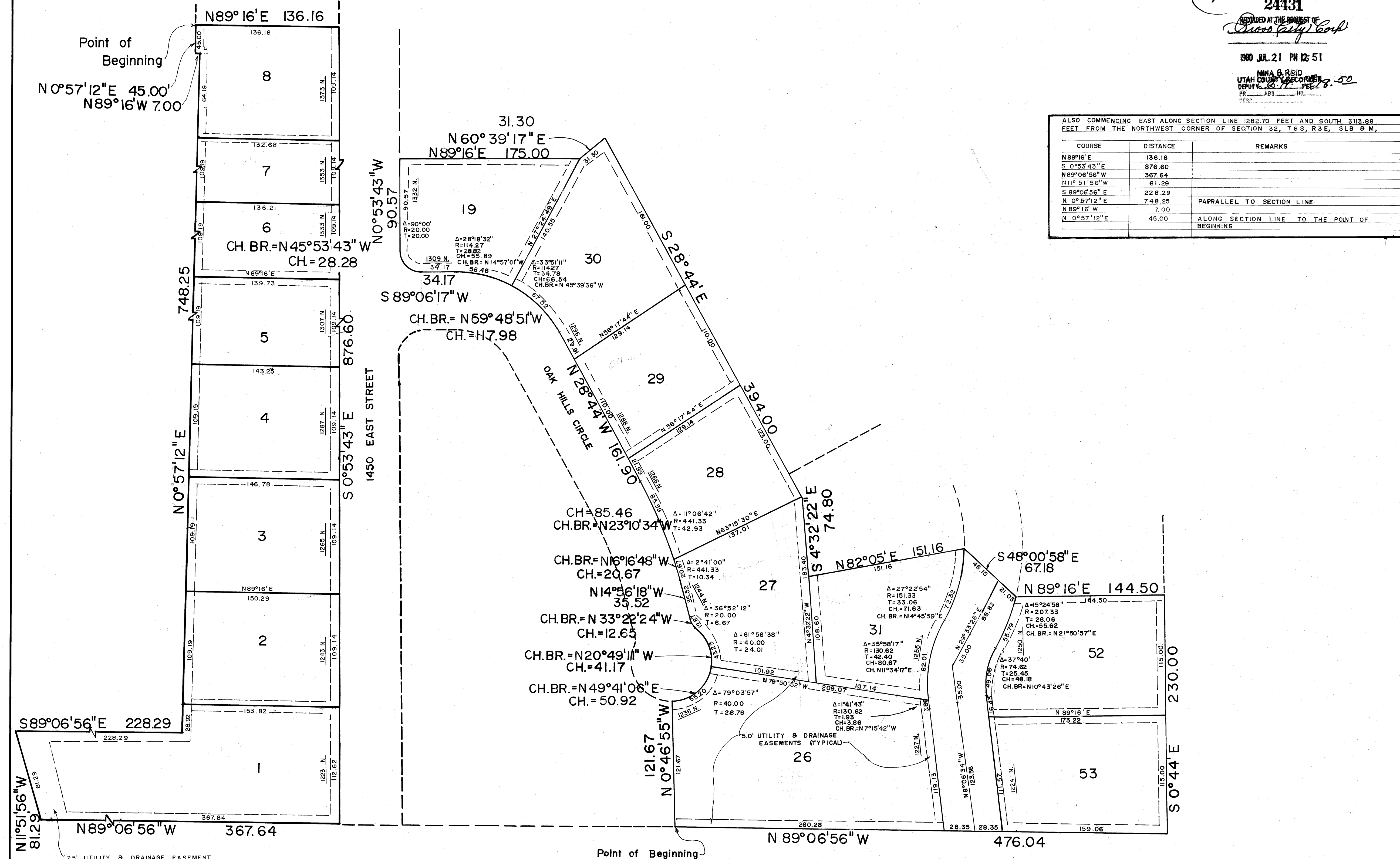


Map Filing # 2565
24431

REQUIRED BY THE BOARD OF
David J. Zibbe
1980 JUL 21 PM 12:51
MNA & REID
UTAH COUNTY RECORDER
DEPT. 1-10-77
PR. 488-110

ALSO COMMENCING EAST ALONG SECTION LINE 1282.70 FEET AND SOUTH 213.88 FEET FROM THE NORTHWEST CORNER OF SECTION 32, T6S, R3E, S1B & M,

COURSE	DISTANCE	REMARKS
N 89°16' E	136.16	
S 0°53'43" W	876.60	
N 89°06'56" E	367.64	
N 11°51'56" W	81.29	
S 89°06'56" E	228.29	PAPRALLEL TO SECTION LINE
N 0°57'12" E	7.00	
N 89°16' W	45.00	ALONG SECTION LINE TO THE POINT OF BEGINNING



SURVEYOR'S CERTIFICATE
I, D. ECCLES CAMERON, DO HEREBY CERTIFY THAT I AM A REGISTERED LAND SURVEYOR, AND THAT I HOLD CERTIFICATE NO. 1133, AS PRESCRIBED UNDER THE LAWS OF THE STATE OF UTAH. I FURTHER CERTIFY BY AUTHORITY OF THE OWNERS, I HAVE MADE A SURVEY OF THE TRACT OF LAND SHOWN ON THIS PLAT AND DESCRIBED BELOW, AND HAVE SUBDIVIDED SAID TRACT OF LAND INTO LOTS, BLOCKS, STREETS, AND EASEMENTS AND THE SAME HAS BEEN CORRECTLY SURVEYED AND STAKED ON THE GROUND AS SHOWN ON THIS PLAT AND THAT THIS PLAT IS TRUE AND CORRECT.

BOUNDARY DESCRIPTION
COMMENCING EAST ALONG SECTION LINE 1282.70 FEET AND SOUTH 213.88 FEET FROM THE NORTHWEST CORNER OF SECTION 32, TOWNSHIP 6 SOUTH, RANGE 3 EAST, SALT LAKE BASE & MERIDIAN; THENCE AS FOLLOWS:

COURSE	DISTANCE	REMARKS
N 0°46'55" W	121.67	
NE'LY	55.20	ALONG A CURVE TO THE LEFT, CH. BR. = N 49°41'06" E, CH. DIST. = 50.92
NW'LY	43.25	" " " " LEFT, CH. BR. = N 20°49'11" W, CH. DIST. = 41.17
NW'LY	12.87	" " " " RIGHT, CH. BR. = N 33°22'24" W, CH. DIST. = 12.65
N 14°56'18" W	35.52	" " " " LEFT, CH. BR. = N 16°16'48" W, CH. DIST. = 20.67
NW'LY	20.67	" " " " LEFT, CH. BR. = N 23°10'34" W, CH. DIST. = 85.46
NW'LY	85.59	" " " " LEFT, CH. BR. = N 23°10'34" W, CH. DIST. = 85.46
N 28°44' E	161.90	" " " " LEFT, CH. BR. = N 89°48'51" W, CH. DIST. = 117.98
NW'LY	123.98	" " " " LEFT, CH. BR. = N 89°48'51" W, CH. DIST. = 117.98
S 89°06'17" W	54.17	" " " " LEFT, CH. BR. = N 45°53'43" W, CH. DIST. = 28.28
NW'LY	31.42	" " " " RIGHT, CH. BR. = N 45°53'43" W, CH. DIST. = 28.28
N 0°57'12" W	90.57	THENCE N 89°16' E 175.00
N 60°39'17" E	31.30	
S 28°44' E	31.30	
S 4°32'22" E	394.00	
S 82°00'58" E	74.80	
N 82°05' E	151.16	
S 48°00'58" E	67.18	
N 89°16' E	144.50	
S 0°44' E	230.00	
N 89°06'56" W	476.04	TO POINT OF BEGINNING 3,874 ACRES

DATE: 12-13-77
SURVEYOR: *D. Eccles Cameron*
OWNERS' DEDICATION: KNOW ALL MEN BY THESE PRESENTS THAT WE, ALL OF THE UNDERSIGNED OWNERS OF ALL OF THE PROPERTY DESCRIBED IN THE SURVEYOR'S CERTIFICATE HEREON AND SHOWN ON THIS MAP, HAVE CAUSED THE SAME TO BE SUBDIVIDED INTO LOTS, BLOCKS, STREETS AND EASEMENTS AND DO HEREBY DEDICATE THE STREETS AND OTHER PUBLIC AREAS AS INDICATED HEREON FOR PERPETUAL USE OF THE PUBLIC.
IN WITNESS WHEREOF WE HAVE HEREUNTO SET OUR HANDS THIS 5TH DAY OF DECEMBER, A.D. 1977.
STATE OF UTAH } S.S.
COUNTY OF UTAH }
ON THE 5th DAY OF DECEMBER, A.D. 1977, PERSONALLY APPEARED BEFORE ME THE SIGNERS OF THE FOREGOING DEDICATION WHO DULY ACKNOWLEDGE TO ME THAT THEY DID EXECUTE THE SAME.
MY COMMISSION EXPIRES 2-2-80.
ACKNOWLEDGEMENT
STATE OF UTAH } S.S.
COUNTY OF UTAH }
ACCEPANCE BY LEGISLATIVE BODY
THE CITY COMMISSION OF PROVO, COUNTY OF UTAH, APPROVES THIS SUBDIVISION AND HEREBY ACCEPTS THE DEDICATION OF ALL STREETS, EASEMENTS, AND OTHER PARCELS OF LAND INTENDED FOR PUBLIC PURPOSES FOR THE PERPETUAL USE OF THE PUBLIC THIS 13TH DAY OF MARCH, A.D. 1978.
PLANNING COMMISSION APPROVAL
APPROVED THIS 13TH DAY OF OCTOBER, A.D. 1976, BY THE PLANNING COMMISSION.
PLAT "L"
PARTIAL
REVISION OF LOTS 26, 27, 28,
29, 30, 31, 52, & 53 & 19
Also LOTS 1-8
OAK HILLS
SUBDIVISION
PROVO, UTAH COUNTY, UTAH
SCALE: 1" = 50 FEET
SURVEYOR'S SEAL, NOTARY PUBLIC SEAL, CITY-COUNTY ENGINEER SEAL, CLERK-RECORDER SEAL.

2565-20