

Summit Vista Subdivision No. 2

Amending Lots 2, 3 & 4 of Summit Vista Subdivision
 A part of the Southwest Quarter and the Southeast Quarter of Section 17, T2S, R1W, SLB&M, U.S. Survey
 Taylorsville City, Salt Lake County, Utah
 March 2020

TAYLORSVILLE CITY PLANNING COMMISSION

Approved by the Taylorsville City Planning Commission
 this 30th day of May, 2020.

Michael J. McElroy
 Chairman

TAYLORSVILLE CITY ATTORNEY

Approved by the Taylorsville City Attorney
 this 30th day of May, 2020.

Gregory J. ...
 Signature

TAYLORSVILLE CITY ENGINEER

I hereby certify that this office has
 examined this plan and it is correct in
 accordance with the provisions of Taylorsville
 City Code.

Jim White
 Signature

DATED: 24th OF APRIL 2020

BOARD OF HEALTH

Approved this 21st day of April, 2020.

John ...
 Salt Lake County Board of Health

TAYLORSVILLE CITY APPROVAL

Presented to the Taylorsville City Mayor this 29th
 day of April, 2020, and was approved and accepted by the PLANNING
 Commission of Taylorsville City, Utah this 14th day
 of APRIL, 2020.

Title: City Recorder
 Attest: *Samuel ...*
 Mayor



TAYLORSVILLE-BENNION IMPROVEMENT DISTRICT

Approved by Taylorsville-Bennion Improvement
 District, this 24th day of April, 2020.

Jimmy Douthett
 Signature

TAYLORSVILLE CITY COMMUNITY DEVELOPMENT

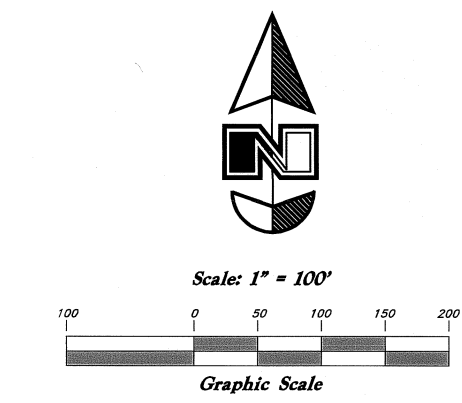
I hereby certify that this office has examined this plan
 and it is correct in accordance with the information on file
 in this office.

Signed this 27th day of April, 2020.

Wayne ...
 Director I

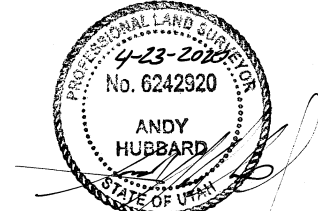
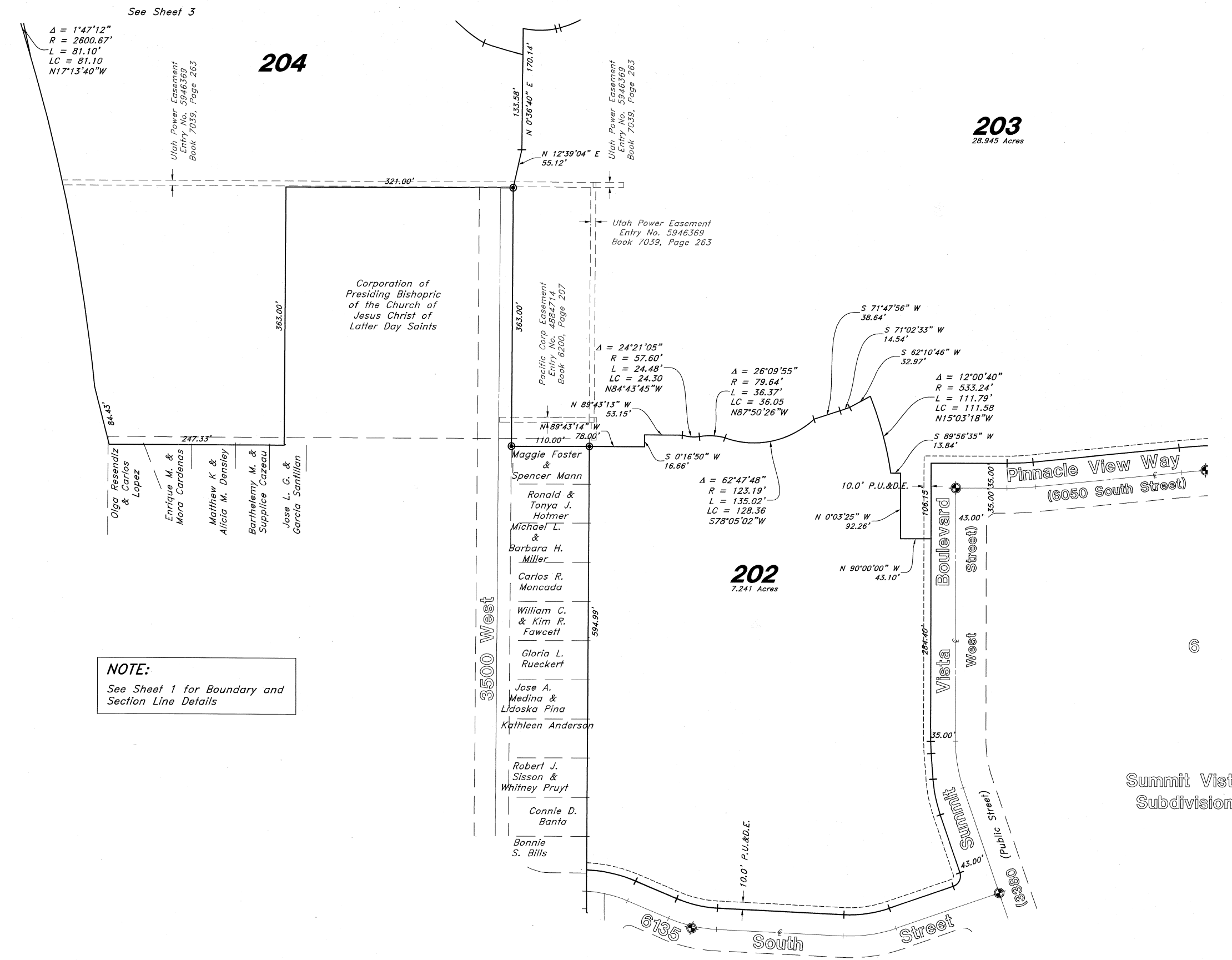


5746 SOUTH 1475 EAST OGDEN, UTAH 84403
 MAIN (801)394-4515 S.L.C (801)521-0222 FAX (801)392-7544
 WWW.GREATBASINENGINEERING.COM



- Legend**
- ▲ Set Nail & Washer
 - Set Hub & Tack
 - ⊙ Monument to be set
 - ⊙ Radial Line
 - (Red.) Radial Line
 - (N/R) Non-Radial Line
 - (S.L.C.S.) Salt Lake County Surveyor
 - P.U.&D.E. Public Utility & Drainage Easement
 - ABP Area Reference Plot
 - Set/Found 5/8" x 24" Long Rebar & GBE Cap w/ Lathe

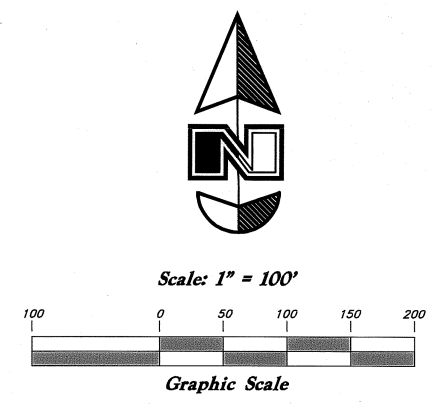
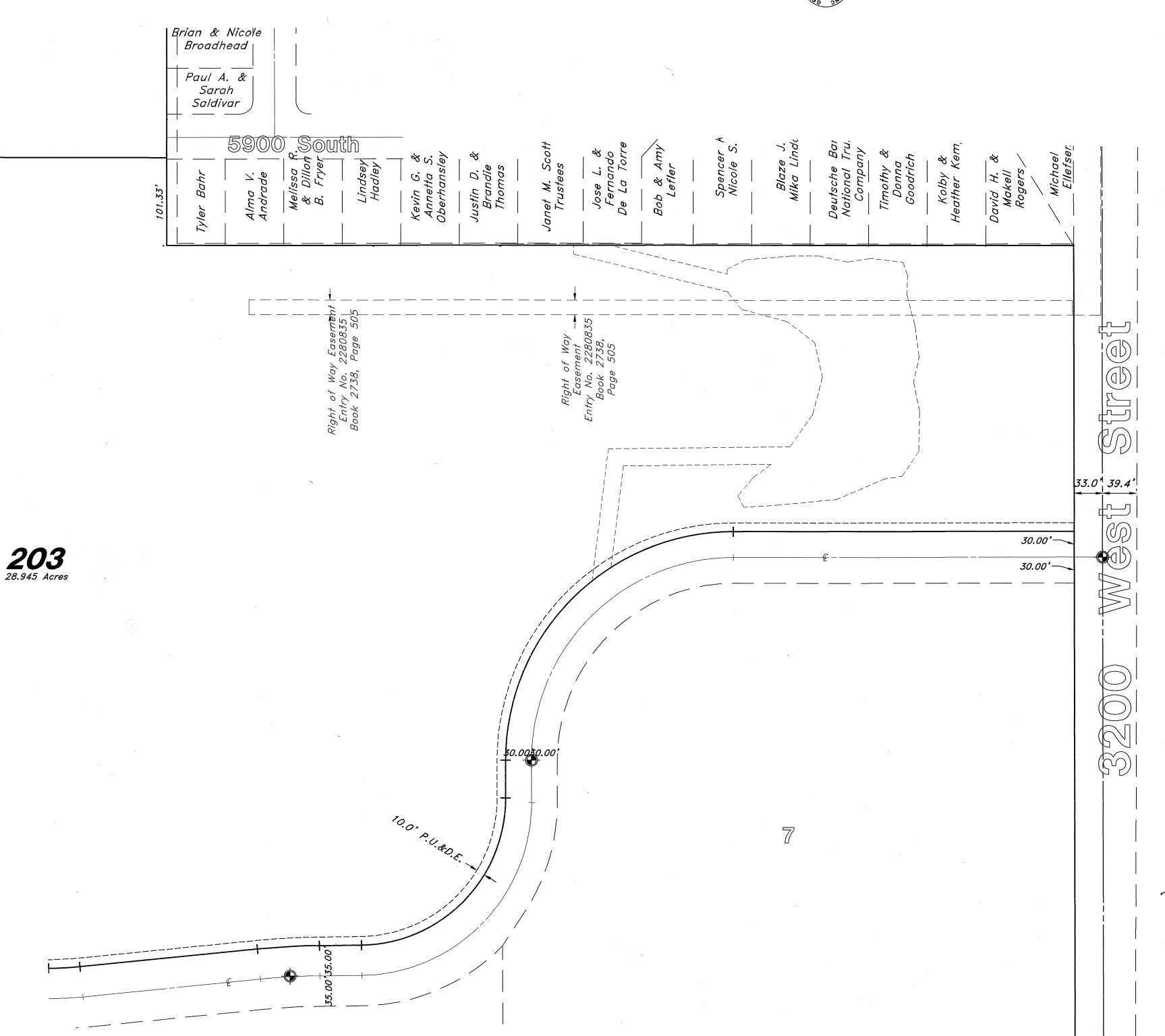
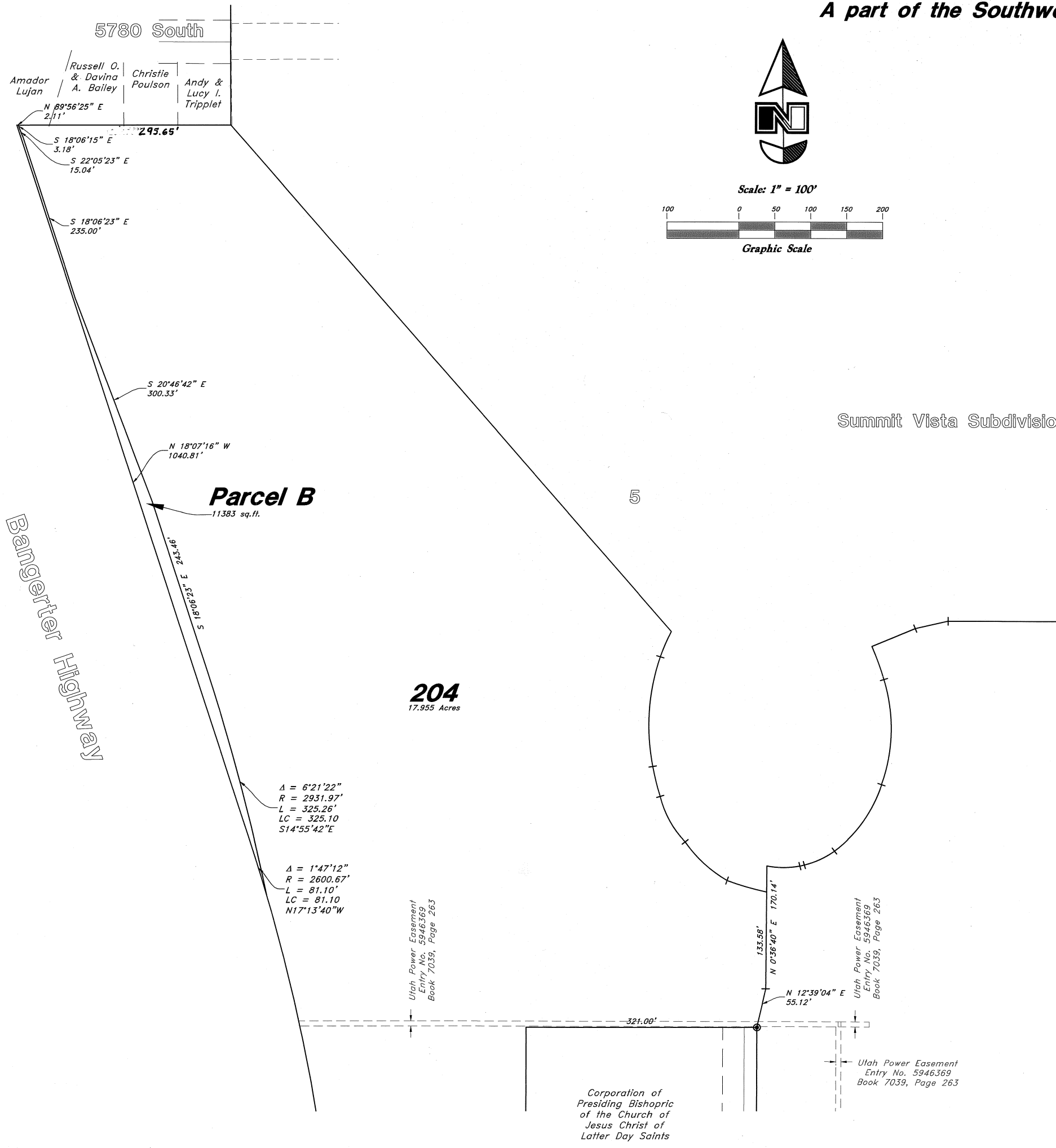
- NOTE:**
1. 10' wide Public Utility and Drainage Easements (P.U.&D.E.) as indicated by dashed lines, except as otherwise shown.
 2. Lots 202-204 are subject to a blanket Public Utility Easement in open areas not required for the development of future buildings on the parcels.
 3. No city maintenance will be provided for private roadways.



Sheet 2 of 3
SALT LAKE COUNTY RECORDER
 ENTRY NO. 18264352 FEE PAID
 \$115.00 FILED FOR RECORD AND
 RECORDED 05/04/2020 AT
 4:02 PM IN BOOK 2000 OF OFFICIAL
 RECORDS, PAGE 104 RECORDED
 FOR Summit Vista Subdivision
 SALT LAKE COUNTY RECORDER
 BY: *Don ...* Deputy

Summit Vista Subdivision No. 2

Amending Lots 2, 3 & 4 of Summit Vista Subdivision
 A part of the Southwest Quarter and the Southeast Quarter of Section 17, T2S, R1W, SLB&M, U.S. Survey
 Taylorsville City, Salt Lake County, Utah
 March 2020



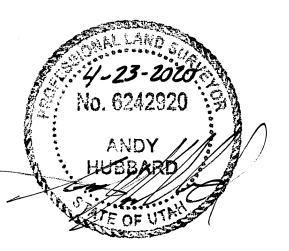
NOTE:
 See Sheet 1 for Boundary and Section Line Details

- Legend**
- ▲ Set Nail & Washer
 - Set Hub & Tack
 - Monument to be set
 - (Rad.) Radial Line
 - (N/P) Non-Radial Line
 - (S.L.C.S.) Salt Lake County Surveyor
 - P.U.D.E. Public Utility & Drainage Easement
 - ARP Area Reference Point
 - Self/Found 5/8" x 3/4" Long Rebar & CBE Cap w/ Lathe

- NOTE:**
1. 10' wide Public Utility and Drainage Easements (P.U.&D.E.) as indicated by dashed lines, except as otherwise shown.
 2. Lots 202-204 are subject to a blanket Public Utility Easement in open areas not required for the Development of future buildings on the parcels.
 3. No city maintenance will be provided for private roadways.

GREAT BASIN ENGINEERING

5746 SOUTH 1475 EAST OGDEN, UTAH 84403
 MAIN (801)394-4515 S.L.C. (801)521-0222 FAX (801)392-7544
 WWW.GREATBASINENGINEERING.COM



Sheet 3 of 3

SALT LAKE COUNTY RECORDER

ENTRY NO. 13264352 - FEE PAID
 1530 FILED FOR RECORD AND
 RECORDED 05/16/2020 AT
 4:42 PM IN BOOK 2020 OF OFFICIAL
 RECORDS PAGE 101 RECORDED
 FOR Summit Lifeplan Communities

SALT LAKE COUNTY RECORDER
 BY: *Andy Hubbard* DEPUTY