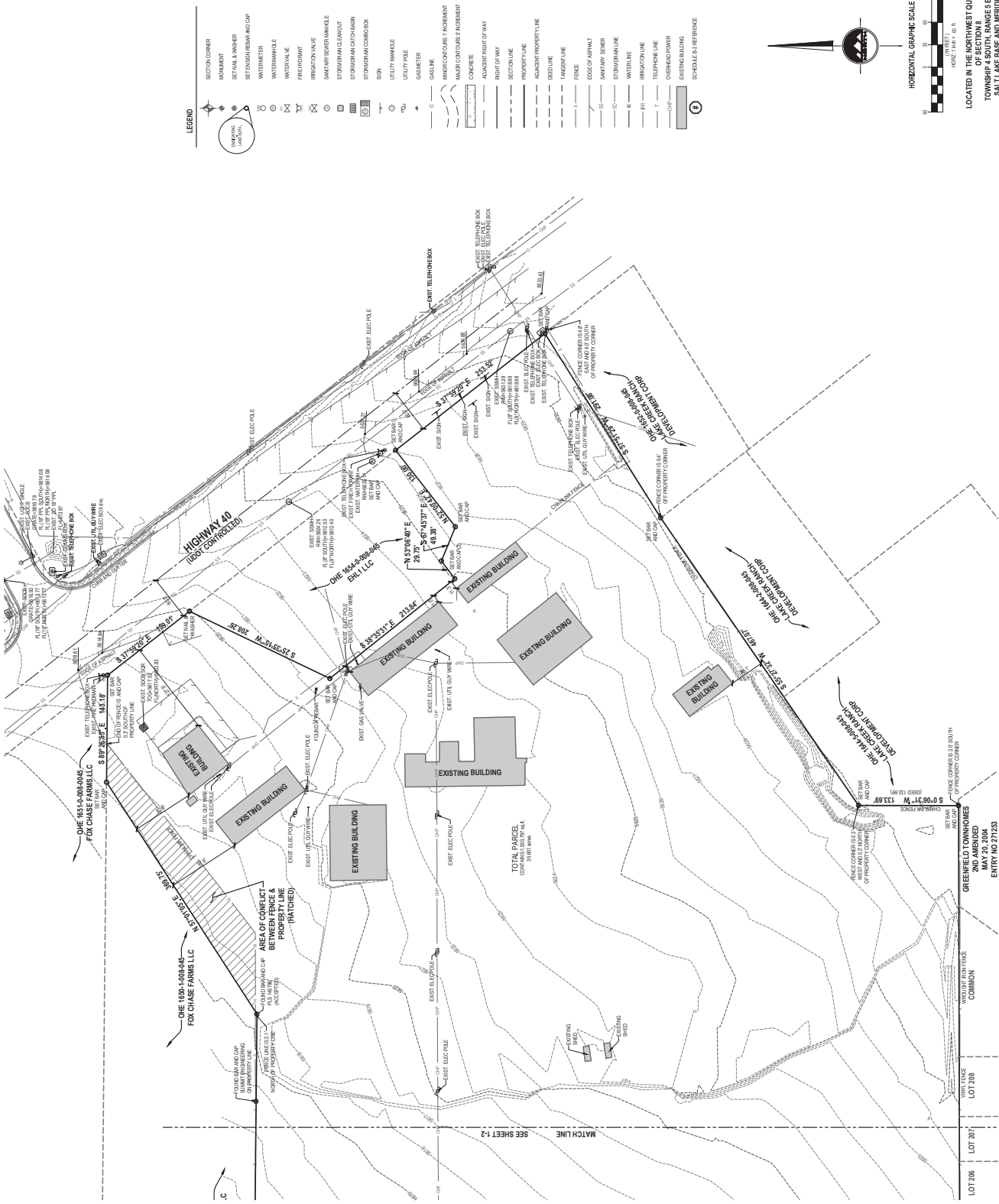




CALL US TODAY
 811 AT LEAST 48 HOURS
 BEFORE ANY EXCAVATION OR
 CONSTRUCTION OF ANY
 KIND.

Professional Engineering
 & Surveying



EN SIGN
 THE STANDARD IN ENGINEERING

SALT LAKE CITY
 45 W. 1000 S. SHARPS
 SUITE 900, U.T. 84143-2929
 Phone: 801.452.2929

LAYTON
 Phone: 801.547.1100

TOOELE
 Phone: 435.384.3360

CEDAR CITY
 Phone: 435.861.4533

HIGHTOWER
 Phone: 435.866.2983

WWW.ENSIGNENG.COM

2760 EAST BROADWAY, SUITE 318
 HIGHTOWER, UTAH 84111
 712.858.6242
 712.858.6243

**TURNER MILL MIXED USED
 ALTA-NSPS LAND TITLE & TOPOGRAPHY SURVEY**

1550 SOUTH HIGHWAY 40
 HEBER, UTAH



**ALTA-NSPS
 LAND TITLE &
 TOPOGRAPHY
 SURVEY**

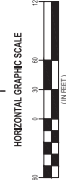
DATE: 05/20/2009
 TIME: 10:45 AM
 PROJECT: TURNER MILL
 COUNTY: GARFIELD
 PARCELS: 206, 207, 208

2 OF 2

LOCATED IN THE NORTHWEST QUARTER
 OF SECTION 13, T42N, R89E, S34E
 TOWNSHIP 42 NORTH, RANGE 89 EAST,
 SALT LAKE BASE AND MERIDIAN
 HEBER, WASATCH COUNTY, UTAH

LEGEND

(Symbol)	SECTION CORNER
(Symbol)	SETBACK MARKER
(Symbol)	BENCH MARK
(Symbol)	SET ENHANCEMENT
(Symbol)	WATERMETER
(Symbol)	WATERWHALE
(Symbol)	WATERHOLE
(Symbol)	FRESHWATER
(Symbol)	IRRIGATION VALVE
(Symbol)	SAW PUMP/SEWER WHALE
(Symbol)	STORM DRAIN MANHOLE
(Symbol)	STORM DRAIN GATE/SLAM
(Symbol)	STORM DRAIN CONNECTION
(Symbol)	SPRING
(Symbol)	UTILITY MANHOLE
(Symbol)	UTILITY POLE
(Symbol)	GABRIEL
(Symbol)	GAZELINE
(Symbol)	MINOR CONTOUR & INCREMENT
(Symbol)	MAJOR CONTOUR & INCREMENT
(Symbol)	CONCRETE
(Symbol)	ADJUSTED RIGHT OF WAY
(Symbol)	RIGHT OF WAY
(Symbol)	SECTION LINE
(Symbol)	PROPERTY LINE
(Symbol)	ADJACENT PROPERTY LINE
(Symbol)	DEED LINE
(Symbol)	TYPICAL LINE
(Symbol)	FENCE
(Symbol)	EDGE OF ASPHALT
(Symbol)	SAW PUMP/SEWER
(Symbol)	STORM DRAIN LINE
(Symbol)	WATERLINE
(Symbol)	IRRIGATION LINE
(Symbol)	TELEPHONE LINE
(Symbol)	OVERHEAD POWER
(Symbol)	EXISTING BUILDING
(Symbol)	SCALE 6 IN = 10 FEET



SECTION 13
 T42N, R89E, S34E
 FOX CHASE FARMS LLC
 ONE 1651-008-0405
 S 89°24'52" E 148.18'
 ONE 1651-008-0406
 S 89°24'52" E 148.18'
 ONE 1651-008-0407
 S 89°24'52" E 148.18'
 ONE 1651-008-0408
 S 89°24'52" E 148.18'
 ONE 1651-008-0409
 S 89°24'52" E 148.18'
 ONE 1651-008-0410
 S 89°24'52" E 148.18'
 ONE 1651-008-0411
 S 89°24'52" E 148.18'
 ONE 1651-008-0412
 S 89°24'52" E 148.18'
 ONE 1651-008-0413
 S 89°24'52" E 148.18'
 ONE 1651-008-0414
 S 89°24'52" E 148.18'
 ONE 1651-008-0415
 S 89°24'52" E 148.18'
 ONE 1651-008-0416
 S 89°24'52" E 148.18'
 ONE 1651-008-0417
 S 89°24'52" E 148.18'
 ONE 1651-008-0418
 S 89°24'52" E 148.18'
 ONE 1651-008-0419
 S 89°24'52" E 148.18'
 ONE 1651-008-0420
 S 89°24'52" E 148.18'