

NOTE: Drawing represents Building B. Building A is a mirror image of this drawing. Front of building is bottom of drawing.

This map is provided solely for the purpose of assisting in locating the property and Cottonwood Title Insurance Agency, Inc. assumes no liability for variation, if any, with any actual survey.

- LEGEND:**
- POINT FOOT SURVEY
 - SET 1/8" BEHIND AND PLASTIC CAP STAMPED REF #04661 (UNLESS OTHERWISE NOTED)
 - FOUND MONUMENTATION AS SHOWN AND DESCRIBED
 - ➔ SET STANDARD HURRICANE CITY MONUMENT - CLASS II SUBSTITUTION CORNER
 - ➔ SET 1/8" BEHIND AND PLASTIC CAP STAMPED REF #04661 (UNLESS OTHERWISE NOTED)
 - IDENTICAL POINTS ABOVE AND/OR BELOW
 - ▨ LIMITED COMMON AREA
 - ▨ PRIVATE OWNERSHIP
 - ▨ COMMON AREA
 - ▨ ASPHALT-COMMON AREA
 - ▨ SUBWALK-COMMON AREA

NOTES
 Limited common areas include the underground parking spaces and the common areas of the building. The limited common areas also include, but are not limited to, any shutters, awnings, window boxes, downspouts, porches, or other apparatus or area intended to serve a particular unit, but located outside the boundaries of the unit.



This map is provided solely for the purpose of assisting in locating the property and Cottonwood Title Insurance Agency, Inc. assumes no liability for variation, if any, with any actual survey.

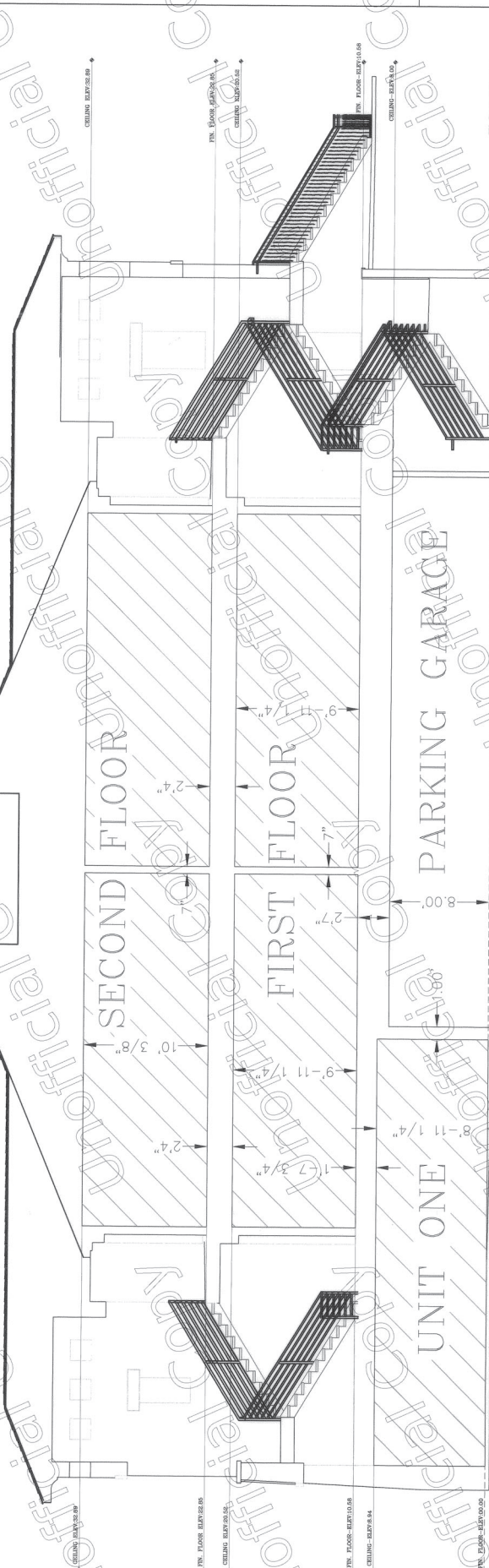
ALLIANCE CONSULTING
A Planning and Engineering Firm



FINAL PLAT - CROSS SECTION
FOR
CORRAL SPRINGS CONDOMINIUMS PHASE 1
LOCATED IN
SEC. 4, TOWNSHIP 42 SOUTH, RANGE 14 WEST, S.18.E.1
CITY OF HORRANNE, WASH. CO., UTAH

SHEET
4
OF 4 SHEETS

DATE:	8-12-16
DRAWN BY:	CAJ
CHECKED BY:	MB
SCALE:	1" = 5'
PROJECT:	COND0-PLAT.dwg
REV. NO.	4151-05
DATE:	8-09-09
BY:	
DATE:	



- LEGEND:**
- POINT NOT SET
 - SET 6" REBAR AND PLASTIC CAP STAMPED (UNLESS OTHERWISE NOTED)
 - SET 4" REBAR AND PLASTIC CAP STAMPED (UNLESS OTHERWISE NOTED)
 - ◆ SET STANDARD HURRICANE CITY MONUMENT - CLASS II
 - ▲ SUBDIVISION CORNER
 - ▲ SET 6" REBAR AND PLASTIC CAP STAMPED (UNLESS OTHERWISE NOTED)
 - ▲ SET 4" REBAR AND PLASTIC CAP STAMPED (UNLESS OTHERWISE NOTED)
 - ◆ IDENTICAL POINTS - ABOVE AND/OR BELOW
 - ▨ LIMITED COMMON AREA
 - ▩ PRIVATE OWNERSHIP
 - ▧ COMMON AREA
 - ▦ ASPHALT-COMMON-AREA
 - ▤ SIDEWALK-COMMON AREA

NOTES:

Limited common areas include the underground parking spaces designed or used by Unit Owners in a particular Building or portion thereof. Limited common areas also include, but are not limited to, any shutters, awnings, window boxes, downspouts, porches, or other apparatus or area intended to serve a particular unit, but located outside the boundaries of the Unit.

