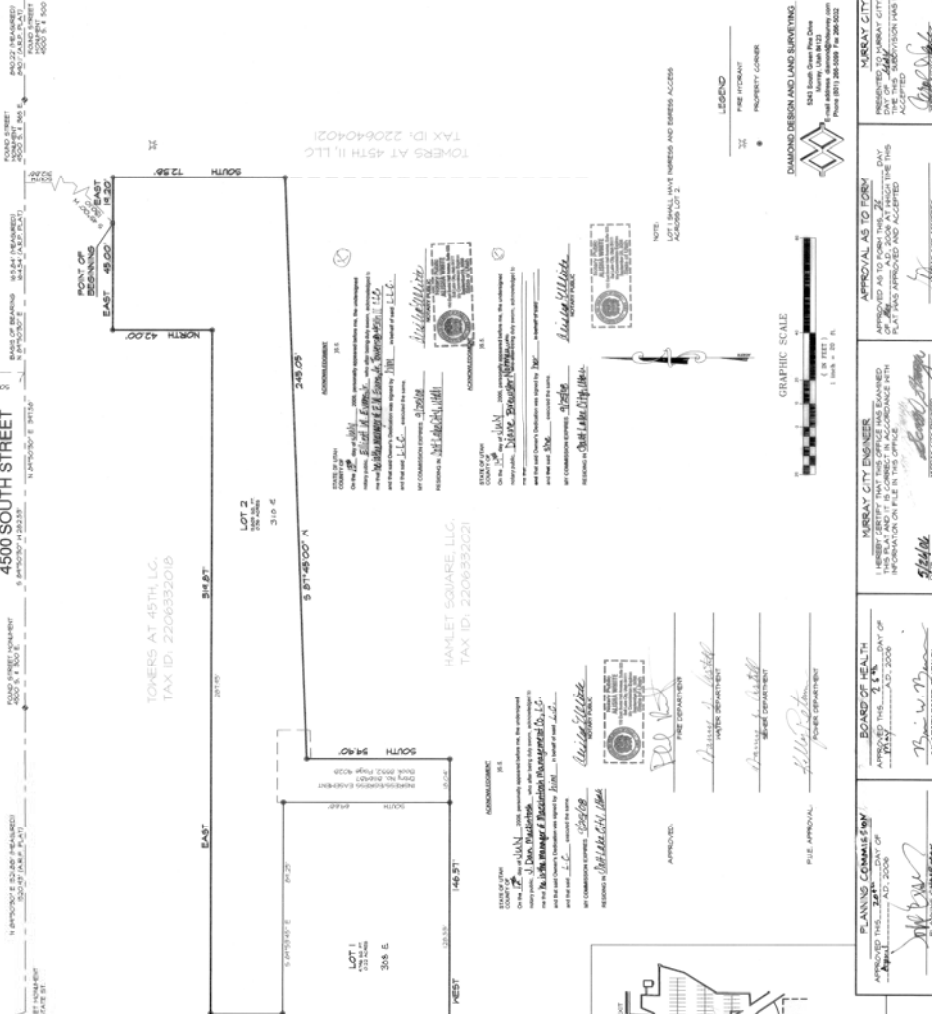


# TOWERS AT 4500 SOUTH SUBDIVISION

LOCATED IN THE SOUTHWEST QUARTER  
OF SECTION 6, TOWNSHIP 2 SOUTH, RANGE 1 EAST,  
SALT LAKE BASE & MERIDIAN

This map is provided solely for the purposes of  
assisting in locating the property and Cottonwood  
Title Insurance Agency, Inc. assumes no liability  
for variation, if any, with any actual survey.



### PLANNING COMMISSION

APPROVED THIS 14th DAY OF JULY, 2009  
BY: *[Signature]*  
PLANNING COMMISSION

### BOARD OF HEALTH

APPROVED THIS 14th DAY OF JULY, 2009  
BY: *[Signature]*  
BOARD OF HEALTH

### FILE APPROVAL

APPROVED THIS 14th DAY OF JULY, 2009  
BY: *[Signature]*  
FILE APPROVAL

### OVERALL PLAN VIEW

### ACKNOWLEDGMENT

STATE OF UTAH  
COUNTY OF SALT LAKE  
I, the undersigned, Clerk of the County, do hereby certify that the foregoing plat was duly filed for record in my office on this 14th day of July, 2009, at 10:58 AM, and that the same is a true and correct copy of the original as the same appears on the books and records of said County.

### ACKNOWLEDGMENT

STATE OF UTAH  
COUNTY OF SALT LAKE  
I, the undersigned, Clerk of the County, do hereby certify that the foregoing plat was duly filed for record in my office on this 14th day of July, 2009, at 10:58 AM, and that the same is a true and correct copy of the original as the same appears on the books and records of said County.

### ACKNOWLEDGMENT

STATE OF UTAH  
COUNTY OF SALT LAKE  
I, the undersigned, Clerk of the County, do hereby certify that the foregoing plat was duly filed for record in my office on this 14th day of July, 2009, at 10:58 AM, and that the same is a true and correct copy of the original as the same appears on the books and records of said County.

### ACKNOWLEDGMENT

STATE OF UTAH  
COUNTY OF SALT LAKE  
I, the undersigned, Clerk of the County, do hereby certify that the foregoing plat was duly filed for record in my office on this 14th day of July, 2009, at 10:58 AM, and that the same is a true and correct copy of the original as the same appears on the books and records of said County.

### ACKNOWLEDGMENT

STATE OF UTAH  
COUNTY OF SALT LAKE  
I, the undersigned, Clerk of the County, do hereby certify that the foregoing plat was duly filed for record in my office on this 14th day of July, 2009, at 10:58 AM, and that the same is a true and correct copy of the original as the same appears on the books and records of said County.

### ACKNOWLEDGMENT

STATE OF UTAH  
COUNTY OF SALT LAKE  
I, the undersigned, Clerk of the County, do hereby certify that the foregoing plat was duly filed for record in my office on this 14th day of July, 2009, at 10:58 AM, and that the same is a true and correct copy of the original as the same appears on the books and records of said County.

### ACKNOWLEDGMENT

STATE OF UTAH  
COUNTY OF SALT LAKE  
I, the undersigned, Clerk of the County, do hereby certify that the foregoing plat was duly filed for record in my office on this 14th day of July, 2009, at 10:58 AM, and that the same is a true and correct copy of the original as the same appears on the books and records of said County.

### ACKNOWLEDGMENT

STATE OF UTAH  
COUNTY OF SALT LAKE  
I, the undersigned, Clerk of the County, do hereby certify that the foregoing plat was duly filed for record in my office on this 14th day of July, 2009, at 10:58 AM, and that the same is a true and correct copy of the original as the same appears on the books and records of said County.

### ACKNOWLEDGMENT

STATE OF UTAH  
COUNTY OF SALT LAKE  
I, the undersigned, Clerk of the County, do hereby certify that the foregoing plat was duly filed for record in my office on this 14th day of July, 2009, at 10:58 AM, and that the same is a true and correct copy of the original as the same appears on the books and records of said County.

### ACKNOWLEDGMENT

STATE OF UTAH  
COUNTY OF SALT LAKE  
I, the undersigned, Clerk of the County, do hereby certify that the foregoing plat was duly filed for record in my office on this 14th day of July, 2009, at 10:58 AM, and that the same is a true and correct copy of the original as the same appears on the books and records of said County.

### ACKNOWLEDGMENT

STATE OF UTAH  
COUNTY OF SALT LAKE  
I, the undersigned, Clerk of the County, do hereby certify that the foregoing plat was duly filed for record in my office on this 14th day of July, 2009, at 10:58 AM, and that the same is a true and correct copy of the original as the same appears on the books and records of said County.

### ACKNOWLEDGMENT

STATE OF UTAH  
COUNTY OF SALT LAKE  
I, the undersigned, Clerk of the County, do hereby certify that the foregoing plat was duly filed for record in my office on this 14th day of July, 2009, at 10:58 AM, and that the same is a true and correct copy of the original as the same appears on the books and records of said County.

### ACKNOWLEDGMENT

STATE OF UTAH  
COUNTY OF SALT LAKE  
I, the undersigned, Clerk of the County, do hereby certify that the foregoing plat was duly filed for record in my office on this 14th day of July, 2009, at 10:58 AM, and that the same is a true and correct copy of the original as the same appears on the books and records of said County.

### ACKNOWLEDGMENT

STATE OF UTAH  
COUNTY OF SALT LAKE  
I, the undersigned, Clerk of the County, do hereby certify that the foregoing plat was duly filed for record in my office on this 14th day of July, 2009, at 10:58 AM, and that the same is a true and correct copy of the original as the same appears on the books and records of said County.

### ACKNOWLEDGMENT

STATE OF UTAH  
COUNTY OF SALT LAKE  
I, the undersigned, Clerk of the County, do hereby certify that the foregoing plat was duly filed for record in my office on this 14th day of July, 2009, at 10:58 AM, and that the same is a true and correct copy of the original as the same appears on the books and records of said County.

### ACKNOWLEDGMENT

STATE OF UTAH  
COUNTY OF SALT LAKE  
I, the undersigned, Clerk of the County, do hereby certify that the foregoing plat was duly filed for record in my office on this 14th day of July, 2009, at 10:58 AM, and that the same is a true and correct copy of the original as the same appears on the books and records of said County.

RECORDED IN 2009 JUL 14 10:58 AM  
SALT LAKE COUNTY CLERK

RECORDED IN 2009 JUL 14 10:58 AM  
SALT LAKE COUNTY CLERK

RECORDED IN 2009 JUL 14 10:58 AM  
SALT LAKE COUNTY CLERK

RECORDED IN 2009 JUL 14 10:58 AM  
SALT LAKE COUNTY CLERK

RECORDED IN 2009 JUL 14 10:58 AM  
SALT LAKE COUNTY CLERK