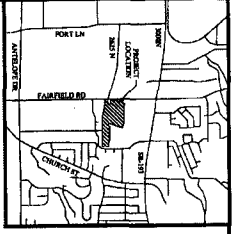


6009-1

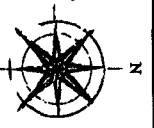
1-9004



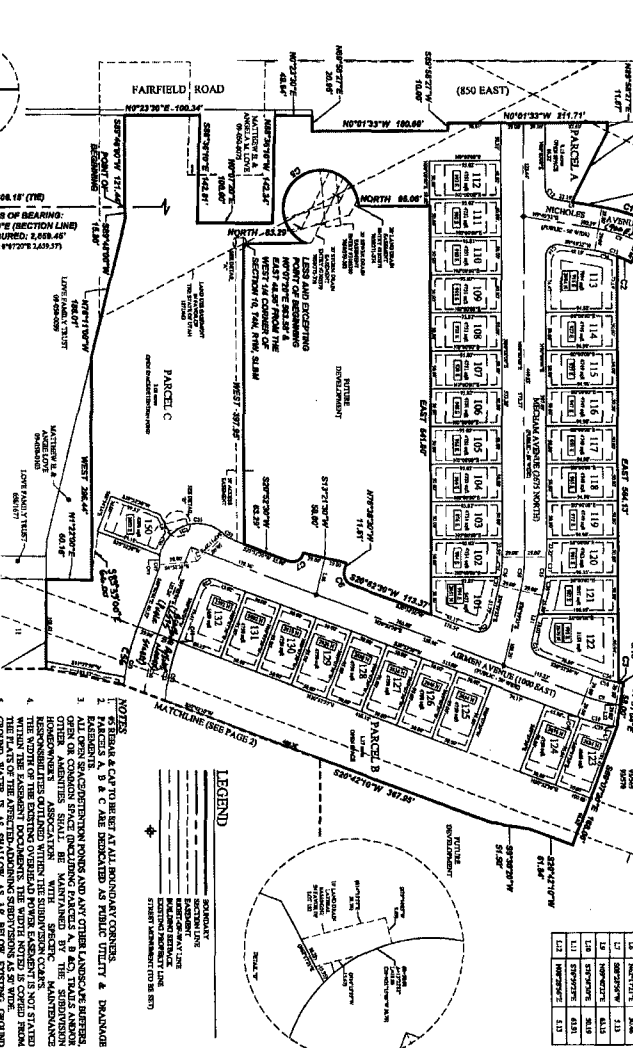
MECHAM MEADOWS PHASE 1

LOCATED IN THE NW/4 OF SECTION 10 AND THE NE/4 OF SECTION 9, 14N, R1W,
SALT LAKE BASE & MERIDIAN
LAYTON CITY, DAVIS COUNTY, UTAH

This map is provided solely for the purpose of assisting in locating the property and Cottonwood Title Insurance Agency, Inc. assumes no liability for variation, if any, with any actual survey.



OWNER	AREA	ACRES	COMBINATION	COORDINATES
C1	230.00	0.00	0.00	44.70
C2	17.00	0.00	0.00	3.67
C3	17.00	0.00	0.00	1.57
C4	20.00	0.00	0.00	4.43
C5	20.00	0.00	0.00	4.43
C6	20.00	0.00	0.00	4.43
C7	20.00	0.00	0.00	4.43
C8	20.00	0.00	0.00	4.43
C9	20.00	0.00	0.00	4.43
C10	20.00	0.00	0.00	4.43
C11	20.00	0.00	0.00	4.43
C12	20.00	0.00	0.00	4.43
C13	20.00	0.00	0.00	4.43
C14	20.00	0.00	0.00	4.43
C15	20.00	0.00	0.00	4.43
C16	20.00	0.00	0.00	4.43
C17	20.00	0.00	0.00	4.43
C18	20.00	0.00	0.00	4.43
C19	20.00	0.00	0.00	4.43
C20	20.00	0.00	0.00	4.43
C21	20.00	0.00	0.00	4.43
C22	20.00	0.00	0.00	4.43
C23	20.00	0.00	0.00	4.43
C24	20.00	0.00	0.00	4.43
C25	20.00	0.00	0.00	4.43
C26	20.00	0.00	0.00	4.43
C27	20.00	0.00	0.00	4.43
C28	20.00	0.00	0.00	4.43
C29	20.00	0.00	0.00	4.43
C30	20.00	0.00	0.00	4.43
C31	20.00	0.00	0.00	4.43
C32	20.00	0.00	0.00	4.43
C33	20.00	0.00	0.00	4.43
C34	20.00	0.00	0.00	4.43
C35	20.00	0.00	0.00	4.43
C36	20.00	0.00	0.00	4.43



OWNER	AREA	ACRES	COMBINATION	COORDINATES
C1	230.00	0.00	0.00	44.70
C2	17.00	0.00	0.00	3.67
C3	17.00	0.00	0.00	1.57
C4	20.00	0.00	0.00	4.43
C5	20.00	0.00	0.00	4.43
C6	20.00	0.00	0.00	4.43
C7	20.00	0.00	0.00	4.43
C8	20.00	0.00	0.00	4.43
C9	20.00	0.00	0.00	4.43
C10	20.00	0.00	0.00	4.43
C11	20.00	0.00	0.00	4.43
C12	20.00	0.00	0.00	4.43
C13	20.00	0.00	0.00	4.43
C14	20.00	0.00	0.00	4.43
C15	20.00	0.00	0.00	4.43
C16	20.00	0.00	0.00	4.43
C17	20.00	0.00	0.00	4.43
C18	20.00	0.00	0.00	4.43
C19	20.00	0.00	0.00	4.43
C20	20.00	0.00	0.00	4.43
C21	20.00	0.00	0.00	4.43
C22	20.00	0.00	0.00	4.43
C23	20.00	0.00	0.00	4.43
C24	20.00	0.00	0.00	4.43
C25	20.00	0.00	0.00	4.43
C26	20.00	0.00	0.00	4.43
C27	20.00	0.00	0.00	4.43
C28	20.00	0.00	0.00	4.43
C29	20.00	0.00	0.00	4.43
C30	20.00	0.00	0.00	4.43
C31	20.00	0.00	0.00	4.43
C32	20.00	0.00	0.00	4.43
C33	20.00	0.00	0.00	4.43
C34	20.00	0.00	0.00	4.43
C35	20.00	0.00	0.00	4.43
C36	20.00	0.00	0.00	4.43

FOCUS
ENGINEERING AND SURVEYING, LLC
23 WEST CENTER STREET
MIDVALE, UTAH 84047 (PH) 333-24073

DATE: 11/6/14
BY: [Signature]

PLANNING COMMISSION
APPROVED AS TO FORM THIS 27th DAY OF NOVEMBER 2014 BY THE LAYTON CITY PLANNING COMMISSION

CITY ENGINEER
APPROVED AS TO FORM THIS 12th DAY OF DECEMBER, A.D. 2014.

CITY ATTORNEY
APPROVED AS TO FORM THIS 12th DAY OF DECEMBER, A.D. 2014.

CITY CLERK
RECORDED TO THE LAYTON CITY CLERK'S OFFICE ON 12/18/14 AT WHICH TIME THIS INSTRUMENT WAS FILED FOR RECORD.

OWNER'S DEDICATION
MECHAM MEADOWS PHASE 1
AND TO HERBY DONATE, GRANT AND CONVEY TO LAYTON CITY, DAVIS COUNTY, UTAH ALL THE RIGHTS AND PORTIONS OF SAID TRACT OF LAND...

RECORDED # 2014-0262
DATE OF UTAH COUNTY RECORDS: 12/18/14
BOOK 2144 PAGE 335