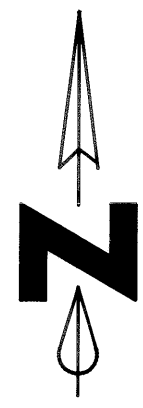
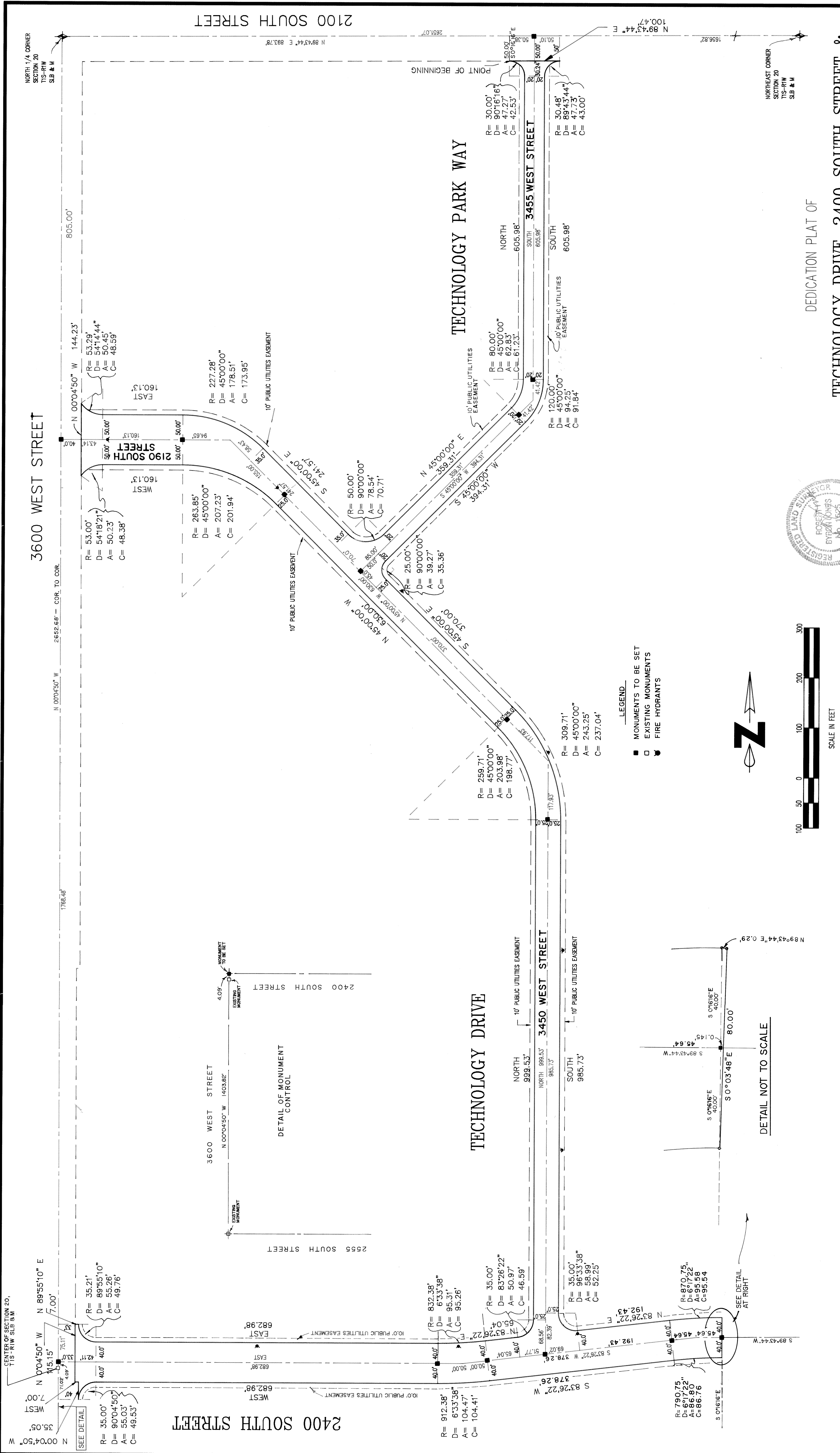
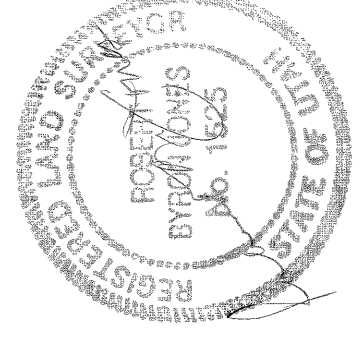


89-5P-45 1 of 2



SCALE IN FEET



DEDICATION PLAT OF

**TECHNOLOGY DRIVE, 2400 SOUTH STREET & TECHNOLOGY PARK WAY**

WEST VALLEY CITY, UTAH

LOCATED IN THE NE 1/4 & SE 1/4 OF SECTION 20, TOWNSHIP 1 SOUTH, RANGE 1 WEST, SALT LAKE BASE AND MERIDIAN.

SHEET 1 OF 2

**BUSH AND GUDGELL, INC.**  
 ENGINEERS, PLANNERS, SURVEYORS  
 535 SOUTH 300 EAST  
 S.L.C. UTAH 84111  
 PHONE (801) 364-1712  
 FAX (801) 364-1988

**PLANNING COMMISSION**  
 APPROVED THIS 17th DAY OF March, A.D., 1989 BY THE WEST VALLEY CITY PLANNING COMMISSION.

*Thomas Deane*  
 MAYOR, WEST VALLEY CITY PLANNING COMMISSION

**GRANGER-HUNTER IMPROVEMENT DISTRICT**  
 APPROVED THIS 1st DAY OF December, A.D., 1988.

*John S. Williams*  
 DISTRICT ENGINEER

**ENGINEER'S CERTIFICATE**  
 I HEREBY CERTIFY THAT THIS OFFICE HAS EXAMINED THIS PLAT AND IT IS CORRECT IN ACCORDANCE WITH INFORMATION ON FILE IN THIS OFFICE.  
 DATE 4-26-89  
*Robert S. Williams*  
 WEST VALLEY CITY ENGINEER

**APPROVAL AS TO FORM**  
 APPROVED AS TO FORM THIS 4th DAY OF May, A.D., 1989

*Mary R. Lane*  
 WEST VALLEY CITY ATTORNEY

**WEST VALLEY CITY COUNCIL**  
 PRESENTED TO THE WEST VALLEY CITY COUNCIL THIS 17th DAY OF March, A.D., 1989 APPROVED AND ACCEPTED.

*Robert Jones*  
 ATTORNEY AT LAW

**RECORDED # 4779000**

STATE OF UTAH, COUNTY OF SALT LAKE, RECORDED AND FILED AT THE REQUEST OF WEST VALLEY CITY  
 DATE 5-24-89 TIME 3:10 P.M. BOOK 89-5, PAGE 45  
 NO FEE

DEPUTY SALT LAKE COUNTY RECORDER

89-545

SURVEYOR'S CERTIFICATE

I, ROBERT B. JONES, do hereby certify that I am a Registered Civil Engineer, and or Land Surveyor, and that I hold License No. 1525, as prescribed under the laws of the State of Utah. I further certify that by authority of the Owners, I have made a survey of the tract of land shown on this plat and described as follows:

BOUNDARY DESCRIPTION

Beginning at a point on the South right-of-way line of 2100 South Street, said point being North 89°43'44" East 893.78 feet along the section line and South 0°16'16" East 50.00 feet from the North quarter corner of Section 20, Township 1 South, Range 1 West, Salt Lake Base and Meridian and running thence North 89°43'44" East 100.47 feet along said South right-of-way line to a point of a 30.48 foot radius curve to the left, the radius point of which bears South 0°16'16" East; thence Westerly and Southerly along the arc of said curve 47.73 feet through a central angle of 89°43'44" to a point of tangency; thence South 605.98 feet to a point of a 120.00 foot radius curve to the right; thence Southwesterly along the arc of said curve 94.25 feet through a central angle of 45°00'00" to a point of tangency; thence South 394.51 feet to a point of a 25.00 foot radius curve to the left; thence Southwesterly along the arc of said curve 39.27 feet through a central angle of 90°00'00" to a point of tangency; thence South 45°00'00" East 370.00 feet to a point of a 309.71 foot radius curve to the right; thence Southwesterly along the arc of said curve 243.25 feet through a central angle of 45°00'00" to a point of tangency; thence South 985.73 feet to a point of a 35.00 foot radius curve to the left; thence Southerly and Easterly along the arc of said curve 58.99 feet through a central angle of 96°33'38" to a point of tangency; thence North 83°26'22" East 192.43 feet to a point of an 870.75 foot radius curve to the right; thence Easterly along the arc of said curve 95.58 feet through a central angle of 61°7'22" to a point of tangency; thence North 89°43'44" East 0.29 feet; thence South 0°03'48" East 80.00 feet to a point of a 790.75 foot radius curve to the left; the radius point of which bears South 0°16'16" East; thence Westerly along the arc of said curve 86.80 feet through a central angle of 61°7'22" to a point of tangency; thence South 83°26'22" West 378.26 feet to a point of a 912.38 foot radius curve to the right; thence Westerly along the arc of said curve 104.47 feet through a central angle of 6°33'38" to a point of a 912.38 foot radius curve to the right; thence Westerly along a 35.00 foot radius curve to the left; thence Westerly and Southerly along the arc of said curve 55.03 feet through a central angle of 90°04'50" to a point on the East right-of-way line of 3600 West Street; thence Northerly along said East right-of-way line for three (3) courses: 1) North 0°04'50" West 35.05 feet; 2) West 7.00 feet; 3) North 0°04'50" West 115.15 feet; thence North 89°55'10" East 7.00 feet to a point of a 35.21 foot radius curve to the left, the radius point of which bears North 89°55'10" East; thence Southerly and Easterly along the arc of said curve 55.26 feet through a central angle of 89°55'10" to a point of tangency; thence East 682.98 feet to a point of a 832.38 foot radius curve to the left; thence Easterly along the arc of said curve 95.31 feet through a central angle of 6°33'38" to a point of tangency; thence North 83°26'22" East 65.04 feet to a point of a 35.00 foot radius curve to the left; thence Easterly and Northerly along the arc of said curve 50.97 feet through a central angle of 83°26'22" to a point of tangency; thence North 999.53 feet to a point of a 259.71 foot radius curve to the left; thence Northwesterly along the arc of said curve 203.98 feet through a central angle of 45°00'00" to a point of tangency; thence North 45°00'00" West 630.00 feet to a point of a 263.85 foot radius curve to the left; thence Northwesterly along the arc of said curve 207.23 feet through a central angle of 45°00'00" to a point of tangency; thence West 160.13 feet to a point of a 53.00 foot radius curve to the left; thence Southwesterly along the arc of said curve 50.23 feet through a central angle of 54°18'21" to a point on the Easterly right-of-way line of 3600 West Street; thence North 0°04'50" West 144.23 feet along said Easterly right-of-way line to a point on a curve to the left, the radius point of which is North 54°14'44" East 53.29 feet; thence Southwesterly along the arc of said curve 50.45 feet through a central angle of 54°14'44" to a point of tangency; thence East 160.13 feet to a point of a 227.28 foot radius curve to the right; thence Southwesterly along the arc of said curve 178.51 feet through a central angle of 45°00'00" to a point of tangency; thence South 45°00'00" East 241.57 feet to a point of a 50.00 foot radius curve to the left; thence Easterly along the arc of said curve 78.54 feet through a central angle of 90°00'00" to a point of tangency; thence North 45°00'00" East 359.31 feet to a point of an 80.00 foot radius curve to the left; thence Northwesterly along the arc of said curve 62.83 feet through a central angle of 45°00'00" to a point of tangency; thence North 605.98 feet to a point of a 30.00 foot radius curve to the left; thence Northerly and Westerly along the arc of said curve 47.27 feet through a central angle of 90°16'16" to the point of beginning. Contains 6.607 acres.



ROBERT B. JONES License No. 1525

OWNER'S DEDICATION

Know all men by these presents that, the undersigned owner(s) do hereby dedicate for perpetual use of the public all parcels of land shown on this plat as intended for Public use, said Right-of-Way width is as shown and described in the Surveyor's Certificate.

WEST PACIFIC HOLDINGS, INC., A CORPORATION BY: [Signatures]

GENE F. BOWALL COMPANY, A LIMITED PARTNERSHIP BY: [Signatures]

JOHNSON CONSULTING, INC. BY: [Signatures]

HERVYNS, A CALIFORNIA CORPORATION BY: [Signatures]

YSP GENERAL PARTNERSHIP BY: [Signatures]

BY: [Signatures]

BY: [Signatures]

BY: [Signatures]

BY: [Signatures]

BY: [Signatures]

BY: [Signatures]

BY: [Signatures]

BY: [Signatures]

BY: [Signatures]

BY: [Signatures]

BY: [Signatures]

BY: [Signatures]

BY: [Signatures]

BY: [Signatures]

BY: [Signatures]

BY: [Signatures]

BY: [Signatures]

BY: [Signatures]

BY: [Signatures]

BY: [Signatures]

BY: [Signatures]

BY: [Signatures]

BY: [Signatures]

BY: [Signatures]

BY: [Signatures]

BY: [Signatures]

BY: [Signatures]

BY: [Signatures]

BY: [Signatures]

BY: [Signatures]

BY: [Signatures]

BY: [Signatures]

BY: [Signatures]

BY: [Signatures]

BY: [Signatures]

BY: [Signatures]

BY: [Signatures]

BY: [Signatures]

BY: [Signatures]

BY: [Signatures]

BY: [Signatures]

BY: [Signatures]

BY: [Signatures]

BY: [Signatures]

BY: [Signatures]

BY: [Signatures]

BY: [Signatures]

BY: [Signatures]

BY: [Signatures]

BY: [Signatures]

BY: [Signatures]

BY: [Signatures]

BY: [Signatures]

BY: [Signatures]

BY: [Signatures]

BY: [Signatures]

BY: [Signatures]

BY: [Signatures]

BY: [Signatures]

BY: [Signatures]

BY: [Signatures]

BY: [Signatures]

BY: [Signatures]

BY: [Signatures]

BY: [Signatures]

BY: [Signatures]

BY: [Signatures]

BY: [Signatures]

BY: [Signatures]

BY: [Signatures]

BY: [Signatures]

BY: [Signatures]

BY: [Signatures]

BY: [Signatures]

BY: [Signatures]

BY: [Signatures]

BY: [Signatures]

BY: [Signatures]

BY: [Signatures]

BY: [Signatures]

BY: [Signatures]

BY: [Signatures]

BY: [Signatures]

BY: [Signatures]

BY: [Signatures]

BY: [Signatures]

BY: [Signatures]

BY: [Signatures]

BY: [Signatures]

BY: [Signatures]

BY: [Signatures]

BY: [Signatures]

BY: [Signatures]

BY: [Signatures]

BY: [Signatures]

BY: [Signatures]

BY: [Signatures]

BY: [Signatures]

BY: [Signatures]

BY: [Signatures]

BY: [Signatures]

BY: [Signatures]

BY: [Signatures]

BY: [Signatures]

BY: [Signatures]

BY: [Signatures]

BY: [Signatures]

BY: [Signatures]

BY: [Signatures]

BY: [Signatures]

TECHNOLOGY DRIVE, 2400 SOUTH STREET & TECHNOLOGY PARK WAY

LOCATED IN THE NE 1/4 & SE 1/4 OF SECTION 20, TOWNSHIP 1 SOUTH, RANGE 1 WEST, SALT LAKE BASE & MERIDIAN

SHEET 2 OF 2

RECORDED # 4779000

STATE OF UTAH, COUNTY OF SALT LAKE, RECORDED AND FILED AT THE REQUEST OF WEST VALLEY CITY

DATE: 5-24-89 TIME: 8:11 AM BOOK: 89-5 PAGE: 45

NO FEE DEPUTY SALT LAKE COUNTY RECORDER

WEST VALLEY CITY COUNCIL

PRESENTED TO THE WEST VALLEY CITY COUNCIL

AD, 19 89 AT WHICH TIME THIS SUBDIVISION WAS APPROVED AND ACCEPTED.

CITY MANAGER

APPROVAL AS TO FORM

APPROVED AS TO FORM THIS 4 74 DAY OF May AD, 19 89

WEST VALLEY CITY ATTORNEY

ENGINEER'S CERTIFICATE

I HEREBY CERTIFY THAT THIS OFFICE HAS EXAMINED THIS PLAT AND IT IS CORRECT IN ACCORDANCE WITH INFORMATION ON FILE IN THIS OFFICE.

4-26-89 DATE

WEST VALLEY CITY ENGINEER

GRANGER-HUNTER IMPROVEMENT DISTRICT

APPROVED THIS 15 87 DAY OF DECEMBER AD, 19 88

ENGINEER

PLANNING COMMISSION

APPROVED THIS 13 84 DAY OF APRIL AD, 1984 BY THE WEST VALLEY CITY PLANNING COMMISSION.

CHAIRMAN, WEST VALLEY CITY PLANNING COMMISSION

Table with 5 columns: No., Revision, Change Description, Date, and other details. Includes entries for corrections and changes to the plat.

BUSH AND GUDGELL, INC. ENGINEERS, PLANNERS, SURVEYORS 855 SOUTH 300 EAST S.L.C. UTAH 84111 PHONE (801) 364-1272

PREPARED BY: [Signature]

DATE: 5-24-89

BY: [Signature]

BY: [Signature]

89-5-45