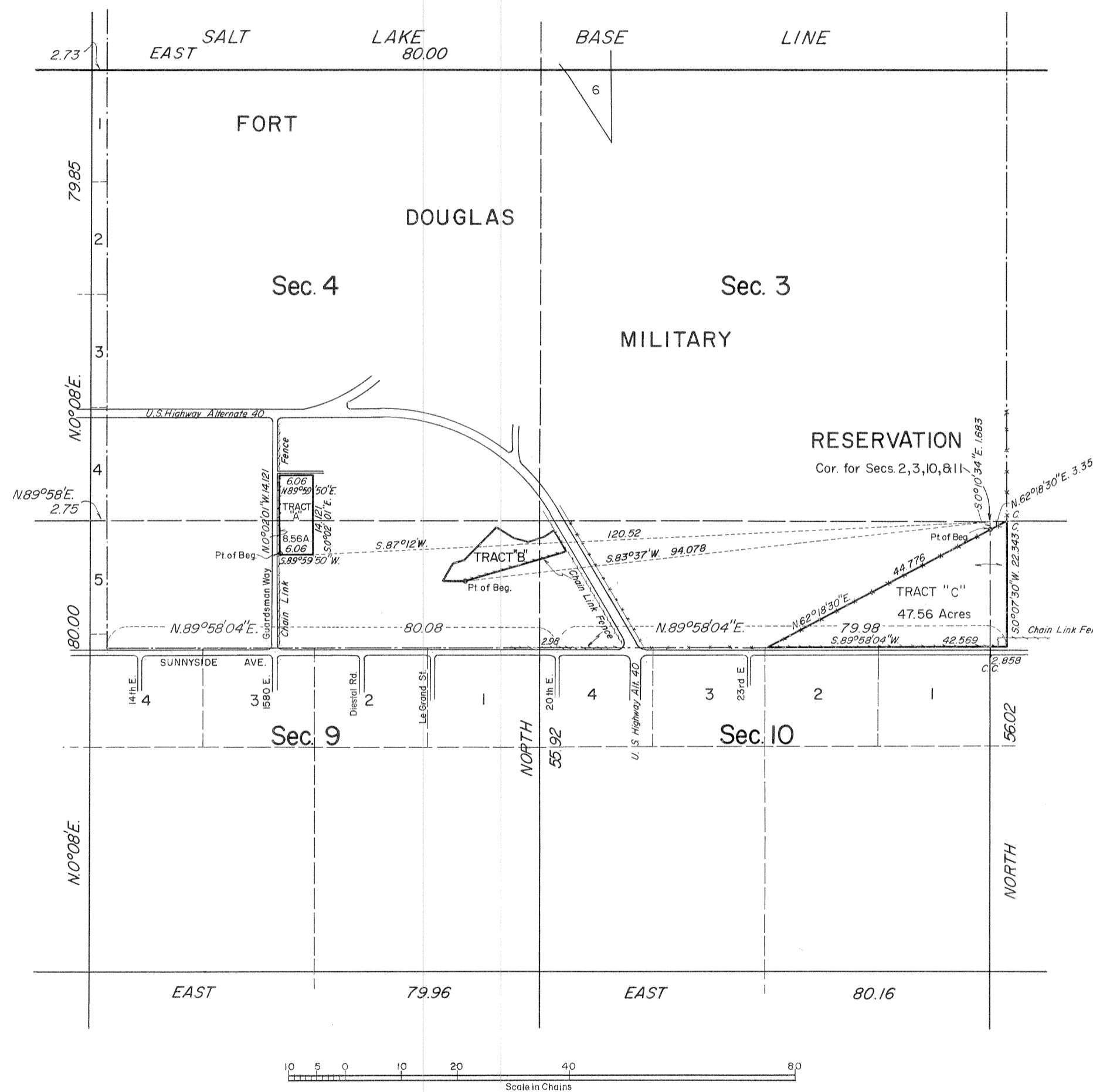
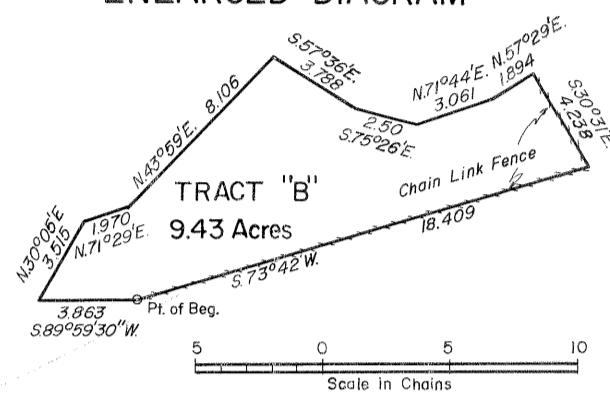


TOWNSHIP 1 SOUTH, RANGE 1 EAST, OF THE SALT LAKE MERIDIAN, UTAH.  
 SUPPLEMENTAL PLAT

ENLARGED DIAGRAM



This supplemental plat is prepared to provide designations and areas in sections 4, 9, 10, and 11, T. 1 S., R. 1 E., Salt Lake Meridian, within the Fort Douglas Military Reservation withdrawal and is based upon the plat approved May 31, 1869, and the plat of Tps. 1 N. and 1 S., R. 1 E., accepted October 28, 1963.

Descriptions for Tracts A and B were provided by the Veterans Administration, and the description for Tract C was provided by the Utah State Parks and Recreation Commission. Ties were made to each of the tracts from the corner of sections 2, 3, 10, and 11, by the Bureau.

UNITED STATES DEPARTMENT OF THE INTERIOR  
 BUREAU OF LAND MANAGEMENT  
 Washington, D. C. June 11, 1965

This plat, showing new designations and areas, is based upon the official records, and having been correctly prepared in accordance with the regulations, is hereby accepted.

For the Director

*Clark I. Gumm*

Acting Chief, Division of Engineering