

SURVEYORS CERTIFICATE

DO HEREBY CERTIFY THAT I AM A PROFESSIONAL LAND SURVEYOR IN THE STATE OF UTAH. I HAVE BEEN LICENSED BY THE BOARD OF LAND SURVEYORS OF THE STATE OF UTAH. I HAVE BEEN LICENSED AS A PROFESSIONAL LAND SURVEYOR SINCE 1988. I HAVE BEEN LICENSED AS A PROFESSIONAL LAND SURVEYOR SINCE 1988. I HAVE BEEN LICENSED AS A PROFESSIONAL LAND SURVEYOR SINCE 1988.

BOUNDARY DESCRIPTION
Corner of Section 18, T.2 S., R.2 E., S.1 R. & M., to the point of beginning.
COMMENTS: A point which is S. 89°21'40" W., 24.00 feet along the Station Line from the North 1/4
Corner of Section 18, T.2 S., R.2 E., S.1 R. & M., to the point of beginning.

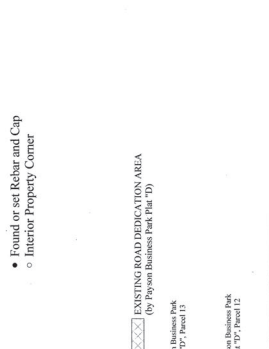
Table with columns: DISTANCE, BEARINGS, and REMARKS. Contains survey data including bearings and distances for various points and lines.

OWNERS DEDICATION
I, the undersigned, do hereby dedicate to the City of Payson, Utah, the following described land and improvements thereon for the use and benefit of the public.

ACCEPTANCE BY LEGISLATIVE BODY
I, the undersigned, do hereby accept on behalf of the City of Payson, Utah, the dedication of the following described land and improvements thereon for the use and benefit of the public.

PLANNING COMMISSION APPROVAL
APPROVED THIS 1st DAY OF November, A.D. 2017, BY THE PLANNING COMMISSION.

PAYSON BUSINESS PARK
SUBDIVISION
INCLUDING AVACATION OF LOT 14, PAYSON BUSINESS PARK PLAT "D"
PAYSON CITY, UTAH COUNTY, UTAH Scale 1" = 100'



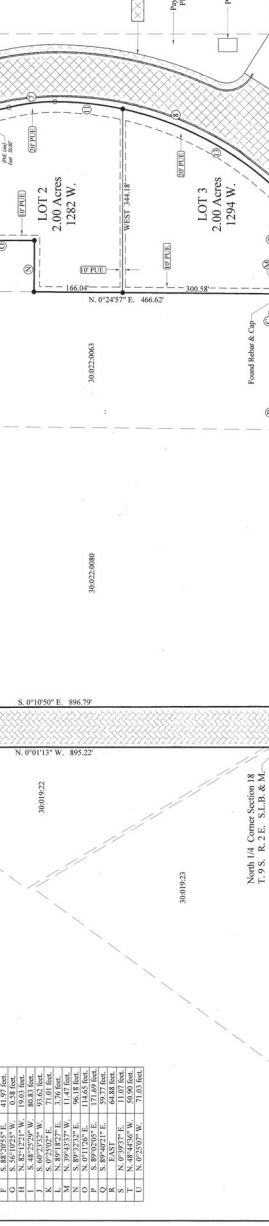
SPECIAL NOTES
1. Improvement of lots will require additional approvals and permits from Payson City.
2. FOUND REBAR AND CAP. When the Surveyor found existing Rebar and Cap that were within close proximity to the boundary lines, they were noted and marked with a red 'X' and 'R' for rebar and 'C' for cap.

PAYSON CITY FIRE DEPT.
I, the undersigned, do hereby dedicate to the City of Payson, Utah, the following described land and improvements thereon for the use and benefit of the public.

DAVID LUND
COUNTY CLERK
I, the undersigned, do hereby certify that this plat is a true and correct copy of the original filed in my office.

DOMINION ENERGY
I, the undersigned, do hereby certify that this plat is a true and correct copy of the original filed in my office.

CURVE TABLE and LINE TABLE. Contains mathematical data for curve and line segments, including stationing and bearings.



SPECIAL NOTES
1. Improvement of lots will require additional approvals and permits from Payson City.
2. FOUND REBAR AND CAP. When the Surveyor found existing Rebar and Cap that were within close proximity to the boundary lines, they were noted and marked with a red 'X' and 'R' for rebar and 'C' for cap.

PAYSON CITY FIRE DEPT.
I, the undersigned, do hereby dedicate to the City of Payson, Utah, the following described land and improvements thereon for the use and benefit of the public.

DAVID LUND
COUNTY CLERK
I, the undersigned, do hereby certify that this plat is a true and correct copy of the original filed in my office.

DOMINION ENERGY
I, the undersigned, do hereby certify that this plat is a true and correct copy of the original filed in my office.

15840

PAYSON CITY SALES TAX
PAYSON CITY SALES TAX WILL BE MATERIALLY ADDED BY THE CITY OF PAYSON TO THE VACATION OF LOT 14, PAYSON BUSINESS PARK PLAT "D" IS HEREBY VACATED.

APPROVED BY: [Signature]
DATE: Jan. 8, 2018
CITY CLERK