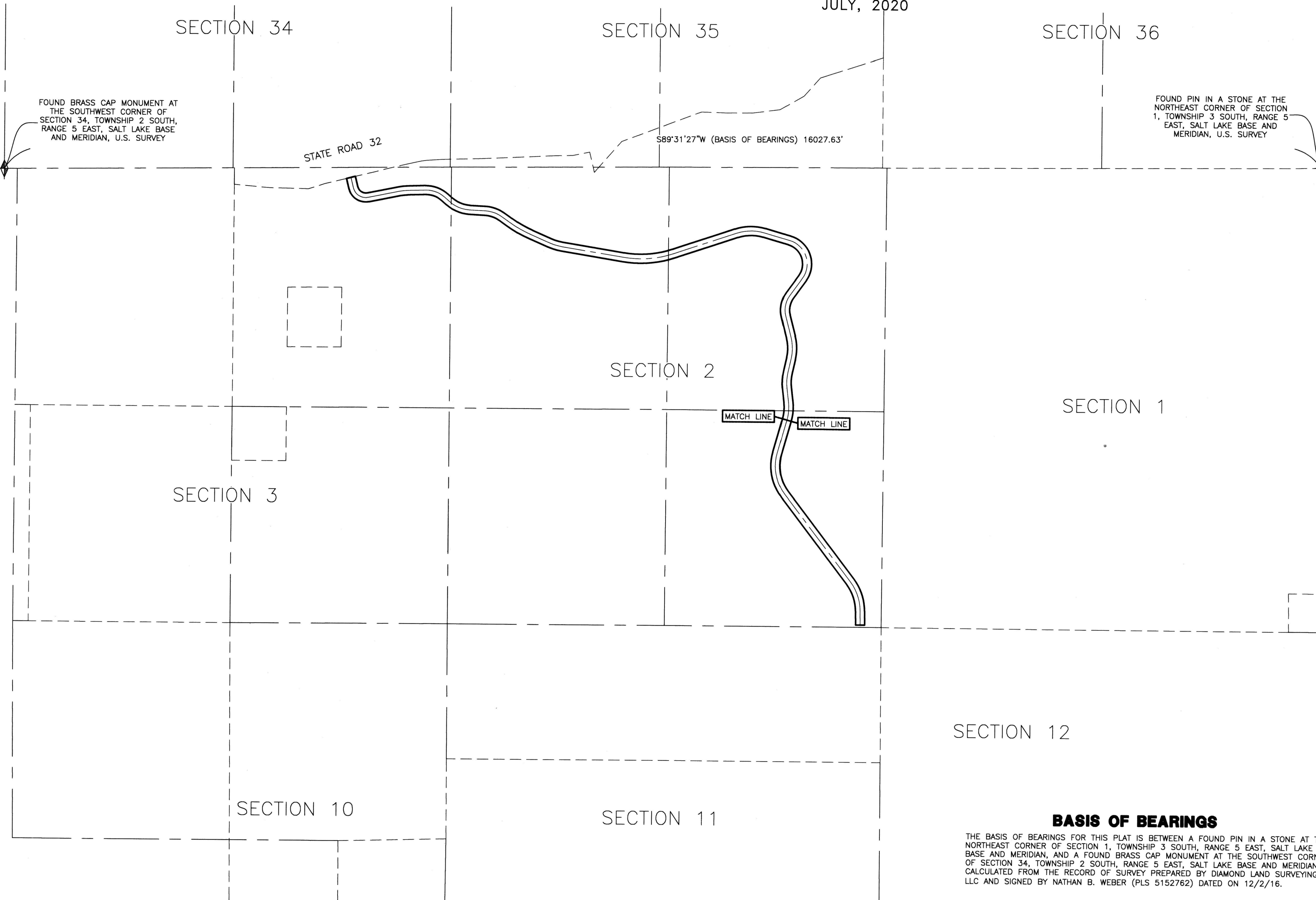


# ROAD DEDICATION BENLOCH RANCH ROAD

PART OF SECTIONS 2, 3, AND 11, TOWNSHIP 3 SOUTH, RANGE 5 EAST, SALT LAKE BASE AND MERIDIAN, U.S. SURVEY  
WASATCH COUNTY, UTAH  
JULY, 2020



**BOUNDARY DESCRIPTION**

PART OF SECTIONS 2, 3, AND 11, TOWNSHIP 3 SOUTH, RANGE 5 EAST, SALT LAKE BASE AND MERIDIAN, U.S. SURVEY, MORE PARTICULARLY DESCRIBED AS FOLLOWS:

BEGINNING AT A POINT ON THE SOUTHERLY RIGHT OF WAY LINE OF STATE ROAD 32, SAID POINT BEING SOUTH 88.43 FEET AND EAST 4169.20 FEET FROM THE SOUTHWEST CORNER OF SECTION 34, TOWNSHIP 2 SOUTH, RANGE 5 EAST (BASIS OF BEARINGS FOR ENTIRE PROJECT IS S89°31'27"W 16027.63 FEET BETWEEN THE NORTHEAST CORNER OF SECTION 1, TOWNSHIP 3 SOUTH, RANGE 5 EAST AND THE SOUTHWEST CORNER OF SECTION 34, TOWNSHIP 2 SOUTH, RANGE 5 EAST); THENCE N76°18'19"E ALONG THE SOUTHERLY RIGHT OF WAY LINE OF STATE ROAD 32, 110.00 FEET; THENCE S13°43'04"E 136.15 FEET; THENCE ALONG A TANGENT CURVE TURNING TO THE LEFT WITH A RADIUS OF 95.00 FEET, AN ARC LENGTH OF 145.83 FEET, A DELTA ANGLE OF 87°57'14", A CHORD BEARING OF S87°41'42"E, AND A CHORD LENGTH OF 131.93 FEET; THENCE N78°19'41"E 384.54 FEET; THENCE ALONG A TANGENT CURVE TURNING TO THE RIGHT WITH A RADIUS OF 655.00 FEET, AN ARC LENGTH OF 115.59 FEET, A DELTA ANGLE OF 10°08'41", A CHORD BEARING OF N83°23'02"E, AND A CHORD LENGTH OF 115.44 FEET; THENCE N88°29'23"E 216.48 FEET; THENCE ALONG A TANGENT CURVE TURNING TO THE RIGHT WITH A RADIUS OF 393.00 FEET, AN ARC LENGTH OF 297.21 FEET, A DELTA ANGLE OF 43°19'49", A CHORD BEARING OF S69°53'43"E, AND A CHORD LENGTH OF 290.18 FEET; THENCE S48°13'48"E 76.88 FEET; THENCE ALONG A TANGENT CURVE TURNING TO THE LEFT WITH A RADIUS OF 349.00 FEET, AN ARC LENGTH OF 236.31 FEET, A DELTA ANGLE OF 38°47'41", A CHORD BEARING OF S67°37'38"E, AND A CHORD LENGTH OF 231.82 FEET; THENCE S87°01'29"E 193.21 FEET; THENCE ALONG A TANGENT CURVE TURNING TO THE RIGHT WITH A RADIUS OF 430.00 FEET, AN ARC LENGTH OF 241.72 FEET, A DELTA ANGLE OF 32°12'30", A CHORD BEARING OF S70°55'14"E, AND A CHORD LENGTH OF 238.55 FEET; THENCE S54°48'59"E 122.63 FEET; THENCE ALONG A TANGENT CURVE TURNING TO THE LEFT WITH A RADIUS OF 1445.00 FEET, AN ARC LENGTH OF 285.17 FEET, A DELTA ANGLE OF 11°18'28", A CHORD BEARING OF S60°28'12"E, AND A CHORD LENGTH OF 284.71 FEET; THENCE S69°07'25"E 250.14 FEET; THENCE ALONG A TANGENT CURVE TURNING TO THE LEFT WITH A RADIUS OF 595.00 FEET, AN ARC LENGTH OF 150.34 FEET, A DELTA ANGLE OF 14°28'39", A CHORD BEARING OF S73°21'44"E, AND A CHORD LENGTH OF 149.84 FEET; THENCE S80°36'04"E 756.49 FEET; THENCE ALONG A TANGENT CURVE TURNING TO THE LEFT WITH A RADIUS OF 1205.00 FEET, AN ARC LENGTH OF 591.33 FEET, A DELTA ANGLE OF 28°07'00", A CHORD BEARING OF N85°20'26"E, AND A CHORD LENGTH OF 585.41 FEET; THENCE N71°16'56"E 805.33 FEET; THENCE ALONG A TANGENT CURVE TURNING TO THE RIGHT WITH A RADIUS OF 620.00 FEET, AN ARC LENGTH OF 377.35 FEET, A DELTA ANGLE OF 34°52'31", A CHORD BEARING OF N88°43'12"E, AND A CHORD LENGTH OF 371.59 FEET; THENCE S73°50'33"E 320.44 FEET; THENCE ALONG A TANGENT CURVE TURNING TO THE RIGHT WITH A RADIUS OF 355.00 FEET, AN ARC LENGTH OF 675.08 FEET, A DELTA ANGLE OF 109°8'0", A CHORD BEARING OF S19°02'31"E, AND A CHORD LENGTH OF 580.18 FEET; THENCE S35°45'34"W 258.56 FEET; THENCE ALONG A TANGENT CURVE TURNING TO THE LEFT WITH A RADIUS OF 245.00 FEET, AN ARC LENGTH OF 214.39 FEET, A DELTA ANGLE OF 50°08'15", A CHORD BEARING OF S10°41'26"W, AND A CHORD LENGTH OF 207.62 FEET; THENCE S14°22'39"E 268.15 FEET; THENCE ALONG A TANGENT CURVE TURNING TO THE RIGHT WITH A RADIUS OF 620.00 FEET, AN ARC LENGTH OF 291.64 FEET, A DELTA ANGLE OF 26°57'05", A CHORD BEARING OF S00°54'07"E, AND A CHORD LENGTH OF 288.96 FEET; THENCE S12°34'28"W 171.17 FEET; THENCE ALONG A TANGENT CURVE TURNING TO THE LEFT WITH A RADIUS OF 510.00 FEET, AN ARC LENGTH OF 172.43 FEET, A DELTA ANGLE OF 19°22'16", A CHORD BEARING OF S02°53'18"W, AND A CHORD LENGTH OF 171.81 FEET; THENCE S08°47'49"E 169.83 FEET; THENCE ALONG A TANGENT CURVE TURNING TO THE RIGHT WITH A RADIUS OF 620.00 FEET, AN ARC LENGTH OF 243.69 FEET, A DELTA ANGLE OF 22°31'11", A CHORD BEARING OF S04°27'47"W, AND A CHORD LENGTH OF 242.12 FEET; THENCE S15°43'24"W 422.48 FEET; THENCE ALONG A TANGENT CURVE TURNING TO THE LEFT WITH A RADIUS OF 110.00 FEET, AN ARC LENGTH OF 472.07 FEET, A DELTA ANGLE OF 53°02'05", A CHORD BEARING OF S10°47'38"E, AND A CHORD LENGTH OF 458.48 FEET; THENCE S37°18'41"E 1338.30 FEET; THENCE ALONG A TANGENT CURVE TURNING TO THE RIGHT WITH A RADIUS OF 655.00 FEET, AN ARC LENGTH OF 421.41 FEET, A DELTA ANGLE OF 38°51'44", A CHORD BEARING OF S18°52'49"E, AND A CHORD LENGTH OF 414.18 FEET; THENCE S02°05'57"E 186.87 FEET; THENCE S89°50'41"W 110.00 FEET; THENCE N00°26'57"W 166.11 FEET; THENCE ALONG A TANGENT CURVE TURNING TO THE LEFT WITH A RADIUS OF 545.00 FEET, AN ARC LENGTH OF 350.64 FEET, A DELTA ANGLE OF 38°51'44", A CHORD BEARING OF N18°52'49"W, AND A CHORD LENGTH OF 344.62 FEET; THENCE N30°84'1"W 1338.30 FEET; THENCE ALONG A TANGENT CURVE TURNING TO THE RIGHT WITH A RADIUS OF 620.00 FEET, AN ARC LENGTH OF 573.89 FEET, A DELTA ANGLE OF 53°02'05", A CHORD BEARING OF N10°47'38"W, AND A CHORD LENGTH OF 553.62 FEET; THENCE N18°43'24"E 422.48 FEET; THENCE ALONG A TANGENT CURVE TURNING TO THE LEFT WITH A RADIUS OF 510.00 FEET, AN ARC LENGTH OF 172.43 FEET, A DELTA ANGLE OF 19°22'16", A CHORD BEARING OF N04°27'47"E, AND A CHORD LENGTH OF 199.16 FEET; THENCE N08°47'49"W 169.83 FEET; THENCE ALONG A TANGENT CURVE TURNING TO THE RIGHT WITH A RADIUS OF 620.00 FEET, AN ARC LENGTH OF 209.81 FEET, A DELTA ANGLE OF 19°22'16", A CHORD BEARING OF N02°53'18"E, AND A CHORD LENGTH OF 208.62 FEET; THENCE N12°34'26"E 171.17 FEET; THENCE ALONG A TANGENT CURVE TURNING TO THE LEFT WITH A RADIUS OF 510.00 FEET, AN ARC LENGTH OF 239.90 FEET, A DELTA ANGLE OF 26°57'05", A CHORD BEARING OF N00°54'07"W, AND A CHORD LENGTH OF 237.69 FEET; THENCE N14°22'39"W 268.15 FEET; THENCE ALONG A TANGENT CURVE TURNING TO THE RIGHT WITH A RADIUS OF 355.00 FEET, AN ARC LENGTH OF 310.65 FEET, A DELTA ANGLE OF 50°08'15", A CHORD BEARING OF N10°41'26"E, AND A CHORD LENGTH OF 300.83 FEET; THENCE N35°45'34"E 258.56 FEET; THENCE ALONG A TANGENT CURVE TURNING TO THE LEFT WITH A RADIUS OF 245.00 FEET, AN ARC LENGTH OF 468.66 FEET, A DELTA ANGLE OF 109°36'04", A CHORD BEARING OF N19°02'31"W, AND A CHORD LENGTH OF 400.40 FEET; THENCE N73°50'33"W 320.44 FEET; THENCE ALONG A TANGENT CURVE TURNING TO THE LEFT WITH A RADIUS OF 510.00 FEET, AN ARC LENGTH OF 110.43 FEET, A DELTA ANGLE OF 34°52'31", A CHORD BEARING OF S88°43'12"W, AND A CHORD LENGTH OF 305.66 FEET; THENCE S71°16'56"W 805.33 FEET; THENCE ALONG A TANGENT CURVE TURNING TO THE RIGHT WITH A RADIUS OF 1315.00 FEET, AN ARC LENGTH OF 645.31 FEET, A DELTA ANGLE OF 28°07'00", A CHORD BEARING OF S85°20'26"W, AND A CHORD LENGTH OF 638.85 FEET; THENCE N80°36'04"W 756.49 FEET; THENCE ALONG A TANGENT CURVE TURNING TO THE RIGHT WITH A RADIUS OF 705.00 FEET, AN ARC LENGTH OF 178.14 FEET, A DELTA ANGLE OF 14°28'39", A CHORD BEARING OF N73°21'44"W, AND A CHORD LENGTH OF 177.67 FEET; THENCE N89°07'25"W 250.14 FEET; THENCE ALONG A TANGENT CURVE TURNING TO THE RIGHT WITH A RADIUS OF 1555.00 FEET, AN ARC LENGTH OF 306.88 FEET, A DELTA ANGLE OF 11°18'28", A CHORD BEARING OF N60°28'12"W, AND A CHORD LENGTH OF 306.38 FEET; THENCE N54°48'59"W 122.63 FEET; THENCE ALONG A TANGENT CURVE TURNING TO THE LEFT WITH A RADIUS OF 320.00 FEET, AN ARC LENGTH OF 178.89 FEET, A DELTA ANGLE OF 32°12'30", A CHORD BEARING OF N70°55'14"W, AND A CHORD LENGTH OF 177.53 FEET; THENCE N87°01'29"W 193.21 FEET; THENCE ALONG A TANGENT CURVE TURNING TO THE RIGHT WITH A RADIUS OF 459.00 FEET, AN ARC LENGTH OF 310.79 FEET, A DELTA ANGLE OF 38°47'41", A CHORD BEARING OF N87°37'38"W, AND A CHORD LENGTH OF 304.88 FEET; THENCE N48°13'48"W 76.88 FEET; THENCE ALONG A TANGENT CURVE TURNING TO THE LEFT WITH A RADIUS OF 283.00 FEET, AN ARC LENGTH OF 214.02 FEET, A DELTA ANGLE OF 43°19'49", A CHORD BEARING OF N89°53'43"W, AND A CHORD LENGTH OF 208.96 FEET; THENCE S88°26'23"W 216.48 FEET; THENCE ALONG A TANGENT CURVE TURNING TO THE LEFT WITH A RADIUS OF 545.00 FEET, AN ARC LENGTH OF 96.18 FEET, A DELTA ANGLE OF 10°08'41", A CHORD BEARING OF S83°23'02"W, AND A CHORD LENGTH OF 96.06 FEET; THENCE S78°19'41"W 384.54 FEET; THENCE ALONG A TANGENT CURVE TURNING TO THE RIGHT WITH A RADIUS OF 205.00 FEET, AN ARC LENGTH OF 314.69 FEET, A DELTA ANGLE OF 87°57'14", A CHORD BEARING OF N57°41'42"E, AND A CHORD LENGTH OF 284.69 FEET; THENCE N13°43'04"W 136.19 FEET TO THE POINT OF BEGINNING.

CONTAINING 27.727 ACRES MORE OR LESS.

**BASIS OF BEARINGS**

THE BASIS OF BEARINGS FOR THIS PLAT IS BETWEEN A FOUND PIN IN A STONE AT THE NORTHEAST CORNER OF SECTION 1, TOWNSHIP 3 SOUTH, RANGE 5 EAST, SALT LAKE BASE AND MERIDIAN, AND A FOUND BRASS CAP MONUMENT AT THE SOUTHWEST CORNER OF SECTION 34, TOWNSHIP 2 SOUTH, RANGE 5 EAST, SALT LAKE BASE AND MERIDIAN AS CALCULATED FROM THE RECORD OF SURVEY PREPARED BY DIAMOND LAND SURVEYING, LLC AND SIGNED BY NATHAN B. WEBER (PLS 5152762) DATED ON 12/2/16.

Upon recordation of this plat Talisman Major Roadways are hereby vacated and combined with adjoining parcels.

**SURVEYOR'S CERTIFICATE**

I, **TREVOR J. HATCH**, DO HEREBY CERTIFY THAT I AM A PROFESSIONAL LAND SURVEYOR IN THE STATE OF UTAH IN ACCORDANCE WITH TITLE 58, CHAPTER 22, PROFESSIONAL ENGINEERS AND LAND SURVEYORS ACT; AND THAT I HAVE COMPLETED A SURVEY OF THE PROPERTY DESCRIBED ON THIS PLAT IN ACCORDANCE WITH SECTION 17-23-17 AND HAVE VERIFIED ALL MEASUREMENTS, AND HAVE PLACED MONUMENTS AS REPRESENTED ON THIS PLAT, AND THAT THIS ROAD DEDICATION PLAT OF **BENLOCH RANCH ROAD** IN **WASATCH COUNTY**, UTAH, HAS BEEN DRAWN CORRECTLY TO THE DESIGNATED SCALE AND IS A TRUE AND CORRECT REPRESENTATION OF THE HEREIN DESCRIBED LANDS INCLUDED IN SAID SUBDIVISION, BASED UPON DATA COMPILED FROM RECORDS IN THE **WASATCH COUNTY** RECORDER'S OFFICE AND FROM SAID SURVEY MADE BY ME ON THE GROUND, I FURTHER CERTIFY THAT THE REQUIREMENTS OF ALL APPLICABLE STATUTES AND ORDINANCES OF **WASATCH COUNTY**, CONCERNING ZONING REQUIREMENTS REGARDING LOT MEASUREMENTS HAVE BEEN COMPLIED WITH.

SIGNED THIS 7<sup>th</sup> DAY OF July, 2020.

9031945  
UTAH LICENSE NUMBER

**OWNERS DEDICATION AND CERTIFICATION**

KNOW ALL MEN BY THESE PRESENTS THAT WE, ALL OF THE UNDERSIGNED OWNERS OF ALL OF THE PROPERTY DESCRIBED HEREON AND SHOWN ON THIS MAP CONSISTING OF TWO SHEETS, DO HEREBY DEDICATE THE ROAD AS SHOWN HEREON FOR THE PERPETUAL USE OF THE PUBLIC. THE ROAD SHALL ALSO BE A UTILITY EASEMENT IN ITS ENTIRETY FOR THE CONSTRUCTION AND MAINTENANCE OF SUBTERRANEAN ELECTRICAL, TELEPHONE, NATURAL GAS, SEWER, STORM DRAINAGE, IRRIGATION, AND WATER LINES, TOGETHER WITH THE RIGHT TO ACCESS THERETO.

SIGNED THIS 9<sup>th</sup> DAY OF July, 2020.

Jamie Mackay / Jamie Mackay **MANAGING MEMBER**  
**JAMIE MACKAY FIRESIDE PARK CITY LLC**

**ACKNOWLEDGMENT**

STATE OF Wyoming )  
COUNTY OF Teton )

ON THE 9<sup>th</sup> DAY OF July, 2020, PERSONALLY APPEARED BEFORE ME, THE UNDERSIGNED NOTARY PUBLIC, **Brandy Larson** (AND **Jamie Mackay** AND **MANAGING MEMBER** OF SAID CORPORATION AND THAT THEY SIGNED THE ABOVE OWNER'S DEDICATION AND CERTIFICATION FREELY, VOLUNTARILY, AND IN BEHALF OF SAID CORPORATION FOR THE PURPOSES THEREIN MENTIONED.

October 6, 2022  
COMMISSION EXPIRES

Brandy Larson  
NOTARY PUBLIC

**WASATCH COUNTY MANAGER**

THE COUNTY OF WASATCH APPROVES THIS SUBDIVISION AND HEREBY ACCEPTS THIS DEDICATION OF ALL STREETS INTENDED FOR PUBLIC PURPOSES FOR THE PERPETUAL USE OF THE PUBLIC, THIS 4<sup>th</sup> DAY OF NOV, 2020. SUBJECT TO THE FOLLOWING CONDITIONS:

Michelle De Cal  
CHAIRMAN, COUNTY COMMISSION  
Colby De Cal  
COUNTY CLERK

**JORDANELLE SPECIAL SERVICE DISTRICT & JORDANELLE SPECIAL IMPROVEMENT DISTRICT**

APPROVED THIS 9<sup>th</sup> DAY OF sept, 2020.

Maureen  
JORDANELLE SPECIAL SERVICE DISTRICT & JORDANELLE SPECIAL IMPROVEMENT DISTRICT REPRESENTATIVE

**WASATCH COUNTY FIRE CHIEF**

APPROVED THIS 9<sup>th</sup> DAY OF sep, 2020.  
SUBJECT TO THE FOLLOWING CONDITIONS:

Ernie Miles  
WASATCH COUNTY FIRE CHIEF

**APPROVAL AS TO FORM**

APPROVED AS TO FORM THIS 6<sup>th</sup> DAY OF August, 2020.

Jamie Mackay  
WASATCH COUNTY ATTORNEY

**WASATCH COUNTY WEED BOARD**

APPROVED THIS 9<sup>th</sup> DAY OF sept, 2020.

Quinn  
WASATCH COUNTY WEED BOARD REPRESENTATIVE

**WASATCH COUNTY SHERIFF**

APPROVED THIS 3<sup>rd</sup> DAY OF August, 2020.  
SUBJECT TO THE FOLLOWING CONDITIONS:

Bill  
WASATCH COUNTY SHERIFF

**WASATCH COUNTY COUNCIL**

APPROVED THIS 9<sup>th</sup> DAY OF October, 2020, BY THE WASATCH COUNTY COUNCIL.

Dan  
CHAIR, WASATCH COUNTY COUNCIL

**WASATCH COUNTY SURVEYOR**

I HEREBY CERTIFY THAT THIS OFFICE HAS EXAMINED THIS PLAT AND IT IS CORRECT IN ACCORDANCE WITH INFORMATION ON FILE IN THIS OFFICE.

SIGNED THIS 23<sup>rd</sup> DAY OF July, 2020.

Tina K  
WASATCH COUNTY SURVEYOR

**WASATCH COUNTY ENGINEERING DEPT.**

APPROVED THIS 4<sup>th</sup> DAY OF NOV, 2020.  
SUBJECT TO THE FOLLOWING CONDITIONS:

Michelle De Cal  
DIRECTOR, WASATCH COUNTY ENGINEERING

**WASATCH COUNTY PUBLIC WORKS DEPT.**

APPROVED THIS 8<sup>th</sup> DAY OF sept, 2020.  
SUBJECT TO THE FOLLOWING CONDITIONS:

Brandy  
DIRECTOR, WASATCH COUNTY PUBLIC WORKS

**WASATCH COUNTY PLANNING OFFICE**

APPROVED THIS 2<sup>nd</sup> DAY OF Nov, 2020. BY THE WASATCH COUNTY PLANNING DIRECTOR.

David Smith  
WASATCH COUNTY PLANNING DIRECTOR

**WASATCH COUNTY SOLID WASTE**

APPROVED THIS 15<sup>th</sup> DAY OF September, 2020, BY WASATCH COUNTY SOLID WASTE.

Chris  
WASATCH COUNTY SOLID WASTE

**WASATCH COUNTY HEALTH DEPARTMENT**

APPROVED THIS 10<sup>th</sup> DAY OF Sept, 2020.  
SUBJECT TO THE FOLLOWING CONDITIONS:

Janet  
DIRECTOR, COUNTY HEALTH DEPARTMENT

**Project Info.**

Surveyor: T. HATCH  
Designer: N. ANDERSON  
Begin Date: 07-08-19  
Name: ROAD DEDICATION  
BENLOCH RANCH ROAD  
Number: 6922-01  
Revision: \_\_\_\_\_  
Scale: 1"=800'

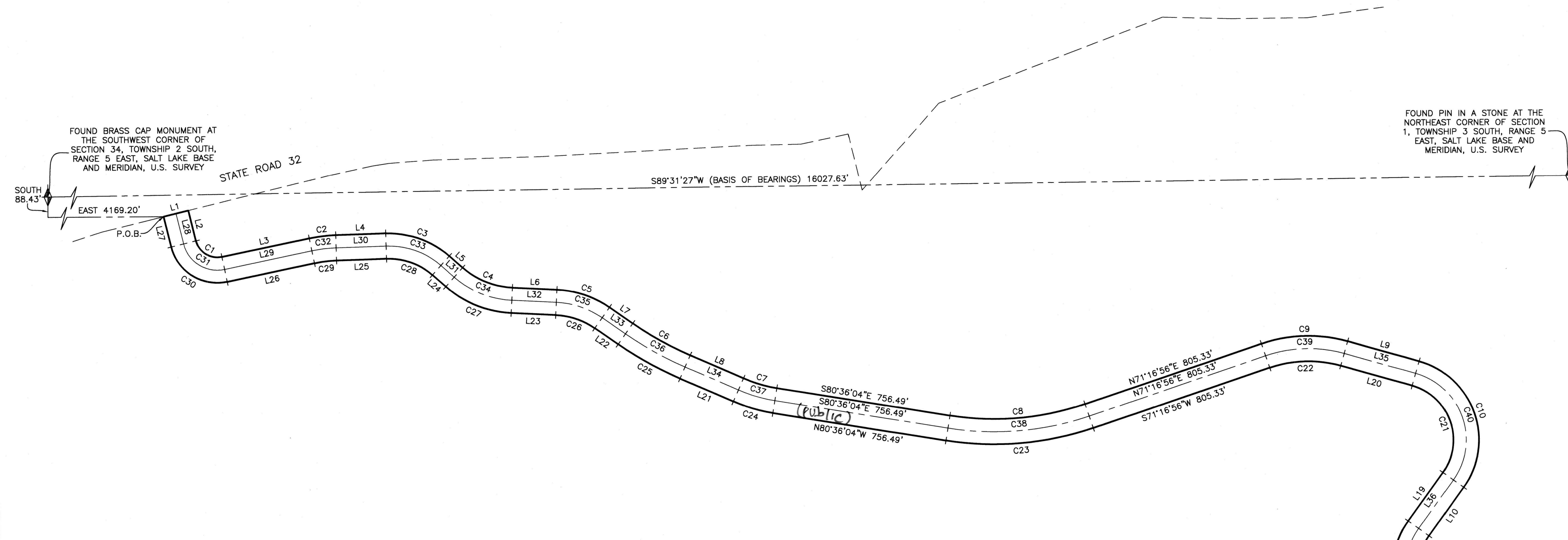
**WASATCH COUNTY RECORDER**

ENTRY NO. 490915 DATE 22-DEC-2020 TIME 1:26:50 PM FEE \$ 100.00 BOOK 1330  
PAGE 416 FOR HP WASATCH COUNTY RECORDER  
**\* AJ FIRESIDE PARK CITY LLC**

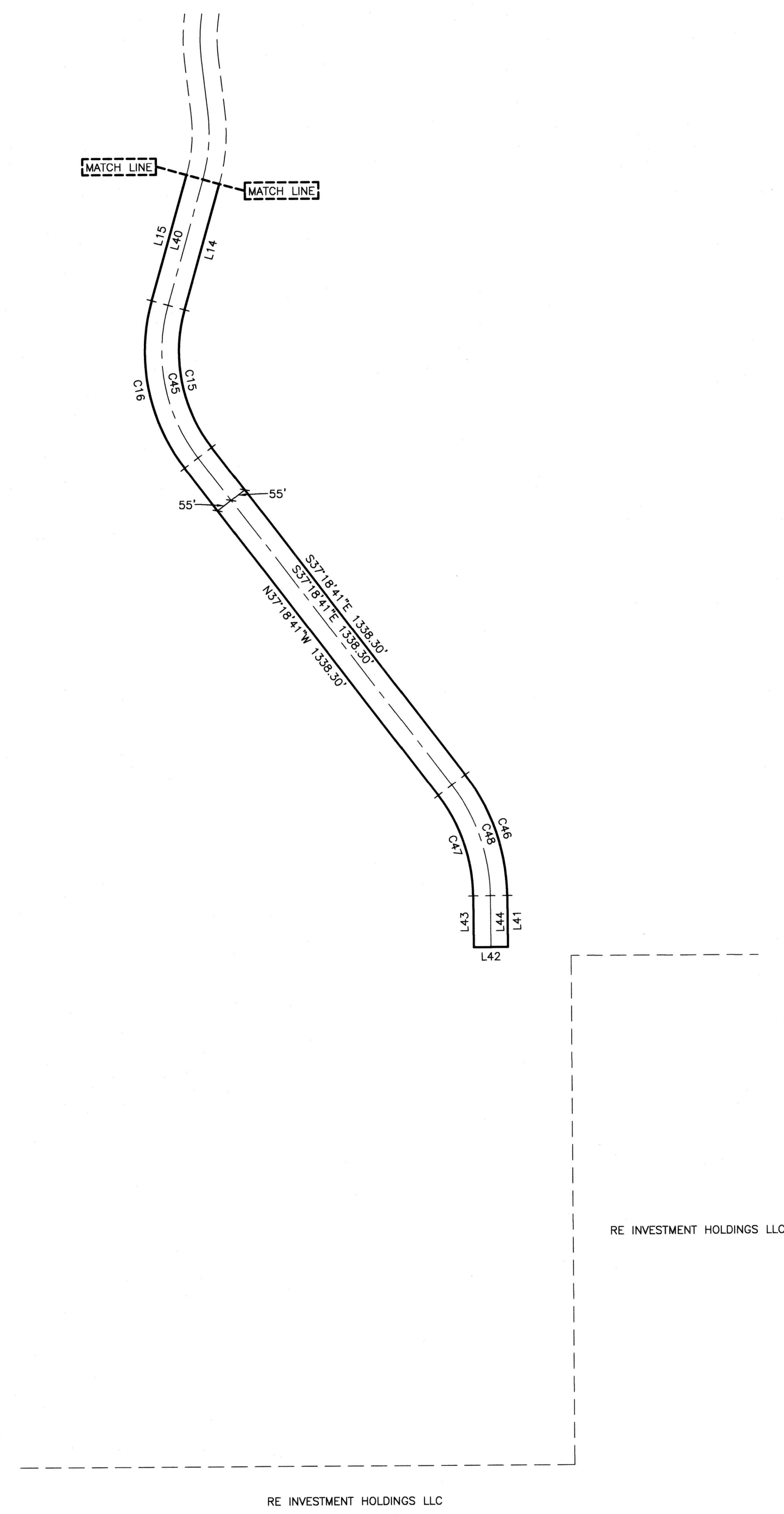
**Reeve & Associates, Inc.**  
5160 S 1500 W, RIVERDALE, UTAH 84405  
TEL: (801) 621-3100 FAX: (801) 621-2666 www.reeve-associ.com

# ROAD DEDICATION BENLOCH RANCH ROAD

PART OF SECTIONS 2, 3, AND 11, TOWNSHIP 3 SOUTH, RANGE 5 EAST, SALT LAKE BASE AND MERIDIAN, U.S. SURVEY  
WASATCH COUNTY, UTAH  
JULY, 2020



FOUND PIN IN A STONE AT THE  
NORTHEAST CORNER OF SECTION  
1, TOWNSHIP 3 SOUTH, RANGE 5  
EAST, SALT LAKE BASE AND  
MERIDIAN, U.S. SURVEY

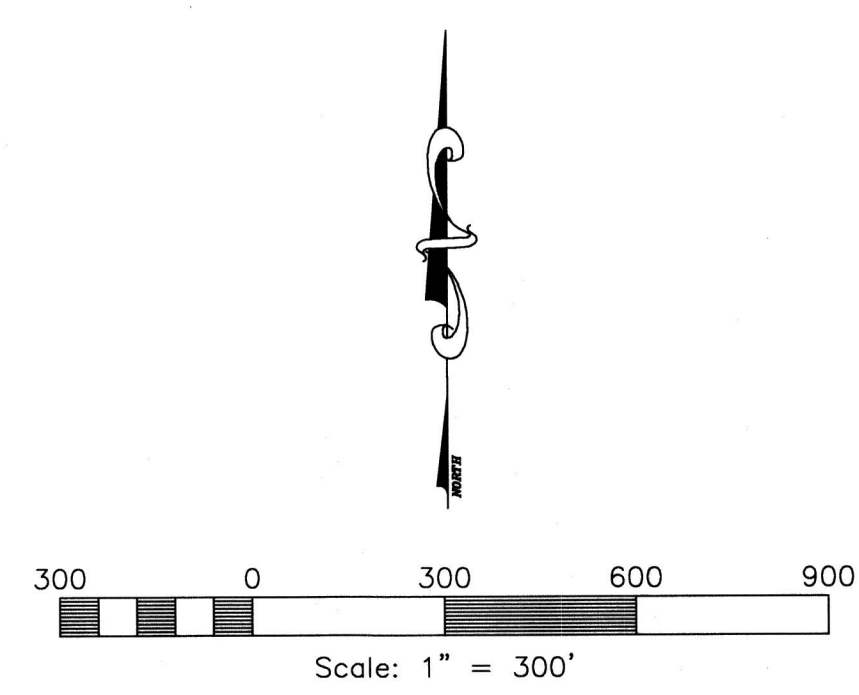


**CURVE TABLE**

#	RADIUS	ARC LENGTH	CHD LENGTH	TANGENT	CHD BEARING	DELTA
C1	95.00'	145.83'	131.93'	91.67'	S57°41'42\"	87°57'14\"
C2	655.00'	115.39'	115.44'	57.99'	N83°23'02\"	10°08'41\"
C3	393.00'	297.21'	290.18'	156.12'	S69°53'43\"	43°19'49\"
C4	349.00'	236.31'	231.82'	122.88'	S67°37'38\"	38°47'41\"
C5	430.00'	241.72'	238.55'	124.15'	S70°55'14\"	32°12'30\"
C6	1445.00'	285.17'	284.71'	143.09'	S60°28'12\"	11°18'26\"
C7	595.00'	150.34'	149.94'	75.57'	S73°21'44\"	14°28'39\"
C8	1705.00'	591.33'	585.41'	301.74'	N85°20'26\"	28°07'00\"
C9	620.00'	377.39'	371.59'	194.74'	N88°43'12\"	34°52'31\"
C10	355.00'	679.08'	580.18'	503.25'	S19°02'31\"	109°36'04\"
C11	245.00'	214.39'	207.62'	114.60'	S10°41'26\"	50°08'15\"
C12	620.00'	291.64'	286.96'	146.57'	S00°54'07\"	26°57'08\"
C13	510.00'	172.43'	171.81'	87.04'	S02°53'18\"	19°22'16\"
C14	620.00'	243.69'	242.12'	123.44'	S04°27'47\"	22°31'11\"
C15	510.00'	472.07'	455.40'	254.47'	S10°47'38\"	53°02'05\"
C16	620.00'	573.89'	553.62'	309.35'	N10°47'38\"	53°02'05\"
C17	510.00'	200.45'	199.16'	101.54'	N04°27'47\"	22°31'11\"
C18	620.00'	209.61'	208.62'	105.82'	N02°53'18\"	19°22'16\"
C19	510.00'	239.90'	237.69'	122.21'	N00°54'07\"	26°57'08\"
C20	355.00'	310.65'	300.83'	166.06'	N10°41'26\"	50°08'15\"
C21	245.00'	468.66'	400.40'	347.32'	N19°02'31\"	109°36'04\"
C22	510.00'	310.43'	305.66'	160.19'	S88°43'12\"	34°52'31\"
C23	315.00'	645.31'	538.85'	329.29'	S85°20'26\"	28°07'00\"
C24	705.00'	178.14'	177.67'	89.55'	N73°21'44\"	14°28'39\"
C25	1555.00'	306.88'	306.38'	153.94'	N60°28'12\"	11°18'26\"
C26	320.00'	179.89'	177.53'	92.39'	N70°55'14\"	43°19'49\"
C27	459.00'	310.79'	304.86'	161.82'	S67°37'38\"	38°47'41\"
C28	283.00'	214.02'	208.96'	112.42'	N69°53'43\"	43°19'49\"
C29	545.00'	96.18'	96.06'	48.22'	S83°23'02\"	10°08'41\"
C30	205.00'	314.69'	284.69'	197.81'	N5°41'42\"	87°57'14\"
C31	150.00'	230.26'	208.31'	144.74'	S57°41'42\"	87°57'14\"
C32	600.00'	105.89'	105.78'	53.08'	N83°23'02\"	10°08'41\"
C33	338.00'	255.62'	249.57'	134.27'	S69°53'43\"	43°19'49\"
C34	404.00'	273.55'	268.35'	142.75'	S67°37'38\"	38°47'41\"
C35	375.00'	210.80'	208.04'	108.27'	S70°55'14\"	32°12'30\"
C36	1500.00'	296.02'	295.54'	148.49'	S60°28'12\"	11°18'26\"
C37	650.00'	164.24'	163.80'	82.56'	S73°21'44\"	14°28'39\"
C38	1260.00'	618.32'	612.13'	315.52'	N85°20'26\"	28°07'00\"
C39	565.00'	343.91'	338.63'	177.47'	N88°43'12\"	34°52'31\"
C40	300.00'	573.87'	490.29'	425.29'	S19°02'31\"	109°36'04\"
C41	300.00'	262.52'	254.22'	140.33'	S10°41'26\"	50°08'15\"
C42	565.00'	265.77'	263.33'	135.30'	S00°54'07\"	26°57'08\"
C43	565.00'	191.02'	190.11'	96.43'	S02°53'18\"	19°22'16\"
C44	565.00'	222.07'	220.64'	112.49'	S04°27'47\"	22°31'11\"
C45	565.00'	422.98'	504.51'	281.91'	S10°47'38\"	53°02'05\"
C46	655.00'	421.41'	414.18'	218.29'	S18°52'49\"	36°51'44\"
C47	545.00'	350.64'	344.62'	181.63'	N16°52'48\"	36°51'44\"
C48	600.00'	386.02'	378.40'	199.96'	S16°52'48\"	36°51'44\"

**LINE TABLE**

LINE	BEARING	DISTANCE
L1	N76°18'19\"	110.00'
L2	S13°43'04\"	136.19'
L3	N78°19'41\"	384.54'
L4	N88°26'23\"	216.48'
L5	S48°13'48\"	76.88'
L6	S87°01'29\"	193.21'
L7	S54°48'58\"	122.63'
L8	S68°07'25\"	250.14'
L9	S73°50'33\"	320.44'
L10	S35°45'34\"	258.56'
L11	S14°22'39\"	268.19'
L12	S12°34'26\"	171.17'
L13	S06°47'49\"	169.83'
L14	S15°43'24\"	422.48'
L15	N15°43'24\"	422.48'
L16	N06°47'49\"	169.83'
L17	N12°34'26\"	171.17'
L18	N14°22'39\"	268.19'
L19	N35°45'34\"	258.56'
L20	N73°50'33\"	320.44'
L21	N66°07'25\"	250.14'
L22	N54°48'58\"	122.63'
L23	N87°01'29\"	193.21'
L24	N48°13'48\"	76.88'
L25	S88°26'23\"	216.48'
L26	S78°19'41\"	384.54'
L27	N13°43'04\"	136.19'
L28	S13°43'04\"	136.17'
L29	N78°19'41\"	384.54'
L30	N88°26'23\"	216.48'
L31	S48°13'48\"	76.88'
L32	S87°01'29\"	193.21'
L33	S68°07'25\"	250.14'
L34	S68°07'25\"	250.14'
L35	S73°50'33\"	320.44'
L36	S35°45'34\"	258.56'
L37	S14°22'39\"	268.19'
L38	N12°34'26\"	171.17'
L39	S06°47'49\"	169.83'
L40	S15°43'24\"	422.48'
L41	S00°28'57\"	166.67'
L42	S89°50'41\"	110.00'
L43	N00°28'57\"	166.11'
L44	S00°28'57\"	166.39'



RE INVESTMENT HOLDINGS LLC

RE INVESTMENT HOLDINGS LLC

**Reeve & Associates, Inc.**  
5160 S 1500 N, RIVERDALE, UTAH 84405  
TEL: (801) 621-3100 FAX: (801) 621-2666 www.reeve-assoc.com

**Project Info.**  
Surveyor: T. HATCH  
Designer: N. ANDERSON  
Begin Date: 07-08-19  
Name: ROAD DEDICATION  
BENLOCH RANCH ROAD  
Number: 6922-01  
Revision: 1"=300'

WASATCH COUNTY RECORDER  
ENTRY NO. 490915 DATE 22-07-2020 TIME FEE BOOK 1330  
PAGE 416-417 FOR BY WASATCH COUNTY RECORDER