

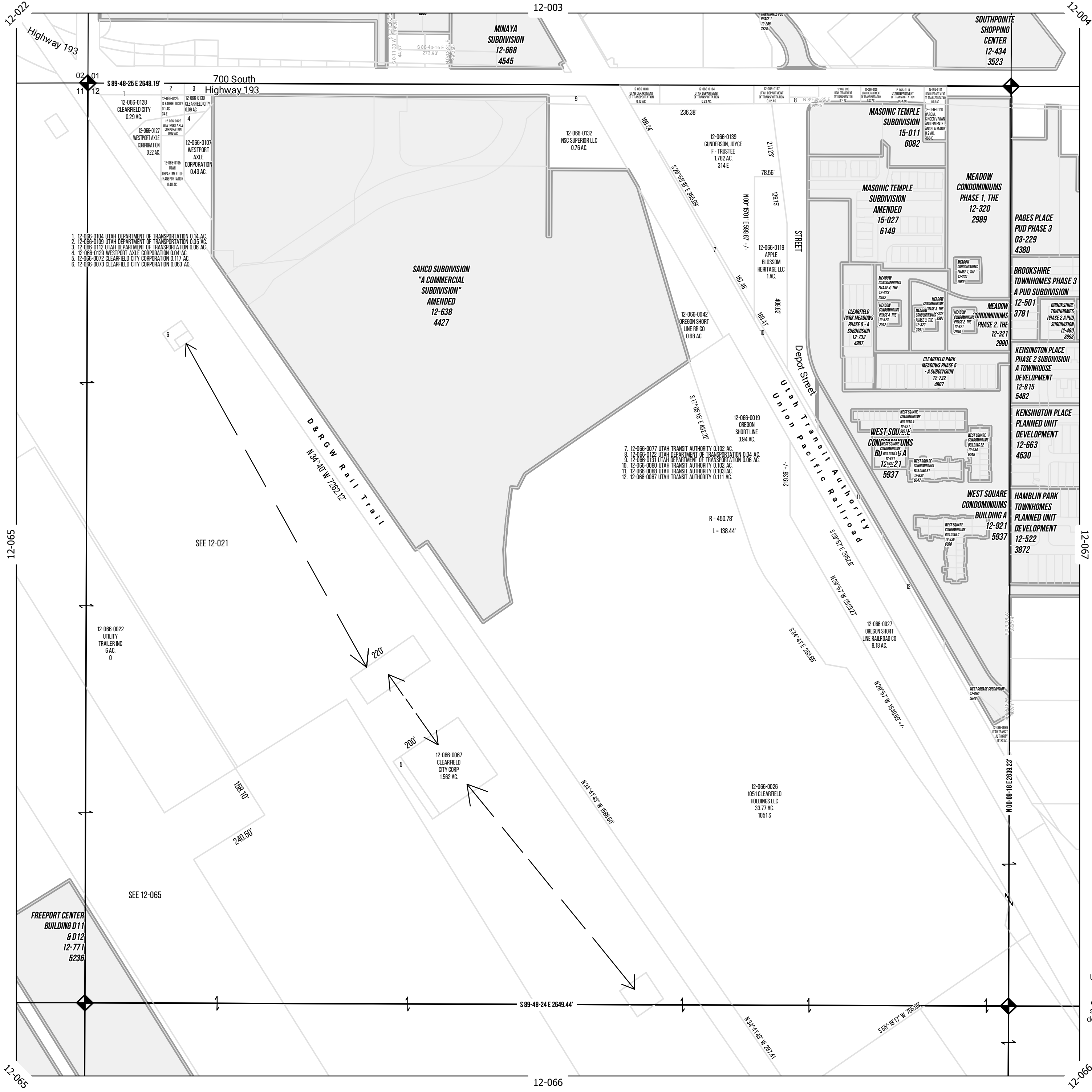
NW Quarter  
Section 12  
4N 2W

SLB & M

Tax ID Prefix

12 - 066

Sheet 1 of 3

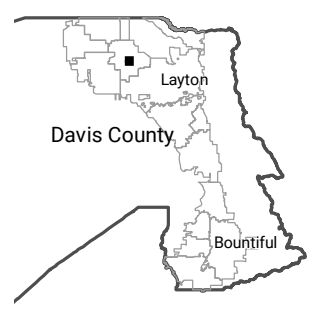


- 1. 12-066-0104 UTAH DEPARTMENT OF TRANSPORTATION 0.14 AC.
- 2. 12-066-0109 UTAH DEPARTMENT OF TRANSPORTATION 0.05 AC.
- 3. 12-066-0112 UTAH DEPARTMENT OF TRANSPORTATION 0.06 AC.
- 4. 12-066-0129 WESTPORT AXLE CORPORATION 0.04 AC.
- 5. 12-066-0072 CLEARFIELD CITY CORPORATION 0.117 AC.
- 6. 12-066-0073 CLEARFIELD CITY CORPORATION 0.063 AC.

- 7. 12-066-0077 UTAH TRANSIT AUTHORITY 0.102 AC.
- 8. 12-066-0122 UTAH DEPARTMENT OF TRANSPORTATION 0.04 AC.
- 9. 12-066-0131 UTAH DEPARTMENT OF TRANSPORTATION 0.06 AC.
- 10. 12-066-0088 UTAH TRANSIT AUTHORITY 0.102 AC.
- 11. 12-066-0088 UTAH TRANSIT AUTHORITY 0.103 AC.
- 12. 12-066-0087 UTAH TRANSIT AUTHORITY 0.111 AC.



1 inch = 200 feet



NOTE: Distance, bearings and radius values are approximate. User needs to refer to the recorded legal descriptions for exact bearing and distances. For cadastral or technical information see the dedicated plat and or legal descriptions in recorded documents.



Last update: 12/20/2019

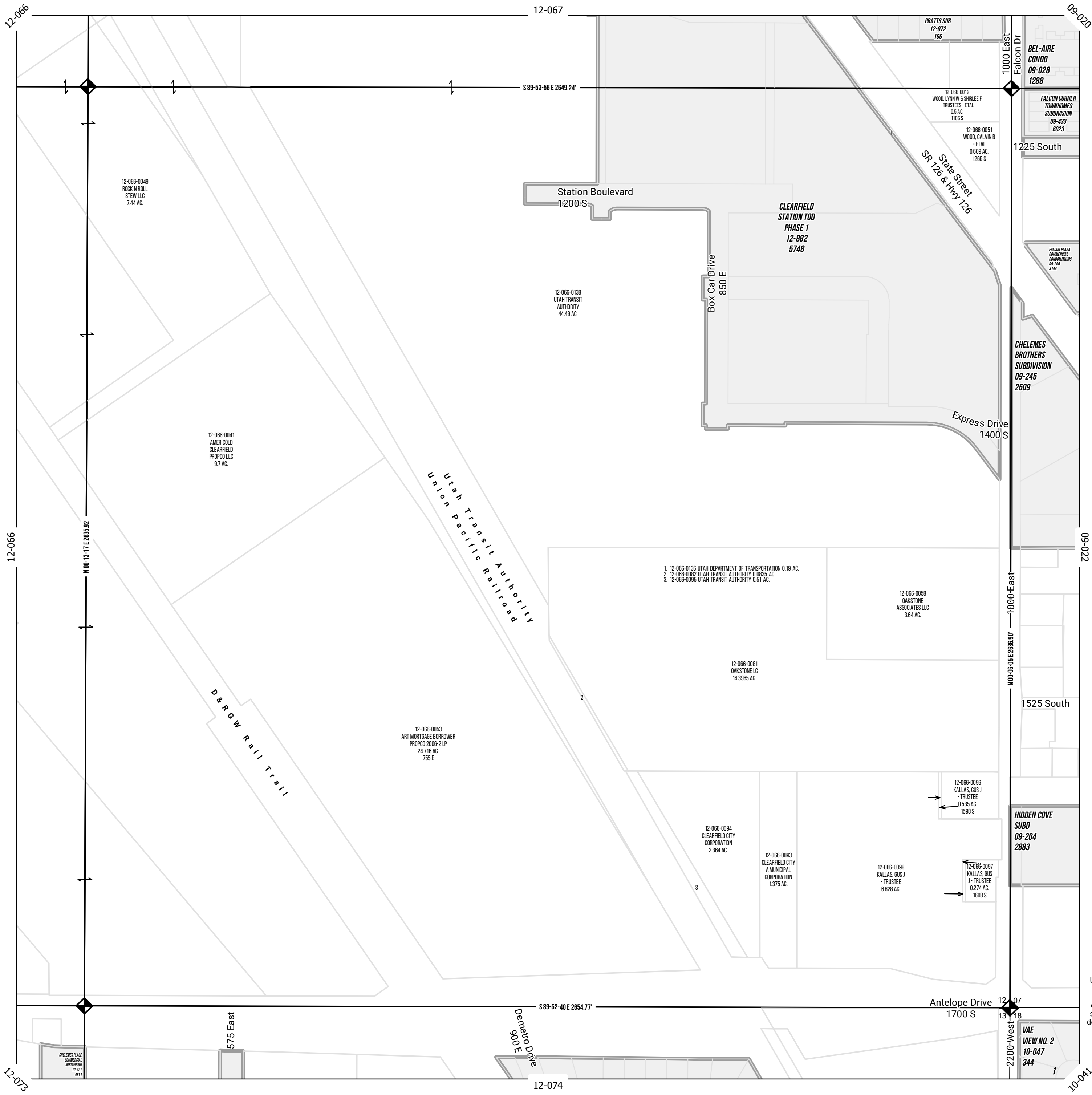
SE Quarter  
Section 12  
4N 2W

SLB & M

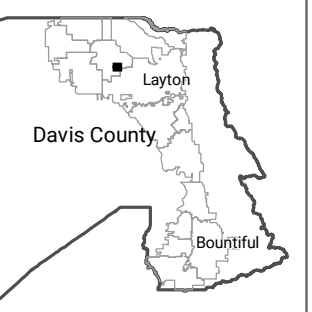
Tax ID Prefix

12 - 066

Sheet 2 of 3



1 inch = 200 feet



NOTE: Distance, bearings and radius values are approximate. User needs to refer to the recorded legal descriptions for exact bearing and distances. For cadastral or technical information see the dedicated plat and/or legal descriptions in recorded documents.



Last update: 12/20/2019

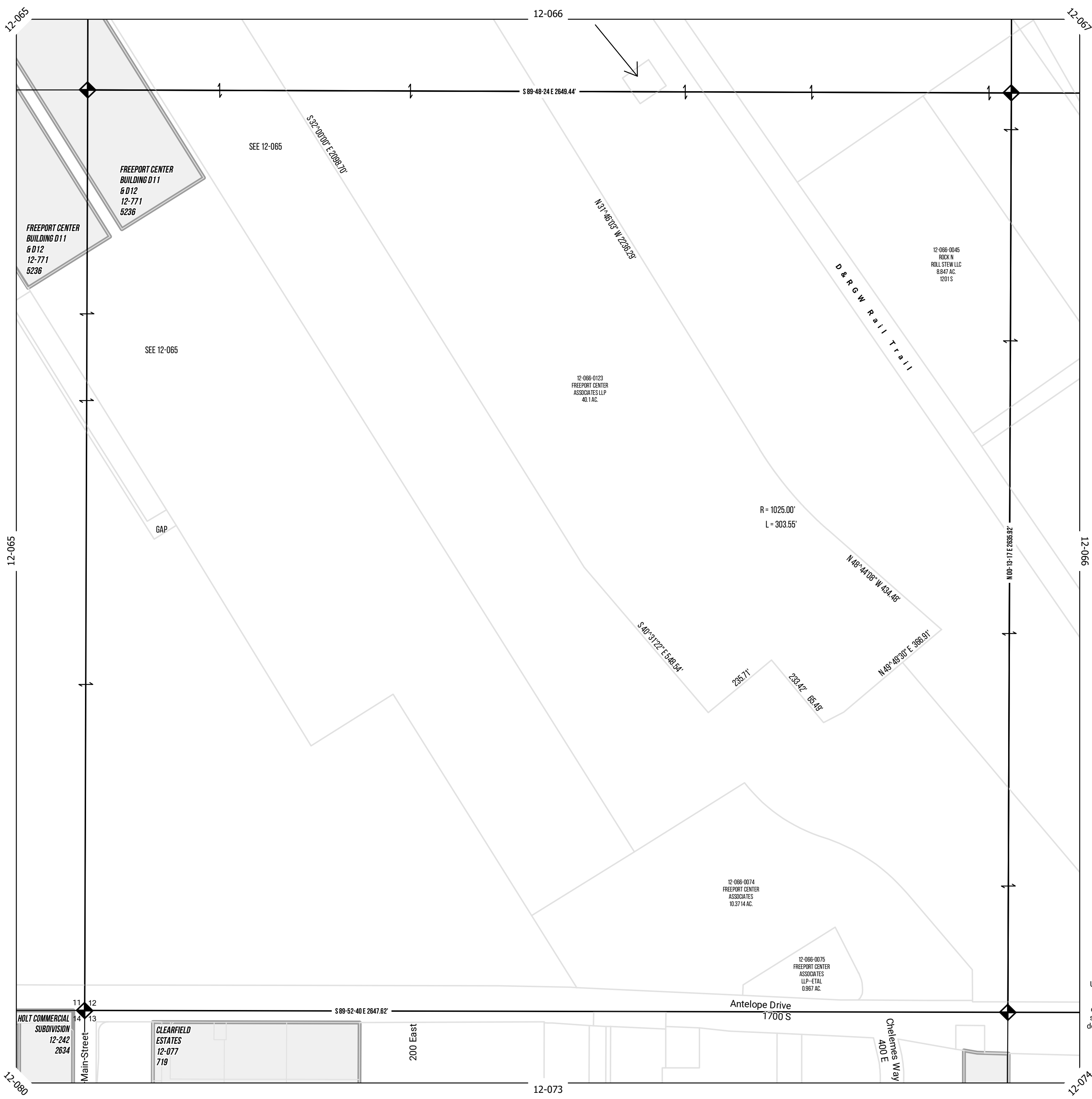
SW Quarter  
Section 12  
4N 2W

SLB & M

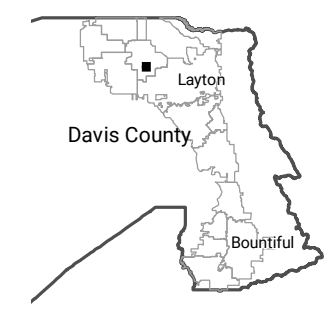
Tax ID Prefix

12 - 066

Sheet 3 of 3



1 inch = 200 feet



NOTE: Distance, bearings and radius values are approximate. User needs to refer to the recorded legal descriptions for exact bearing and distances. For cadastral or technical information see the dedicated plat and/or legal descriptions in recorded documents.



Last update: 12/20/2019