

WELBY JACOB WATER USERS COMPANY  
NOTICE OF INTEREST IN CANAL PROPERTY EASEMENT

PLEASE TAKE NOTICE that the Welby Jacob Water Users Company, a Utah corporation (the "Company"), claims prescriptive easement rights to certain real property in Utah County, Utah, for ownership, use, operation and maintenance of a canal, roadway and related water delivering facilities. Said canal property has been in use for the delivery of water for far in excess of the 20-year prescriptive use period. Said canal has historically been referred to and known as the Provo Reservoir Canal. In 1989 the name was changed to the Jacob Canal. The centerline of said Jacob Canal is as follows:

ENT 22190:2000 PG 1 of 32  
RANDALL A. COVINGTON  
UTAH COUNTY RECORDER  
2000 Mar 21 10:16 am FEE 83.00 BY SS  
RECORDED FOR FRANSON-NOBLE & ASSOCIATES

SEE ATTACHED EXHIBIT A

In certain areas the Company has acquired fee title to the Jacob Canal property or acquired easements by deed or grant. Along the remainder of said Canal alignment, the Company claims prescriptive easement rights that were acquired by continuous uninterrupted adverse use. The prescriptive easement for the Jacob Canal and adjacent roadway encompasses a 49.5-foot wide easement, being 1 rod (16.5 feet) west and 2 rods (33.0 feet) east of said Canal centerline.

The Company claims through prescriptive use the exclusive right to the unobstructed use and occupation of the 49.5 feet wide easement. FENCES ARE NOT PERMITTED WITHIN THE JACOB CANAL PROPERTY. Permanent or temporary structures (other than fences) that encroach within the prescriptive easement property may be permitted by written agreement with the Company where the same will not unreasonably interfere with the safe use, operation and maintenance of the Jacob Canal.

Dated this 9th day of March, 2000.

WELBY JACOB WATER USERS COMPANY  
1156 South State, Suite 202  
Orem, Utah 84058

By Jack McKee  
Jack McKee, President



Section 26, T 4 S, R 1 W

Beginning at a point which is South 89°14'08" West, along the section line, 1260.322 feet from the South Quarter corner of Section 26, Township 4 South, Range 1 West, Salt Lake Base & Meridian; said point also being North 89°14'08" East, along the section line, 1381.673 feet from the Southwest corner of said Section 26; and running thence North 19°32'33" East, 76.236 feet; thence North 20°25'09" East, 51.253 feet; thence North 22°06'26" East, 53.060 feet; thence North 25°19'14" East, 52.656 feet; thence North 15°43'09" East, 54.961 feet; thence North 17°24'54" East, 51.872 feet; thence North 19°52'07" East, 56.248 feet; thence North 20°47'05" East, 125.586 feet; thence North 24°51'11" East, 51.137 feet; thence North 23°26'28" East, 50.421 feet; thence North 17°11'29" East, 50.585 feet; thence North 03°04'43" East, 50.260 feet; thence North 04°42'19" West 53.617 feet; thence North 06°23'59" West, 52.638 feet; thence North 10°27'44" East, 102.898 feet; thence North 06°05'43" East 59.965 feet; thence North 08°13'32" West, 37.174 feet; thence North 16°45'09" West, 112.142 feet; thence North 20°49'38" West, 211.338 feet; thence North 26°09'32" West, 50.973 feet; thence North 30°21'18" West, 234.271 feet; thence North 34°07'41" West, 124.455 feet; thence North 60°45'05" West, 123.275 feet; thence North 65°17'03" West, 52.552 feet.

Section 35, T 4 S, R 1 W

Beginning at a point which is South 89°14'08" West, along the section line, 1260.322 feet from the North Quarter corner of Section 35, Township 4 South, Range 1 West, Salt Lake Base & Meridian; said point also being North 89°14'08" East, along the section line, 1381.673 feet from the Northwest corner of said Section 35; and running thence South 19°32'33" West, 35.124 feet; thence South 21°28'33" West, 124.423 feet; thence South 17°43'29" West, 102.337 feet; thence South 13°19'48" West, 52.058 feet; thence South 17°37'45" West, 47.883 feet; thence South 24°27'24" West, 122.522 feet; thence South 21°51'23" West, 53.997 feet; thence South 24°37'17" West, 51.165 feet; thence South 16°26'22" West, 55.440 feet; thence South 17°44'22" West, 50.661 feet; thence South 23°51'54" West, 50.863 feet; thence South 31°18'55" West, 110.119 feet; thence South 34°03'33" West, 110.636 feet; thence South 38°44'37" West, 106.354 feet; thence South 35°39'11" West, 48.848 feet; thence South 37°48'52" West, 51.232 feet; thence South 39°20'04" West, 108.884 feet; thence South 28°59'49" West, 54.251 feet; thence South 24°51'57" West, 51.357 feet; thence South 32°19'00" West, 47.439 feet; thence South 43°22'40" West, 50.165 feet; thence South 22°35'08" West, 34.153 feet; thence South 05°33'31" West, 24.480 feet; thence South 09°38'20" East, 30.656 feet; thence South 16°04'04" West, 18.776 feet; thence South 31°15'34" West, 41.989 feet; thence South 35°29'19" West, 55.748 feet; thence South 37°40'26" West, 52.529 feet; thence South 45°19'05" West, 54.564 feet; thence South 49°51'29" West, 55.720 feet; thence South 39°56'01" West, 52.239 feet; thence South 18°57'33" West, 52.842 feet; thence South 01°40'02" East, 48.462 feet; thence South 01°21'04" West, 54.769 feet; thence South 14°55'43" West, 53.555 feet; thence South 20°51'26" West, 54.039 feet; thence South 19°07'31" West, 53.801 feet; thence South 32°09'39" West, 46.306 feet; thence South 34°10'46" West, 56.332 feet; thence South 50°13'37" West, 45.797 feet; thence South 70°38'39" West, 27.223 feet; thence South 89°25'27" West, 30.741 feet; thence South 79°59'42" West, 45.695 feet; thence South 39°55'40" West, 25.168 feet; thence South 06°37'42" West, 49.403 feet; thence South 32°57'32" West, 26.703 feet; thence South 72°55'47" West, 26.651 feet; thence South 88°15'27" West, 71.026 feet; thence South 79°53'02" West, 40.457 feet; thence South 21°45'54" West, 33.714 feet; thence South 00°49'39" East, 26.068 feet; thence South 16°52'33" East, 48.217 feet; thence South 09°56'23" East, 42.907 feet; thence South 08°41'07" West, 23.493 feet; thence South 24°23'08" West, 22.756 feet; thence South 26°07'42" West, 24.578 feet; thence South 36°10'38" West, 49.036 feet; thence South 34°18'37" West, 17.938 feet; to a point which is South 00°04'32" West, along the section line, 2438.041 feet from the Northwest corner of Section 35, Township 4 South, Range 1 West, Salt Lake Base & Meridian; said point

also being North  $00^{\circ}04'32''$  East, along the section line, 211.224 feet from  
the West Quarter corner of said Section 35.

Section 34, T 4 S, R 1 W

Beginning at a point which is South 00°04'32" West, along the section line, 2438.041 feet from the Northeast corner of Section 34, Township 4 South, Range 1 West, Salt Lake Base & Meridian; said point also being North 00°04'32" East, along the section line, 211.224 feet from the East Quarter corner of said Section 34; and running thence South 34°18'37" West, 32.842 feet; thence South 14°50'03" West, 30.888 feet; thence South 09°33'31" West, 51.521 feet; thence South 14°35'17" West, 49.496 feet; thence South 11°51'52" West, 106.774 feet; thence South 13°34'25" West, 52.778 feet; thence South 14°51'29" West, 55.289 feet; thence South 22°02'38" West, 53.569 feet; thence South 26°44'27" West, 108.643 feet; thence South 23°48'56" West, 52.080 feet; thence South 14°45'49" West, 51.406 feet; thence South 02°48'50" West, 54.534 feet; thence South 03°46'28" West, 56.473 feet; thence South 00°27'57" East, 53.761 feet; thence South 02°19'22" West, 52.193 feet; thence South 35°31'31" West, 11.343 feet; thence South 47°17'13" West, 75.331 feet; thence South 42°33'56" West, 35.380 feet; thence South 17°46'52" West, 24.615 feet; thence South 12°41'34" East, 87.546 feet; thence South 15°34'10" East, 51.574 feet; thence South 17°39'38" East, 47.126 feet; thence South 08°21'36" East, 13.535 feet; thence South 05°31'29" West, 16.866 feet; thence South 16°53'01" West, 46.268 feet; thence South 05°14'08" West, 49.370 feet; thence South 06°51'24" East, 52.119 feet; thence South 11°00'24" East, 52.183 feet; thence South 08°05'07" East, 54.098 feet; thence South 06°20'58" East, 118.310 feet; thence South 08°43'13" East, 52.935 feet; thence South 00°12'29" West, 42.569 feet; thence South 08°46'50" East, 54.394 feet; thence South 03°37'32" West, 53.973 feet; thence South 07°11'30" West, 99.446 feet; thence South 09°18'23" West, 108.495 feet; thence South 10°44'41" West, 51.321 feet; thence South 09°46'23" West, 104.407 feet; thence South 07°20'37" West, 56.271 feet; thence South 09°29'00" West, 52.930 feet; thence South 09°10'58" West, 132.181 feet; thence South 07°56'07" West, 54.873 feet; thence South 05°34'46" West, 110.649 feet; thence South 04°23'46" West, 56.197 feet; thence South 02°43'01" West, 55.061 feet; thence South 04°44'27" West, 110.926 feet; thence South 03°01'18" West, 55.622 feet; thence South 04°05'15" West, 56.310 feet; thence South 05°50'48" West, 55.795 feet to a point which is South 89°51'17" West, along the section line, 340.236 feet from the Southeast corner of Section 34, Township 4 South, Range 1 West, Salt Lake Base & Meridian; said point also being North 89°51'17" East, along the section line, 2303.972 feet from the South Quarter corner of said Section 34.

Section 3, T. 5 S., R. 1 W.

Beginning at a point which is South 89°51'17" West, along the section line, 340.236 feet from the Northeast corner of Section 3 Township 5 South, Range 1 West, Salt Lake Base & Meridian; said point also being North 89°51'17" East, along the section line, 2303.972 feet from the South Quarter corner of said Section 3; and running thence South 05°50'48" West, 47.946 feet; thence South 13°58'54" West, 106.257 feet; thence South 16°10'25" West, 107.721 feet; thence South 12°13'44" West, 55.151 feet; thence South 09°54'40" West, 60.330 feet; thence South 04°52'05" West, 55.029 feet; thence South 07°25'13" West, 55.365 feet; thence South 01°40'10" West, 57.146 feet; thence South 03°59'04" West, 59.012 feet; thence South 01°16'54" West, 56.319 feet; thence South 05°36'03" West, 56.200 feet; thence South 01°25'01" West, 104.010 feet; thence South 00°40'40" West, 56.952 feet; thence South 01°00'08" East, 57.514 feet; thence South 04°46'14" East, 57.548 feet; thence South 06°45'05" East, 57.385 feet; thence South 13°20'01" East, 115.653 feet; thence South 13°42'41" East, 114.142 feet; thence South 11°55'28" East, 48.701 feet; thence South 20°44'19" East, 109.951 feet; thence South 32°00'42" East, 56.258 feet; thence South 42°36'41" East, 55.788 feet; thence South 30°20'13" East, 16.575 feet; thence South 25°11'01" East, 62.618 feet; thence South 11°31'23" East, 57.398 feet; thence South 07°26'46" East, 51.673 feet; thence South 12°50'53" West, 41.397 feet; thence South 05°26'31" West, 56.488 feet; thence South 03°34'53" West, 136.796 feet; thence South 04°56'58" West, 52.034 feet; thence South 11°40'04" West, 57.235 feet; thence South 16°06'35" West, 53.829 feet; thence South 11°22'21" West, 51.705 feet; thence South 03°23'23" West, 53.514 feet; thence South 00°08'06" West, 55.078 feet; thence South 08°06'07" East, 55.127 feet; thence South 13°16'10" East, 56.621 feet; thence South 06°56'19" East, 57.936 feet; thence South 10°33'18" East, 55.406 feet; thence South 07°52'02" East, 56.200 feet; thence South 06°22'17" East, 57.914 feet; thence South 10°19'40" East, 54.288 feet; thence South 01°08'19" East, 26.871 feet; thence South 05°32'04" East, 18.025 feet; thence South 00°28'53" East, 40.075 feet; thence South 08°26'32" West, 14.028 feet; thence South 00°18'30" West, 17.091 feet; thence South 08°12'30" West, 46.125 feet; thence South 17°57'41" West, 48.854 feet; thence South 12°34'48" West, 58.572 feet; thence South 49°56'52" East, 27.710 feet; thence South 39°22'42" East, 57.576 feet; thence South 10°58'57" East, 95.022 feet; thence South 57°52'17" East, 30.387 feet; thence South 51°11'28" East, 59.256 feet; thence South 36°01'24" East, 50.753 feet; thence South 18°53'50" East, 50.303 feet; thence South 27°50'14" East, 52.502 feet; thence South 47°18'09" East, 47.127 feet; to a point which is South 00°06'08" East, along the section line, 592.866 feet from the East Quarter corner of Section 3, Township 5 South, Range 1 West, Salt Lake Base & Meridian; said point also being North 00°06'08"

West, along the section line, 2059.873 feet from the Southeast corner of  
said Section 3:



Section 2, T 5 S, R 1 W

Beginning at a point which is South 00°06'08" East, along the section line, 592.866 feet from the West Quarter corner of Section 2, Township 5 South, Range 1 West, Salt Lake Base & Meridian; said point also being North 00°06'08" West, along the section line, 2059.873 feet from the Southwest corner of said Section 2; and running thence South 47°18'09" East, 6.931 feet; thence South 52°44'18" East, 49.843 feet; thence South 45°36'33" East, 52.275 feet; thence South 35°17'17" East, 53.737 feet; thence South 37°13'58" East, 55.046 feet; thence South 39°53'46" East, 107.005 feet; thence South 35°16'39" East, 55.677 feet; thence South 39°06'30" East 57.000 feet; thence South 45°21'16" East, 52.832 feet; thence South 38°38'53" East, 161.302 feet; thence South 32°06'29" East, 52.500 feet; thence South 29°23'33" East, 53.682 feet; thence South 23°16'43" East, 90.515 feet; thence South 24°43'38" East, 73.882 feet; thence South 16°34'15" East, 41.303 feet; thence South 09°59'28" East, 52.389 feet; thence South 06°36'30" West, 102.606 feet; thence South 09°26'05" West, 107.305 feet; thence South 08°31'23" West, 53.507 feet; thence South 06°28'19" West, 53.461 feet; thence South 01°30'23" West, 54.032 feet; thence South 01°10'34" East, 52.997 feet; thence South 05°25'03" East, 106.978 feet; thence South 03°35'52" East, 266.644 feet; thence South 09°52'48" East, 49.273 feet; thence South 02°46'25" East, 34.718 feet; thence South 04°32'37" East, 52.520 feet; thence South 06°02'46" East, 52.463 feet; thence South 04°43'01" West, 52.503 feet; thence South 15°10'22" West, 51.732 feet; thence South 04°04'51" West, 52.315 feet; thence South 06°13'42" West, 52.622 feet; thence South 09°25'25" West, 45.096 feet to a point which is North 89°55'02" East, along the section line, 527.956 feet from the Southwest corner of Section 2, Township 5 South, Range 1 West, Salt Lake Base & Meridian; said point also being South 89°55'02" West, along the section line, 2123.824 feet from the South Quarter corner of said Section 2.

Section 11, T 5 S, R 1 W

Beginning at a point which is North 89°55'02" East, along the section line, 527.956 feet from the Northwest corner of Section 11, Township 5 South, Range 1 West, Salt Lake Base & Meridian; said point also being South 89°55'02" West, along the section line, 2123.824 feet from the North Quarter corner of said Section 11; and running thence South 09°25'25" West, 42.338 feet, thence South 11°28'51" West, 52.614 feet; thence South 09°18'20" West, 50.615 feet; thence South 01°58'12" West, 53.435 feet; thence South 09°59'45" West, 52.098 feet; thence South 01°03'17" West, 53.034 feet; thence South 24°23'18" East, 55.444 feet; thence South 72°40'25" East, 17.866 feet; thence South 66°41'56" East, 52.348 feet; thence South 46°50'06" East, 51.967 feet; thence South 25°25'08" East, 42.429 feet; thence North 87°15'58" East, 50.070 feet; thence South 85°11'01" East, 50.251 feet; thence South 72°29'15" East, 51.879 feet; thence South 61°47'09" East, 49.553 feet; thence South 39°59'39" East, 54.455 feet; thence South 37°55'57" East, 52.309 feet; thence South 23°10'38" East, 51.937 feet; thence South 15°58'45" East, 52.159 feet; thence South 09°23'40" East, 51.358 feet; thence South 01°45'40" West, 54.608 feet; thence South 11°49'54" West, 106.543 feet; thence South 09°18'28" West, 51.578 feet; thence South 14°04'03" West, 53.084 feet; thence South 17°41'41" West, 53.146 feet; thence South 26°11'42" West, 51.459 feet; thence South 37°24'32" West, 53.076 feet; thence South 36°56'51" West, 105.586 feet; thence South 39°55'43" West, 51.604 feet; thence South 48°16'08" West, 52.412 feet; thence South 57°42'44" West, 52.116 feet; thence South 54°48'19" West, 53.317 feet; thence South 52°53'56" West, 52.846 feet; thence South 50°16'56" West, 51.695 feet; thence South 58°20'25" West, 104.265 feet; thence South 63°21'06" West, 52.530 feet; thence South 62°13'06" West, 105.571 feet; thence South 63°07'08" West, 53.176 feet; thence South 64°22'59" West, 104.345 feet; thence South 57°54'49" West, 50.775 feet; thence South 60°16'46" West, 108.180 feet; thence South 55°40'56" West, 32.021 feet to a point which is South 00°34'14" West, along the section line, 1700.982 feet from the Northwest corner of Section 11, Township 5 South, Range 1 West, Salt Lake Base & Meridian; said point also being North 00°34'14" East, along the section line, 965.239 feet from the West Quarter corner of said Section 11.

Section 10, T 5 S, R 1 W

Beginning at a point which is South 00°34'14" West, along the section line, 1700.982 feet from the Northeast corner of Section 10, Township 5 South, Range 1 West, Salt Lake Base & Meridian; said point also being North 00°34'14" East, along the section line, 965.239 feet from the East Quarter corner of said Section 10; and running thence South 55°40'56" West, 19.693 feet; thence South 51°54'18" West, 15.800 feet; thence South 55°55'51" West, 34.775 feet; thence South 53°20'23" West, 10.300 feet; thence South 55°19'50" West, 153.096 feet; thence South 53°07'10" West, 51.497 feet; thence South 56°09'01" West, 53.182 feet; thence South 53°13'15" West, 158.871 feet; thence South 56°45'09" West, 52.842 feet; thence South 53°12'00" West, 104.570 feet; thence South 51°30'48" West, 51.659 feet; thence South 55°28'30" West, 50.556 feet; thence South 55°16'34" West, 103.342 feet; thence South 53°45'09" West, 96.525 feet; thence South 56°19'32" West, 50.330 feet; thence South 54°45'04" West, 53.119 feet; thence South 57°17'02" West, 52.961 feet; thence South 55°43'17" West, 107.249 feet; thence South 54°22'24" West, 53.295 feet; thence South 50°38'24" West, 53.842 feet; thence South 55°15'56" West, 53.175 feet; thence South 50°13'42" West, 51.722 feet; thence South 47°46'05" West, 52.158 feet; thence South 50°02'46" West, 104.773 feet; thence South 46°47'26" West, 62.515 feet; thence South 50°19'28" West, 51.998 feet; thence South 46°13'23" West, 51.574 feet; thence South 50°24'50" West, 54.168 feet; thence South 46°53'54" West, 48.062 feet; thence South 49°17'01" West, 48.574 feet; thence South 44°49'49" West, 50.406 feet; thence South 51°17'20" West, 48.089 feet; thence South 53°50'47" West, 51.033 feet; thence South 41°08'53" West, 33.750 feet; thence South 45°59'49" West, 51.132 feet; thence South 50°54'39" West, 48.401 feet; thence South 48°01'00" West, 47.889 feet; thence South 51°01'11" West, 51.577 feet; thence South 40°33'19" West, 52.394 feet; thence South 34°31'37" West, 49.798 feet; thence South 35°50'36" West, 53.280 feet; thence South 23°43'40" West, 43.283 feet; thence South 63°35'44" East, 2.625 feet; thence South 29°03'28" West, 50.742 feet; thence South 37°42'53" West, 50.897 feet; thence South 31°42'27" West, 106.364 feet; thence South 32°36'13" West, 52.719 feet; thence South 29°56'45" West, 54.183 feet; thence South 27°53'52" West, 54.439 feet; thence South 14°42'27" West, 38.125 feet; thence South 12°57'02" West, 100.361 feet; thence South 10°58'42" West, 52.794 feet; thence South 19°55'28" West, 50.856 feet; thence South 30°40'39" West, 49.284 feet; thence South 35°41'54" West, 53.019 feet; thence South 32°21'11" West, 105.636 feet; thence South 33°15'42" West, 49.442 feet; thence South 25°09'16" West, 50.943 feet; thence South 09°41'14" West, 104.661 feet; thence South 05°35'42" West, 52.417 feet; thence South 03°48'17" West, 105.558 feet; thence South 07°03'38" West, 104.949 feet; thence South 02°48'23" West, 49.985 feet; thence South 12°09'43" West, 49.683 feet; thence South

24°30'11" West, 50.218 feet; thence South 32°54'38" West, 93.878 feet; thence South 25°38'24" West, 53.881 feet; thence South 16°24'46" West, 53.964 feet; thence South 00°34'49" West, 95.999 feet; thence South 05°56'14" West, 52.459 feet; thence South 24°22'24" West, 35.758 feet; thence South 41°44'25" West, 49.073 feet; thence South 50°17'33" West, 40.390 feet; thence South 54°34'13" West, 51.494 feet; thence South 53°24'11" West, 148.032 feet; thence South 64°34'34" West, 51.595 feet; thence South 69°48'48" West, 50.316 feet; thence South 60°54'25" West, 52.706 feet; thence South 66°18'15" West, 97.371 feet; thence South 57°31'44" West, 53.795 feet; thence South 52°14'56" West, 25.471 feet; thence South 34°08'29" West, 49.767 feet; thence South 10°50'32" West, 16.710 feet to a point which is South 89°52'08" East, along the section line, 2256.380 feet from the Southwest corner of Section 10, Township 5 South, Range 1 West, Salt Lake Base & Meridian; said point also being North 89°52'08" West, along the section line, 399.460 feet from the South Quarter corner of said Section 10.

Section 15, T 5 S, R 1 W

Beginning at a point which is South 89°52'08" East, along the section line, 2256.380 feet from the Northwest corner of Section 15, Township 5 South, Range 1 West, Salt Lake Base & Meridian; said point also being North 89°52'08" West, along the section line, 399.460 feet from the North Quarter corner of said Section 15; and running thence South 10°50'32" West, 2.819 feet; thence South 25°50'14" West, 24.012 feet; thence South 03°13'09" West, 4.718 feet; thence South 33°48'02" West, 10.248 feet; thence South 27°26'59" West, 46.273 feet; thence South 32°19'54" West, 49.997 feet; thence South 27°41'25" West, 51.944 feet; thence South 30°30'13" West, 49.511 feet; thence South 28°54'29" West, 52.802 feet; thence South 27°41'12" West, 53.643 feet; thence South 30°16'13" West, 49.388 feet; thence South 39°56'38" West, 46.990 feet; thence South 43°36'50" West, 21.365 feet; thence South 53°33'27" West, 48.556 feet; thence South 46°32'33" West, 83.449 feet; thence South 38°34'22" West, 42.815 feet; thence South 58°28'39" West, 22.528 feet; thence South 46°44'50" West, 46.531 feet; thence South 42°18'42" West, 46.770 feet; thence South 49°15'25" West, 53.523 feet; thence South 45°36'07" West, 46.373 feet; thence South 43°50'32" West, 47.129 feet; thence South 51°54'42" West, 50.580 feet; thence South 47°01'44" West, 50.095 feet; thence South 48°37'50" West, 29.552 feet; thence South 51°31'00" West, 29.719 feet; thence South 45°06'38" West, 49.960 feet; thence South 40°47'42" West, 45.857 feet; thence South 16°42'28" West, 110.079 feet; thence South 08°28'10" West, 51.722 feet; thence South 14°24'41" West, 49.136 feet; thence South 15°51'40" West, 99.162 feet; thence South 07°44'24" West, 53.090 feet; thence South 14°34'38" West, 50.406 feet; thence South 12°38'02" West, 102.179 feet; thence South 15°35'05" West, 31.400 feet; thence South 26°53'10" West, 50.841 feet; thence South 31°17'29" West, 49.444 feet; thence South 23°47'19" West, 19.263 feet; thence South 34°19'14" West, 18.602 feet; thence South 03°40'01" West, 111.886 feet; thence South 69°40'06" East, 53.987 feet; thence South 65°10'46" East, 51.568 feet; thence South 52°52'10" East, 11.932 feet; thence South 29°05'54" East, 148.300 feet; thence South 28°18'37" East, 108.481 feet; thence South 27°11'36" East, 52.223 feet; thence South 25°35'51" East, 51.612 feet; thence South 29°20'42" East, 53.512 feet; thence South 36°35'59" East, 27.714 feet; thence South 50°50'03" East, 52.429 feet; thence South 54°38'41" East, 49.879 feet; thence South 47°06'52" East, 51.836 feet; thence South 41°56'40" East, 51.593 feet; thence South 35°05'54" East, 53.027 feet; thence South 25°41'10" East, 40.929 feet; thence South 21°08'56" East, 52.706 feet; thence South 30°16'54" East, 42.172 feet; thence South 12°53'30" East, 41.924 feet; thence South 13°15'21" West, 33.010 feet; thence South 27°35'46" West, 100.116 feet; thence South 29°12'07" West, 51.185 feet; thence South 26°17'58" West, 51.130 feet; thence South 28°51'40" West, 29.375 feet;

thence South 10°53'06" West, 43.990 feet; thence South 03°53'18" East, 7.289 feet; thence South 09°30'53" West, 50.431 feet; thence South 20°57'42" East, 18.273 feet; thence South 56°35'54" East, 10.426 feet; thence South 72°17'36" East, 26.986 feet; thence South 23°18'17" West, 3.418 feet; thence South 35°19'52" East, 8.505 feet; thence South 15°09'37" East, 60.239 feet; thence South 37°44'36" East, 39.218 feet; thence South 11°49'29" West, 47.558 feet; thence South 25°13'30" East, 0.940 feet; thence South 09°06'12" East, 94.673 feet; thence South 05°43'00" East, 49.646 feet; thence South 15°08'11" West, 47.297 feet; thence South 25°41'19" West, 50.778 feet; thence South 34°07'01" West, 45.272 feet; thence South 38°24'44" West, 164.531 feet; thence South 30°42'22" West, 48.955 feet; thence South 21°50'24" West, 51.662 feet; thence South 27°23'37" West, 53.253 feet; thence South 25°37'43" West, 52.686 feet; thence South 27°34'41" West, 53.783 feet; thence South 33°32'44" West, 55.178 feet; thence South 39°04'16" West, 74.666 feet; thence South 30°42'51" West, 52.131 feet; thence South 20°30'27" West, 51.974 feet; thence South 18°16'30" West, 53.097 feet; thence South 16°51'50" West, 50.280 feet; thence South 17°54'28" West, 110.731 feet; thence South 17°15'05" West, 111.798 feet; thence South 18°35'21" West, 119.835 feet; thence South 16°58'59" West, 109.833 feet; thence South 18°35'07" West, 92.870 feet; thence South 16°11'19" West, 47.547 feet; thence South 10°48'57" West, 85.591 feet; thence South 00°28'45" East, 49.303 feet; thence South 05°47'25" East, 49.162 feet; thence South 07°22'51" East, 52.227 feet; thence South 11°06'37" East, 47.288 feet; thence South 04°06'16" West, 79.240 feet; thence South 07°29'11" West, 39.792 feet; thence South 12°37'32" West, 29.717 feet; thence South 05°45'04" West, 87.025 feet; thence South 07°34'13" West, 141.228 feet; thence South 04°53'53" West, 47.644 feet; thence South 11°18'33" West, 49.300 feet; thence South 06°14'45" West, 90.412 feet; thence South 08°27'02" West, 52.395 feet to a point which is North 89°54'18" East, along the section line, 1197.194 feet from the Southwest corner of Section 15, Township 5 South, Range 1 West, Salt Lake Base & Meridian; said point also being South 89°54'18" West, along the section line, 1451.976 feet from the South Quarter corner of said Section 15.

Section 22, T 5 S, R 1 W

Beginning at a point which is North 89°54'18" East, along the section line, 1197.194 feet from the Northwest corner of Section 22, Township 5 South, Range 1 West, Salt Lake Base & Meridian; said point also being South 89°54'18" West, along the section line, 1451.976 feet from the North Quarter corner of said Section 22; and running thence South 08°27'02" West, 93.631 feet; thence South 06°20'30" West, 45.176 feet; thence South 09°27'01" West, 45.366 feet; thence South 11°20'12" West, 43.920 feet; thence South 26°09'50" West, 47.905 feet; thence South 37°54'20" West, 55.575 feet; thence South 33°46'07" West, 85.376 feet; thence South 30°28'13" West, 114.187 feet; thence South 17°42'00" West, 183.366 feet; thence South 43°16'05" West, 66.099 feet; thence South 55°15'10" West, 36.763 feet; thence South 25°18'17" West, 24.340 feet; thence South 17°27'51" East, 40.378 feet; thence South 56°10'52" East, 57.592 feet; thence South 37°53'29" East, 26.681 feet; thence South 11°41'31" East, 27.342 feet; thence South 00°27'02" East, 52.153 feet; thence South 13°07'09" West, 33.312 feet; thence South 18°17'09" West, 106.358 feet; thence South 22°38'21" West, 72.417 feet; thence South 28°48'16" West, 60.057 feet; thence South 34°07'10" West, 74.317 feet; thence South 15°14'20" West, 78.750 feet; thence South 01°35'03" West, 165.838 feet; thence South 05°47'57" West, 71.831 feet; thence South 00°50'45" West, 53.527 feet; thence South 03°53'53" West, 112.730 feet; thence South 01°14'21" East, 84.620 feet; thence South 09°19'50" East, 83.556 feet; thence South 14°36'04" East, 312.027 feet; thence South 15°46'17" East, 110.483 feet; thence South 09°12'44" West, 57.198 feet; thence South 22°16'40" West, 43.982 feet; thence South 10°57'29" West, 33.145 feet; thence South 00°47'20" East, 82.028 feet; thence South 06°52'53" East, 100.853 feet; thence South 12°11'21" East, 7.830 feet; thence South 04°01'54" East, 95.271 feet; thence South 07°35'21" East, 86.695 feet; thence South 19°29'00" East, 57.380 feet; thence South 28°41'27" East, 61.048 feet; thence South 24°38'08" East, 77.332 feet; thence South 23°43'14" East, 99.575 feet; thence South 25°51'04" East, 79.642 feet; thence South 12°37'51" East, 39.165 feet; thence South 02°46'08" East, 89.054 feet; thence South 39°51'35" East, 47.043 feet; thence South 35°07'10" East, 42.930 feet; thence South 01°53'33" West, 57.564 feet; thence South 15°17'18" West, 89.988 feet; thence South 11°20'22" West, 103.108 feet; thence South 18°53'51" West, 101.334 feet; thence South 31°41'57" West, 108.764 feet; thence South 28°01'29" West, 102.019 feet; thence South 30°09'17" West, 217.477 feet; thence South 25°30'06" West, 50.776 feet; thence South 31°15'56" West, 103.246 feet; thence South 29°16'43" West, 317.726 feet; thence South 23°52'57" West, 50.201 feet; thence South 36°53'28" West, 47.734 feet; thence South 30°09'00" West, 10.161 feet; thence South 26°47'52" West, 115.845 feet; thence South 13°15'49" West, 80.665 feet; thence South 08°01'06" West, 164.727 feet;

thence South  $21^{\circ}30'52''$  West, 63.713 feet; thence South  $36^{\circ}34'05''$  West, 81.464 feet; thence South  $31^{\circ}04'40''$  West, 167.145 feet; thence South  $24^{\circ}59'04''$  West, 161.143 feet to a point which is North  $89^{\circ}32'19''$  East, along the section line, 248.902 feet from the Southwest corner of Section 22, Township 5 South, Range 1 West, Salt Lake Base & Meridian; said point also being South  $89^{\circ}32'19''$  West, along the section line, 2419.469 feet from the South Quarter of said Section 22.



Section 27, T 5 S, R 1 W

Beginning at a point which is North  $89^{\circ}32'19''$  East, along the section line, 248.902 feet from the Northwest corner of Section 27, Township 5 South, Range 1 West, Salt Lake Base & Meridian; said point also being South  $89^{\circ}32'19''$  West, along the section line, 2419.469 feet from the North Quarter corner of said Section 27; and running thence South  $23^{\circ}30'44''$  West, 57.844 feet; thence South  $30^{\circ}04'06''$  East, 0.578 feet; thence South  $21^{\circ}23'19''$  West, 36.698 feet; thence South  $25^{\circ}09'48''$  West, 167.827 feet; thence South  $22^{\circ}47'32''$  West, 67.645 feet; thence South  $24^{\circ}01'24''$  West, 157.265 feet; thence South  $27^{\circ}06'10''$  West, 88.342 feet; thence South  $40^{\circ}28'49''$  West, 18.703 feet to a point to which is South  $00^{\circ}08'03''$  West, along the section line, 536.481 feet from the Northwest corner of Section 27, Township 5 South, Range 1 West, Salt Lake Base & Meridian; said point also being North  $00^{\circ}08'03''$  East, along the section line, 2111.208 feet from the West Quarter corner of said Section 27.

Section 28, T 5 S, R 1 W

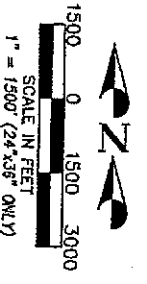
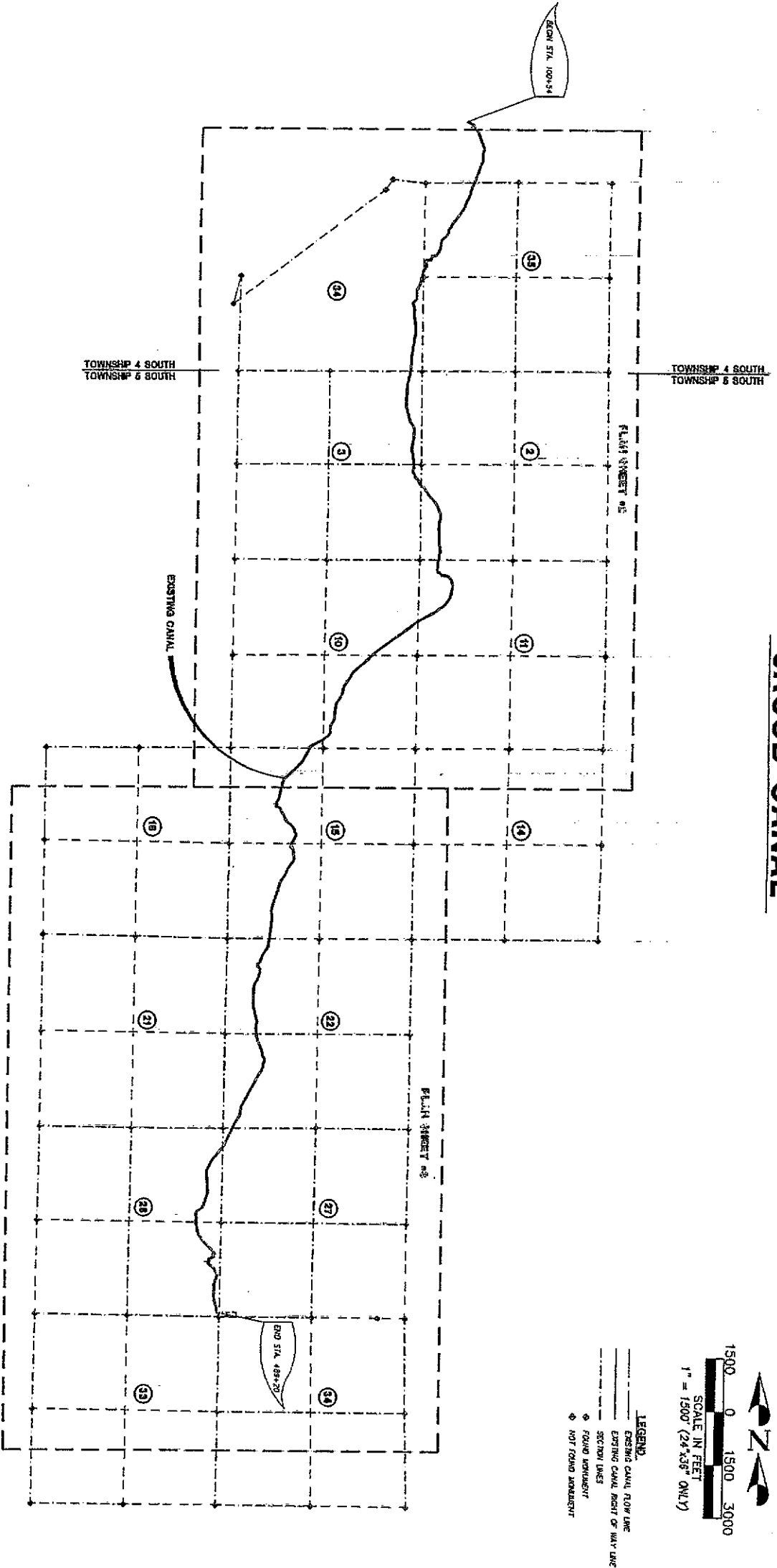
Beginning at a point which is South 00°08'03" West, along the section line, 536.481 feet from the Northeast corner of Section 28, Township 5 South, Range 1 West, Salt Lake Base & Meridian; said point also being North 00°08'03" East, along the section line, 2111.208 feet from the East Quarter corner of said Section 28; and running thence South 40°28'49" West, 70.486 feet; thence South 44°21'58" West, 82.344 feet; thence South 42°37'27" West, 91.315 feet; thence South 40°01'28" West, 87.060 feet; thence South 44°47'31" West, 89.386 feet; thence South 34°31'31" West, 86.736 feet; thence South 24°40'16" West, 91.417 feet; thence South 27°44'34" West, 187.898 feet; thence South 02°13'45" West, 81.060 feet; thence South 04°22'05" East, 124.079 feet; thence South 02°56'00" East, 87.588 feet; thence South 04°48'51" East, 80.046 feet; thence South 03°19'23" East, 87.769 feet; thence South 01°37'36" East, 80.550 feet; thence South 03°09'33" East, 94.058 feet; thence South 15°49'09" West, 83.964 feet; thence South 19°48'55" West, 84.264 feet; thence South 16°54'10" West, 92.376 feet; thence South 19°24'19" West, 89.580 feet; thence South 22°26'06" West, 85.866 feet; thence South 53°53'57" West, 89.115 feet; thence South 57°02'59" West, 87.961 feet; thence South 28°12'07" West, 79.281 feet; thence South 05°44'14" East, 154.564 feet; thence South 00°53'23" East, 91.960 feet; thence South 05°57'54" East, 98.219 feet; thence South 11°16'10" East, 175.619 feet; thence South 19°52'44" East, 99.252 feet; thence South 34°31'12" East, 101.813 feet; thence South 31°24'46" East, 87.858 feet; thence South 39°08'20" East, 98.018 feet; thence South 47°55'09" East, 101.678 feet; thence South 45°56'00" East, 100.081 feet; thence South 44°15'23" East, 96.403 feet; thence South 40°59'47" East, 88.205 feet; thence South 42°43'03" West, 5.393 feet; thence South 38°00'59" East, 39.296 feet; thence South 61°59'54" West, 53.286 feet; thence South 23°11'30" East, 65.636 feet; thence South 70°01'44" West, 77.665 feet; thence South 38°11'37" West, 20.212 feet; thence South 81°27'16" West, 15.729 feet; thence South 73°43'53" West, 36.280 feet; thence South 15°16'04" West, 77.516 feet; thence South 08°41'27" East, 60.821 feet; thence South 17°08'13" East, 14.773 feet; thence South 44°19'42" East, 34.936 feet; thence South 52°59'03" East, 87.508 feet; thence South 50°49'00" East, 68.142 feet; thence South 29°18'21" East, 25.217 feet; thence South 26°25'36" East, 92.350 feet; thence South 30°39'43" East, 84.756 feet; thence South 19°25'35" East, 32.040 feet; thence South 18°27'11" West, 44.473 feet; thence South 22°54'44" West, 103.695 feet; thence South 20°19'16" West, 95.410 feet; thence South 01°19'20" West, 61.611 feet; thence South 01°20'07" East, 331.392 feet; thence South 02°19'09" East, 105.464 feet; thence South 19°32'06" East, 108.547 feet; thence South 14°35'47" East, 115.286 feet; thence South 11°32'09" East, 86.126 feet; thence South 39°04'13" East, 6.202 feet; thence South 61°23'10" East, 33.528 feet to a

point which is North  $00^{\circ}35'23''$  East, along the section line, 107.931 feet and North  $89^{\circ}24'37''$  West, 38.841 feet from the Southeast corner of Section 28, Township 5 South, Range 1 West, Salt Lake Base & Meridian; said point also being South  $89^{\circ}20'41''$  East, along the section line, 2613.825 feet and North  $00^{\circ}39'19''$  East, 107.887 feet from the South Quarter corner of said Section 28.

Section 28, T 5 S, R 1 W

Beginning at a point on the center line of the Jacob Canal; said point being South  $00^{\circ}35'23''$  West, along the section line, 975.625 feet and North  $89^{\circ}24'37''$  West, 205.650 feet from the East Quarter corner of said Section 28, Township 5 South, Range 1 West, Salt Lake Base & Meridian; and running thence along said center line of the canal the following two (2) calls: South  $13^{\circ}57'07''$  West, 24.299 feet; thence South  $30^{\circ}08'56''$  West, 27.555 feet to a point which is North  $00^{\circ}35'23''$  East, along the section line, 1635.726 feet and North  $89^{\circ}24'37''$  West, 224.859 feet from the Southeast corner of said Section 28.

JACOB CANAL



**LEGEND**  
 ——— EXISTING CANAL FLOW LINE  
 ——— EXISTING CANAL RIGHT OF WAY LINE  
 - - - - SECTION LINES  
 ⊕ FOUND MARIANISM  
 ⊖ NOT FOUND MARIANISM

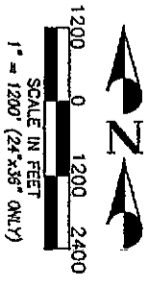
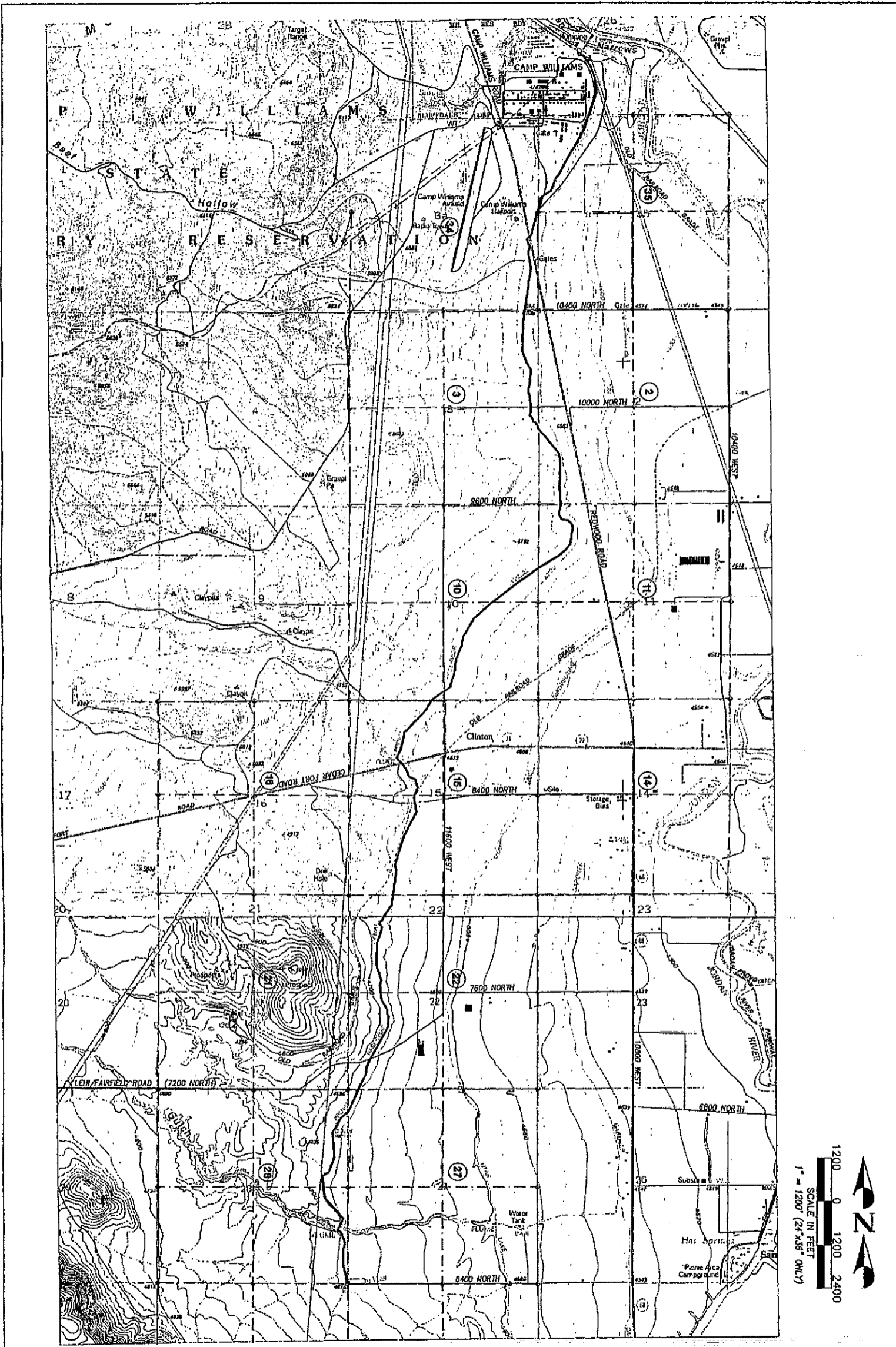
**NARRATIVE**  
 THE PURPOSE OF THIS SURVEY WAS TO RE-CONSTRUCT THE COURSE OF THE JACOB CANAL TO PHYSICAL SECTION CORNER LOCATIONS AND PRODUCE A CENTERLINE DESIGNATION FROM THIS DATA. THE RIGHT OF WAY OF THE CANAL WAS ALSO ESTABLISHED AND SHOWN AS 1 FOOT (16.5 FT) WEST AND 2 FEET (31 FT) EAST OF THE NEW CENTERLINE.  
 ALL IMPROVEMENTS, CROSSINGS, AND POSSIBLE FENCE LINE ENCROACHMENTS WERE FIELD LOCATED AND SHOWN IN RELATION TO THE CANAL AND RIGHT OF WAY.

**SURVEYOR'S CERTIFICATE**  
 I, DENROCK S. SMITH, do hereby certify that I am a Professional Land Surveyor as provided by Utah State Law and that I had personally supervised and checked the work of the assistants who were employed under my direct supervision and the results of their survey are depicted hereon.

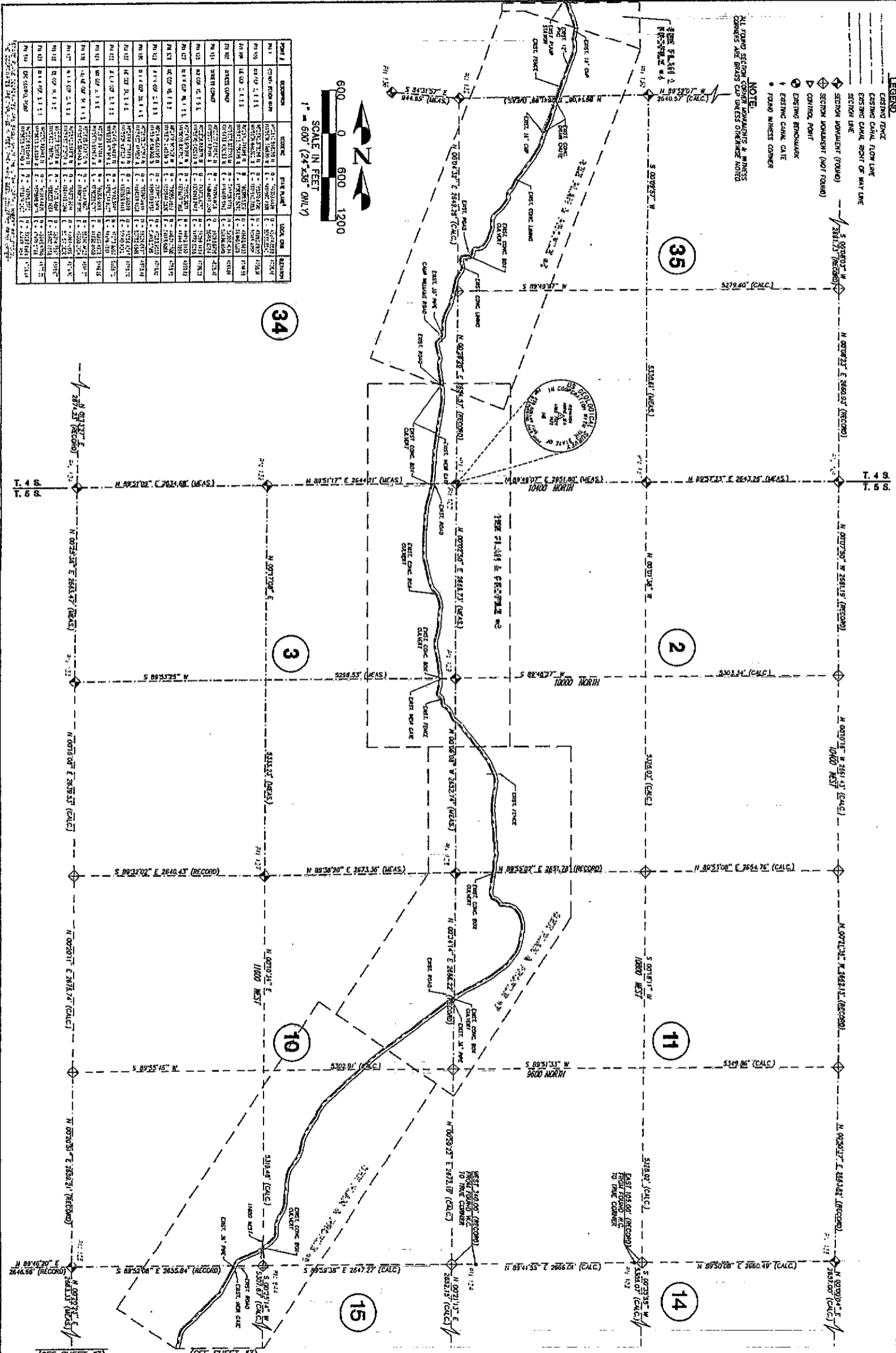
DENROCK S. SMITH \_\_\_\_\_ DATE \_\_\_\_\_

INDEX OF SHEETS	
1	TITLE SHEET & OVERALL PLAN
1A	OVERALL PLAN W/ USGS MAP
2	PLAN SHEET - TOWNSHIPS 4 & 5 SOUTH
3	PLAN SHEET - TOWNSHIP 5 SOUTH
4-11	CANAL PLAN & PROFILES

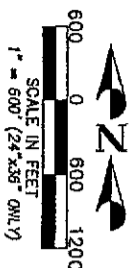
<b>JACOB CANAL</b>		<b>PENTACORE EPG</b> 76 EAST 6780 SOUTH • MOJAVE UT 84047 PH (801) 562-2521 • FAX (801) 562-2551			
<b>OVERALL PLAN SHEET</b>		<b>DESIGN</b>	<b>DRAFT</b>	<b>SURVEY</b>	<b>QUANT.</b>
BY: _____	BY: <u>BDJ</u>	BY: <u>KPG-CREW</u>	BY: _____	NO DATE	REMARKS
DATE: <u>FEBRUARY 11, 2000</u>	CHECK: <u>DRS/DSS</u>	DATE: <u>NOV/DEC - 1999</u>	CHECK: _____	NO DATE	REVISIONS
PROJECT NUMBER: <u>95077</u>		FILE NAME: <u>N:\95077\PLAN-OV</u>		DATE: <u>FEBRUARY 11, 2000</u>	
UTAH COUNTY: _____		SHEET NO: <u>1</u>		ORIGINAL SUBMISSION FOR AUTHORIZATION	



SHEET NO. <b>1A</b> UTAH COUNTY	<b>JACOB CANAL</b>		<b>PENTACORE EPG</b> 76 EAST 8700 SOUTH • IRVING, UT 84017 PH: (801) 362-2521 • FAX: (801) 362-2531								
	OVERALL PLAN W/ USGS MAP		DESIGN	DRAFT	SURVEY	QUANT.					
	99077 PROJECT NUMBER	R. 199077 QUAD JOB NAME	JANUARY 14, 1999 DATE	BY _____ DRAWN	BY _____ CHECK	BY _____ DATE	BY _____ CHECK	NO. DATE	BY DATE	DATE	REVISIONS
							ORIGINAL SUBMISSION FOR AUTHORIZATION				
							REVISIONS				



- LEGEND**
- EXISTING CANAL, LOW LINE
  - EXISTING CANAL, HIGH LINE
  - SECTION LINE
  - ◇ SECTION MONUMENT (ROUND)
  - ◇ SECTION MONUMENT (NOT ROUND)
  - ◇ CONTROL POINT
  - ◇ EXISTING BENCHMARK
  - ◇ EXISTING CANAL GATE
  - POINT WITNESS CORNER
- NOTE**
- ALL FOUND SECTION CORNER MONUMENTS & WITNESS CORNERS ARE BEING RELOCATED TO THE NEW CANAL CENTERLINE NOTED.



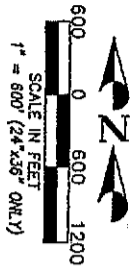
POINT	DESCRIPTION	COORDINATES	TYPE	LOCAL DATA	REMARKS
PM 1	SECTION MONUMENT	N 89°51'17" E 2644.91'	ROUND	2644.91	SECTION CORNER
PM 2	SECTION MONUMENT	N 89°51'17" E 2644.91'	ROUND	2644.91	SECTION CORNER
PM 3	SECTION MONUMENT	N 89°51'17" E 2644.91'	ROUND	2644.91	SECTION CORNER
PM 4	SECTION MONUMENT	N 89°51'17" E 2644.91'	ROUND	2644.91	SECTION CORNER
PM 5	SECTION MONUMENT	N 89°51'17" E 2644.91'	ROUND	2644.91	SECTION CORNER
PM 6	SECTION MONUMENT	N 89°51'17" E 2644.91'	ROUND	2644.91	SECTION CORNER
PM 7	SECTION MONUMENT	N 89°51'17" E 2644.91'	ROUND	2644.91	SECTION CORNER
PM 8	SECTION MONUMENT	N 89°51'17" E 2644.91'	ROUND	2644.91	SECTION CORNER
PM 9	SECTION MONUMENT	N 89°51'17" E 2644.91'	ROUND	2644.91	SECTION CORNER
PM 10	SECTION MONUMENT	N 89°51'17" E 2644.91'	ROUND	2644.91	SECTION CORNER
PM 11	SECTION MONUMENT	N 89°51'17" E 2644.91'	ROUND	2644.91	SECTION CORNER
PM 12	SECTION MONUMENT	N 89°51'17" E 2644.91'	ROUND	2644.91	SECTION CORNER
PM 13	SECTION MONUMENT	N 89°51'17" E 2644.91'	ROUND	2644.91	SECTION CORNER
PM 14	SECTION MONUMENT	N 89°51'17" E 2644.91'	ROUND	2644.91	SECTION CORNER
PM 15	SECTION MONUMENT	N 89°51'17" E 2644.91'	ROUND	2644.91	SECTION CORNER
PM 16	SECTION MONUMENT	N 89°51'17" E 2644.91'	ROUND	2644.91	SECTION CORNER
PM 17	SECTION MONUMENT	N 89°51'17" E 2644.91'	ROUND	2644.91	SECTION CORNER
PM 18	SECTION MONUMENT	N 89°51'17" E 2644.91'	ROUND	2644.91	SECTION CORNER
PM 19	SECTION MONUMENT	N 89°51'17" E 2644.91'	ROUND	2644.91	SECTION CORNER
PM 20	SECTION MONUMENT	N 89°51'17" E 2644.91'	ROUND	2644.91	SECTION CORNER
PM 21	SECTION MONUMENT	N 89°51'17" E 2644.91'	ROUND	2644.91	SECTION CORNER
PM 22	SECTION MONUMENT	N 89°51'17" E 2644.91'	ROUND	2644.91	SECTION CORNER
PM 23	SECTION MONUMENT	N 89°51'17" E 2644.91'	ROUND	2644.91	SECTION CORNER
PM 24	SECTION MONUMENT	N 89°51'17" E 2644.91'	ROUND	2644.91	SECTION CORNER
PM 25	SECTION MONUMENT	N 89°51'17" E 2644.91'	ROUND	2644.91	SECTION CORNER
PM 26	SECTION MONUMENT	N 89°51'17" E 2644.91'	ROUND	2644.91	SECTION CORNER
PM 27	SECTION MONUMENT	N 89°51'17" E 2644.91'	ROUND	2644.91	SECTION CORNER
PM 28	SECTION MONUMENT	N 89°51'17" E 2644.91'	ROUND	2644.91	SECTION CORNER
PM 29	SECTION MONUMENT	N 89°51'17" E 2644.91'	ROUND	2644.91	SECTION CORNER
PM 30	SECTION MONUMENT	N 89°51'17" E 2644.91'	ROUND	2644.91	SECTION CORNER

<b>JACOB CANAL</b>		<b>TOWNSHIPS 4 &amp; 5 SOUTH</b>	
<b>PLAN SHEET</b>			
<b>DESIGN</b>		<b>DRAFT</b>	
<b>SURVEY</b>		<b>QUANT.</b>	
NO. 99077	DATE FEBRUARY 11, 2000	BY EPC-CREW	DATE NOV. DEC. - 1999
ORIGINAL SUBMISSION FOR AUTHORIZATION			
REVISIONS			

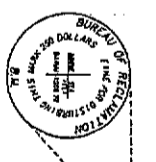
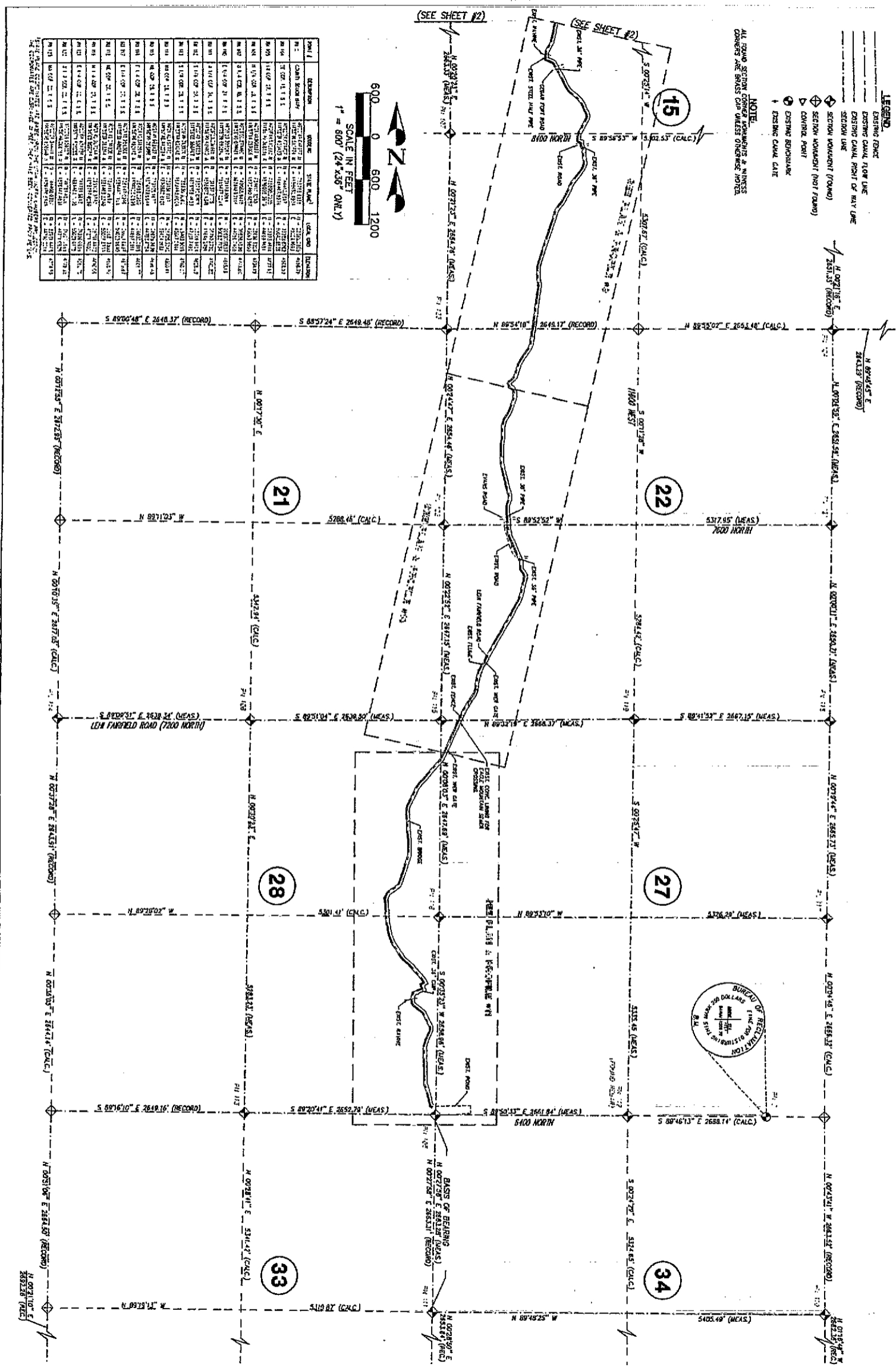
SHEET NO. 2

**LEGEND**  
 - - - - - EXISTING FENCE  
 - - - - - EXISTING CANAL FLOW LINE  
 - - - - - EXISTING CANAL RIGHT OF WAY LINE  
 --- SECTION LINE  
 ◆ SECTION MONUMENT (FOUND)  
 ◆ SECTION MONUMENT (NOT FOUND)  
 △ CONTROL POINT  
 ⊕ EXISTING BENCHMARK  
 \* EXISTING CANAL DATE

**NOTE**  
 ALL TOWN SECTION CORNER MONUMENTS & WITNESS CORNERS ARE BRASS CAP UNLESS OTHERWISE NOTED

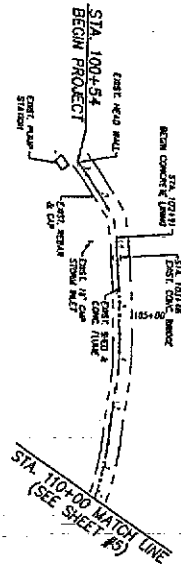
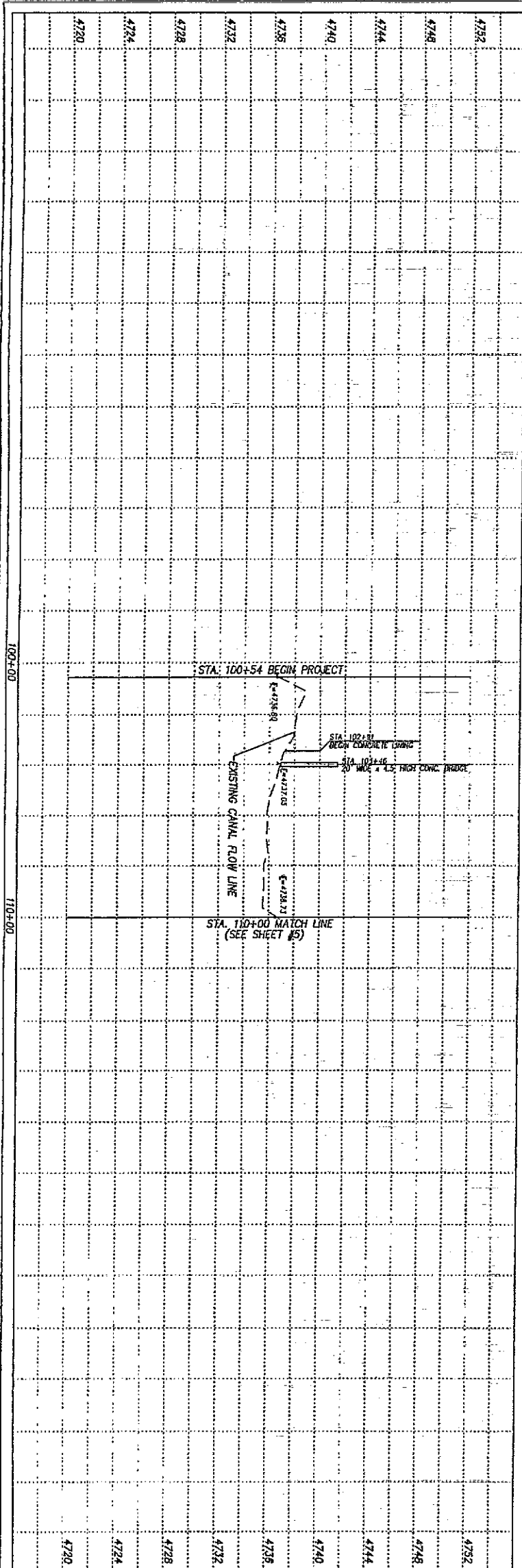


Point #	Description	Corner	Side (Fence)	Code	Location
M-1	CORNER SECTION 15	NE	SECTION 15	15	SECTION 15
M-2	CORNER SECTION 15	SE	SECTION 15	15	SECTION 15
M-3	CORNER SECTION 15	SW	SECTION 15	15	SECTION 15
M-4	CORNER SECTION 15	NW	SECTION 15	15	SECTION 15
M-5	CORNER SECTION 15	NE	SECTION 15	15	SECTION 15
M-6	CORNER SECTION 15	SE	SECTION 15	15	SECTION 15
M-7	CORNER SECTION 15	SW	SECTION 15	15	SECTION 15
M-8	CORNER SECTION 15	NW	SECTION 15	15	SECTION 15
M-9	CORNER SECTION 15	NE	SECTION 15	15	SECTION 15
M-10	CORNER SECTION 15	SE	SECTION 15	15	SECTION 15
M-11	CORNER SECTION 15	SW	SECTION 15	15	SECTION 15
M-12	CORNER SECTION 15	NW	SECTION 15	15	SECTION 15
M-13	CORNER SECTION 15	NE	SECTION 15	15	SECTION 15
M-14	CORNER SECTION 15	SE	SECTION 15	15	SECTION 15
M-15	CORNER SECTION 15	SW	SECTION 15	15	SECTION 15
M-16	CORNER SECTION 15	NW	SECTION 15	15	SECTION 15
M-17	CORNER SECTION 15	NE	SECTION 15	15	SECTION 15
M-18	CORNER SECTION 15	SE	SECTION 15	15	SECTION 15
M-19	CORNER SECTION 15	SW	SECTION 15	15	SECTION 15
M-20	CORNER SECTION 15	NW	SECTION 15	15	SECTION 15
M-21	CORNER SECTION 15	NE	SECTION 15	15	SECTION 15
M-22	CORNER SECTION 15	SE	SECTION 15	15	SECTION 15
M-23	CORNER SECTION 15	SW	SECTION 15	15	SECTION 15
M-24	CORNER SECTION 15	NW	SECTION 15	15	SECTION 15
M-25	CORNER SECTION 15	NE	SECTION 15	15	SECTION 15
M-26	CORNER SECTION 15	SE	SECTION 15	15	SECTION 15
M-27	CORNER SECTION 15	SW	SECTION 15	15	SECTION 15
M-28	CORNER SECTION 15	NW	SECTION 15	15	SECTION 15
M-29	CORNER SECTION 15	NE	SECTION 15	15	SECTION 15
M-30	CORNER SECTION 15	SE	SECTION 15	15	SECTION 15
M-31	CORNER SECTION 15	SW	SECTION 15	15	SECTION 15
M-32	CORNER SECTION 15	NW	SECTION 15	15	SECTION 15
M-33	CORNER SECTION 15	NE	SECTION 15	15	SECTION 15
M-34	CORNER SECTION 15	SE	SECTION 15	15	SECTION 15
M-35	CORNER SECTION 15	SW	SECTION 15	15	SECTION 15
M-36	CORNER SECTION 15	NW	SECTION 15	15	SECTION 15
M-37	CORNER SECTION 15	NE	SECTION 15	15	SECTION 15
M-38	CORNER SECTION 15	SE	SECTION 15	15	SECTION 15
M-39	CORNER SECTION 15	SW	SECTION 15	15	SECTION 15
M-40	CORNER SECTION 15	NW	SECTION 15	15	SECTION 15
M-41	CORNER SECTION 15	NE	SECTION 15	15	SECTION 15
M-42	CORNER SECTION 15	SE	SECTION 15	15	SECTION 15
M-43	CORNER SECTION 15	SW	SECTION 15	15	SECTION 15
M-44	CORNER SECTION 15	NW	SECTION 15	15	SECTION 15
M-45	CORNER SECTION 15	NE	SECTION 15	15	SECTION 15
M-46	CORNER SECTION 15	SE	SECTION 15	15	SECTION 15
M-47	CORNER SECTION 15	SW	SECTION 15	15	SECTION 15
M-48	CORNER SECTION 15	NW	SECTION 15	15	SECTION 15
M-49	CORNER SECTION 15	NE	SECTION 15	15	SECTION 15
M-50	CORNER SECTION 15	SE	SECTION 15	15	SECTION 15
M-51	CORNER SECTION 15	SW	SECTION 15	15	SECTION 15
M-52	CORNER SECTION 15	NW	SECTION 15	15	SECTION 15
M-53	CORNER SECTION 15	NE	SECTION 15	15	SECTION 15
M-54	CORNER SECTION 15	SE	SECTION 15	15	SECTION 15
M-55	CORNER SECTION 15	SW	SECTION 15	15	SECTION 15
M-56	CORNER SECTION 15	NW	SECTION 15	15	SECTION 15
M-57	CORNER SECTION 15	NE	SECTION 15	15	SECTION 15
M-58	CORNER SECTION 15	SE	SECTION 15	15	SECTION 15
M-59	CORNER SECTION 15	SW	SECTION 15	15	SECTION 15
M-60	CORNER SECTION 15	NW	SECTION 15	15	SECTION 15



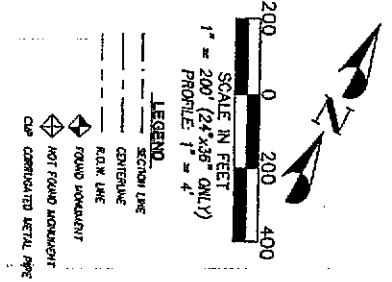
<b>JACOB CANAL</b> <b>TOWNSHIP 5 SOUTH</b> <b>PLAN SHEET</b>		<b>PENTACORE EPG</b> 76 EAST 6700 SOUTH • HOVULE, UT 84047 PH: (801) 562-2521 • FAX: (801) 562-2551	
DESIGN	DRAFT	SURVEY	QUANT.
BY: [Signature]	BY: [Signature]	BY: [Signature]	BY: [Signature]
NO. DATE	DESP. BY	DRFT. BY	PHASE
99077	N 199077 PLAN-01	FEBRUARY 11, 2000	REVISIONS
PROJECT NUMBER	PLC NAME	DATE	REVISIONS
3	UTAH COUNTY	3	REVISIONS



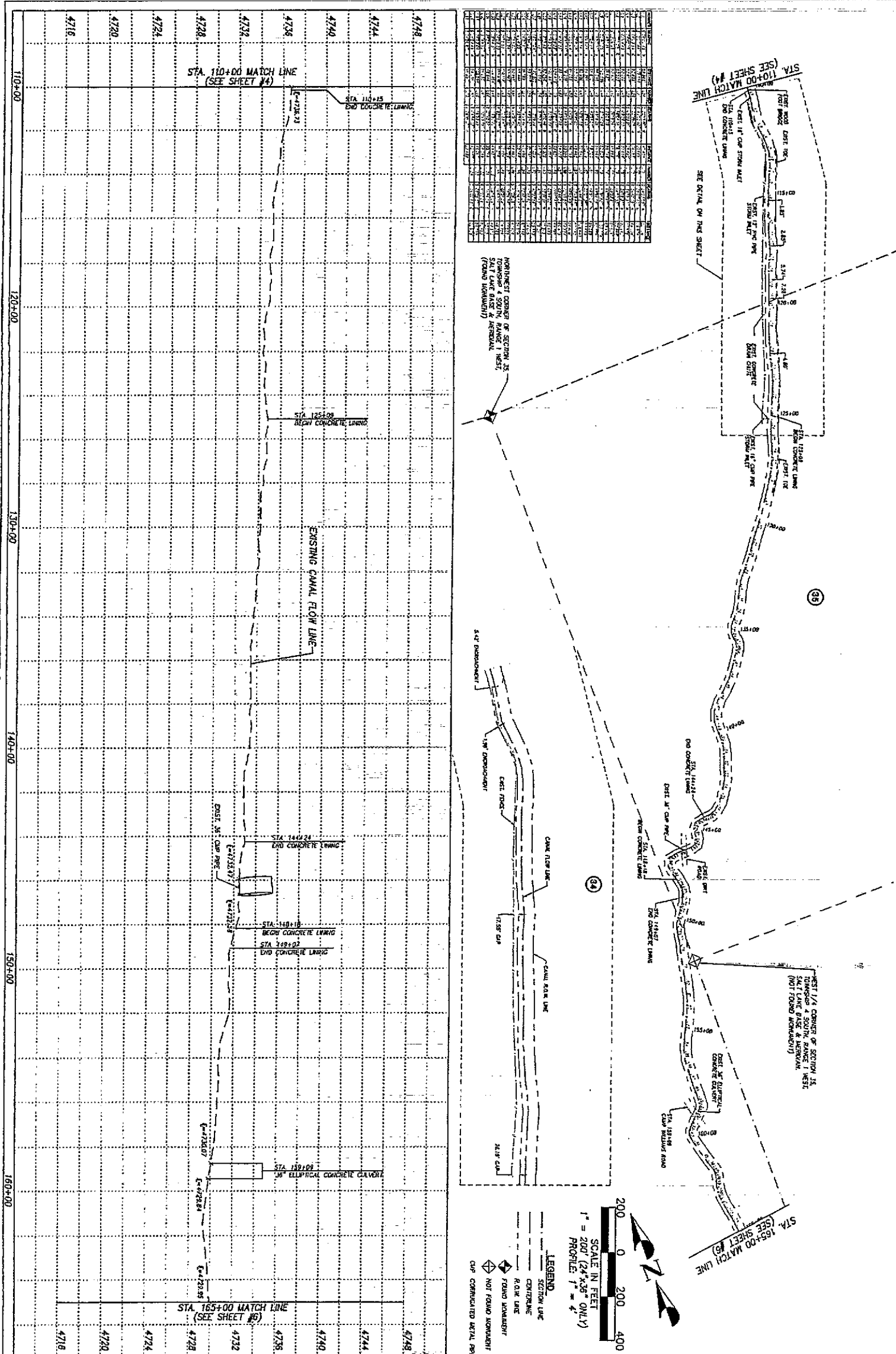


36

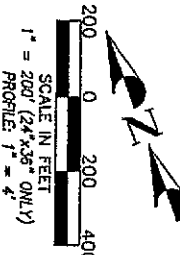
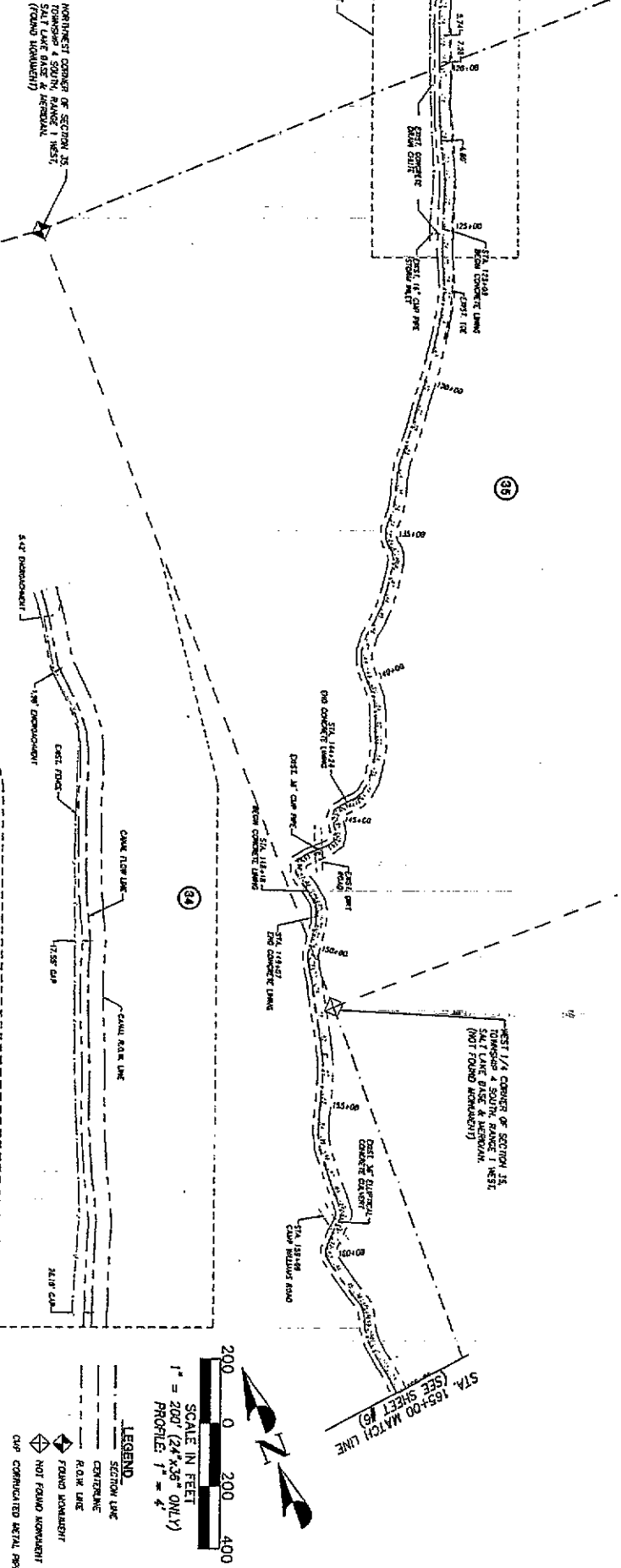
NO.	DATE	BY	REVISION



<b>JACOB CANAL</b>		<b>PENTACORE EPG</b>	
<b>STA. 100+54 TO STA. 110+00</b>		76 EAST 8700 SOUTH • MOYALE, UT 84047 PH: (801) 562-2521 • FAX: (801) 562-2551	
<b>PLAN &amp; PROFILE</b>			
<b>DESIGN</b>	<b>DRAFT</b>	<b>SURVEY</b>	<b>QUANT.</b>
BY: _____	BY: GCB	BY: EPS-CREW	BY: _____
DATE: FEBRUARY 11, 2000	CHECK: BMS/BSS	DATE: NOV/DEC - 1999	CHECK: _____
PROJECT NUMBER: 89027 FILE NAME: N:\99077\PLPRO-04		DATE: FEBRUARY 11, 2000	
UTAH COUNTY		REVISIONS	
SHEET NO. 4		REMARKS	
ORIGINAL SUBMISSION FOR AUTHORIZATION		REVISIONS	



NO.	DATE	BY	CHKD.	REVISIONS
1	NOV 1999	EPG-CRCW	DRS/DSS	ISSUED FOR PERMIT
2	NOV 1999	EPG-CRCW	DRS/DSS	ISSUED FOR PERMIT
3	NOV 1999	EPG-CRCW	DRS/DSS	ISSUED FOR PERMIT
4	NOV 1999	EPG-CRCW	DRS/DSS	ISSUED FOR PERMIT
5	NOV 1999	EPG-CRCW	DRS/DSS	ISSUED FOR PERMIT
6	NOV 1999	EPG-CRCW	DRS/DSS	ISSUED FOR PERMIT
7	NOV 1999	EPG-CRCW	DRS/DSS	ISSUED FOR PERMIT
8	NOV 1999	EPG-CRCW	DRS/DSS	ISSUED FOR PERMIT
9	NOV 1999	EPG-CRCW	DRS/DSS	ISSUED FOR PERMIT
10	NOV 1999	EPG-CRCW	DRS/DSS	ISSUED FOR PERMIT
11	NOV 1999	EPG-CRCW	DRS/DSS	ISSUED FOR PERMIT
12	NOV 1999	EPG-CRCW	DRS/DSS	ISSUED FOR PERMIT
13	NOV 1999	EPG-CRCW	DRS/DSS	ISSUED FOR PERMIT
14	NOV 1999	EPG-CRCW	DRS/DSS	ISSUED FOR PERMIT
15	NOV 1999	EPG-CRCW	DRS/DSS	ISSUED FOR PERMIT
16	NOV 1999	EPG-CRCW	DRS/DSS	ISSUED FOR PERMIT
17	NOV 1999	EPG-CRCW	DRS/DSS	ISSUED FOR PERMIT
18	NOV 1999	EPG-CRCW	DRS/DSS	ISSUED FOR PERMIT
19	NOV 1999	EPG-CRCW	DRS/DSS	ISSUED FOR PERMIT
20	NOV 1999	EPG-CRCW	DRS/DSS	ISSUED FOR PERMIT
21	NOV 1999	EPG-CRCW	DRS/DSS	ISSUED FOR PERMIT
22	NOV 1999	EPG-CRCW	DRS/DSS	ISSUED FOR PERMIT
23	NOV 1999	EPG-CRCW	DRS/DSS	ISSUED FOR PERMIT
24	NOV 1999	EPG-CRCW	DRS/DSS	ISSUED FOR PERMIT
25	NOV 1999	EPG-CRCW	DRS/DSS	ISSUED FOR PERMIT
26	NOV 1999	EPG-CRCW	DRS/DSS	ISSUED FOR PERMIT
27	NOV 1999	EPG-CRCW	DRS/DSS	ISSUED FOR PERMIT
28	NOV 1999	EPG-CRCW	DRS/DSS	ISSUED FOR PERMIT
29	NOV 1999	EPG-CRCW	DRS/DSS	ISSUED FOR PERMIT
30	NOV 1999	EPG-CRCW	DRS/DSS	ISSUED FOR PERMIT
31	NOV 1999	EPG-CRCW	DRS/DSS	ISSUED FOR PERMIT
32	NOV 1999	EPG-CRCW	DRS/DSS	ISSUED FOR PERMIT
33	NOV 1999	EPG-CRCW	DRS/DSS	ISSUED FOR PERMIT
34	NOV 1999	EPG-CRCW	DRS/DSS	ISSUED FOR PERMIT
35	NOV 1999	EPG-CRCW	DRS/DSS	ISSUED FOR PERMIT
36	NOV 1999	EPG-CRCW	DRS/DSS	ISSUED FOR PERMIT
37	NOV 1999	EPG-CRCW	DRS/DSS	ISSUED FOR PERMIT
38	NOV 1999	EPG-CRCW	DRS/DSS	ISSUED FOR PERMIT
39	NOV 1999	EPG-CRCW	DRS/DSS	ISSUED FOR PERMIT
40	NOV 1999	EPG-CRCW	DRS/DSS	ISSUED FOR PERMIT
41	NOV 1999	EPG-CRCW	DRS/DSS	ISSUED FOR PERMIT
42	NOV 1999	EPG-CRCW	DRS/DSS	ISSUED FOR PERMIT
43	NOV 1999	EPG-CRCW	DRS/DSS	ISSUED FOR PERMIT
44	NOV 1999	EPG-CRCW	DRS/DSS	ISSUED FOR PERMIT
45	NOV 1999	EPG-CRCW	DRS/DSS	ISSUED FOR PERMIT
46	NOV 1999	EPG-CRCW	DRS/DSS	ISSUED FOR PERMIT
47	NOV 1999	EPG-CRCW	DRS/DSS	ISSUED FOR PERMIT
48	NOV 1999	EPG-CRCW	DRS/DSS	ISSUED FOR PERMIT
49	NOV 1999	EPG-CRCW	DRS/DSS	ISSUED FOR PERMIT
50	NOV 1999	EPG-CRCW	DRS/DSS	ISSUED FOR PERMIT



**LEGEND**  
 SECTION LINE  
 CENTERLINE  
 ROW LINE  
 FOUND MONUMENT  
 NOT FOUND MONUMENT  
 CAP CORNERED METAL PEG

**JACOB CANAL**  
**STA. 110+00 TO STA. 165+00**

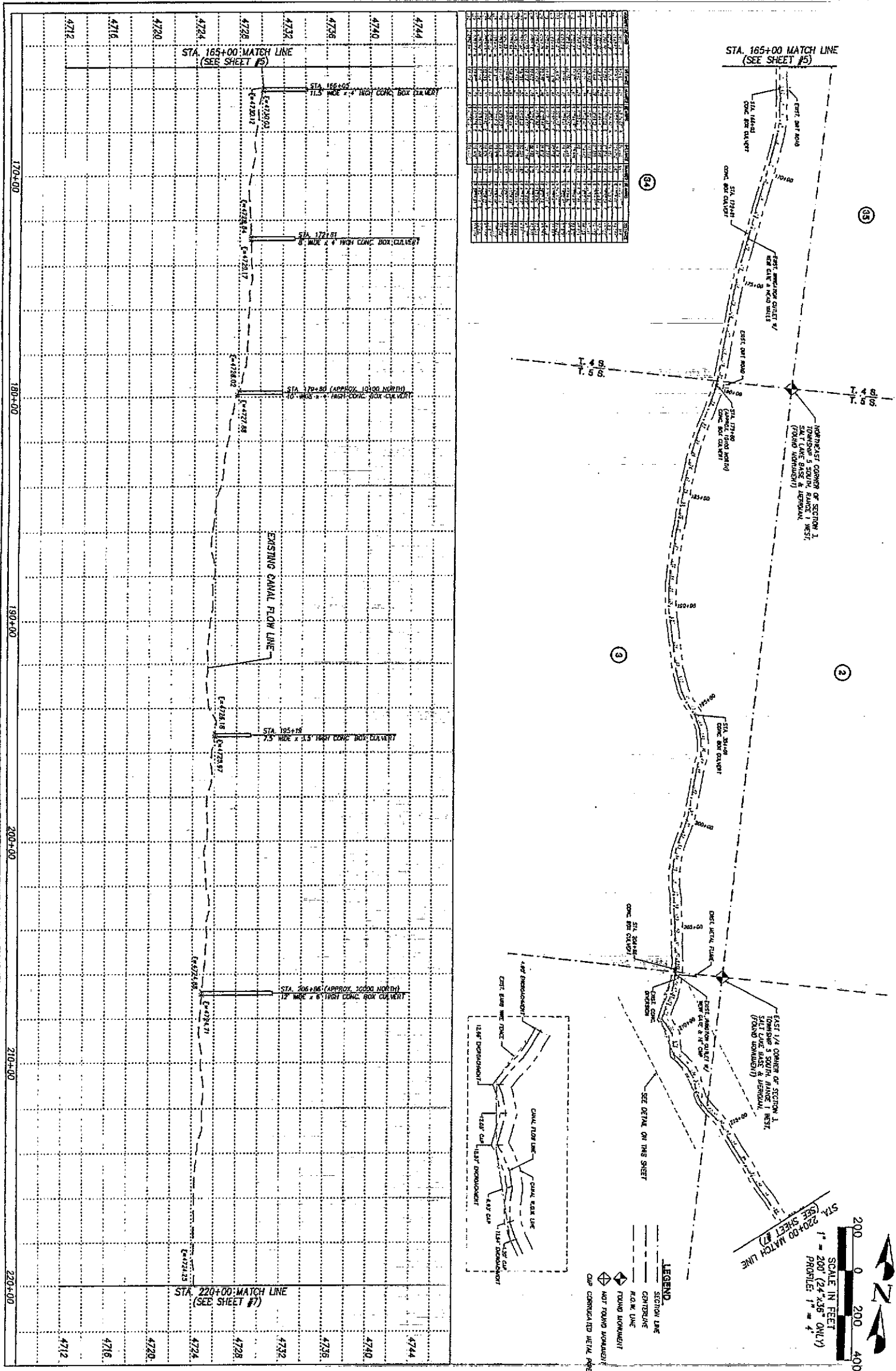
PLAN & PROFILE  
 FEBRUARY 11, 2000  
 DATE

**PENTACORE EPG**  
 26 EAST 6700 SOUTH • HAYVILLE, UT 84041  
 PH. (801) 562-2521 • FAX (801) 562-2521

DESIGN	DRAFT	SURVEY	QUANT.
BY	BY BCU	BY EPG-CRCW	BY
CHKD.	CHKD. DRS/DSS	DATE NOV/DEC - 1999	3-CHK

NO.	DATE	REVISION	REMARKS

SHEET NO. 5  
 UTAH COUNTY



**JACOB CANAL**  
**STA. 165+00 TO STA. 220+00**  
**PLAN & PROFILE**

**PENTACORE EPG**  
 75 EAST 6700 SOUTH • MIDVALE UT 84047  
 PH: (801) 562-2521 • FAX: (801) 562-2531

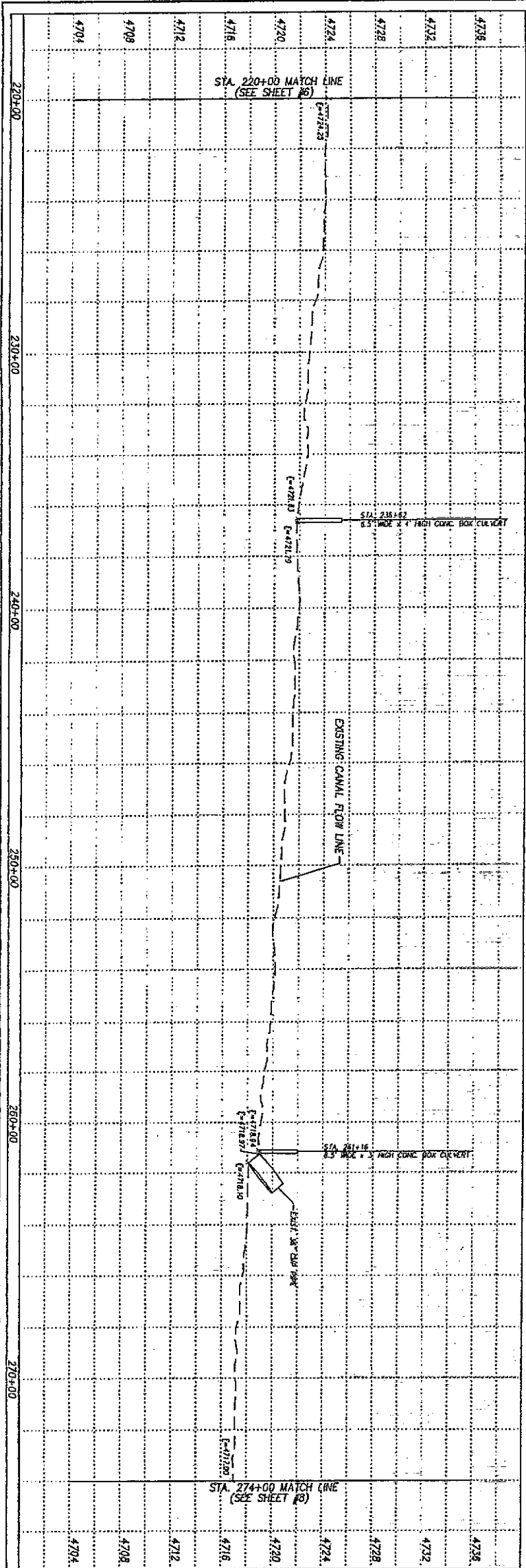
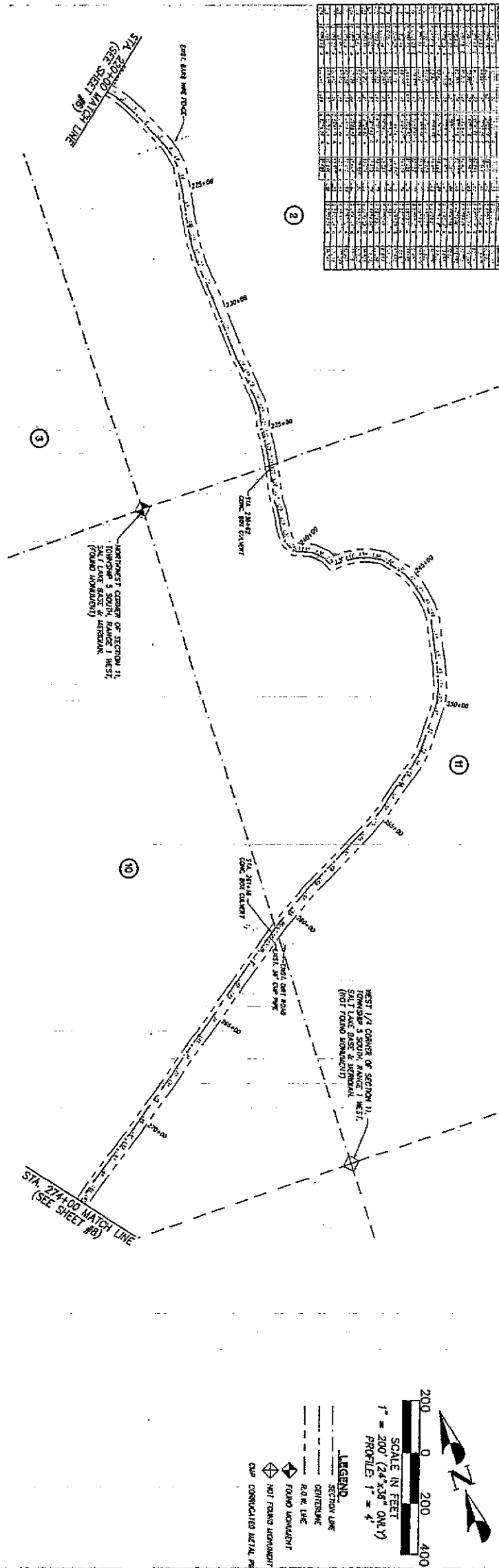
DESIGN	DRAFT	SURVEY	QUANT.
BY: [Signature]	BY: [Signature]	BY: [Signature]	BY: [Signature]
CHECK: [Signature]	CHECK: [Signature]	DATE: NOV/DEC - 1999	CHECK: [Signature]

UTAH COUNTY SHEET NO. 6

99077 PROJECT NUMBER  
 #199077/PLPR0-06 P&P NUMBER  
 FEBRUARY 11, 2000 DATE

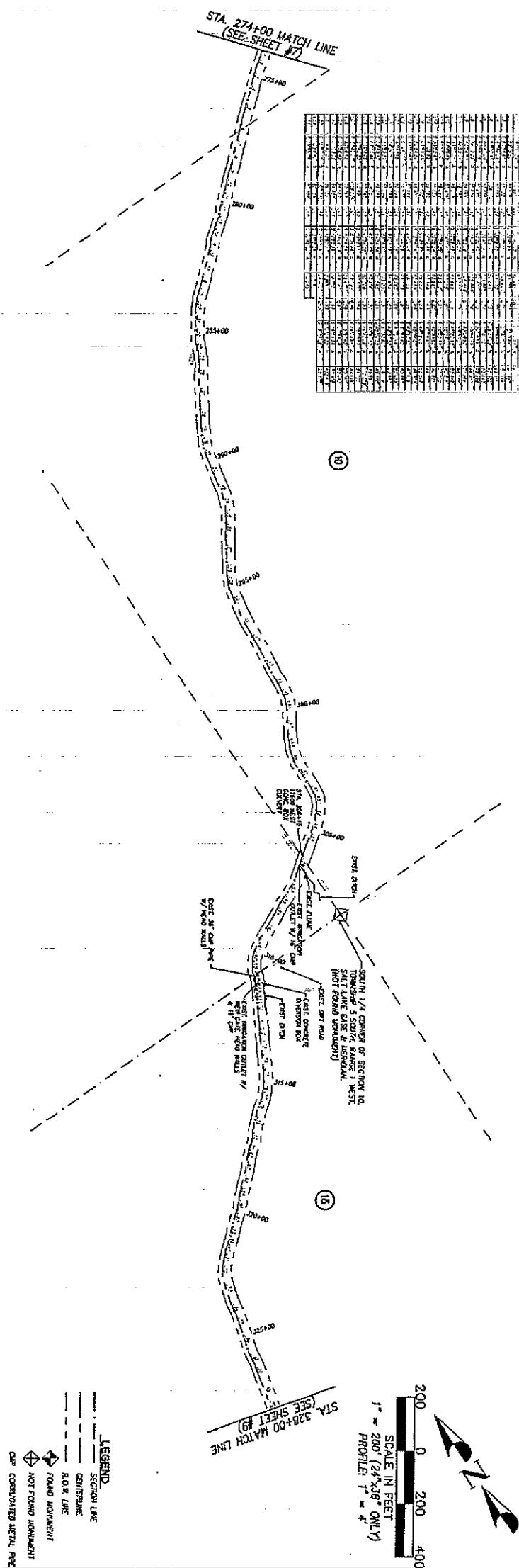
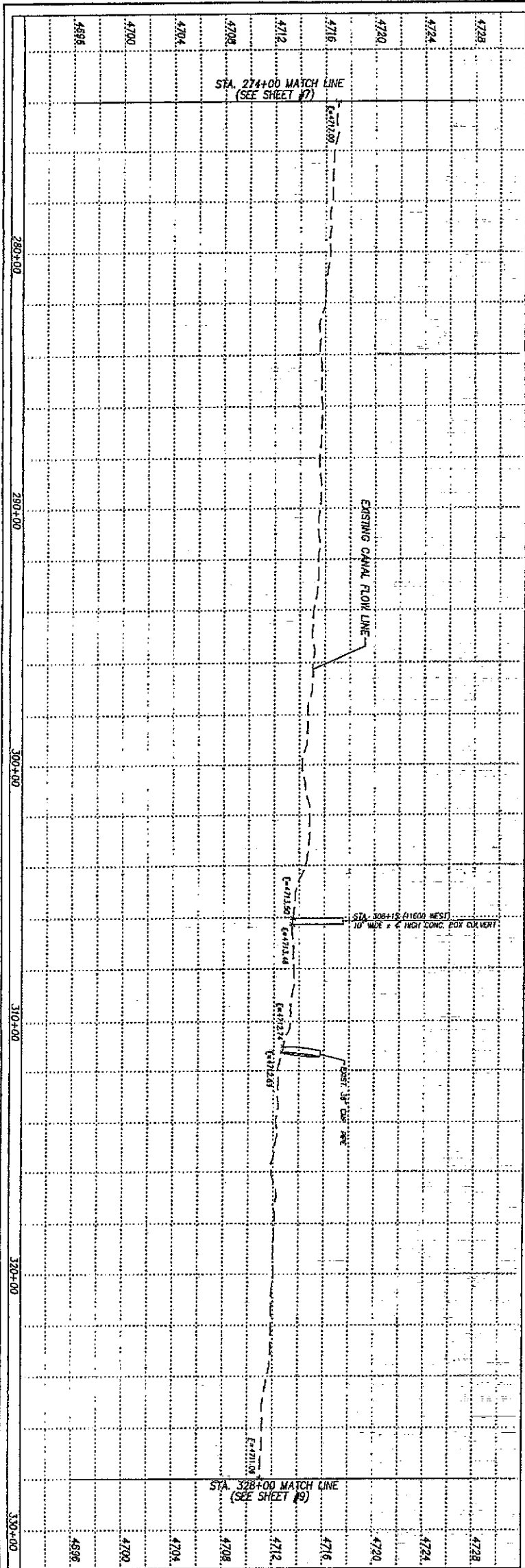
NO. DATE  
 ORIGINAL SUBMISSION FOR AUTHORIZATION  
 REVISIONS

NO.	DATE	BY	REVISION
1			
2			
3			
4			
5			
6			
7			
8			
9			
10			
11			
12			
13			
14			
15			
16			
17			
18			
19			
20			
21			
22			
23			
24			
25			
26			
27			
28			
29			
30			
31			
32			
33			
34			
35			
36			
37			
38			
39			
40			
41			
42			
43			
44			
45			
46			
47			
48			
49			
50			
51			
52			
53			
54			
55			
56			
57			
58			
59			
60			
61			
62			
63			
64			
65			
66			
67			
68			
69			
70			
71			
72			
73			
74			
75			
76			
77			
78			
79			
80			
81			
82			
83			
84			
85			
86			
87			
88			
89			
90			
91			
92			
93			
94			
95			
96			
97			
98			
99			
100			



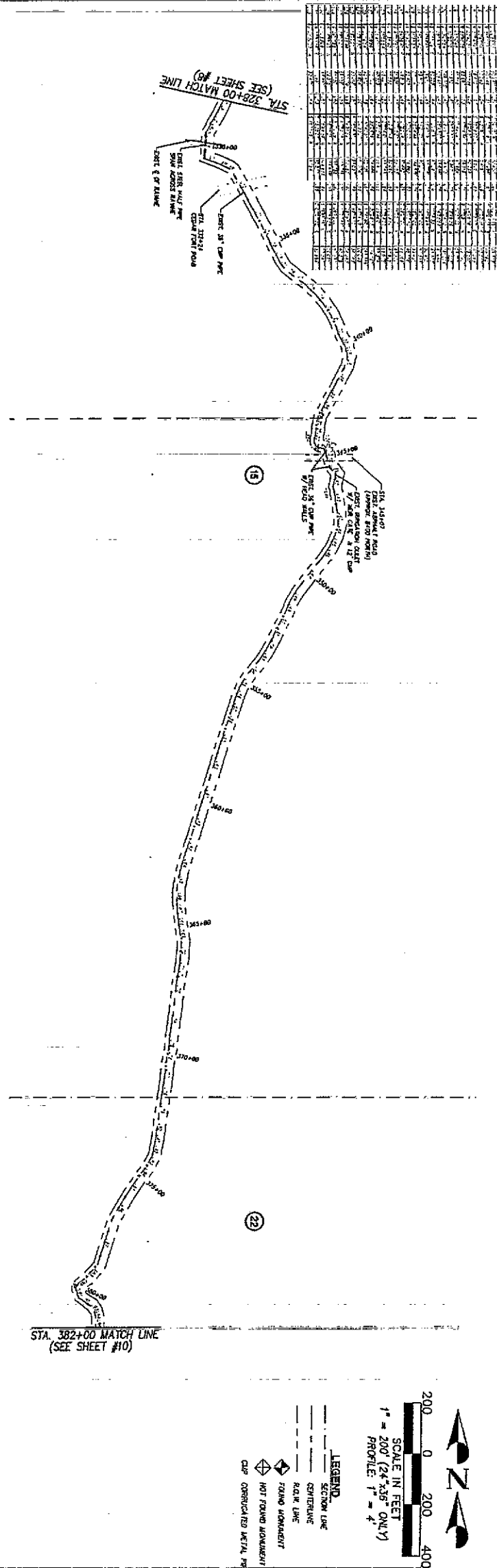
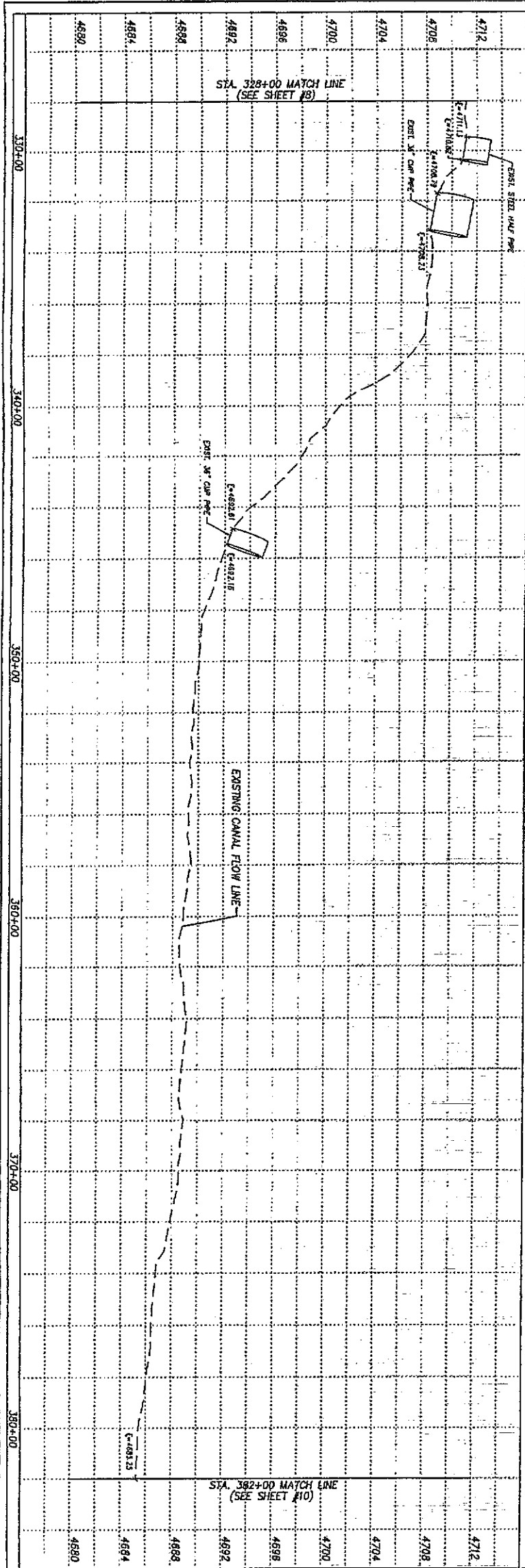
<b>JACOB CANAL</b> <b>STA. 220+00 TO STA. 274+00</b>		<b>PENTACORE EPG</b> 76 EAST 6780 SOUTH • LARIVILLE, UT 84047 PH: (801) 562-2521 • FAX: (801) 562-2551			
PLAN & PROFILE		DESIGN	DRAFT	SURVEY	QUANT.
PROJECT NUMBER: 98077	FILE NAME: AL\98077\PLPRO-07	DATE: FEBRUARY 21, 2000	BY: GGD	BY: EPC-CBEW	DATE: NOV/DEC - 1999
ORIGINAL SUBMISSION FOR AUTHORIZATION					
REVISIONS					

SHEET NO. 7



NO.	DATE	REVISION	BY	CHKD.
1				
2				
3				
4				
5				
6				
7				
8				
9				
10				
11				
12				
13				
14				
15				
16				
17				
18				
19				
20				
21				
22				
23				
24				
25				
26				
27				
28				
29				
30				
31				
32				
33				
34				
35				
36				
37				
38				
39				
40				
41				
42				
43				
44				
45				
46				
47				
48				
49				
50				

SHEET NO. <b>8</b>	<b>JACOB CANAL</b>			<b>PENTACORE EPG</b>		NO. DATE	REVISION	DRAFT	PARCEL	REMARKS
	<b>STA. 274+00 TO STA. 328+00</b>			76 EAST 6700 SOUTH • HERRVILLE, UT 84047 PH: (801) 562-2521 • FAX: (801) 562-2551						
<b>PLAN &amp; PROFILE</b>										
PROJECT NUMBER: 03077	FILE NAME: N:\03077\PLPRO-08	DATE: FEBRUARY 11, 2000	DESIGNER: BCD	DRAFTER: BCD	SURVEYOR: EPG-CREY	QUANTIFIER:	ORIGINAL SUBMISSION FOR AUTHORIZATION			
UTAH COUNTY			CHECK: DRS/205	DATE: NOV 2000	1998	REVISIONS				



STATION	ELEVATION	REMARKS
328+00	4690.00	EXIST. 36\"/>

**LEGEND**

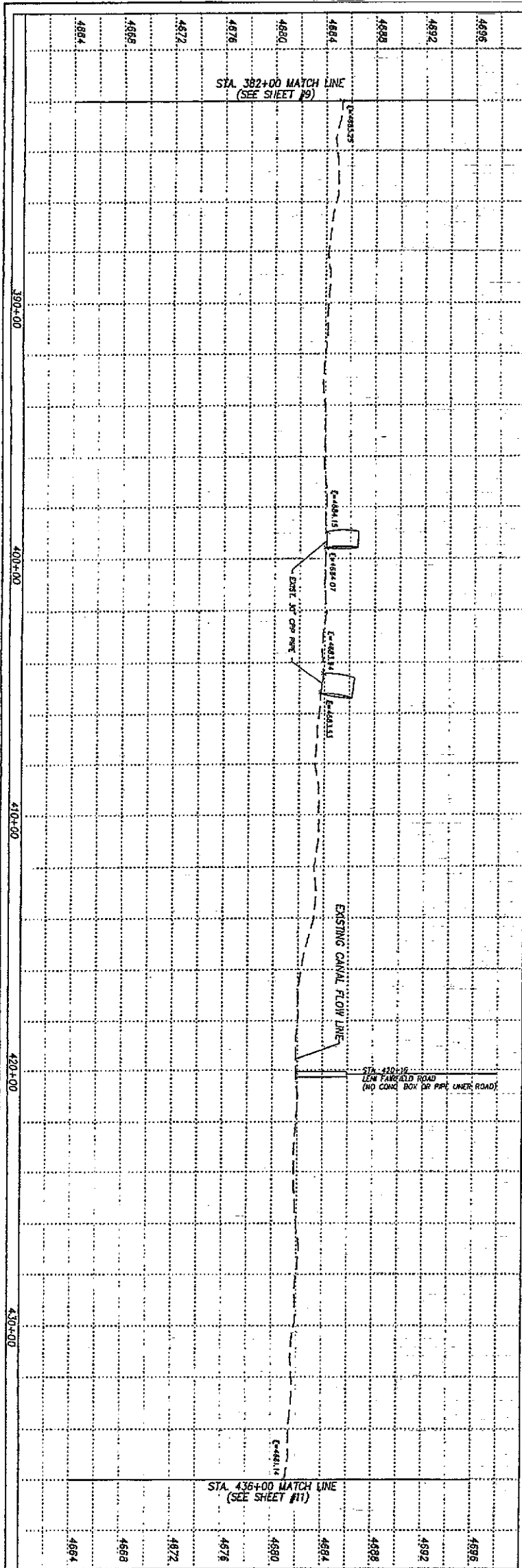
- SECTION LINE
- GENERAL LINE
- RA.W. LINE
- FOUND ALIGNMENT
- HOT FOUND ALIGNMENT
- CLIP OVERLAP RED METAL PIPE

**SCALE IN FEET**  
 1" = 200' (PLAN ONLY)  
 PROFILE: 1" = 4'

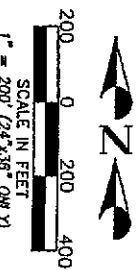
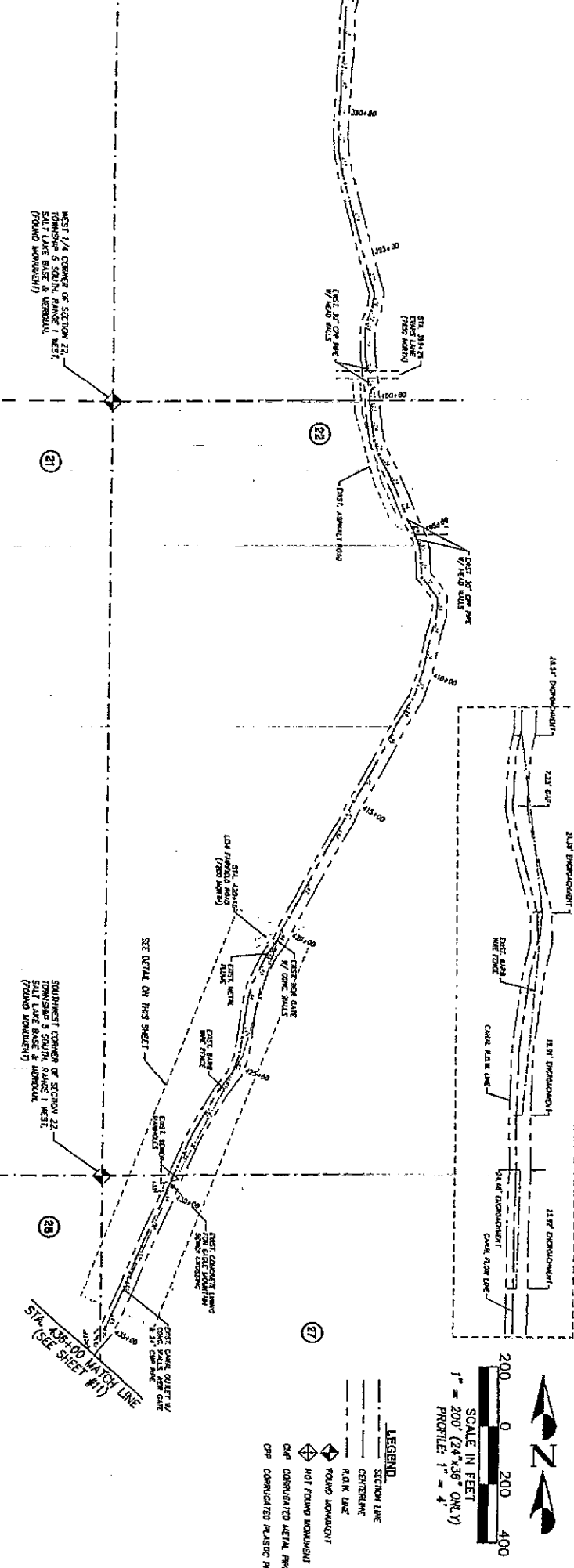
<b>JACOB CANAL</b> <b>STA. 328+00 TO STA. 382+00</b> <b>PLAN &amp; PROFILE</b>		<b>PENTACORE EPG</b> 76 EAST 6790 SOUTH • MOHAVE, UT 81047 PH: (801) 562-2521 • FAX: (801) 562-2551	
DESIGN	DRAFT	SURVEY	QUART.
BY: _____	BY: BCB	BY: EPC-GREY	BY: _____
CHECK: _____	CHECK: DRS/2052	DATE: NOV/DEC - 1999	CHECK: _____
99077	H:\99077\PLPR0-09	FEBRUARY 11, 2000	
PROJECT NUMBER	DATE		

NO.	DATE	REVISED BY	DATE	REVISIONS	REMARKS

ORIGINAL SUBMISSION FOR AUTHORIZATION



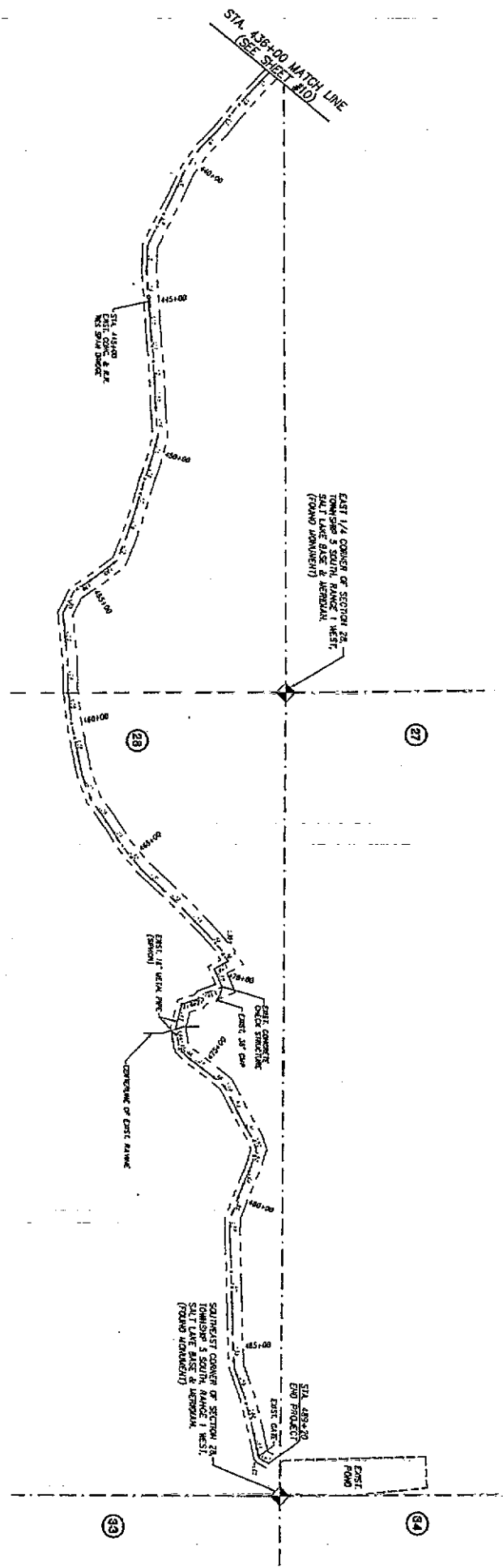
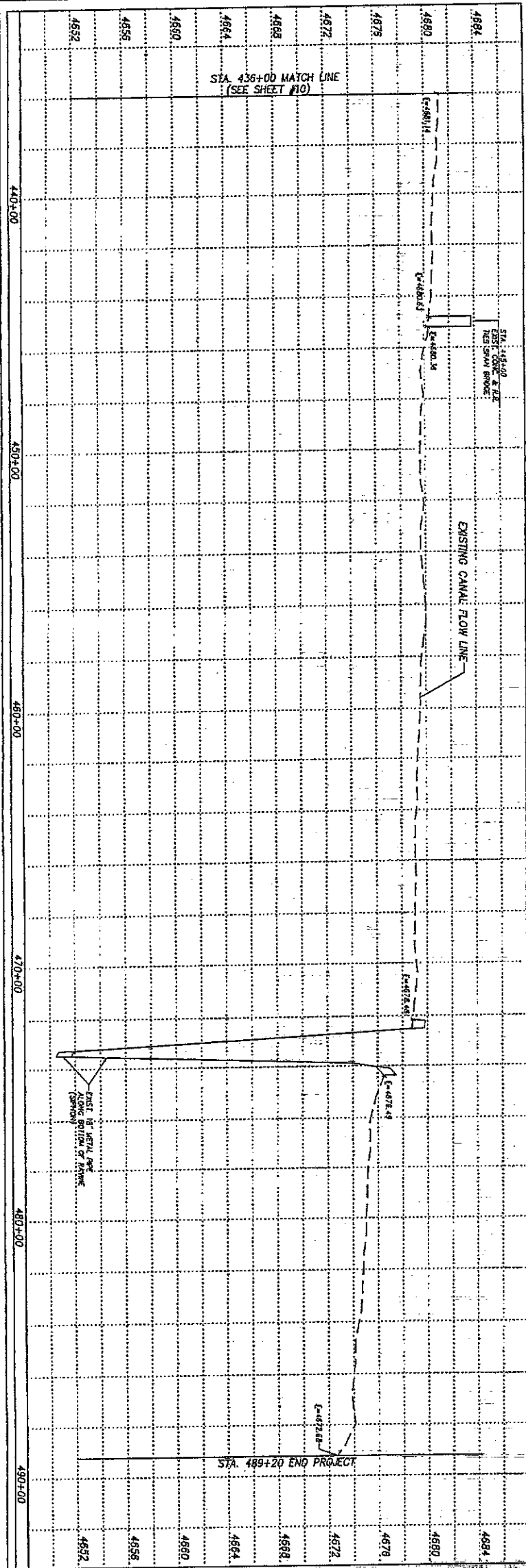
NO.	DESCRIPTION	AMOUNT	UNIT	TOTAL
1	GRAVEL	100	CU YD	100
2	CRUSHED ROCK	100	CU YD	100
3	CONCRETE	100	CU YD	100
4	PIPE	100	LINEAL FT	100
5	WIRE	100	LINEAL FT	100
6	BRICK	100	CU YD	100
7	CEMENT	100	CU YD	100
8	FLY ASH	100	CU YD	100
9	CLAY	100	CU YD	100
10	SAND	100	CU YD	100
11	GRAVEL	100	CU YD	100
12	CRUSHED ROCK	100	CU YD	100
13	CONCRETE	100	CU YD	100
14	PIPE	100	LINEAL FT	100
15	WIRE	100	LINEAL FT	100
16	BRICK	100	CU YD	100
17	CEMENT	100	CU YD	100
18	FLY ASH	100	CU YD	100
19	CLAY	100	CU YD	100
20	SAND	100	CU YD	100



**LEGEND**

- SECTION LINE
- CENTERLINE
- R.O.M. LINE
- ◆ FOUND MONUMENT
- ◆ NOT FOUND MONUMENT
- ◆ C&G CORNERED METAL PINE
- ◆ CORNERED PLASTIC PINE

<b>JACOB CANAL</b>		<b>PENTACORE EPG</b>	
<b>STA. 382+00 TO STA. 436+00</b>		76 EAST 6250 SOUTH • HOVULE, UT 84047 PH: (801) 562-2521 • FAX: (801) 562-2551	
<b>PLAN &amp; PROFILE</b>		<b>DESIGN</b>	<b>DRAFT</b>
PROJECT NUMBER: 99077 FILE NAME: N:\99077\PLPRO-10		BY: BCR	BY: EPG-CREW
DATE: FEBRUARY 11, 2000		CHECK: DRS/DSS	DATE: NOV/DEC - 1999
SHEET NO. 10	UTAH COUNTY	REMARKS	
		ORIGINAL SUBMISSION FOR AUTHORIZATION	
		REVISIONS	



STATION	EXIST. CANAL	PROPOSED CANAL	DIFFERENCE
440+00	4852.00	4852.00	0.00
445+00	4855.00	4855.00	0.00
450+00	4858.00	4858.00	0.00
455+00	4861.00	4861.00	0.00
460+00	4864.00	4864.00	0.00
465+00	4867.00	4867.00	0.00
470+00	4870.00	4870.00	0.00
475+00	4873.00	4873.00	0.00
480+00	4876.00	4876.00	0.00
485+00	4879.00	4879.00	0.00
489+20	4884.00	4884.00	0.00

**LEGEND**  
 - - - SECTION LINE  
 - - - CENTERLINE  
 - - - R.O.W. LINE  
 ◊ FOUND MONUMENT  
 ◊ NOT FOUND MONUMENT

SCALE IN FEET  
 1" = 200' (24" x 36" ONLY)  
 PROFILE: 1" = 4'

**JACOB CANAL**  
**STA. 436+00 TO STA. 489+20**  
**PLAN & PROFILE**

UTAH COUNTY  
 SHEET NO. 11

**PENTACORE EPG**  
 76 EAST 6700 SOUTH • DRIVALE, UT 84047  
 PH (801) 562-2521 • FAX (801) 562-1551

DESIGN	DRAFT	SURVEY	QUANT.
BY	BY	BY	BY
BY	BY	BY	BY

DATE: NOV./DEC - 1999

NO.	DATE	BY	REVISION	REMARKS

ORIGINAL SUBMISSION FOR AUTHORIZATION  
 REVISIONS