

0
14

STATE OF UTAH



ENT 72904:2007 PG 1 of 14
RANDALL A. COVINGTON
UTAH COUNTY RECORDER
2007 May 17 9:30 am FEE 0.00 BY CM
RECORDED FOR STATE OF UTAH

State of Utah
Suite E325
Salt Lake City, UT
84114-2325

OFFICE OF THE LIEUTENANT GOVERNOR

CERTIFICATE OF INCORPORATION

I, GARY R. HERBERT, LIEUTENANT GOVERNOR OF THE STATE OF UTAH, HEREBY CERTIFY THAT there has been filed in my office a notice, as required by Sections 17A-2-101 and 17B-2-215, Utah Code Annotated, 1953, as amended, from Santaquin City establishing the creation of the SANTAQUIN SPECIAL SERVICE DISTRICT, dated May 4th, 2007.

NOW, THEREFORE, notice is hereby given to all whom it may concern that the attached is a true and correct copy of the notice, referred to above, on file with the Office of the Lieutenant Governor pertaining to the SANTAQUIN SPECIAL SERVICE DISTRICT, located in Utah County, State of Utah.



IN TESTIMONY WHEREOF, I have hereunto set my hand and affixed the Great Seal of the State of Utah at Salt Lake City, this 14th day of May, 2007.


GARY R. HERBERT
Lieutenant Governor

STATE OF UTAH)
 : ss
COUNTY OF UTAH)

On February 7, 2007, the City Council of Santaquin City, Utah, adopted Resolution No. 2-01-2007, thereby establishing a Special Service District to be known as the Santaquin Special Service District. The City Council hereby certifies that it has complied with the requirements of Utah Code Ann. §17A-2-1301 et seq. to complete the lawful establishment of the Santaquin Special Service District.

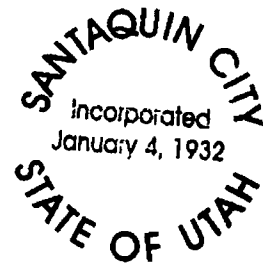
DATED this 4th day of May, 2007.

SANTAQUIN CITY

James E. DeGraffenkied
JAMES E. DEGRAFFENKIED, Mayor

ATTEST:

Susan B. Farnsworth
Susan B. Farnsworth, City Recorder



Received

MAY 08 2007

Gary R. Herbert
Lieutenant Governor

RESOLUTION NO. 02-01-2007

**A RESOLUTION ESTABLISHING A SPECIAL SERVICE DISTRICT
PURSUANT TO THE UTAH SPECIAL SERVICE DISTRICT ACT,
§ 17A-2-1301, *et seq.*, UTAH CODE ANNOTATED (1953), AS
AMENDED, TO BE KNOWN AS THE SANTAQUIN SPECIAL SERVICE
DISTRICT**

WHEREAS, Section 17A-2-1301, *et seq.*, Utah Code Ann. (1953), as amended, known as the "Utah Special Service District Act" (the "Act"), authorizes the establishment of special service districts for the purposes enumerated in the Act, including culinary water, secondary (irrigation) water, sewer, recreation, garbage collection, snow removal, transportation (owning, maintaining, repairing and replacing roads within the boundaries of the Special Service District) and street lighting service; and

WHEREAS, the Santaquin City Council has found that the public health, convenience, and necessity requires the establishment of a special service district; and

WHEREAS, the City Council provided notice of its intention to establish the special service district in accordance with the requirements of the Act; and

WHEREAS a public hearing was held on January 3, 2007, at which time the public was given the opportunity to ask questions and express all comments concerning the proposed special service district.

NOW, THEREFORE, BE IT RESOLVED BY THE CITY COUNCIL OF SANTAQUIN CITY, STATE OF UTAH:

Section 1. Determination. The City Council of Santaquin City hereby establishes a special service district pursuant to and in accordance with the provisions of the Act.

Section 2. Boundaries. The boundaries of the special service district shall include all the real property described in "Santaquin City Boundary Description - November 21, 2006" a copy of which is attached hereto as Exhibit A and incorporated herein by reference.

Section 3. Services. The special service district shall have all rights, powers and authority granted by law and the Act to acquire, improve, own, operate, manage and administer a culinary water system and also a secondary (irrigation) water system within the special service district including, but not limited to the acquisition and/or construction of related facilities for the benefit of persons and properties located within the boundaries of the special service district and visitors to the special service district. The special service district may provide sewer facilities and improvements, recreation, garbage removal, transportation (owning, maintaining, repairing and replacing roads within the boundaries of the special service district) and street lighting and other services including:

- (a) providing culinary and secondary (irrigation) water to property owners and residents within the Santaquin Special Service District;
- (b) constructing, acquiring, financing, managing, operating, maintaining, and repairing all facilities, improvements, personal property and interests in real property as appropriate to provide culinary and secondary (irrigation) water to property owners and residents within the special service district; and
- (c) providing any service desired by the Governing Body within the special service district which is enumerated in *Utah Code Ann. § 17A-2-1304*.


In furtherance of the foregoing, the special service district is hereby empowered to, among other things, finance, construct or arrange for the construction of additional facilities; raise funds, by way of government grants, government loans, taxes, assessments or otherwise, for each of the purposes specified above; and enter into such contracts, instruments and agreements, and undertake such other activities as may be necessary to carry out the foregoing purposes and provide desired services.

Section 4. Name Designation. The special service district which is the subject hereof shall be known and is hereby designated as the "Santaquin Special Service District."

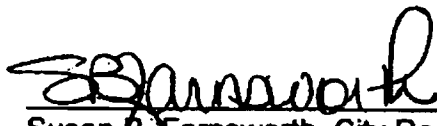
Section 5. Effective Date. This Resolution shall take effect immediately upon its approval and adoption by the City Council.

APPROVED AND ADOPTED THIS 7th DAY OF February, 2007.

SANTAQUIN CITY,
a municipal corporation


James E. DeGraffenried, Mayor

ATTEST:


Susan B. Farnsworth, City Recorder

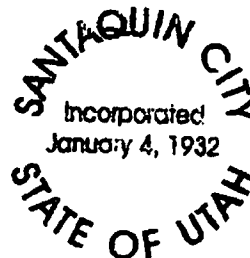


EXHIBIT A

**LEGAL DESCRIPTION OF THE BOUNDARIES OF THE PROPOSED
SANTAQUIN SPECIAL SERVICE DISTRICT
(to be attached)**

Santaquin City Boundary Description**November 21, 2006**

Beginning at the West 1/4 corner of Section 4, Township 10 South, Range 1 East, Salt lake Base and Meridian; and running thence along the following 236 courses to wit:

- 1) South 0°10'55" East 2685.77 feet;
- 2) South 0°55'05" East 5256.75 feet;
- 3) South 4°36'23" East 2643.60 feet;
- 4) South 0°33'03" East 2677.54 feet;
- 5) North 89°46'08" East 5242.34 feet;
- 6) North 1°25'55" West 2725.85 feet;
- 7) North 0°01'03" West 80.62 feet;
- 8) South 38°15'38" East 93.55 feet;
- 9) South 31°23'47" East 76.30 feet;
- 10) South 36°31'35" East 396.51 feet;
- 11) South 31°19'11" East 201.03 feet;
- 12) South 35°51'49" East 155.33 feet;
- 13) South 33°17'14" East 177.98 feet;
- 14) South 33°26'51" East 82.55 feet;
- 15) South 45°34'02" East 89.28 feet;
- 16) South 41°02'50" East 90.99 feet;
- 17) South 61°34'44" East 48.32 feet;
- 18) South 62°08'32" East 94.16 feet;
- 19) South 67°00'36" East 48.34 feet;
- 20) South 68°32'14" East 113.09 feet;
- 21) North 87°08'15" East 80.10 feet;
- 22) South 76°39'17" East 140.80 feet;
- 23) South 67°55'10" East 285.97 feet;
- 24) South 62°24'35" East 206.20 feet;
- 25) South 60°48'41" East 83.05 feet;
- 26) South 61°08'00" East 47.10 feet;
- 27) South 64°07'19" East 67.95 feet;
- 28) North 1°25'24" East 805.14 feet;
- 29) South 89°06'00" East 685.78 feet;
- 30) South 0°06'20" East 638.39 feet;
- 31) North 48°27'55" East 323.10 feet;
- 32) South 89°56'17" East 924.06 feet;
- 33) North 28°28'47" East 388.22 feet;
- 34) North 31°22'44" East 714.78 feet;
- 35) North 30°17'48" East 1130.46 feet;

- 36) Northeasterly 503.92 feet along the arc of a 874.93 ft. radius curve to the left, the chord bears North $14^{\circ}10'23''$ East 496.98 feet;
- 37) North $2^{\circ}19'37''$ West 235.03 feet;
- 38) Northeasterly 1097.74 feet along the arc of a 898.51 ft. radius curve to the right, the chord bears North $32^{\circ}40'23''$ East 1030.73 feet;
- 39) North $71^{\circ}41'23''$ East 19.42 feet;
- 40) North $89^{\circ}19'21''$ East 2252.88 feet;
- 41) North $88^{\circ}48'37''$ East 2784.37 feet;
- 42) North $0^{\circ}04'33''$ West 150.75 feet;
- 43) North $88^{\circ}33'37''$ East 1171.57 feet;
- 44) North $0^{\circ}04'33''$ West 1312.04 feet;
- 45) South $88^{\circ}33'37''$ West 235.60 feet;
- 46) North $23^{\circ}51'08''$ West 660.02 feet;
- 47) North $12^{\circ}01'51''$ West 674.30 feet;
- 48) North $86^{\circ}30'37''$ East 215.73 feet;
- 49) North 31.95 feet;
- 50) North $88^{\circ}31'03''$ East 207.96 feet;
- 51) South $6^{\circ}38'58''$ East 0.91 feet;
- 52) North $88^{\circ}31'45''$ East 214.99 feet;
- 53) South $0^{\circ}07'51''$ East 54.29 feet;
- 54) North $89^{\circ}42'38''$ East 46.57 feet;
- 55) North $88^{\circ}03'04''$ East 401.40 feet;
- 56) North $89^{\circ}59'10''$ East 246.38 feet;
- 57) North $88^{\circ}50'31''$ East 64.89 feet;
- 58) North $0^{\circ}06'48''$ East 577.50 feet;
- 59) North $85^{\circ}52'44''$ West 231.00 feet;
- 60) North $0^{\circ}06'48''$ East 234.58 feet;
- 61) North $89^{\circ}13'58''$ West 300.28 feet;
- 62) North $0^{\circ}46'02''$ East 138.25 feet;
- 63) North $89^{\circ}13'58''$ West 476.72 feet;
- 64) North $2^{\circ}48'52''$ East 86.06 feet;
- 65) West 78.17 feet;
- 66) North $3^{\circ}00'00''$ East 257.33 feet;
- 67) North $89^{\circ}02'00''$ East 121.00 feet;
- 68) North $2^{\circ}40'00''$ East 72.64 feet;
- 69) South $89^{\circ}59'55''$ East 1510.56 feet;
- 70) North $0^{\circ}11'08''$ West 234.38 feet;
- 71) North $89^{\circ}15'42''$ East 1081.79 feet;
- 72) South $0^{\circ}55'23''$ East 176.00 feet;
- 73) North $89^{\circ}16'47''$ East 219.92 feet;
- 74) South $0^{\circ}55'23''$ East 133.93 feet;
- 75) North $89^{\circ}17'18''$ East 1357.01 feet;

- 76) North 0°45'01" West 669.96 feet;
- 77) North 0°45'53" West 224.79 feet;
- 78) North 0°44'51" West 554.74 feet;
- 79) South 88°40'00" East 660.07 feet;
- 80) North 0°00'20" West 12.00 feet;
- 81) South 89°40'42" East 2012.72 feet;
- 82) North 0°15'04" West 2388.35 feet;
- 83) North 0°14'33" West 275.81 feet;
- 84) South 89°42'02" West 1332.63 feet;
- 85) North 0°31'06" West 2643.26 feet;
- 86) North 23°42'18" West 48.19 feet;
- 87) South 87°17'42" West 336.88 feet;
- 88) North 5°19'52" West 520.19 feet;
- 89) North 55°18'12" East 465.38 feet;
- 90) North 0°16'09" West 471.62 feet;
- 91) North 89°35'17" West 467.83 feet;
- 92) South 32.38 feet;
- 93) West 96.86 feet;
- 94) Southwesterly 373.74 feet along the arc of an 11,589.16 ft. radius curve to the right, the chord bears South 16°46'26" West 373.72 feet;
- 95) South 20°08'32" West 606.56 feet;
- 96) Southwesterly 202.09 feet along the arc of an 11,579.16 ft. radius curve to the right, the chord bears South 21°11'51" West 202.09 feet;
- 97) South 21°47'48" West 640.30 feet;
- 98) South 27°47'48" West 257.33 feet;
- 99) South 0°47'45" East 139.25 feet;
- 100) South 26°53'57" West 725.43 feet;
- 101) West 385.02 feet;
- 102) North 30°38'32" East 315.02 feet;
- 103) North 28°10'12" East 594.13 feet;
- 104) North 25°48'51" East 345.46 feet;
- 105) North 24°53'53" East 52.71 feet;
- 106) North 46°41'17" East 125.36 feet;
- 107) North 0°47'47" West 210.36 feet;
- 108) South 89°42'50" West 0.58 feet;
- 109) North 0°31'10" West 1673.34 feet;
- 110) Northwesternly 24.37 feet along the arc of a 791.34 ft. radius curve to the right, the chord bears North 44°50'08" West 24.37 feet;
- 111) North 43°57'10" West 2324.48 feet;
- 112) Northwesternly 615.05 ft. along the arc of a 1357.47 ft. radius curve to the left, the chord bears North 56°55'58" West 609.81 feet;

- 113) North 69°54'46" West 562.35 feet;
- 114) North 0°41'24" East 79.51 feet;
- 115) North 0°38'14" East 789.37 feet;
- 116) North 89°55'46" West 578.16 feet;
- 117) South 0°28'46" East 503.51 feet;
- 118) North 69°54'46" West 512.46 feet;
- 119) North 338.62 feet;
- 120) South 74°16'13" West 570.52 feet;
- 121) South 93.13 feet;
- 122) West 500.39 feet;
- 123) North 80°33'16" West 316.44 feet;
- 124) South 187.65 feet;
- 125) South 74°16'14" West 68.02 feet;
- 126) Southwesterly 199.93 ft. along the arc of a 4830.00 ft. radius curve to the left, the chord bears South 73°05'03" West 199.91 feet;
- 127) North 306.97 feet;
- 128) North 80°33'16" West 1059.35 feet;
- 129) Southwesterly 481.74 feet along the arc of a 1357.47 ft. radius curve to the left, the chord bears South 89°16'46" West 479.22 feet;
- 130) South 79°06'44" West 934.07 feet;
- 131) South 2°24'42" East 63.13 feet;
- 132) South 26°10'36" West 459.79 feet;
- 133) South 39°40'39" East 26.38 feet;
- 134) South 49°48'55" East 16.26 feet;
- 135) South 73°37'20" East 32.77 feet;
- 136) South 87°00'29" East 126.57 feet;
- 137) South 1405.87 feet;
- 138) South 7°03'57" East 123.400 feet;
- 139) North 41°19'25" East 0.45 feet;
- 140) South 0°00'58" West 488.91 feet;
- 141) South 87°52'33" West 15.01 feet;
- 142) South 0°37'31" West 633.44 feet;
- 143) South 89°45'40" West 509.37 feet;
- 144) South 482.23 feet;
- 145) South 3°36'25" East 574.41 feet;
- 146) South 5°45'52" East 92.12 feet;
- 147) South 15°37'45" East 224.18 feet;
- 148) South 20°33'57" West 87.21 feet;
- 149) South 27°45'08" West 197.11 feet;
- 150) South 82°43'34" East 261.70 feet;
- 151) South 0°56'40" East 494.35 feet;
- 152) North 89°59'27" West 142.233 feet;

- 153) South 0°38'07" West 234.70 feet;
154) North 70°45'29" West 602.01 feet;
155) South 19°17'19" West 4.45 feet;
156) North 70°24'34" West 1128.52 feet;
157) North 16°19'14" East 164.77 feet;
158) North 28°09'51" East 80.13 feet;
159) South 88°35'33" West 673.95 feet;
160) North 63°41'16" West 80.14 feet;
161) North 52°28'13" West 131.04 feet;
162) North 0°35'25" West 593.12 feet;
163) South 63°58'21" West 443.54 feet;
164) North 47°48'00" West 76.94 feet;
165) North 59°17'49" West 899.52 feet;
166) South 1°47'00" East 487.65 feet;
167) East 76.12 feet
168) South 0°45'19" West 693.28 feet;
169) North 89°23'59" West 1499.21 feet;
170) South 0°30'53" East 1979.96 feet;
171) South 80°17'19" East 670.93 feet;
172) South 396.00 feet;
173) North 89°35'32" East 103.24 feet;
174) South 25°20'32" West 497.00 feet;
175) South 75°24'28" East 660.00 feet;
176) South 67°54'28" East 69.22 feet;
177) North 41°22'20" East 708.90 feet;
178) Northeasterly 1410.81 along the arc of a 5760.00 ft. radius curve to the left, the chord bears North 34°51'32" East 1407.29 feet;
179) North 28°23'20" East 558.20 feet;
180) North 89°52'06" East 279.51 feet;
181) North 17°30'00" East 572.88 feet;
182) South 51°29'54" East 1349.66 feet;
183) South 33°24'52" West 139.93 feet;
184) South 63°23'33" West 322.39 feet;
185) South 357.62 feet;
186) East 945.53 feet;
187) South 148.17 feet;
188) South 1°05'06" West 462.31 feet;
189) North 89°45'59" East 429.91 feet;
190) South 0°08'17" East 1334.04 feet;
191) South 89°41'45" West 665.72 feet;
192) South 0°08'20" East 830.50 feet;
193) North 89°57'22" West 208.72 feet;

- 194) South 0°08'14" East 208.70 feet;
- 195) South 89°56'56" East 208.70 feet;
- 196) South 0°08'31" East 301.98 feet;
- 197) North 89°59'20" East 665.75 feet;
- 198) South 0°39'46" East 140.44 feet;
- 199) South 0°39'42" East 822.54 feet;
- 200) North 54°55'42" East 869.51 feet;
- 201) South 70°02'18" East 148.34 feet;
- 202) South 25°37'10" West 1354.90 feet;
- 203) North 64°49'03" West 211.00 feet;
- 204) South 25°38'13" West 345.08 feet;
- 205) South 64°48'08" East 211.03 feet;
- 206) South 25°37'11" West 454.04 feet;
- 207) South 64°23'07" East 108.36 feet;
- 208) South 0°39'00" East 166.16 feet;
- 209) West 1062.44 feet;
- 210) South 0°22'34" West 1.33 feet;
- 211) South 89°58'14" West 776.90 feet;
- 212) North 2°02'21" East 1100.86 feet;
- 213) South 52°30'00" West 406.89 feet;
- 214) South 40°16'00" West 318.70 feet;
- 215) South 30°56'00" West 581.76 feet;
- 216) South 1°08'06" East 109.13 feet;
- 217) South 0°05'18" East 957.00 feet;
- 218) West 1737.64 feet;
- 219) South 43°15'00" West 282.96 feet;
- 220) West 704.92;
- 221) South 155.26;
- 222) North 89°07'30" West 1297.20 feet;
- 223) North 0°53'22" West 1334.80 feet;
- 224) North 0°58'57" West 1316.34 feet;
- 225) South 89°42'22" East 1081.42 feet;
- 226) Northeasterly 785.00 feet along the arc of a 2722.90 ft. radius curve to the left, the chord bears North 10°46'15" East 782.28 feet;
- 227) North 1°34'47" East 379.85 feet;
- 228) North 2°55'38" East 172.07 feet;
- 229) North 89°55'32" West 40.07 feet;
- 230) Northeasterly 999.95 feet along the arc of a 2014.41 ft. radius curve to the right, the chord bears North 18°41'07" East 989.72 feet;
- 231) West 1556.48 feet;
- 232) North 0°36'54" West 388.86 feet;
- 233) South 89°49'58" West 1316.39 feet;

- 234) South $0^{\circ}42'52''$ East 1319.35 feet;
- 235) South $89^{\circ}20'43''$ West 2694.33 feet;
- 236) North $0^{\circ}12'13''$ West 2641.09 feet;
- 237) South $89^{\circ}23'37''$ West 2656.53 feet to the point of beginning.

(Area = 5,236.04 acres)

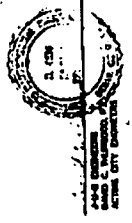
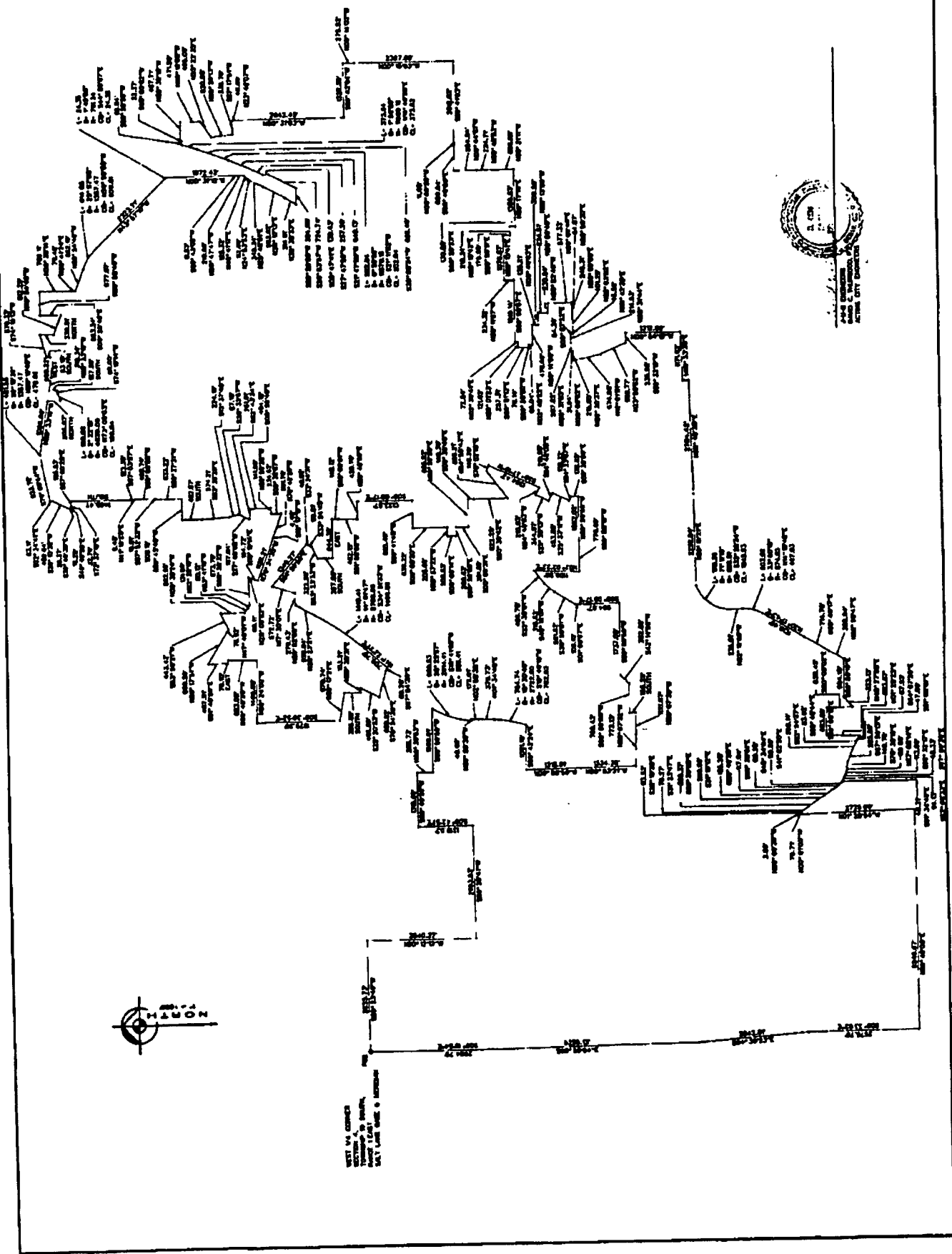


THIS DRAWING IS THE PROPERTY OF JLB ENGINEERS, INC. IT IS TO BE USED ONLY FOR THE PROJECT AND SITE SPECIFICALLY IDENTIFIED HEREON. IT IS NOT TO BE REPRODUCED, COPIED, OR TRANSMITTED IN ANY FORM OR BY ANY MEANS, ELECTRONIC OR MECHANICAL, INCLUDING PHOTOCOPYING, RECORDING, OR BY ANY INFORMATION STORAGE AND RETRIEVAL SYSTEM, WITHOUT THE WRITTEN PERMISSION OF JLB ENGINEERS, INC.

SANTAQUIN CITY
BOUNDARY DRAWING

DATE	DESCRIPTION

ENT 72904:2007 PG 14 of 14



WEST 1/4 CORNER
 SECTION 26, T4N, R10E,
 COUNTY OF KANE,
 STATE OF UTAH