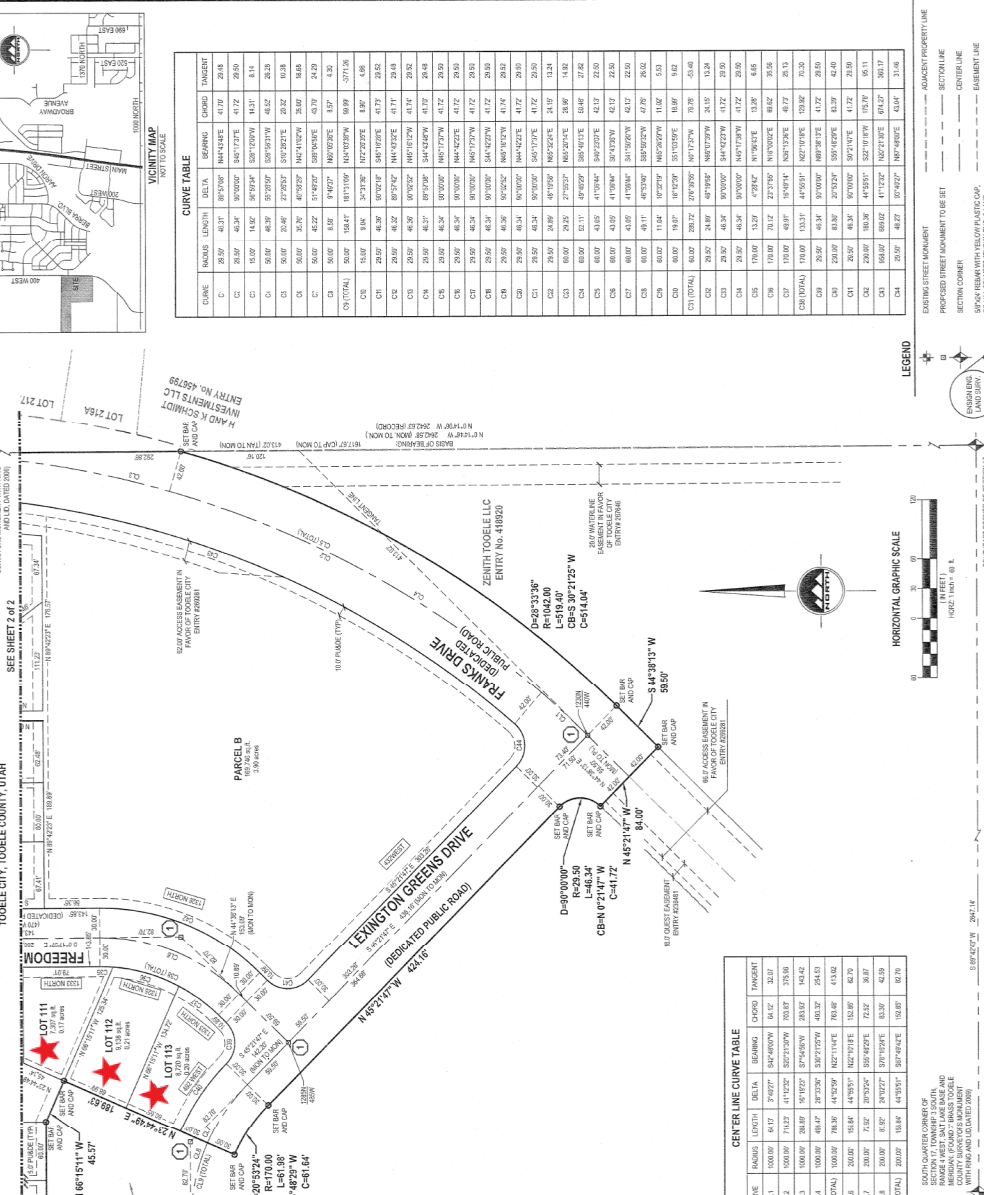


FINAL PLAT LEXINGTON GREENS AT OVERLAKE SUBDIVISION PHASE 1

SOUTHEAST QUARTER OF SECTION 17, TOWNSHIP 3
SOUTH, RANGE 4 WEST, SALT LAKE BASE AND MERIDIAN,
TOOELE COUNTY, UTUHE COUNTY, UTAH

SEE SHEET 2 of 2

SEE SHEET 2 of 2



CURVE TABLE

CURVE	RADIUS	LENGTH	BEARING	CHORD	TANGENT	
C1	20.67	48.37	S69°23'00" W	184.4742	41.17	28.84
C2	20.67	48.34	S90°20'00" W	184.1742	41.72	29.00
C3	18.09	118.82	S69°23'00" W	104.707979	118.17	63.11
C4	18.09	46.39	S72°59'30" W	104.707979	45.52	28.28
C5	18.09	20.48	S72°59'30" W	104.707979	20.52	10.28
C6	50.00	42.22	S4°52'30" E	169.924704	43.79	24.29
C7	50.00	8.09	S4°52'30" E	169.924704	8.39	4.58
C8	50.00	18.47	S11°17'30" E	162.147379	18.99	10.71
C9	50.00	46.36	S27°52'00" E	147.124704	47.72	25.43
C10	20.67	48.37	S69°23'00" W	184.1742	41.72	29.49
C11	20.67	48.34	S90°20'00" W	184.1742	41.72	29.49
C12	20.67	48.34	S90°20'00" W	184.1742	41.72	29.49
C13	20.67	48.34	S90°20'00" W	184.1742	41.72	29.49
C14	20.67	48.34	S90°20'00" W	184.1742	41.72	29.49
C15	20.67	48.34	S90°20'00" W	184.1742	41.72	29.49
C16	20.67	48.34	S90°20'00" W	184.1742	41.72	29.49
C17	20.67	48.34	S90°20'00" W	184.1742	41.72	29.49
C18	20.67	48.34	S90°20'00" W	184.1742	41.72	29.49
C19	20.67	48.34	S90°20'00" W	184.1742	41.72	29.49
C20	20.67	48.34	S90°20'00" W	184.1742	41.72	29.49
C21	20.67	48.34	S90°20'00" W	184.1742	41.72	29.49
C22	20.67	48.34	S90°20'00" W	184.1742	41.72	29.49
C23	20.67	48.34	S90°20'00" W	184.1742	41.72	29.49
C24	20.67	48.34	S90°20'00" W	184.1742	41.72	29.49
C25	20.67	48.34	S90°20'00" W	184.1742	41.72	29.49
C26	20.67	48.34	S90°20'00" W	184.1742	41.72	29.49
C27	20.67	48.34	S90°20'00" W	184.1742	41.72	29.49
C28	20.67	48.34	S90°20'00" W	184.1742	41.72	29.49
C29	20.67	48.34	S90°20'00" W	184.1742	41.72	29.49
C30	20.67	48.34	S90°20'00" W	184.1742	41.72	29.49
C31	20.67	48.34	S90°20'00" W	184.1742	41.72	29.49
C32	20.67	48.34	S90°20'00" W	184.1742	41.72	29.49
C33	20.67	48.34	S90°20'00" W	184.1742	41.72	29.49
C34	20.67	48.34	S90°20'00" W	184.1742	41.72	29.49
C35	20.67	48.34	S90°20'00" W	184.1742	41.72	29.49
C36	20.67	48.34	S90°20'00" W	184.1742	41.72	29.49
C37	20.67	48.34	S90°20'00" W	184.1742	41.72	29.49
C38	20.67	48.34	S90°20'00" W	184.1742	41.72	29.49
C39	20.67	48.34	S90°20'00" W	184.1742	41.72	29.49
C40	20.67	48.34	S90°20'00" W	184.1742	41.72	29.49
C41	20.67	48.34	S90°20'00" W	184.1742	41.72	29.49
C42	20.67	48.34	S90°20'00" W	184.1742	41.72	29.49
C43	20.67	48.34	S90°20'00" W	184.1742	41.72	29.49
C44	20.67	48.34	S90°20'00" W	184.1742	41.72	29.49
C45	20.67	48.34	S90°20'00" W	184.1742	41.72	29.49
C46	20.67	48.34	S90°20'00" W	184.1742	41.72	29.49
C47	20.67	48.34	S90°20'00" W	184.1742	41.72	29.49
C48	20.67	48.34	S90°20'00" W	184.1742	41.72	29.49
C49	20.67	48.34	S90°20'00" W	184.1742	41.72	29.49
C50	20.67	48.34	S90°20'00" W	184.1742	41.72	29.49

VICINITY MAP

NOT TO SCALE

CENTER LINE CURVE TABLE

CURVE	RADIUS	LENGTH	BEARING	CHORD	TANGENT	
C1	50.00	61.47	S70°00'00" W	54.645979	91.27	32.07
C2	50.00	71.23	S47°52'00" E	62.974279	103.67	35.58
C3	50.00	36.89	S70°00'00" W	32.754279	53.57	18.42
C4	50.00	48.14	S47°52'00" E	43.725794	70.47	24.53
C5	50.00	71.23	S47°52'00" E	62.974279	103.67	35.58
C6	50.00	61.47	S70°00'00" W	54.645979	91.27	32.07
C7	50.00	36.89	S70°00'00" W	32.754279	53.57	18.42
C8	50.00	48.14	S47°52'00" E	43.725794	70.47	24.53
C9	50.00	71.23	S47°52'00" E	62.974279	103.67	35.58
C10	50.00	61.47	S70°00'00" W	54.645979	91.27	32.07

ROCKY MOUNTAIN POWER COMPANY

I HEREBY GRANT AND CONVEY TO THE COUNTY OF UTUHE COUNTY, UTAH, ALL THE RIGHTS AND OBLIGATIONS OF UTILITY FACILITIES... THE PUBLIC UTILITY DISTRICT... TO THE PUBLIC UTILITY DISTRICT... TO BE USED AS A PART OF THE... TO BE USED AS A PART OF THE... TO BE USED AS A PART OF THE...

DOMINION ENERGY

I HEREBY GRANT AND CONVEY TO THE COUNTY OF UTUHE COUNTY, UTAH, ALL THE RIGHTS AND OBLIGATIONS OF UTILITY FACILITIES... THE PUBLIC UTILITY DISTRICT... TO THE PUBLIC UTILITY DISTRICT... TO BE USED AS A PART OF THE... TO BE USED AS A PART OF THE... TO BE USED AS A PART OF THE...

LIMITED LIABILITY COMPANY ACKNOWLEDGMENT

STATE OF UTAH, County of Tooele

On the _____ day of _____, 2019, the following Limited Liability Company, **Lexington Greens at Overlake Subdivision Phase 1**, was formed by the undersigned persons whose names are listed below and who are the members of the company. The undersigned persons are the members of the company and are bound by the terms and conditions of the company's articles of incorporation and the company's operating agreement. The undersigned persons are the members of the company and are bound by the terms and conditions of the company's articles of incorporation and the company's operating agreement.

Signature of _____

OWNERS DEDICATION AND CONSENT TO RECORD

LEXINGTON GREENS AT OVERLAKE SUBDIVISION PHASE 1

This document certifies that the undersigned owners of the property have reviewed and approved the plat and consent to the recording of the same. The undersigned owners are the owners of the property and are bound by the terms and conditions of the plat. The undersigned owners are the owners of the property and are bound by the terms and conditions of the plat.

Signature of _____

APPROVED THIS _____ DAY OF _____, 2019, BY THE TOOELE CITY COUNCIL.

TOWNE CLERK _____

APPROVED THIS 3rd DAY OF July, 2019, BY THE TOOELE CITY COUNCIL.

TOWNE CLERK _____

APPROVED THIS 3rd DAY OF July, 2019, BY THE TOOELE CITY COUNCIL.

TOWNE CLERK _____

APPROVED THIS 3rd DAY OF July, 2019, BY THE TOOELE CITY COUNCIL.

TOWNE CLERK _____

COUNTY SURVEY DEPARTMENT APPROVAL

APPROVED THIS 3rd DAY OF July, 2019, BY THE TOOELE COUNTY SURVEY DEPARTMENT.

COUNTY DEVELOPMENT APPROVAL

APPROVED THIS 3rd DAY OF July, 2019, BY THE TOOELE COUNTY DEVELOPMENT DEPARTMENT.

COUNTY HEALTH DEPARTMENT APPROVAL

APPROVED THIS 3rd DAY OF July, 2019, BY THE TOOELE COUNTY HEALTH DEPARTMENT.

CITY ENGINEER'S APPROVAL

APPROVED THIS 3rd DAY OF July, 2019, BY THE CITY ENGINEER.

CITY ATTORNEY'S APPROVAL

APPROVED THIS 3rd DAY OF July, 2019, BY THE CITY ATTORNEY.

COUNTY TREASURER APPROVAL

APPROVED THIS 3rd DAY OF July, 2019, BY THE COUNTY TREASURER.

TOOELE COUNTY ENGINEER'S APPROVAL

APPROVED THIS 3rd DAY OF July, 2019, BY THE TOOELE COUNTY ENGINEER.

TOOELE COUNTY ENGINEER'S APPROVAL

APPROVED THIS 3rd DAY OF July, 2019, BY THE TOOELE COUNTY ENGINEER.

TOOELE COUNTY ENGINEER'S APPROVAL

APPROVED THIS 3rd DAY OF July, 2019, BY THE TOOELE COUNTY ENGINEER.

TOOELE COUNTY ENGINEER'S APPROVAL

APPROVED THIS 3rd DAY OF July, 2019, BY THE TOOELE COUNTY ENGINEER.

TOOELE COUNTY ENGINEER'S APPROVAL

APPROVED THIS 3rd DAY OF July, 2019, BY THE TOOELE COUNTY ENGINEER.

THIS MAP IS PROVIDED SOLELY FOR THE PURPOSE OF ASSISTING IN LOCATING THE PROPERTY AND COTTONWOOD TITLE INSURANCE AGENCY, INC. ASSUMES NO LIABILITY FOR VARIATION, IF ANY, WITH ANY ACTUAL SURVEY.

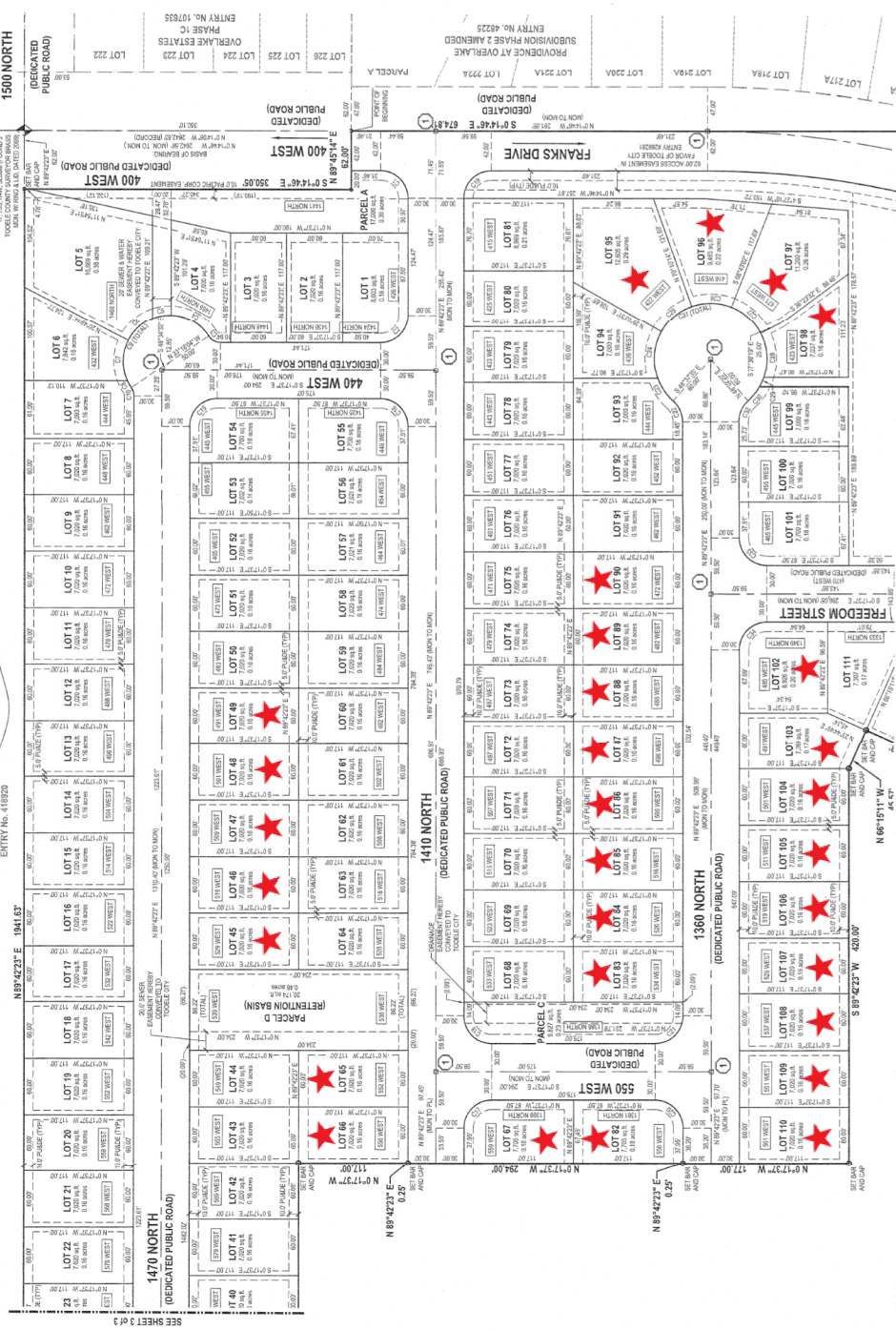
BK 21 PG 3

This map is provided solely for the purpose of assisting in locating the property and Cottonwood Title Insurance Agency, Inc. assumes no liability for variation, if any, with any actual survey.

LEXINGTON GREENS AT OVERLAKE PHASE 1 FINAL PLAT

LOCATED IN THE SECTION 17 TOWNSHIP 3 SOUTH, RANGE 4 WEST, SALT LAKE BASE AND MERIDIAN, TOOELE CITY, TOOELE COUNTY, UTAH
 ENTRY NO. 418250
 PERRY HOMES INC.

CURVE	POINTS	LENGTH	DELTA	BEARING	CHORD	TANGENT
C1	100.00	14.12	3.007°	S45°00'00"W	9.432	32.00
C2	100.00	14.12	41°27'00"	S50°15'00"W	70.817	30.96
C3	100.00	14.12	41°27'00"	S50°15'00"W	70.817	30.96
C4	100.00	14.12	41°27'00"	S50°15'00"W	70.817	30.96
C5	100.00	14.12	41°27'00"	S50°15'00"W	70.817	30.96
C6	100.00	14.12	41°27'00"	S50°15'00"W	70.817	30.96
C7	100.00	14.12	41°27'00"	S50°15'00"W	70.817	30.96
C8	100.00	14.12	41°27'00"	S50°15'00"W	70.817	30.96
C9	100.00	14.12	41°27'00"	S50°15'00"W	70.817	30.96
C10	100.00	14.12	41°27'00"	S50°15'00"W	70.817	30.96
C11	100.00	14.12	41°27'00"	S50°15'00"W	70.817	30.96
C12	100.00	14.12	41°27'00"	S50°15'00"W	70.817	30.96
C13	100.00	14.12	41°27'00"	S50°15'00"W	70.817	30.96
C14	100.00	14.12	41°27'00"	S50°15'00"W	70.817	30.96
C15	100.00	14.12	41°27'00"	S50°15'00"W	70.817	30.96
C16	100.00	14.12	41°27'00"	S50°15'00"W	70.817	30.96
C17	100.00	14.12	41°27'00"	S50°15'00"W	70.817	30.96
C18	100.00	14.12	41°27'00"	S50°15'00"W	70.817	30.96
C19	100.00	14.12	41°27'00"	S50°15'00"W	70.817	30.96
C20	100.00	14.12	41°27'00"	S50°15'00"W	70.817	30.96
C21	100.00	14.12	41°27'00"	S50°15'00"W	70.817	30.96
C22	100.00	14.12	41°27'00"	S50°15'00"W	70.817	30.96
C23	100.00	14.12	41°27'00"	S50°15'00"W	70.817	30.96
C24	100.00	14.12	41°27'00"	S50°15'00"W	70.817	30.96
C25	100.00	14.12	41°27'00"	S50°15'00"W	70.817	30.96
C26	100.00	14.12	41°27'00"	S50°15'00"W	70.817	30.96
C27	100.00	14.12	41°27'00"	S50°15'00"W	70.817	30.96
C28	100.00	14.12	41°27'00"	S50°15'00"W	70.817	30.96
C29	100.00	14.12	41°27'00"	S50°15'00"W	70.817	30.96
C30	100.00	14.12	41°27'00"	S50°15'00"W	70.817	30.96
C31	100.00	14.12	41°27'00"	S50°15'00"W	70.817	30.96
C32	100.00	14.12	41°27'00"	S50°15'00"W	70.817	30.96
C33	100.00	14.12	41°27'00"	S50°15'00"W	70.817	30.96
C34	100.00	14.12	41°27'00"	S50°15'00"W	70.817	30.96
C35	100.00	14.12	41°27'00"	S50°15'00"W	70.817	30.96
C36	100.00	14.12	41°27'00"	S50°15'00"W	70.817	30.96
C37	100.00	14.12	41°27'00"	S50°15'00"W	70.817	30.96
C38	100.00	14.12	41°27'00"	S50°15'00"W	70.817	30.96
C39	100.00	14.12	41°27'00"	S50°15'00"W	70.817	30.96
C40	100.00	14.12	41°27'00"	S50°15'00"W	70.817	30.96
C41	100.00	14.12	41°27'00"	S50°15'00"W	70.817	30.96
C42	100.00	14.12	41°27'00"	S50°15'00"W	70.817	30.96
C43	100.00	14.12	41°27'00"	S50°15'00"W	70.817	30.96
C44	100.00	14.12	41°27'00"	S50°15'00"W	70.817	30.96
C45	100.00	14.12	41°27'00"	S50°15'00"W	70.817	30.96
C46	100.00	14.12	41°27'00"	S50°15'00"W	70.817	30.96
C47	100.00	14.12	41°27'00"	S50°15'00"W	70.817	30.96
C48	100.00	14.12	41°27'00"	S50°15'00"W	70.817	30.96
C49	100.00	14.12	41°27'00"	S50°15'00"W	70.817	30.96
C50	100.00	14.12	41°27'00"	S50°15'00"W	70.817	30.96
C51	100.00	14.12	41°27'00"	S50°15'00"W	70.817	30.96
C52	100.00	14.12	41°27'00"	S50°15'00"W	70.817	30.96
C53	100.00	14.12	41°27'00"	S50°15'00"W	70.817	30.96
C54	100.00	14.12	41°27'00"	S50°15'00"W	70.817	30.96
C55	100.00	14.12	41°27'00"	S50°15'00"W	70.817	30.96
C56	100.00	14.12	41°27'00"	S50°15'00"W	70.817	30.96
C57	100.00	14.12	41°27'00"	S50°15'00"W	70.817	30.96
C58	100.00	14.12	41°27'00"	S50°15'00"W	70.817	30.96
C59	100.00	14.12	41°27'00"	S50°15'00"W	70.817	30.96
C60	100.00	14.12	41°27'00"	S50°15'00"W	70.817	30.96
C61	100.00	14.12	41°27'00"	S50°15'00"W	70.817	30.96
C62	100.00	14.12	41°27'00"	S50°15'00"W	70.817	30.96
C63	100.00	14.12	41°27'00"	S50°15'00"W	70.817	30.96
C64	100.00	14.12	41°27'00"	S50°15'00"W	70.817	30.96
C65	100.00	14.12	41°27'00"	S50°15'00"W	70.817	30.96
C66	100.00	14.12	41°27'00"	S50°15'00"W	70.817	30.96
C67	100.00	14.12	41°27'00"	S50°15'00"W	70.817	30.96
C68	100.00	14.12	41°27'00"	S50°15'00"W	70.817	30.96
C69	100.00	14.12	41°27'00"	S50°15'00"W	70.817	30.96
C70	100.00	14.12	41°27'00"	S50°15'00"W	70.817	30.96
C71	100.00	14.12	41°27'00"	S50°15'00"W	70.817	30.96
C72	100.00	14.12	41°27'00"	S50°15'00"W	70.817	30.96
C73	100.00	14.12	41°27'00"	S50°15'00"W	70.817	30.96
C74	100.00	14.12	41°27'00"	S50°15'00"W	70.817	30.96
C75	100.00	14.12	41°27'00"	S50°15'00"W	70.817	30.96
C76	100.00	14.12	41°27'00"	S50°15'00"W	70.817	30.96
C77	100.00	14.12	41°27'00"	S50°15'00"W	70.817	30.96
C78	100.00	14.12	41°27'00"	S50°15'00"W	70.817	30.96
C79	100.00	14.12	41°27'00"	S50°15'00"W	70.817	30.96
C80	100.00	14.12	41°27'00"	S50°15'00"W	70.817	30.96
C81	100.00	14.12	41°27'00"	S50°15'00"W	70.817	30.96
C82	100.00	14.12	41°27'00"	S50°15'00"W	70.817	30.96
C83	100.00	14.12	41°27'00"	S50°15'00"W	70.817	30.96
C84	100.00	14.12	41°27'00"	S50°15'00"W	70.817	30.96
C85	100.00	14.12	41°27'00"	S50°15'00"W	70.817	30.96
C86	100.00	14.12	41°27'00"	S50°15'00"W	70.817	30.96
C87	100.00	14.12	41°27'00"	S50°15'00"W	70.817	30.96
C88	100.00	14.12	41°27'00"	S50°15'00"W	70.817	30.96
C89	100.00	14.12	41°27'00"	S50°15'00"W	70.817	30.96
C90	100.00	14.12	41°27'00"	S50°15'00"W	70.817	30.96
C91	100.00	14.12	41°27'00"	S50°15'00"W	70.817	30.96
C92	100.00	14.12	41°27'00"	S50°15'00"W	70.817	30.96
C93	100.00	14.12	41°27'00"	S50°15'00"W	70.817	30.96
C94	100.00	14.12	41°27'00"	S50°15'00"W	70.817	30.96
C95	100.00	14.12	41°27'00"	S50°15'00"W	70.817	30.96
C96	100.00	14.12	41°27'00"	S50°15'00"W	70.817	30.96
C97	100.00	14.12	41°27'00"	S50°15'00"W	70.817	30.96
C98	100.00	14.12	41°27'00"	S50°15'00"W	70.817	30.96
C99	100.00	14.12	41°27'00"	S50°15'00"W	70.817	30.96
C100	100.00	14.12	41°27'00"	S50°15'00"W	70.817	30.96



SEE SHEET 1 of 3
 SEE SHEET 1 of 3
 SEE SHEET 1 of 3

LEGEND
 SECTION CORNER
 EXISTING STREET MANHOLE
 PROPOSED STREET MANHOLE
 SET OFF 2 FT. REBAR WITH YELLOW PLASTIC CAP OR NAL STAMPS "TODOLE ENR 5.0 AND 5.0"
 FUME
 PUBLIC-UTILITY & SPRING EMBARKMENT
 BOUNDARY LINE
 CENTERLINE
 CURBLINE

NOTE
 1. PARCEL "A", "B", "C", "D", "E" TO BE OPEN SPACE AND TO BE OWNED AND MAINTAINED BY LEXINGTON GREENS HOME OWNERS ASSOCIATION, INC.
 2. SET OFF PINS TO BE PLACED IN TOP BACKS OF CURB, "A", "B" REBAR WITH YELLOW PLASTIC CAP OR NAL STAMPS "TODOLE ENR 5.0 AND 5.0" AT ALL OTHER LOT AND BOUNDARY CORNERS

KEY NOTES
 1. SET STREET DIMENSIONS TO TOOELE CITY STANDARDS AND SPECIFICATIONS

DEVELOPER
 ZENITH DEVELOPMENT LLC
 2040 MURRAY HOLLADAY ROAD, SUITE 204
 SALT LAKE CITY, UTAH 84117
 801-426-3735

ENGIN
 PROJECT NUMBER: 2009
 MANAGER: D. HESMAN
 DRAWN BY: C. DODD
 CHECKED BY: D. HESMAN
 DATE: 08/09

LEXINGTON GREENS AT OVERLAKE PHASE 1
 FINAL PLAT
 LOCATED IN THE SECTION 17 TOWNSHIP 3 SOUTH, RANGE 4 WEST, SALT LAKE BASE AND MERIDIAN, TOOELE CITY, TOOELE COUNTY, UTAH

SH21 PG 3

