



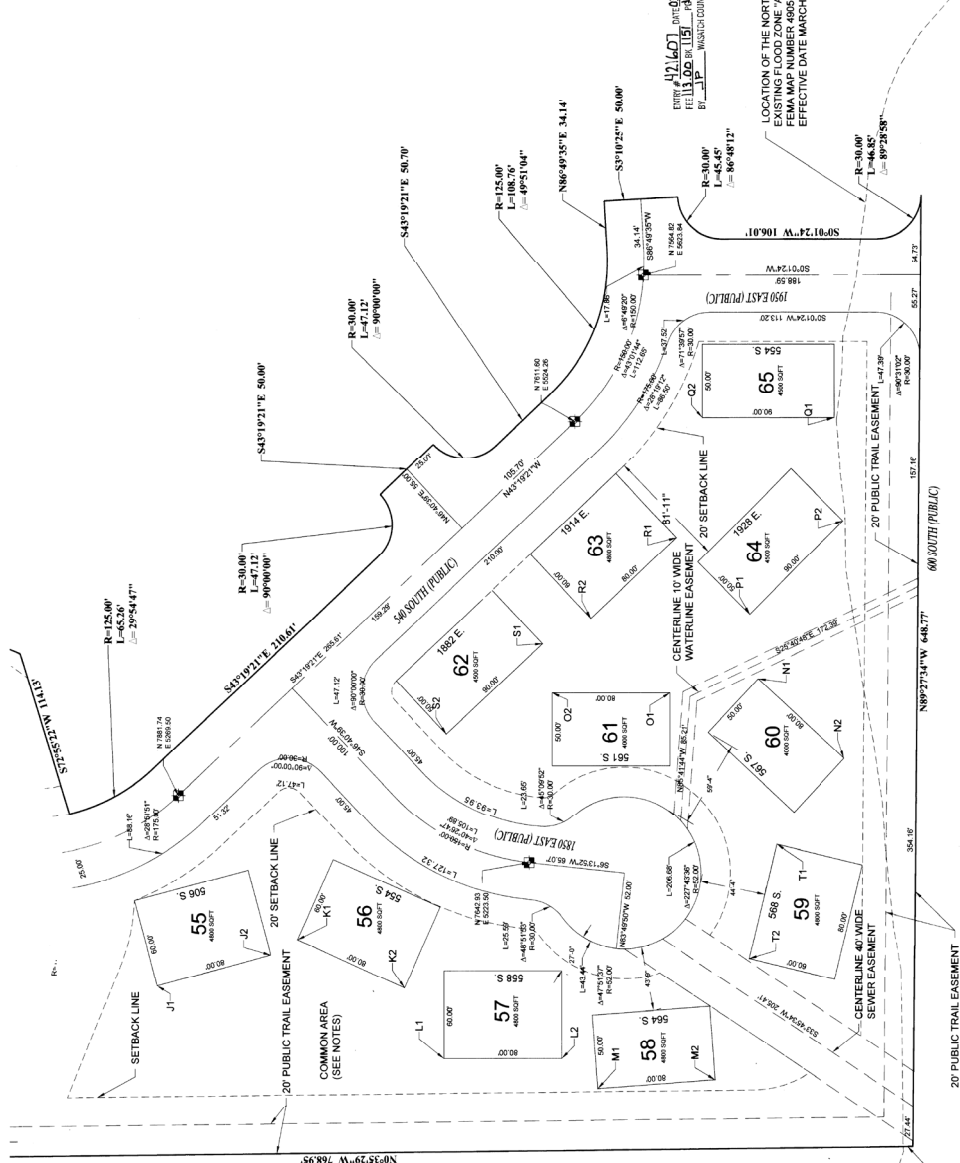


**BEAUFONTAINE PUD PHASE 3**  
 LOCATED IN THE NORTHEAST QUARTER SECTION 4,  
 TOWNSHIP 4 SOUTH, RANGE 5 EAST, SALT LAKE BASE AND MERIDIAN  
 WASATCH COUNTY, UTAH

This map is provided solely for the purpose of assisting in locating the property and Cottonwood. The insurance agency, its agents, and its liability are not liable for any errors or omissions on this map.

- FOUND SECTION CORNER
- MONUMENT (FIG. 4.10)
- SET PROPERTY CORNER - 5' IF REMA & CP (UNLESS OTHERWISE NOTED)
- STREET MONUMENT TO BE SET
- PROPOSED FIRE HYDRANT
- PROPOSED STREET LIGHT
- BOUNDARY LINE
- STREET CENTERLINE
- PUBLIC UTILITY EASEMENT 10' TYPICAL
- LOT SETBACK

Point #	Northing	Easting	Description
700	7896.22	5139.81	J1
701	7818.94	5160.52	J2
702	7800.99	5170.81	K1
703	7723.03	5138.24	K2
704	7703.84	5098.26	L1
705	7623.84	5098.88	L2
706	7596.37	5098.64	M1
707	7516.59	5075.52	M2
708	7487.18	5048.69	N1
709	7428.60	5204.21	N2
710	7347.14	5339.21	O1
711	7267.14	5339.21	O2
712	7462.26	5282.75	P1
713	7428.26	5456.39	P2
714	7324.67	5528.79	O1
715	7254.67	5528.82	O2
716	7542.72	5444.90	R1
717	7500.82	5390.01	R2
718	7533.72	5372.82	S1
719	7699.20	5311.07	S2
720	7474.68	5235.84	T1
721	7493.35	5197.87	T2
722	8762.89	5189.37	U1
723	8865.89	5189.37	U2
724	8965.89	5189.37	V1
725	8965.89	5189.37	V2



**GILSON ENGINEERING**  
 CONSULTING ENGINEERS AND SURVEYORS  
 www.gilsonengineering.com

Project Office:  
 1001 S. 1200 E. Suite 100  
 Salt Lake City, UT 84119  
 Phone: (801) 371-1481  
 Fax: (801) 371-1481