



EAGLEGATE & LAKESIDE DRIVE ROADWAY DESCRIPTIONS:

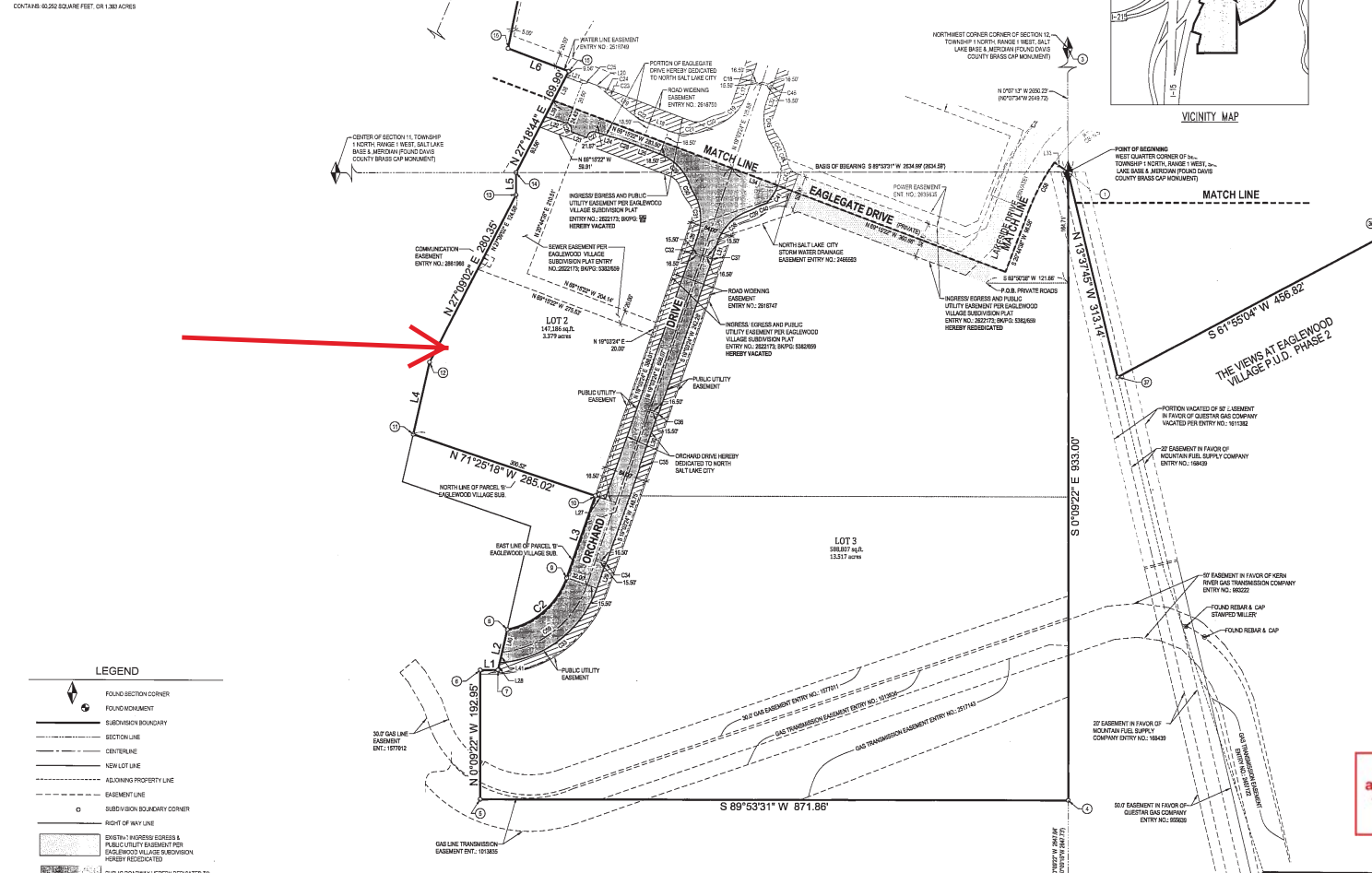
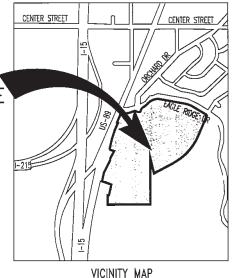
BEARING AT A POINT ON THE SOUTH LINE OF EAGLEGATE DRIVE AND THE EAST LINE OF LAKESIDE DRIVE, POINT OF BEGINNING, SOUTH 02°00'00" EAST, A DISTANCE OF 121.86 FEET...

EAGLEWOOD VILLAGE SUBDIVISION (AMENDED)

VACATING, AMENDING AND RE-SUBDIVIDING LOTS 1, 2, 3, 4, & 5, EAGLEWOOD VILLAGE SUBDIVISION LOCATED IN THE EAST HALF (E 1/2) OF SECTION 11 AND THE WEST HALF (W 1/2) OF SECTION 12...



POINT TABLE, LINE TABLE, and CURVE TABLE with columns for POINT NO., BEARING, DISTANCE, LINE NO., DIRECTION, LENGTH, CURVE NO., RADIUS, LENGTH, DELTA, BEARING, and CHORD.



LEGEND table with symbols for various map features like road corners, boundaries, easements, and utility lines.

This map is provided solely for the purpose of assisting in locating the property and Cottonwood Title Insurance Agency, Inc. assumes no liability for variation, if any, with any actual survey.

McNEIL ENGINEERING logo and contact information, including address and phone numbers.

DAVIS COUNTY RECORDER information, including recording date and time.

5411-2