



# SILVER CREEK VILLAGE CENTER LOT 2 SUBDIVISION

LOCATED IN THE SOUTHWEST QUARTER OF SECTION 15  
TOWNSHIP 1 SOUTH, RANGE 4 EAST,  
SALT LAKE BASE AND MERIDIAN  
SUMMIT COUNTY, UTAH

## LEGAL DESCRIPTION SILVER CREEK VILLAGE CENTER LOT 2:

ALL of Lot 2 of the Silver Creek Village Center Subdivision, recorded April 04, 2017 in the office of the Summit County Recorder as Entry number 0069786, Lot 5 being located in the Southwest quarter of Section 15, Township 1 South, Range 4 East, Salt Lake Base & Meridian.

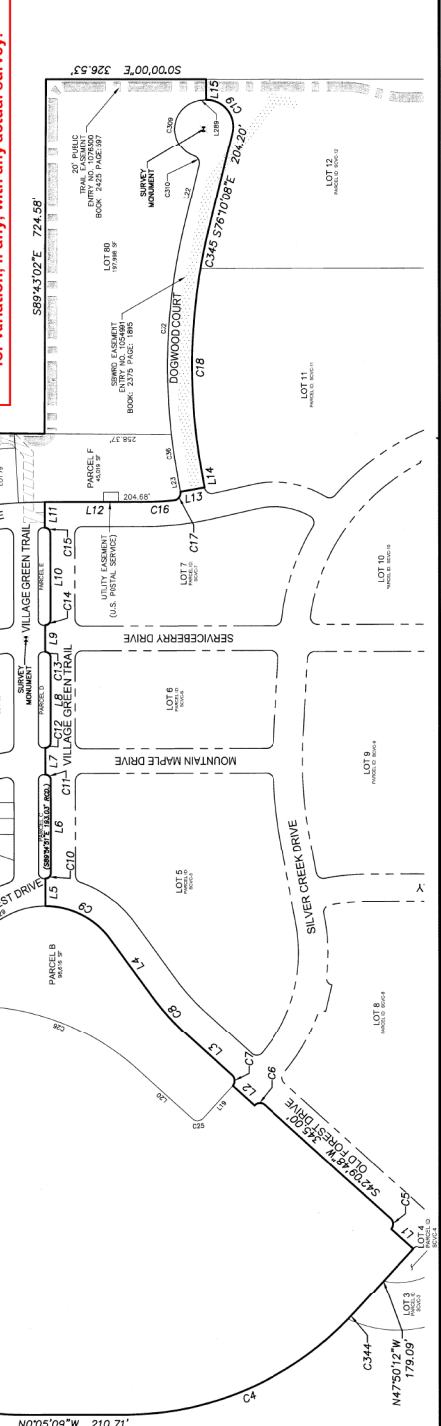
Contains 83.78 acres, 3,649,510 square feet.

Contains 83 ac.

ADDRESS TABLE	STREET NAME	STREET NUMBER
1	Coniferflow Way	44
2	Coniferflow Way	45
3	Coniferflow Way	46
4	Coniferflow Way	47
5	Coniferflow Way	48
6	Coniferflow Way	49
7	Coniferflow Way	50
8	Coniferflow Way	51
9	Coniferflow Way	52
10	Coniferflow Way	53
11	Coniferflow Way	54
12	Coniferflow Way	55
13	Coniferflow Way	56
14	Coniferflow Way	57
15	Coniferflow Way	58
16	Coniferflow Way	59
17	Coniferflow Way	60
18	Coniferflow Way	61
19	Coniferflow Way	62
20	Coniferflow Way	63
21	Coniferflow Way	64
22	Coniferflow Way	65
23	Coniferflow Way	66
24	Coniferflow Way	67
25	Coniferflow Way	68
26	Coniferflow Way	69
27	Coniferflow Way	70
28	Coniferflow Way	71
29	Coniferflow Way	72
30	Coniferflow Way	73
31	Coniferflow Way	74
32	Coniferflow Way	75
33	Coniferflow Way	76
34	Coniferflow Way	77
35	Coniferflow Way	78
36	Coniferflow Way	79
37	Coniferflow Way	80
38	Coniferflow Way	81
39	Coniferflow Way	82
40	Coniferflow Way	83
41	Coniferflow Way	84
42	Coniferflow Way	85

CURVE	RADIUS	LENGTH	DELTA	CHD BEARING	CHD LENGTH	LINE LENGTH	BEARING
C1	250.00'	381.71'	85.945366°	N87°32'22"E	347.00'	1.1	60.00'
C2	675.00'	981.14'	157°28'45"	N29°45'56"E	1029.45964'	1.2	60.00'
C3	675.00'	981.14'	307°28'28"	N18°41'00"E	1029.45964'	1.3	60.00'
C4	675.00'	981.14'	457°28'11"	N29°45'56"E	1029.45964'	1.4	60.00'
C5	675.00'	981.14'	607°27'54"	N18°41'00"E	1029.45964'	1.5	60.00'
C6	675.00'	981.14'	757°27'37"	N29°45'56"E	1029.45964'	1.6	60.00'
C7	675.00'	981.14'	907°27'20"	N18°41'00"E	1029.45964'	1.7	60.00'
C8	675.00'	981.14'	1057°27'03"	N29°45'56"E	1029.45964'	1.8	60.00'
C9	675.00'	981.14'	1207°26'46"	N18°41'00"E	1029.45964'	1.9	60.00'
C10	675.00'	981.14'	1357°26'29"	N29°45'56"E	1029.45964'	2.0	60.00'
C11	675.00'	981.14'	1507°26'12"	N18°41'00"E	1029.45964'	2.1	60.00'
C12	675.00'	981.14'	1657°25'55"	N29°45'56"E	1029.45964'	2.2	60.00'
C13	675.00'	981.14'	1807°25'38"	N18°41'00"E	1029.45964'	2.3	60.00'
C14	675.00'	981.14'	1957°25'21"	N29°45'56"E	1029.45964'	2.4	60.00'
C15	675.00'	981.14'	2107°25'04"	N18°41'00"E	1029.45964'	2.5	60.00'
C16	675.00'	981.14'	2257°24'47"	N29°45'56"E	1029.45964'	2.6	60.00'
C17	675.00'	981.14'	2407°24'30"	N18°41'00"E	1029.45964'	2.7	60.00'
C18	675.00'	981.14'	2557°24'13"	N29°45'56"E	1029.45964'	2.8	60.00'
C19	675.00'	981.14'	2707°23'56"	N18°41'00"E	1029.45964'	2.9	60.00'
C20	675.00'	981.14'	2857°23'39"	N29°45'56"E	1029.45964'	3.0	60.00'
C21	675.00'	981.14'	3007°23'22"	N18°41'00"E	1029.45964'	3.1	60.00'
C22	675.00'	981.14'	3157°23'05"	N29°45'56"E	1029.45964'	3.2	60.00'
C23	675.00'	981.14'	3307°22'48"	N18°41'00"E	1029.45964'	3.3	60.00'
C24	675.00'	981.14'	3457°22'31"	N29°45'56"E	1029.45964'	3.4	60.00'
C25	675.00'	981.14'	3607°22'14"	N18°41'00"E	1029.45964'	3.5	60.00'
C26	675.00'	981.14'	3757°21'57"	N29°45'56"E	1029.45964'	3.6	60.00'
C27	675.00'	981.14'	3907°21'40"	N18°41'00"E	1029.45964'	3.7	60.00'
C28	675.00'	981.14'	4057°21'23"	N29°45'56"E	1029.45964'	3.8	60.00'
C29	675.00'	981.14'	4207°21'06"	N18°41'00"E	1029.45964'	3.9	60.00'
C30	675.00'	981.14'	4357°20'49"	N29°45'56"E	1029.45964'	4.0	60.00'
C31	675.00'	981.14'	4507°20'32"	N18°41'00"E	1029.45964'	4.1	60.00'
C32	675.00'	981.14'	4657°20'15"	N29°45'56"E	1029.45964'	4.2	60.00'
C33	675.00'	981.14'	4807°19'58"	N18°41'00"E	1029.45964'	4.3	60.00'
C34	675.00'	981.14'	4957°19'41"	N29°45'56"E	1029.45964'	4.4	60.00'
C35	675.00'	981.14'	5107°19'24"	N18°41'00"E	1029.45964'	4.5	60.00'
C36	675.00'	981.14'	5257°19'07"	N29°45'56"E	1029.45964'	4.6	60.00'
C37	675.00'	981.14'	5407°18'50"	N18°41'00"E	1029.45964'	4.7	60.00'
C38	675.00'	981.14'	5557°18'33"	N29°45'56"E	1029.45964'	4.8	60.00'
C39	675.00'	981.14'	5707°18'16"	N18°41'00"E	1029.45964'	4.9	60.00'
C40	675.00'	981.14'	5857°17'59"	N29°45'56"E	1029.45964'	5.0	60.00'
C41	675.00'	981.14'	6007°17'42"	N18°41'00"E	1029.45964'	5.1	60.00'
C42	675.00'	981.14'	6157°17'25"	N29°45'56"E	1029.45964'	5.2	60.00'
C43	675.00'	981.14'	6307°17'08"	N18°41'00"E	1029.45964'	5.3	60.00'
C44	675.00'	981.14'	6457°16'51"	N29°45'56"E	1029.45964'	5.4	60.00'
C45	675.00'	981.14'	6607°16'34"	N18°41'00"E	1029.45964'	5.5	60.00'
C46	675.00'	981.14'	6757°16'17"	N29°45'56"E	1029.45964'	5.6	60.00'
C47	675.00'	981.14'	6907°16'00"	N18°41'00"E	1029.45964'	5.7	60.00'
C48	675.00'	981.14'	7057°15'43"	N29°45'56"E	1029.45964'	5.8	60.00'
C49	675.00'	981.14'	7207°15'26"	N18°41'00"E	1029.45964'	5.9	60.00'
C50	675.00'	981.14'	7357°15'09"	N29°45'56"E	1029.45964'	6.0	60.00'
C51	675.00'	981.14'	7507°14'52"	N18°41'00"E	1029.45964'	6.1	60.00'
C52	675.00'	981.14'	7657°14'35"	N29°45'56"E	1029.45964'	6.2	60.00'
C53	675.00'	981.14'	7807°14'18"	N18°41'00"E	1029.45964'	6.3	60.00'
C54	675.00'	981.14'	7957°14'01"	N29°45'56"E	1029.45964'	6.4	60.00'
C55	675.00'	981.14'	8107°13'44"	N18°41'00"E	1029.45964'	6.5	60.00'
C56	675.00'	981.14'	8257°13'27"	N29°45'56"E	1029.45964'	6.6	60.00'
C57	675.00'	981.14'	8407°13'10"	N18°41'00"E	1029.45964'	6.7	60.00'
C58	675.00'	981.14'	8557°12'53"	N29°45'56"E	1029.45964'	6.8	60.00'
C59	675.00'	981.14'	8707°12'36"	N18°41'00"E	1029.45964'	6.9	60.00'
C60	675.00'	981.14'	8857°12'19"	N29°45'56"E	1029.45964'	7.0	60.00'
C61	675.00'	981.14'	9007°12'02"	N18°41'00"E	1029.45964'	7.1	60.00'
C62	675.00'	981.14'	9157°11'45"	N29°45'56"E	1029.45964'	7.2	60.00'
C63	675.00'	981.14'	9307°11'28"	N18°41'00"E	1029.45964'	7.3	60.00'
C64	675.00'	981.14'	9457°11'11"	N29°45'56"E	1029.45964'	7.4	60.00'
C65	675.00'	981.14'	9607°10'54"	N18°41'00"E	1029.45964'	7.5	60.00'
C66	675.00'	981.14'	9757°10'37"	N29°45'56"E	1029.45964'	7.6	60.00'
C67	675.00'	981.14'	9907°10'20"	N18°41'00"E	1029.45964'	7.7	60.00'
C68	675.00'	981.14'	10057°10'03"	N29°45'56"E	1029.45964'	7.8	60.00'
C69	675.00'	981.14'	10207°9'46"	N18°41'00"E	1029.45964'	7.9	60.00'
C70	675.00'	981.14'	10357°9'29"	N29°45'56"E	1029.45964'	8.0	60.00'
C71	675.00'	981.14'	10507°9'12"	N18°41'00"E	1029.45964'	8.1	60.00'
C72	675.00'	981.14'	10657°8'55"	N29°45'56"E	1029.45964'	8.2	60.00'
C73	675.00'	981.14'	10807°8'38"	N18°41'00"E	1029.45964'	8.3	60.00'
C74	675.00'	981.14'	10957°8'21"	N29°45'56"E	1029.45964'	8.4	60.00'
C75	675.00'	981.14'	11107°8'04"	N18°41'00"E	1029.45964'	8.5	60.00'
C76	675.00'	981.14'	11257°7'47"	N29°45'56"E	1029.45964'	8.6	60.00'
C77	675.00'	981.14'	11407°7'30"	N18°41'00"E	1029.45964'	8.7	60.00'
C78	675.00'	981.14'	11557°7'13"	N29°45'56"E	1029.45964'	8.8	60.00'
C79	675.00'	981.14'	11707°6'56"	N18°41'00"E	1029.45964'	8.9	60.00'
C80	675.00'	981.14'	11857°6'39"	N29°45'56"E	1029.45964'	9.0	60.00'
C81	675.00'	981.14'	12007°6'22"	N18°41'00"E	1029.45964'	9.1	60.00'
C82	675.00'	981.14'	12157°6'05"	N29°45'56"E	1029.45964'	9.2	60.00'
C83	675.00'	981.14'	12307°5'48"	N18°41'00"E	1029.45964'	9.3	60.00'
C84	675.00'	981.14'	12457°5'31"	N29°45'56"E	1029.45964'	9.4	60.00'
C85	675.00'	981.14'	12607°5'14"	N18°41'00"E	1029.45964'	9.5	60.00'
C86	675.00'	981.14'	12757°4'57"	N29°45'56"E	1029.45964'	9.6	60.00'
C87	675.00'	981.14'	12907°4'40"	N18°41'00"E	1029.45964'	9.7	60.00'
C88	675.00'	981.14'	13057°4'23"	N29°45'56"E	1029.45964'	9.8	60.00'
C89	675.00'	981.14'	13207°4'06"	N18°41'00"E	1029.45964'	9.9	60.00'
C90	675.00'	981.14'	13357°3'49"	N29°45'56"E	1029.45964'	10.0	60.00'
C91	675.00'	981.14'	13507°3'32"	N18°41'00"E	1029.45964'	10.1	60.00'
C92	675.00'	981.14'	13657°3'15"	N29°45'56"E	1029.45964'	10.2	60.00'
C93	675.00'	981.14'	13807°2'58"	N18°41'00"E	1029.45964'	10.3	60.00'
C94	675.00'	981.14'	13957°2'41"	N29°45'56"E	1029.45964'	10.4	60.00'
C95	675.00'	981.14'	14107°2'24"	N18°41'00"E	1029.45964'	10.5	60.00'
C96	675.00'	981.14'	14257°2'07"	N29°45'56"E	1029.45964'	10.6	60.00'
C97	675.00'	981.14'	14407°1'50"	N18°41'00"E	1029.45964'	10.7	60.00'
C98	675.00'	981.14'	14557°1'33"	N29°45'56"E	1029.45964'	10.8	60.00'
C99	675.00'	981.14'	14707°1'16"	N18°41'00"E	1029.45964'	10.9	60.00'
C100	675.00'	981.14'	14857°0'59"	N29°45'56"E	1029.45964'	11.0	60.00'

This map is provided solely for the purpose of assisting in locating the property and Cottonwood Title Insurance Agency, Inc. assumes no liability for variation, if any, with any actual survey.



ENTRY NO. 01102101  
FILED IN THE OFFICE OF THE SUMMIT COUNTY RECORDER  
ON 03/20/2015 AT 10:30 AM MDT

DEVELOPMENT STANDARDS  
See Master Development Agreement, Entry 1002271, recorded @ 03/20/2015 in the office of the Summit County Recorder.

- Lot Use: Townhomes
- Lot Area: 4,000 SF
- Minimum Front Setback: 20 feet to front facade
- Minimum Side Setback: 20 feet to side lot line
- Minimum Rear Setback: 20 feet to any structure
- Minimum Setback from Existing Structure: 2 feet to stairs
- Maximum Height: 32 feet
- Surface Parking Setback: 20 feet from any lot line
- Not Sharing a Common Wall: 2 feet
- Parking Required: 2 off street spaces per unit

**CORNERPOINT**  
PROFESSIONAL LAND SURVEYS, INC.  
2075 So. 30 West Valley Parkway, UT 84770  
make.cornerspoint@gmail.com

LEGEND  
PUBLIC TRAIL EASEMENT  
ACCESS EASEMENT  
NON-EXCLUSIVE EASEMENT

SCALE: 1"=120'



# SILVER CREEK VILLAGE CENTER LOT 2 SUBDIVISION

LOCATED IN THE SOUTHWEST QUARTER OF SECTION 15  
TOWNSHIP 1 SOUTH, RANGE 4 EAST,  
SALT LAKE BASE AND MERIDIAN  
SUMMIT COUNTY, UTAH

ENTRY NO. 01102101  
 SUBDIVISION MAP  
 10/14/11 PM 8:28:47 AM  
 CORNERPOINT  
 PROFESSIONAL LAND SURVEY, INC.  
 2075 So. 500 West, Suite 100, Salt Lake City, UT 84115  
 (801) 487-8222  
 www.cornerpoint.com

SHEET 4 OF 4  
 9/26/2018  
 SILVER CREEK VILLAGE CENTER LOT 2 SUBDIVISION

CURVE TABLE			
CURVE	RADIUS	DELTA	CHD BEARING
C17	565.00	43.62	273.00°
C18	565.00	43.62	273.00°
C19	565.00	43.62	273.00°
C20	565.00	43.62	273.00°
C21	565.00	43.62	273.00°
C22	565.00	43.62	273.00°
C23	565.00	43.62	273.00°
C24	565.00	43.62	273.00°
C25	565.00	43.62	273.00°
C26	565.00	43.62	273.00°
C27	565.00	43.62	273.00°
C28	565.00	43.62	273.00°
C29	565.00	43.62	273.00°
C30	565.00	43.62	273.00°
C31	565.00	43.62	273.00°
C32	565.00	43.62	273.00°
C33	565.00	43.62	273.00°
C34	565.00	43.62	273.00°
C35	565.00	43.62	273.00°
C36	565.00	43.62	273.00°
C37	565.00	43.62	273.00°
C38	565.00	43.62	273.00°
C39	565.00	43.62	273.00°
C40	565.00	43.62	273.00°
C41	565.00	43.62	273.00°
C42	565.00	43.62	273.00°
C43	565.00	43.62	273.00°
C44	565.00	43.62	273.00°
C45	565.00	43.62	273.00°
C46	565.00	43.62	273.00°
C47	565.00	43.62	273.00°
C48	565.00	43.62	273.00°
C49	565.00	43.62	273.00°
C50	565.00	43.62	273.00°
C51	565.00	43.62	273.00°
C52	565.00	43.62	273.00°
C53	565.00	43.62	273.00°
C54	565.00	43.62	273.00°
C55	565.00	43.62	273.00°
C56	565.00	43.62	273.00°
C57	565.00	43.62	273.00°
C58	565.00	43.62	273.00°
C59	565.00	43.62	273.00°
C60	565.00	43.62	273.00°
C61	565.00	43.62	273.00°
C62	565.00	43.62	273.00°
C63	565.00	43.62	273.00°
C64	565.00	43.62	273.00°
C65	565.00	43.62	273.00°
C66	565.00	43.62	273.00°
C67	565.00	43.62	273.00°
C68	565.00	43.62	273.00°
C69	565.00	43.62	273.00°
C70	565.00	43.62	273.00°
C71	565.00	43.62	273.00°
C72	565.00	43.62	273.00°
C73	565.00	43.62	273.00°
C74	565.00	43.62	273.00°
C75	565.00	43.62	273.00°
C76	565.00	43.62	273.00°
C77	565.00	43.62	273.00°
C78	565.00	43.62	273.00°
C79	565.00	43.62	273.00°
C80	565.00	43.62	273.00°
C81	565.00	43.62	273.00°
C82	565.00	43.62	273.00°
C83	565.00	43.62	273.00°
C84	565.00	43.62	273.00°
C85	565.00	43.62	273.00°
C86	565.00	43.62	273.00°
C87	565.00	43.62	273.00°
C88	565.00	43.62	273.00°
C89	565.00	43.62	273.00°
C90	565.00	43.62	273.00°
C91	565.00	43.62	273.00°
C92	565.00	43.62	273.00°
C93	565.00	43.62	273.00°
C94	565.00	43.62	273.00°
C95	565.00	43.62	273.00°
C96	565.00	43.62	273.00°
C97	565.00	43.62	273.00°
C98	565.00	43.62	273.00°
C99	565.00	43.62	273.00°
C100	565.00	43.62	273.00°

## PRIVATE SEWER LATERAL EASEMENT

CURVE TABLE			
CURVE	RADIUS	DELTA	CHD BEARING
C101	565.00	43.62	273.00°
C102	565.00	43.62	273.00°
C103	565.00	43.62	273.00°
C104	565.00	43.62	273.00°
C105	565.00	43.62	273.00°
C106	565.00	43.62	273.00°
C107	565.00	43.62	273.00°
C108	565.00	43.62	273.00°
C109	565.00	43.62	273.00°
C110	565.00	43.62	273.00°
C111	565.00	43.62	273.00°
C112	565.00	43.62	273.00°
C113	565.00	43.62	273.00°
C114	565.00	43.62	273.00°
C115	565.00	43.62	273.00°
C116	565.00	43.62	273.00°
C117	565.00	43.62	273.00°
C118	565.00	43.62	273.00°
C119	565.00	43.62	273.00°
C120	565.00	43.62	273.00°
C121	565.00	43.62	273.00°
C122	565.00	43.62	273.00°
C123	565.00	43.62	273.00°
C124	565.00	43.62	273.00°
C125	565.00	43.62	273.00°
C126	565.00	43.62	273.00°
C127	565.00	43.62	273.00°
C128	565.00	43.62	273.00°
C129	565.00	43.62	273.00°
C130	565.00	43.62	273.00°
C131	565.00	43.62	273.00°
C132	565.00	43.62	273.00°
C133	565.00	43.62	273.00°
C134	565.00	43.62	273.00°
C135	565.00	43.62	273.00°
C136	565.00	43.62	273.00°
C137	565.00	43.62	273.00°
C138	565.00	43.62	273.00°
C139	565.00	43.62	273.00°
C140	565.00	43.62	273.00°
C141	565.00	43.62	273.00°
C142	565.00	43.62	273.00°
C143	565.00	43.62	273.00°
C144	565.00	43.62	273.00°
C145	565.00	43.62	273.00°
C146	565.00	43.62	273.00°
C147	565.00	43.62	273.00°
C148	565.00	43.62	273.00°
C149	565.00	43.62	273.00°
C150	565.00	43.62	273.00°
C151	565.00	43.62	273.00°
C152	565.00	43.62	273.00°
C153	565.00	43.62	273.00°
C154	565.00	43.62	273.00°
C155	565.00	43.62	273.00°
C156	565.00	43.62	273.00°
C157	565.00	43.62	273.00°
C158	565.00	43.62	273.00°
C159	565.00	43.62	273.00°
C160	565.00	43.62	273.00°
C161	565.00	43.62	273.00°
C162	565.00	43.62	273.00°
C163	565.00	43.62	273.00°
C164	565.00	43.62	273.00°
C165	565.00	43.62	273.00°
C166	565.00	43.62	273.00°
C167	565.00	43.62	273.00°
C168	565.00	43.62	273.00°
C169	565.00	43.62	273.00°
C170	565.00	43.62	273.00°
C171	565.00	43.62	273.00°
C172	565.00	43.62	273.00°
C173	565.00	43.62	273.00°
C174	565.00	43.62	273.00°
C175	565.00	43.62	273.00°
C176	565.00	43.62	273.00°
C177	565.00	43.62	273.00°
C178	565.00	43.62	273.00°
C179	565.00	43.62	273.00°
C180	565.00	43.62	273.00°
C181	565.00	43.62	273.00°
C182	565.00	43.62	273.00°
C183	565.00	43.62	273.00°
C184	565.00	43.62	273.00°
C185	565.00	43.62	273.00°
C186	565.00	43.62	273.00°
C187	565.00	43.62	273.00°
C188	565.00	43.62	273.00°
C189	565.00	43.62	273.00°
C190	565.00	43.62	273.00°
C191	565.00	43.62	273.00°
C192	565.00	43.62	273.00°
C193	565.00	43.62	273.00°
C194	565.00	43.62	273.00°
C195	565.00	43.62	273.00°
C196	565.00	43.62	273.00°
C197	565.00	43.62	273.00°
C198	565.00	43.62	273.00°
C199	565.00	43.62	273.00°
C200	565.00	43.62	273.00°

CURVE TABLE			
CURVE	RADIUS	DELTA	CHD BEARING
C201	565.00	43.62	273.00°
C202	565.00	43.62	273.00°
C203	565.00	43.62	273.00°
C204	565.00	43.62	273.00°
C205	565.00	43.62	273.00°
C206	565.00	43.62	273.00°
C207	565.00	43.62	273.00°
C208	565.00	43.62	273.00°
C209	565.00	43.62	273.00°
C210	565.00	43.62	273.00°
C211	565.00	43.62	273.00°
C212	565.00	43.62	273.00°
C213	565.00	43.62	273.00°
C214	565.00	43.62	273.00°
C215	565.00	43.62	273.00°
C216	565.00	43.62	273.00°
C217	565.00	43.62	273.00°
C218	565.00	43.62	273.00°
C219	565.00	43.62	273.00°
C220	565.00	43.62	273.00°
C221	565.00	43.62	273.00°
C222	565.00	43.62	273.00°
C223	565.00	43.62	273.00°
C224	565.00	43.62	273.00°
C225	565.00	43.62	273.00°
C226	565.00	43.62	273.00°
C227	565.00	43.62	273.00°
C228	565.00	43.62	273.00°
C229	565.00	43.62	273.00°
C230	565.00	43.62	273.00°
C231	565.00	43.62	273.00°
C232	565.00	43.62	273.00°
C233	565.00	43.62	273.00°
C234	565.00	43.62	273.00°
C235	565.00	43.62	273.00°
C236	565.00	43.62	273.00°
C237	565.00	43.62	273.00°
C238	565.00	43.62	273.00°
C239	565.00	43.62	273.00°
C240	565.00	43.62	273.00°
C241	565.00	43.62	273.00°
C242	565.00	43.62	273.00°
C243	565.00	43.62	273.00°
C244	565.00	43.62	273.00°
C245	565.00	43.62	273.00°
C246	565.00	43.62	273.00°
C247	565.00	43.62	273.00°
C248	565.00	43.62	273.00°
C249	565.00	43.62	273.00°
C250	565.00	43.62	273.00°

This map is provided solely for the purpose of assisting in locating the property and Cottonwood Title Insurance Agency, Inc. assumes no liability for variation, if any, with any actual survey.

## ACCESS EASEMENT

CURVE TABLE			
CURVE	RADIUS	DELTA	CHD BEARING
C251	565.00	43.62	273.00°
C252	565.00	43.62	273.00°
C253	565.00	43.62	273.00°
C254	565.00	43.62	273.00°
C255	565.00	43.62	273.00°
C256	565.00	43.62	273.00°
C257	565.00	43.62	273.00°
C258	565.00	43.62	273.00°
C259	565.00	43.62	273.00°
C260	565.00	43.62	273.00°
C261	565.00	43.62	273.00°
C262	565.00	43.62	273.00°
C263	565.00	43.62	273.00°
C264	565.00	43.62	273.00°
C265	565.00	43.62	273.00°
C266	565.00		