

MAIN STREET

N 00°44'08" W (DEED BASIS OF BEARING) 1956.41' (1955.84')

NORTHWEST CORNER OF SECTION 26, T. 6 S., R. 2 E., S.L.B. & M.

UNIVERSITY PARKWAY (1300 SOUTH)

NOTE: THIS PLAT SHALL NOT TERMINATE EXISTING EASEMENTS OF RECORD.

STATE PLANE COORDINATES GRID FACTOR= 0.999710

A	N 706679.14 E 1945821.64
B	N 706671.30 E 1946429.91
E	N 706038.71 E 1947073.30
F	N 706039.43 E 1947010.81
G	N 705874.49 E 1947008.90
H	N 705876.74 E 1946813.47
I	N 705866.75 E 1946813.36

SURVEYORS CERTIFICATE

I, CHARLES KARAT, DO HERE BY CERTIFY THAT I AM A REGISTERED LAND SURVEYOR AND THAT I HOLD CERTIFICATE NO. 8246 AS PRESCRIBED UNDER THE LAWS OF THE STATE OF UTAH. I FURTHER CERTIFY BY AUTHORITY OF THE OWNERS, I HAVE MADE A SURVEY OF THE TRACT OF LAND INTO LOTS, BLOCKS, STREETS, AND EASEMENTS AND THE SAME HAS BEEN CORRECTLY SURVEYED AND STAKED ON THE GROUND AS SHOWN ON THIS PLAT AND THAT THIS PLAT IS TRUE AND CORRECT.

BOUNDARY DESCRIPTION

BEGINNING AT A POINT NORTH 00°44'08" WEST 1956.41 FEET ALONG THE SECTION LINE AND EAST 57.74 FEET AND SOUTH 89°15'43" EAST 608.50 FEET AND SOUTH 89°06'37" EAST 245.70 FEET ALONG THE SOUTH LINE OF 1300 SOUTH, FROM THE WEST QUARTER CORNER OF SECTION 26, TOWNSHIP 6 SOUTH, RANGE 2 EAST, SALT LAKE BASE AND MERIDIAN; THENCE RUNNING SOUTH 89°06'37" EAST 66.00 FEET; THENCE SOUTH 00°43'48" WEST 261.41 FEET; THENCE SOUTH 89°16'12" EAST 330.25 FEET; THENCE SOUTH 00°47'40" EAST 382.38 FEET; THENCE NORTH 89°20'19" WEST 62.52 FEET; THENCE SOUTH 00°39'41" WEST 165.00 FEET; THENCE NORTH 89°20'19" WEST 195.50 FEET; THENCE SOUTH 00°39'41" WEST 10.00 FEET; THENCE NORTH 89°20'19" WEST 292.43 FEET; THENCE NORTH 00°44'17" WEST 128.17 FEET; THENCE SOUTH 89°15'43" EAST 8.00 FEET; THENCE NORTH 00°44'17" EAST 305.12 FEET; THENCE NORTH 89°15'43" WEST 57.25 FEET; THENCE NORTH 00°44'17" EAST 164.38 FEET; THENCE SOUTH 89°15'43" EAST 193.50 FEET; THENCE NORTH 00°44'17" EAST 201.85 FEET TO THE POINT OF BEGINNING.

CONTAINING 7.18 ACRES
BASIS OF BEARING: NORTH 00°44'08" WEST FROM THE WEST QUARTER CORNER OF SAID SECTION 26 TO THE NORTHWEST CORNER OF SAID SECTION 26.

DATE 7-3-91 SURVEYOR Charles Karat

OWNER'S DEDICATION

KNOW ALL MEN BY THESE PRESENTS THAT WE, ALL OF THE UNDERSIGNED OWNERS OF ALL OF THE PROPERTY DESCRIBED IN THE SURVEYOR'S CERTIFICATE HEREON AND SHOWN ON THIS MAP, HAVE CAUSED THE SAME TO BE SUBDIVIDED INTO LOTS, BLOCKS, STREETS AND EASEMENTS AND DO HEREBY DEDICATE THE STREETS AND OTHER PUBLIC AREAS AS INDICATED HEREON FOR PERPETUAL USE OF THE PUBLIC.

IN WITNESS WHEREOF WE HAVE HEREUNTO SET OUR HANDS THIS 3rd DAY OF July, A.D. 1991.

University Square Associates, Ltd., by University Square Associates, Inc., General Partner

By: J. Robert Johnson, President

ACKNOWLEDGEMENT

STATE OF UTAH S.S.
COUNTY OF UTAH

ON THE 3rd DAY OF July, A.D. 1991, PERSONALLY APPEARED BEFORE ME THE SIGNERS OF THE FORGOING DEDICATION WHO DULY ACKNOWLEDGE TO ME THAT THEY DID EXECUTE THE SAME.

MY COMMISSION EXPIRES 10-1-93 Dean Salvo
NOTARY PUBLIC

ACCEPTED BY THE CITY

THE CITY OF OREM, COUNTY OF UTAH, APPROVES THIS AMMENDED SUBDIVISION AND HEREBY ACCEPTS THE DEDICATION OF ALL STREETS, EASEMENTS, AND OTHER PARCELS OF LAND INTENDED FOR PUBLIC PURPOSES FOR THE PERPETUAL USE OF THE PUBLIC THIS 21 DAY OF July, A.D. 1991, BY RESOLUTION NO. PC-251-91

APPROVED David Berlin CITY MANAGER
ATTEST Melody Downey ENGINEER
CLERK-RECORDER

PLANNING COMMISSION APPROVAL

APPROVED THIS 17th DAY OF July, A.D. 1991, BY THE PLANNING COMMISSION

Edna R. Smith DIRECTOR-SECRETARY
Berkley Jarman CHAIRMAN, PLANNING COMMISSION

AMMENDED PLAT OF LOT 6 PLAT A

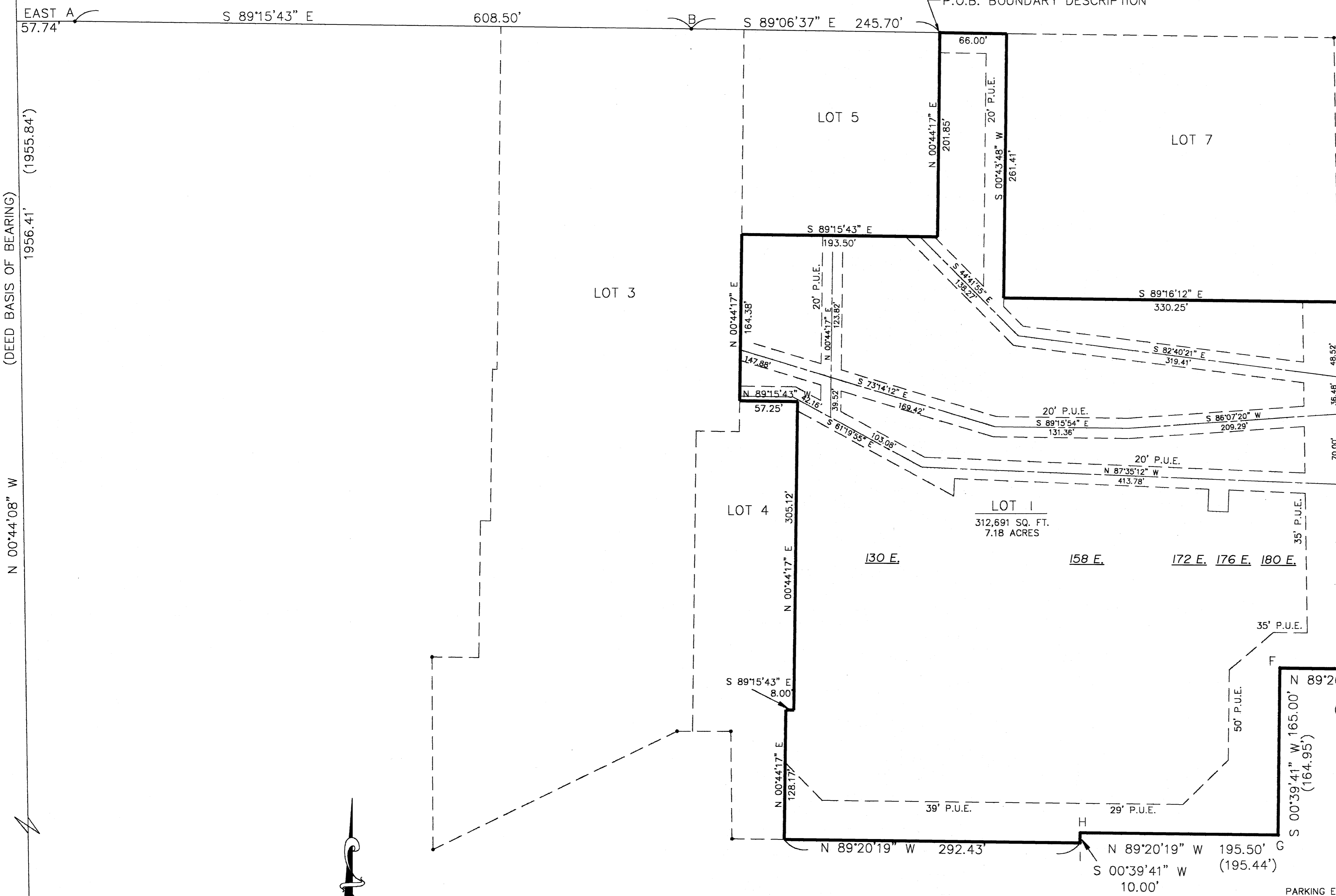
UNIVERSITY SQUARE

PLAT B

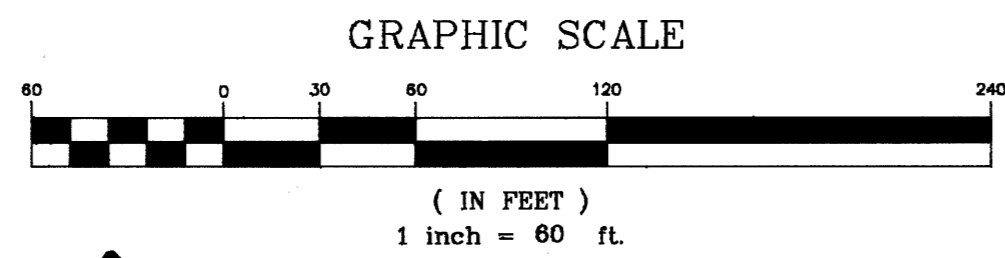
SCALE: 1" = 60'

ENT 31492 MAP # 4270
RIMA & FIELD UTAH CO RECORDER BY ME
1991 AUG 13 9:57 AM FEE 20.50
RECORDED FOR OREM CITY

SURVEYOR'S SEAL	NOTARY PUBLIC SEAL	CITY-COUNTY ENGINEER SEAL	CLERK-RECORDER SEAL
SEE SEAL ABOVE	SEE SEAL ABOVE		



WEST QUARTER CORNER OF SECTION 26, T. 6 S., R. 2 E., S.L.B. & M.



4270-54

UNIVERSITY SQUARE

PARKING EASEMENT

ALL PARKING AREAS SHALL BE COMMON USE FOR PARKING RIGHT-OF-WAY FOR LOTS 1, 2, 3, 4, 5 AND 6, UNIVERSITY SQUARE PLAT A.

PLAT VACATION NOTICE

THE CITY OF OREM, UTAH COUNTY, UTAH, IS SATISFIED THAT NEITHER THE PUBLIC NOR ANY PERSON WILL BE MATERIALLY INJURED BY THE VACATION OF LOT 6, PLAT A, UNIVERSITY SQUARE, AND THAT THERE IS GOOD CAUSE FOR THE VACATION. THEREFORE, SAID LOT IS HEREBY VACATED.

David Berlin CITY MANAGER DATE 7/21/91

Lot 6 UNIVERSITY SQUARE A (600) OF 1025