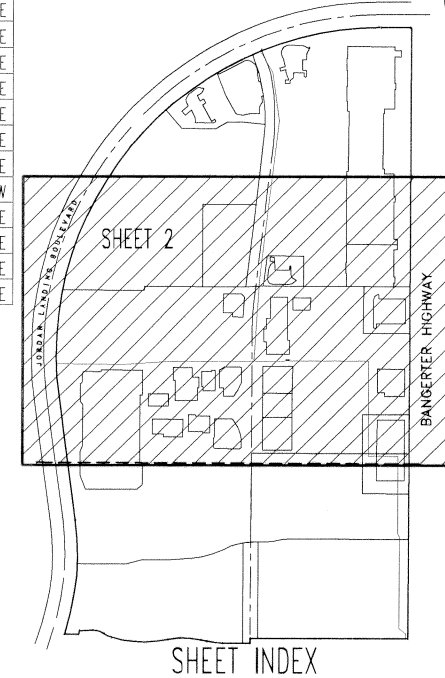


LINE	LENGTH	BEARING	LINE	LENGTH	BEARING
L01	16.93	N87°13'51"W	L101	16.93	N87°13'51"W
L12	238.81	N42°50'01"E	L110	17.00	N07°46'07"E
L14	10.00	S29°30'52"E	L102	18.30	N87°13'51"W
L15	16.93	N87°13'51"W	L103	20.50	N07°46'07"E
L16	208.01	N14°29'01"E	L104	20.00	N07°46'07"E
L17	19.90	N12°38'02"E	L105	51.50	N87°13'51"W
L18	10.00	S29°30'52"E	L106	18.60	N07°46'07"E
L19	178.29	N87°13'51"W	L107	34.50	N87°13'51"W
L20	6.40	N07°46'07"E	L108	5.00	N07°46'07"E
L21	44.96	N12°38'02"E	L109	34.50	N87°13'51"W
L22	15.99	N12°38'02"E	L110	22.00	N87°13'51"W
L23	115.07	N12°38'02"E	L111	24.30	N07°46'07"E
L24	134.00	N07°46'07"E	L112	14.20	N07°46'07"E
L25	200.00	N07°46'07"E	L113	14.20	N07°46'07"E
L26	216.42	N07°46'07"E	L114	60.74	N07°46'07"E
L27	300.00	N07°46'07"E	L115	22.00	N87°13'51"W
L28	70.40	S07°44'43"E	L116	14.84	N07°46'07"E
L29	74.50	S82°13'51"E	L117	27.54	N87°13'51"W
L30	301.88	S82°13'51"E	L118	10.94	N07°46'07"E
L31	5.00	S82°13'51"E	L119	74.87	S89°40'07"E
L32	53.83	N87°13'51"W	L120	48.72	N07°46'07"E
L33	111.11	N87°13'51"W	L121	28.87	S87°44'46"E
L34	44.96	N07°46'07"E	L122		
L35	48.03	N07°46'07"E	L123		
L36	2.83	N87°13'51"W	L124		
L37	34.25	N87°13'51"W	L125		
L38	1.81	N87°13'51"W	L126		
L39	80.29	N07°46'07"E	L127		
L40	27.17	N07°46'07"E	L128		
L41	11.40	S82°13'51"E	L129		
L42	11.90	N87°13'51"W	L130	67.00	S87°46'07"E
L43	43.42	N82°13'51"W	L131	136.49	N87°13'51"W
L44	8.00	S87°46'07"E	L132	24.00	N07°46'07"E
L45	33.38	N87°13'51"W	L133	126.31	N87°13'51"W
L46	50.81	N07°46'07"E	L134	83.10	S87°13'51"E
L47	1.53	N87°13'51"W	L135	7.96	S87°13'51"E
L48	39.41	N87°13'51"W	L136	7.96	S87°13'51"E
L49	67.90	N87°13'51"W	L137	28.18	N07°46'07"E
L50	5.24	S87°46'07"E	L138	38.56	S87°13'51"E
L51	79.00	N87°13'51"W	L139	46.08	N07°46'07"E
L52	9.00	S87°46'07"E	L140	340.50	N07°46'07"E
L53	8.92	N87°13'51"W	L141	10.00	N87°13'51"W
L54	31.00	N07°46'07"E	L142	51.14	N07°46'07"E
L55	6.48	N87°13'51"W	L143	30.50	N87°13'51"W
L56	30.50	N07°46'07"E	L144	12.00	N07°46'07"E
L57	9.00	N87°13'51"W	L145	29.82	N87°13'51"W
L58	4.99	N07°46'07"E	L146	89.00	N07°46'07"E
L59	2.00	N87°13'51"W	L147	220.04	N87°13'51"W
L60	66.50	N07°46'07"E	L148	60.36	N87°13'51"W
L61	20.51	S82°13'51"E	L149	60.36	N87°13'51"W
L62	19.00	S87°13'51"E	L150	40.80	S07°46'07"E
L63	4.00	N07°46'07"E	L151	29.00	N87°13'51"W
L64	77.16	N07°46'07"E	L152	42.54	S07°46'07"E
L65			L153	10.00	N87°13'51"W
L66			L154	8.00	N07°46'07"E
L67	44.87	N82°13'51"W	L155	284.33	N07°46'07"E
L68	88.29	N07°46'07"E	L156	24.87	S07°46'07"E
L69	32.29	N07°13'51"W	L157	1.86	N87°13'51"W
L70	42.40	N07°46'07"E	L158	72.27	S07°46'07"E
L71	31.84	N87°13'51"W	L159	224.03	N87°13'51"W
L72	107.47	N07°46'07"E	L160	76.33	S07°46'07"E
L73	195.27	N07°46'07"E	L161	56.30	N87°13'51"W
L74	23.97	N87°13'51"W	L162	40.66	N07°46'07"E
L75	4.33	N87°13'51"W	L163	23.74	N07°46'07"E
L76	43.80	S82°46'07"E	L164	59.58	N07°46'07"E
L77	126.36	N82°13'51"W	L165	13.36	N87°13'51"W
L78	30.88	S07°46'07"E	L166	48.00	N07°46'07"E
L79	5.98	S82°13'51"E	L167	46.89	N87°13'51"W
L80	23.57	N82°13'51"W	L168	23.59	S87°13'51"E
L81	59.21	S07°46'07"E	L169	12.18	N07°46'07"E
L82	7.67	S82°13'51"E	L170	3.92	N87°13'51"W
L83	48.57	N82°13'51"W	L171	7.71	S87°51'14"E
L84	79.20	N87°13'51"W			
L85	12.52	N87°13'51"W			
L86	16.00	N07°46'07"E			
L87	10.38	S82°13'51"E			
L88	26.36	N07°46'07"E			
L89	114.43	N87°13'51"W			
L90	9.00	N87°13'51"W			
L91	18.11	N07°46'07"E			
L92	78.03	N87°13'51"W			

LINE	LENGTH	BEARING
L230	112.57	S07°46'07"W
L231	10.00	S82°13'51"E
L232	28.15	N07°46'07"E
L233	21.52	S82°13'51"E
L234	69.82	N07°46'07"E
L235	30.67	S82°13'51"E
L236	46.48	N07°46'07"E
L237	21.52	S82°13'51"E
L238	89.52	N07°46'07"E
L239	10.00	S82°13'51"E
L240	149.68	N07°46'07"E
L241	21.52	S82°13'51"E
L242	25.35	N82°13'51"W
L243	20.99	S82°13'51"E
L244	280.64	N07°46'07"E
L245	19.00	S82°13'51"E
L246	300.00	N07°46'07"E



PREPARED BY:
McNEIL ENGINEERING, INC.
 CONSULTING ENGINEERS
 &
 LAND SURVEYORS
 6885 SOUTH 900 EAST, S.L.C., UT 84121
 (801) 255-7700

PARCEL POINT OF BEGINNING TIE	BEARING & DISTANCE
05	N 07°46'07" E 1663.22
06	N 87°13'51" W 54.90 & N 07°46'07" E 1663.22
07	N 87°13'51" W 881.90 & N 07°46'07" E 1484.69
08	N 87°13'51" W 698.86 & N 07°46'07" E 1484.69
09	N 87°13'51" W 453.96 & N 07°46'07" E 1488.31
10	N 87°13'51" W 514.51 & N 07°46'07" E 1488.68
11	N 07°46'07" E 1663.22
12	N 87°13'51" W 670.39 & N 07°46'07" E 392.21

PARCEL POINT OF BEGINNING TIE	BEARING & DISTANCE
13	N 87°13'51" W 728.82 & N 07°46'07" E 1357.56
14	N 87°13'51" W 512.53 & N 07°46'07" E 1203.98
15	N 87°13'51" W 429.86 & N 07°46'07" E 1381.96
16	N 87°13'51" W 961.91 & N 07°46'07" E 1332.22
17	N 07°46'07" E 1292.22
18	N 87°13'51" W 189.53 & N 07°46'07" E 777.47
19	N 87°13'51" W 1188.67 & N 07°46'07" E 613.70
20	N 87°13'51" W 1024.11 & N 07°46'07" E 978.05

PARCEL POINT OF BEGINNING TIE	BEARING & DISTANCE
21	N 87°13'51" W 901.88 & N 07°46'07" E 1001.63
22	N 87°13'51" W 825.63 & N 07°46'07" E 1044.60
23	N 87°13'51" W 748.10 & N 07°46'07" E 1021.18
24	N 87°13'51" W 961.91 & N 07°46'07" E 846.39
25	N 87°13'51" W 847.91 & N 07°46'07" E 864.35
26	N 87°13'51" W 722.38 & N 07°46'07" E 796.47
27	N 87°13'51" W 498.03 & N 07°46'07" E 1034.89

PARCEL POINT OF BEGINNING TIE	BEARING & DISTANCE
28	N 87°13'51" W 498.03 & N 07°46'07" E 932.09
29	N 87°13'51" W 498.03 & N 07°46'07" E 790.47
30	N 87°13'51" W 20.03 & N 07°46'07" E 1023.25
31	N 87°13'51" W 20.03 & N 07°46'07" E 777.47
32	N 07°46'07" E 777.47
33	N 87°13'51" W 20.03 & N 07°46'07" E 777.47

NOTE: THE BEARINGS SHOWN IN THIS EXHIBIT REPRESENT A ROTATION OF 07°11'16" CLOCKWISE FROM THE SALT LAKE COUNTY AREA REFERENCE PLAT INFORMATION AND ARE BASED UPON AN AIRPORT GRID SYSTEM AT MUNICIPAL AIRPORT NO. 2 IN WHICH THE CENTERLINE OF THE RUNWAY IS GRID NORTH.

NOTE: ENTIRE BOUNDARY IS SUBJECT TO A SPECIAL WARRANTY DEED RECORDED IN BOOK 8160, PAGE 2808 OF THE COUNTY RECORDER'S OFFICE FOR AN AVIGATION EASEMENT FOR SALT LAKE CITY AIRPORT II.

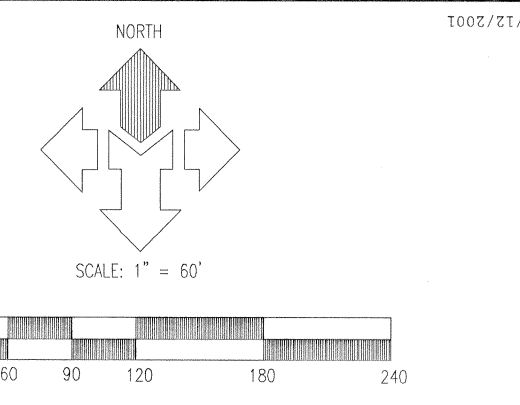
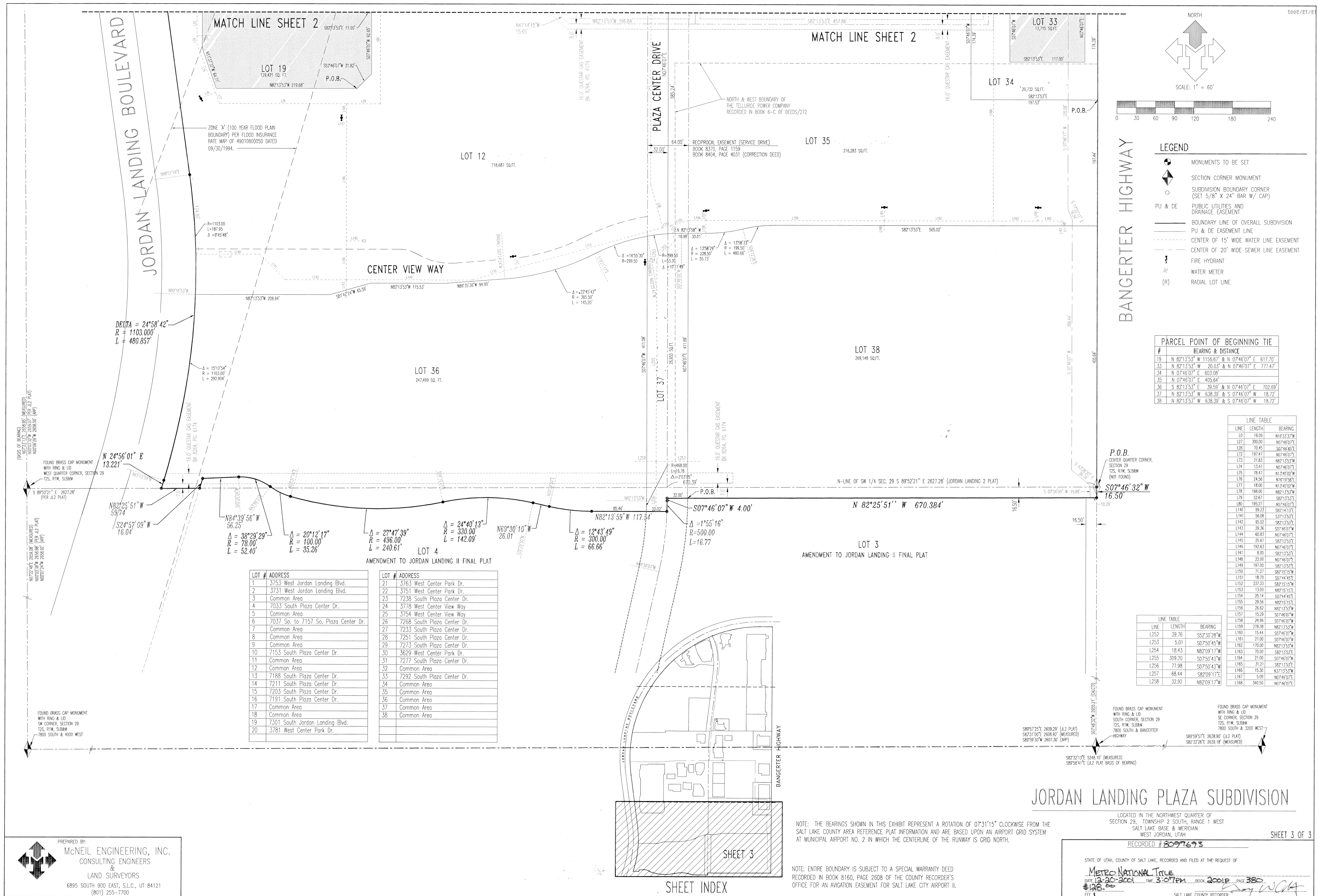
LOCATED IN THE NORTHWEST QUARTER OF SECTION 29, TOWNSHIP 2 SOUTH, RANGE 1 WEST SALT LAKE BASE & MERIDIAN - WEST JORDAN, UTAH

RECORDED # 8097693

STATE OF UTAH, COUNTY OF SALT LAKE, RECORDED AND FILED AT THE REQUEST OF:
Metro National Title
 DATE 12-20-2001 TIME 3:07 PM BOOK 8016 PAGE 380
 \$128.00
 SALT LAKE COUNTY RECORDER
 2001P-380

SHEET 2 OF 3

700403PT106



- LEGEND**
- MONUMENTS TO BE SET
 - SECTION CORNER MONUMENT
 - SUBDIVISION BOUNDARY CORNER (SET 5/8" X 24" BAR W/ CAP)
 - PU & DE PUBLIC UTILITIES AND DRAINAGE EASEMENT
 - BOUNDARY LINE OF OVERALL SUBDIVISION
 - PU & DE EASEMENT LINE
 - CENTER OF 15' WIDE WATER LINE EASEMENT
 - CENTER OF 20' WIDE SEWER LINE EASEMENT
 - FIRE HYDRANT
 - WATER METER
 - (R) RADIAL LOT LINE

PARCEL POINT OF BEGINNING TIE

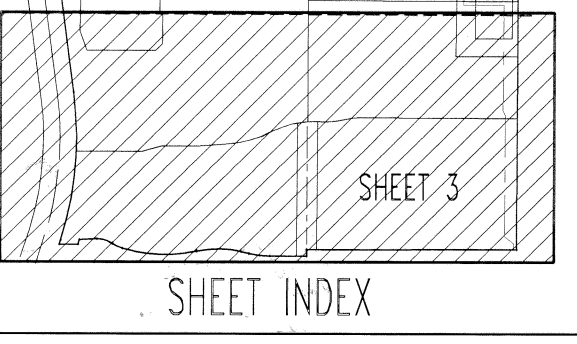
#	BEARING & DISTANCE
19	N 82°13'53" W 1156.67' & N 07°46'07" E 617.70'
33	N 82°13'53" W 20.03' & N 07°46'07" E 777.47'
34	N 07°46'07" E 603.05'
35	N 07°46'07" E 405.64'
36	S 82°13'53" E 39.50' & N 07°46'07" E 702.69'
37	N 82°13'53" W 638.35' & S 07°46'07" W 18.72'
38	N 82°13'53" W 638.35' & S 07°46'07" W 18.72'

LINE TABLE

LINE #	LENGTH	BEARING
L01	16.81	N09°53'37" W
L02	300.00	N07°46'07" E
L03	70.45	S07°46'07" E
L04	19.47	N07°46'07" E
L05	21.63	N82°13'53" W
L06	13.47	N07°46'07" E
L07	28.47	N17°49'02" W
L08	24.56	N19°15'51" W
L09	18.00	N17°49'02" W
L10	25.67	S82°13'53" E
L11	195.27	N07°46'07" E
L12	89.23	S87°14'13" E
L13	36.68	S77°15'51" E
L14	90.92	S87°15'51" E
L15	29.36	S07°46'07" W
L16	60.80	N07°46'07" E
L17	25.67	S87°15'51" E
L18	192.63	N07°46'07" E
L19	4.00	S87°15'51" E
L20	22.00	N07°46'07" E
L21	197.00	S87°15'51" E
L22	71.27	S87°15'51" E
L23	18.20	S07°46'07" E
L24	237.33	S87°15'51" E
L25	13.00	N87°15'51" E
L26	29.14	S07°46'07" E
L27	29.56	N87°15'51" E
L28	26.62	N87°15'51" E
L29	15.29	S07°46'07" E
L30	24.98	S07°46'07" W
L31	278.28	N87°15'51" E
L32	14.44	S07°46'07" W
L33	39.76	S52°10'28" W
L34	5.01	S07°46'07" W
L35	18.43	N82°09'17" W
L36	70.00	S87°15'51" E
L37	309.20	S07°46'07" W
L38	21.00	S07°46'07" W
L39	77.98	S07°46'07" W
L40	31.31	S87°15'51" E
L41	15.30	N07°15'51" E
L42	68.44	S82°09'17" E
L43	3.00	N07°46'07" E
L44	32.92	N82°09'17" W

LOT #	ADDRESS	LOT #	ADDRESS
1	3753 West Jordan Landing Blvd.	21	3763 West Center Park Dr.
2	3731 West Jordan Landing Blvd.	22	3751 West Center Park Dr.
3	Common Area	23	7236 South Plaza Center Dr.
4	7033 South Plaza Center Dr.	24	3778 West Center View Way
5	Common Area	25	3754 West Center View Way
6	7037 So. to 7157 So. Plaza Center Dr.	26	7268 South Plaza Center Dr.
7	Common Area	27	7233 South Plaza Center Dr.
8	Common Area	28	7251 South Plaza Center Dr.
9	Common Area	29	7273 South Plaza Center Dr.
10	7153 South Plaza Center Dr.	30	3629 South Plaza Center Dr.
11	Common Area	31	7277 South Plaza Center Dr.
12	Common Area	32	Common Area
13	7188 South Plaza Center Dr.	33	7292 South Plaza Center Dr.
14	7211 South Plaza Center Dr.	34	Common Area
15	7203 South Plaza Center Dr.	35	Common Area
16	7191 South Plaza Center Dr.	36	Common Area
17	Common Area	37	Common Area
18	Common Area	38	Common Area
19	7301 South Jordan Landing Blvd.		
20	3781 West Center Park Dr.		

PREPARED BY:
McNEIL ENGINEERING, INC.
 CONSULTING ENGINEERS
 &
 LAND SURVEYORS
 6895 SOUTH 900 EAST, S.L.C., UT 84121
 (801) 255-7700



NOTE: THE BEARINGS SHOWN IN THIS EXHIBIT REPRESENT A ROTATION OF 07°31'15" CLOCKWISE FROM THE SALT LAKE COUNTY AREA REFERENCE PLAT INFORMATION AND ARE BASED UPON AN AIRPORT GRID SYSTEM AT MUNICIPAL AIRPORT NO. 2 IN WHICH THE CENTERLINE OF THE RUNWAY IS GRID NORTH.

NOTE: ENTIRE BOUNDARY IS SUBJECT TO A SPECIAL WARRANTY DEED RECORDED IN BOOK 6160, PAGE 2028 OF THE COUNTY RECORDER'S OFFICE FOR AN AVIGATION EASEMENT FOR SALT LAKE CITY AIRPORT II.

JORDAN LANDING PLAZA SUBDIVISION

LOCATED IN THE NORTHWEST QUARTER OF SECTION 29, TOWNSHIP 2 SOUTH, RANGE 1 WEST, SALT LAKE BASE & MERIDIAN, WEST JORDAN, UTAH

RECORDED # **8097693**

STATE OF UTAH, COUNTY OF SALT LAKE, RECORDED AND FILED AT THE REQUEST OF
METRO NATIONAL Title
 DATE 12-20-2001 TIME 3:07PM BOOK 2001 PAGE 380
 \$128.00

SALT LAKE COUNTY RECORDER
 2001P-380