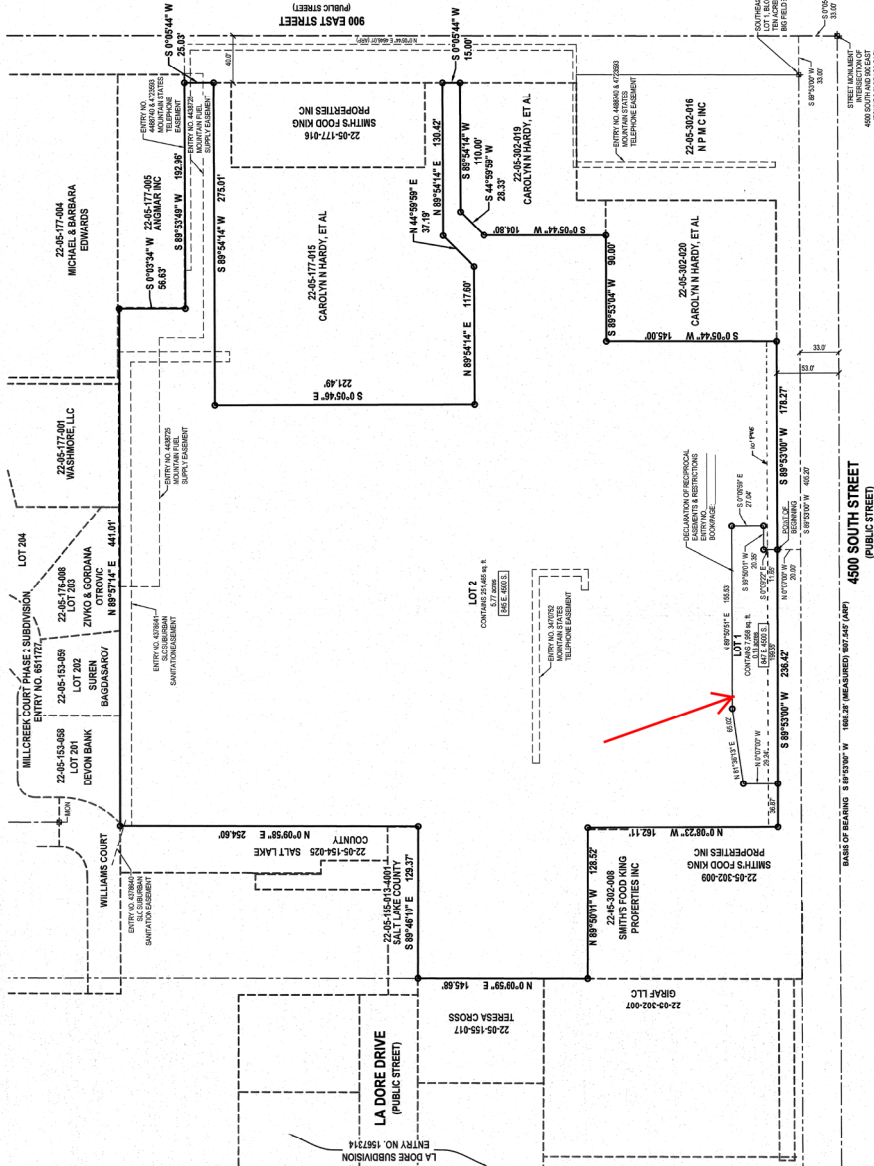


JAVA JO'S 2 LOT SUBDIVISION

LOCATED IN LOTS 1 AND 2 OF BLOCK 6, TEACUP PLAT 'N', BIG FIELD SURVEY
TOWNSHIP 2 SOUTH, RANGE 1 EAST, SALT LAKE COUNTY, UTAH
SEPTEMBER 2021

This map is provided solely for the purpose of assisting in locating the property and Cottonwood Title Insurance Agency, Inc. assumes no liability for variation, if any, with any actual survey.



CORPORATE ACKNOWLEDGMENT

STATE OF UTAH, County of Salt Lake, I, Christine E. Masella, Secretary of the State of Utah, do hereby certify that the above described plat was duly recorded in the office of the State of Utah, County of Salt Lake, on this 13 day of September, 2021, at Salt Lake City, Utah. My commission expires on 12/31/2021.

NOTARY PUBLIC

DEVELOPER
SALT LAKE COUNTY ADDRESSING
SALT LAKE COUNTY HEALTH DEPARTMENT
UNIFIED FIRE AUTHORITY APPROVAL

MILLCREEK PLANNING AND ZONING DEPARTMENT
MILLCREEK PLANNING COMMISSION
MILLCREEK ENGINEERING

PUBLIC UTILITY APPROVAL
MILLCREEK PLANNING COMMISSION

APPROVAL AS TO FORM
MILLCREEK PLANNING COMMISSION

RECORD OF SURVEY
MILLCREEK ENGINEERING

APPROVAL AS TO FORM
MILLCREEK PLANNING COMMISSION

APPROVAL AS TO FORM
MILLCREEK PLANNING COMMISSION

APPROVAL AS TO FORM
MILLCREEK PLANNING COMMISSION

APPROVAL AS TO FORM
MILLCREEK PLANNING COMMISSION

APPROVAL AS TO FORM
MILLCREEK PLANNING COMMISSION

<p>STATE OF UTAH, County of Salt Lake, I, <u>Christine E. Masella</u>, Secretary of the State of Utah, do hereby certify that the above described plat was duly recorded in the office of the State of Utah, County of Salt Lake, on this <u>13</u> day of <u>September</u>, 2021, at <u>Salt Lake City, Utah</u>. My commission expires on <u>12/31/2021</u>.</p>	<p>NOTARY PUBLIC</p>
<p>DEVELOPER SALT LAKE COUNTY ADDRESSING SALT LAKE COUNTY HEALTH DEPARTMENT UNIFIED FIRE AUTHORITY APPROVAL</p>	<p>MILLCREEK PLANNING AND ZONING DEPARTMENT MILLCREEK PLANNING COMMISSION MILLCREEK ENGINEERING</p>
<p>PUBLIC UTILITY APPROVAL MILLCREEK PLANNING COMMISSION</p>	<p>APPROVAL AS TO FORM MILLCREEK PLANNING COMMISSION</p>
<p>APPROVAL AS TO FORM MILLCREEK PLANNING COMMISSION</p>	<p>RECORD OF SURVEY MILLCREEK ENGINEERING</p>
<p>APPROVAL AS TO FORM MILLCREEK PLANNING COMMISSION</p>	<p>APPROVAL AS TO FORM MILLCREEK PLANNING COMMISSION</p>
<p>APPROVAL AS TO FORM MILLCREEK PLANNING COMMISSION</p>	<p>APPROVAL AS TO FORM MILLCREEK PLANNING COMMISSION</p>
<p>APPROVAL AS TO FORM MILLCREEK PLANNING COMMISSION</p>	<p>APPROVAL AS TO FORM MILLCREEK PLANNING COMMISSION</p>
<p>APPROVAL AS TO FORM MILLCREEK PLANNING COMMISSION</p>	<p>APPROVAL AS TO FORM MILLCREEK PLANNING COMMISSION</p>

SURVEYOR'S CERTIFICATE
I, WILLIAM CLARK LOHREY, CERTIFY THAT I AM A LICENSED PROFESSIONAL LAND SURVEYOR IN THE STATE OF UTAH. I HAVE PERSONALLY CONDUCTED THE SURVEY AND THE PLAT IS A TRUE AND CORRECT REPRESENTATION OF THE SURVEY. I HAVE BEEN ADVISED BY THE PERSONS WHOSE INTERESTS ARE AFFECTED BY THIS PLAT THAT THEY ARE THE OWNERS OF THE INTERESTS AND THAT THE INFORMATION CONTAINED HEREIN IS TRUE AND CORRECT. I HAVE BEEN ADVISED BY THE PERSONS WHOSE INTERESTS ARE AFFECTED BY THIS PLAT THAT THEY ARE THE OWNERS OF THE INTERESTS AND THAT THE INFORMATION CONTAINED HEREIN IS TRUE AND CORRECT. I HAVE BEEN ADVISED BY THE PERSONS WHOSE INTERESTS ARE AFFECTED BY THIS PLAT THAT THEY ARE THE OWNERS OF THE INTERESTS AND THAT THE INFORMATION CONTAINED HEREIN IS TRUE AND CORRECT.

BOUNDARY DESCRIPTION
A part of Block 6, Teacup Plat 'N', Big Field Survey in the Southwest Quarter of Section 5, Township 2 South, Range 1 East, Salt Lake County, Utah, containing approximately 1.00 acre, more or less, being the same as described in the plat of said Block 6, Teacup Plat 'N', Big Field Survey, recorded in the Office of the County Clerk of Salt Lake County, Utah, on this 13th day of September, 2021.

OWNERS' DEDICATION
THE UNDERSIGNED OWNER OF THE ABOVE DESCRIBED TRACT OF LAND, DO HEREBY SET APART AND DEDICATE TO THE PUBLIC THE STRIP OF LAND DESCRIBED IN THE PLAT OF SAID TRACT OF LAND, TO BE USED AS A PUBLIC HIGHWAY AND TO BE MAINTAINED AS SUCH BY THE PUBLIC.

QUESTIONS
QUESTIONS ABOUT THIS PLAT MAY BE ASKED AT THE OFFICE OF THE COUNTY CLERK OF SALT LAKE COUNTY, UTAH, DURING BUSINESS HOURS. THE OFFICE IS LOCATED AT 400 WEST 100 SOUTH, SALT LAKE CITY, UTAH. THE OFFICE HOURS ARE 9:00 AM TO 5:00 PM, MONDAY THROUGH FRIDAY. THE OFFICE IS CLOSED ON SATURDAY AND SUNDAY. THE OFFICE IS CLOSED ON HOLIDAYS.

LEGEND
EXISTING STREET MONUMENT
SECTION CORNER
BOUNDARY LINE
PROPERTY LINE
EASEMENT LINE
SECTION LINE

VICINITY MAP
(NOT TO SCALE)

OWNERS' DEDICATION
THE UNDERSIGNED OWNER OF THE ABOVE DESCRIBED TRACT OF LAND, DO HEREBY SET APART AND DEDICATE TO THE PUBLIC THE STRIP OF LAND DESCRIBED IN THE PLAT OF SAID TRACT OF LAND, TO BE USED AS A PUBLIC HIGHWAY AND TO BE MAINTAINED AS SUCH BY THE PUBLIC.

JAVA JO'S 2 LOT SUBDIVISION
LOCATED IN LOTS 1 & 2 OF BLOCK 6, TEACUP PLAT 'N', BIG FIELD SURVEY IN THE SOUTHWEST QUARTER OF SECTION 5, TOWNSHIP 2 SOUTH, RANGE 1 EAST, SALT LAKE COUNTY, UTAH

RECORDED IN THE OFFICE OF THE COUNTY CLERK OF SALT LAKE COUNTY, UTAH, ON THIS 13TH DAY OF SEPTEMBER, 2021, AT 10:14 AM. BY: Christine E. Masella, Secretary of the State of Utah. My commission expires on 12/31/2021.

22-05-31-32
22-05-11-12

22-05-302-027
22-05-195-016

2021P-260