

4776-1

This map is provided solely for the purpose of assisting in locating the property and Cottonwood Title Insurance Agency, Inc. assumes no liability for variation, if any, with any actual survey.

FREMONT PARK SUBDIVISION

A PORTION OF THE NORTHWEST 1/4 OF SECTION 16, TOWNSHIP 4 NORTH, RANGE 2 WEST, SALT LAKE BASE AND MERIDIAN SYRACUSE CITY, DAVIS COUNTY, UTAH

4776-1

SURVEYOR'S CERTIFICATE

I, TRAVIS E. JENSEN, DO HEREBY CERTIFY THAT I AM A REGISTERED LAND SURVEYOR AND THAT I HOLD LICENSE NO. 376078 AS PRESCRIBED BY THE LAWS OF THE STATE OF UTAH AND THAT I HAVE MADE A SURVEY OF THE TRACT OF LAND SHOWN ON THIS PLAT AND HAVE SUBDIVIDED SAID TRACT OF LAND INTO LOTS, BLOCKS, STREETS AND EASEMENTS AND THAT THE SAME HAS BEEN CORRECTLY SURVEYED AND STAKED ON THE GROUND.

Travis E. Jensen 12/11/2007
TRAVIS E. JENSEN LS# 376078 DATE



OWNER'S DEDICATION AND CONSENT TO RECORD

WE THE UNDERSIGNED OWNERS OF THE HEREON DESCRIBED TRACT OF LAND, HEREBY SET APART AND SUBDIVIDE THE SAME INTO LOTS AND STREETS AS SHOWN ON THIS PLAT AND NAME SAID TRACT FREMONT PARK SUBDIVISION AND HEREBY DEDICATE, TO SYRACUSE CITY, DAVIS COUNTY, UTAH ALL THOSE PARTS OR PORTIONS OF SAID TRACT OF THE LAND DESIGNATED AS STREETS, THE SAME TO BE USED AS PUBLIC THOROUGHFARES FOREVER, AND ALSO DEDICATED TO SYRACUSE CITY THOSE CERTAIN STRIPS AS EASEMENTS FOR PUBLIC TRAILS, THE SAME TO BE USED FOR THE INSTALLATION, MAINTENANCE, AND OPERATION OF PUBLIC UTILITY SERVICE LINES AND DRAINAGE AS MAY BE AUTHORIZED BY SYRACUSE CITY.

Mayor Fred Panuccio
AS Mayor of THE SYRACUSE CITY BOARD, Jan. 8, 2008

ACKNOWLEDGMENT

State of Utah
County of Davis

ON THE 8 DAY of January, 2008 PERSONALLY APPEARED BEFORE ME, MAYOR FRED PANUCCO, WHO BEING BY ME DULY SWORN, DID SAY THAT HE IS THE AUTHORIZED AGENT OF SYRACUSE CITY, AND THAT THE WITHIN AND FOREGOING OWNER'S DEDICATION AND CONSENT TO RECORD WAS SIGNED ON BEHALF OF SAID CORPORATION AND DID ACKNOWLEDGE TO ME THAT SAID CORPORATION EXECUTED THE SAME.

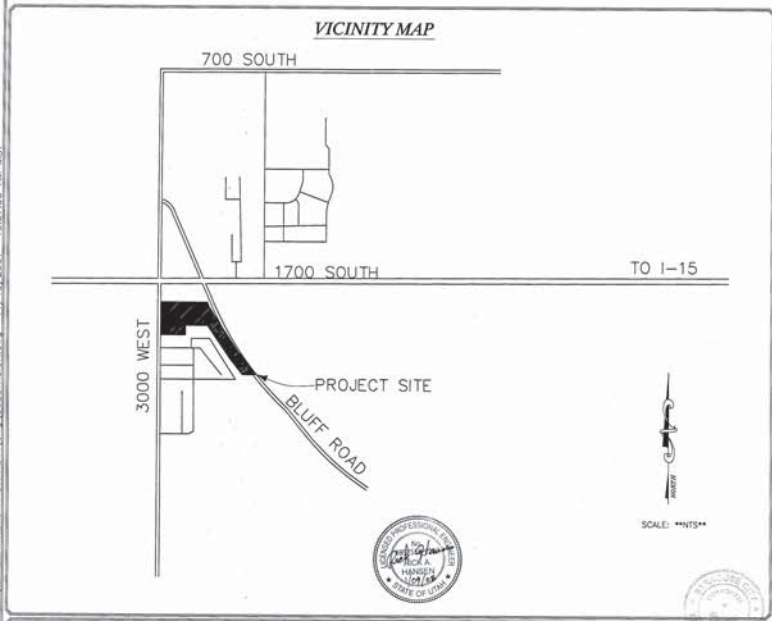
Carole Brown
NOTARY PUBLIC IN AND FOR THE STATE OF UTAH
RESIDING IN Davis County, UTAH
MY COMMISSION EXPIRES February 4, 2008



BOUNDARY DESCRIPTION

BEGINNING AT A POINT ON THE EAST RIGHT OF WAY LINE OF 3000 WEST STREET SAID POINT IS ALSO 891.94 FEET SOUTH 00°09'33" WEST ALONG THE SECTION LINE AND 33.00 FEET SOUTH 89°47'06" EAST FROM THE NORTHWEST CORNER OF SECTION 16, TOWNSHIP 4 NORTH, RANGE 2 WEST, SALT LAKE BASE AND MERIDIAN; THENCE SOUTH 89°47'06" EAST 1258.94 FEET TO A POINT ON THE WEST LINE OF THE LAYTON CANAL; THENCE ALONG SAID CANAL THE FOLLOWING (6) CALLS: (1) SOUTH 22°51'13" EAST 113.09 FEET; (2) SOUTH 31°25'03" EAST 78.95 FEET; (3) SOUTH 31°25'24" EAST 415.66 FEET; (4) SOUTH 33°41'06" EAST 471.42 FEET; (5) SOUTH 34°06'22" EAST 493.38 FEET; (6) SOUTH 37°45'26" EAST 784.03 FEET; THENCE NORTH 89°45'02" WEST 380.75 FEET TO A POINT ON THE EAST LINE OF FREMONT ESTATES NO. 6 WHICH IS FILED IN THE DAVIS COUNTY RECORDERS OFFICE AS ENTRY NUMBER 1675404; ALONG THE EAST LINE OF SAID SUBDIVISION THE FOLLOWING (3) CALLS: (1) NORTH 37°43'47" WEST 597.60 FEET; (2) NORTH 33°58'55" WEST 218.45 FEET; (3) NORTH 33°52'01" WEST 329.18 FEET TO THE NORTHEAST CORNER OF SAID SUBDIVISION AND THE SOUTHEAST CORNER OF FREMONT ESTATES NO. 11 FILED IN THE DAVIS COUNTY RECORDERS AS ENTRY NUMBER 1786896; THENCE ALONG THE EAST LINE OF SAID SUBDIVISION NORTH 33°51'51" WEST 487.88 FEET TO THE NORTHEAST CORNER OF SAID SUBDIVISION; THENCE ALONG THE NORTH LINE OF SAID SUBDIVISION AND THE NORTH LINE OF FREMONT ESTATES NO. 8 FILED IN THE DAVIS COUNTY RECORDERS OFFICE AS ENTRY NUMBER 1731554 NORTH 89°58'37" WEST 593.88 FEET TO THE NORTHWEST CORNER OF SAID SUBDIVISION; THENCE ALONG THE WEST LINE OF SAID SUBDIVISION SOUTH 00°02'21" EAST 260.00 FEET TO A POINT ON THE NORTH LINE OF FREMONT ESTATES NO. 7 FILED IN THE DAVIS COUNTY RECORDERS OFFICE AS ENTRY NUMBER 1675405; THENCE NORTH 89°59'54" WEST 669.83 FEET TO THE EAST RIGHT OF WAY LINE OF 3000 WEST; THENCE ALONG SAID RIGHT OF WAY NORTH 00°09'34" EAST 886.48 FEET TO THE POINT OF BEGINNING. CONTAINS 35.80 ACRES

FREMONT PARK SUBDIVISION
NW 1/4 LOCATED IN SECTION 16,
TOWNSHIP 4 NORTH, RANGE 2 WEST, S.L.B.&M.
SYRACUSE CITY, DAVIS COUNTY, UTAH



PLANNING COMMISSION RECOMMENDED FOR APPROVAL THIS 08 TH DAY OF January A.D. 2008 BY THE SYRACUSE CITY PLANNING COMMISSION. Chairman: <u>Robert Whiteley</u> CITY PLANNING COMMISSION	CITY ENGINEER RECOMMENDED FOR APPROVAL THIS 08 TH DAY OF January A.D. 2008 BY THE SYRACUSE CITY ENGINEER. <u>Rick Hansen</u> SYRACUSE CITY ENGINEER (SEAL)	CITY COUNCIL APPROVAL RECOMMENDED FOR APPROVAL THIS 08 TH DAY OF January A.D. 2008 BY THE SYRACUSE CITY COUNCIL. <u>Fred Panuccio</u> SYRACUSE CITY, MAYOR	DAVIS COUNTY RECORDER ENTRY # 289989 FEE PD. # 9200 FILED FOR RECORD AND RECORDED THIS 7 TH DAY OF February 2008 AT 4:20 P.M. IN BOOK 4465 PAGE 377 OF OFFICIAL RECORDS. <u>Richard T. Haughey</u> COUNTY RECORDER DEPUTY
---	---	--	--

3341 SOUTH 4000 WEST WEST VALLEY CITY, UTAH 84120 (801) 950-5605 50 EAST 100 SOUTH HERRON CITY, UTAH 84032 (435) 854-6600	DESIGNER: ALP REVIEWED: TEJ SHEET: 1 OF 3
--	---

4776-1

MAP PROD. BY: SURVEYOR'S STATION, ALTA DATA SUBDIVISION, INC. 11/13/2007 10:37:06 AM MST

1-2114

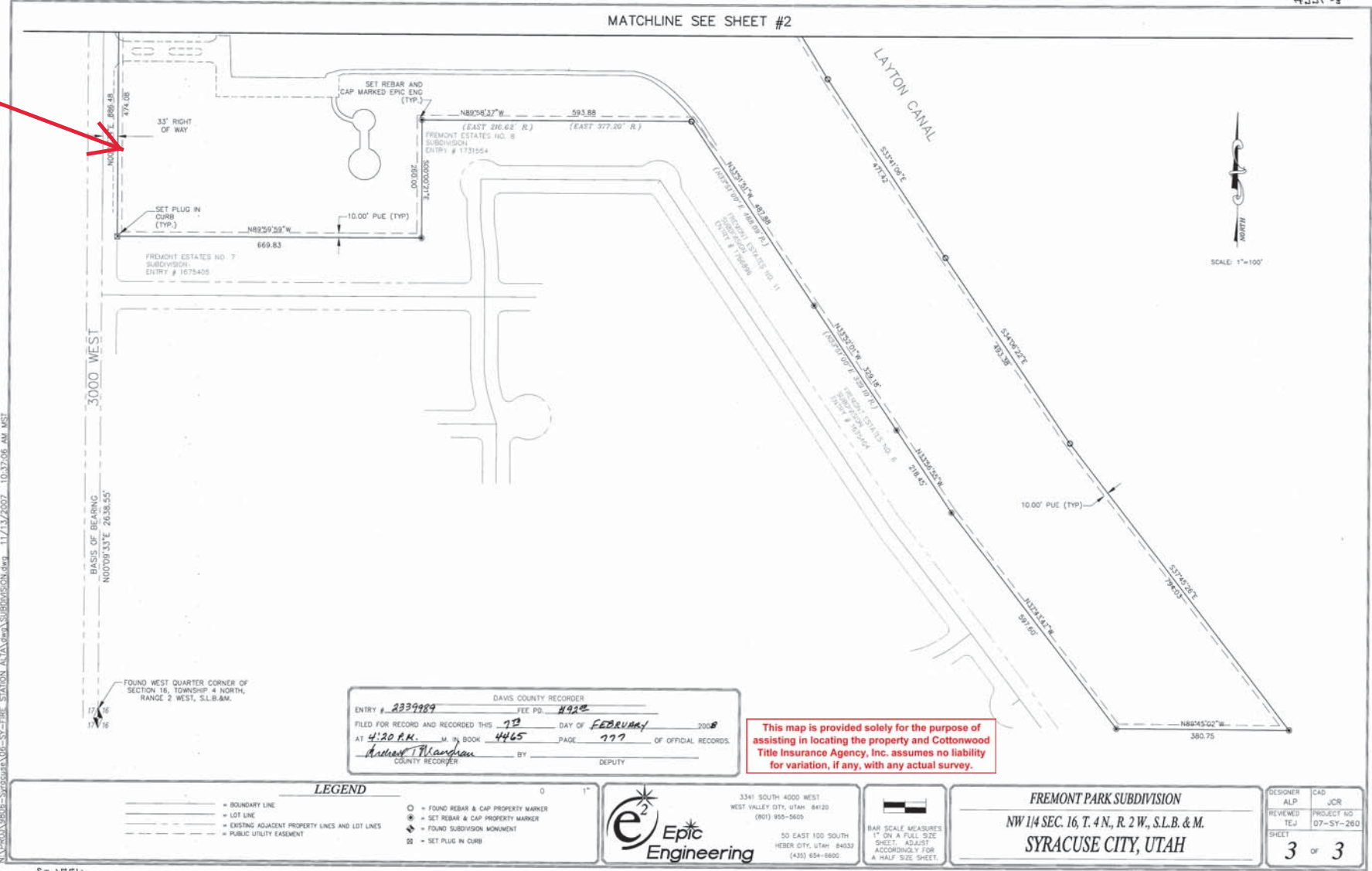
1-2114

4776-3

HJJF-3

HJJF-3

MATCHLINE SEE SHEET #2



N:\PROJECTS\9806-Syracuse\06-SY-FIRE STATION\ATA\Map\SUBDIVISION.dwg 11/13/2007 10:37:08 AM MST

DAVIS COUNTY RECORDER

ENTRY # 233989 FEE PD. # 892

FILED FOR RECORD AND RECORDED THIS 73 DAY OF FEBRUARY 2008

AT 4:20 P.M. M. IN BOOK 4465 PAGE 777 OF OFFICIAL RECORDS.

Arthur J. Blanton COUNTY RECORDER BY DEPUTY

This map is provided solely for the purpose of assisting in locating the property and Cottonwood Title Insurance Agency, Inc. assumes no liability for variation, if any, with any actual survey.

- LEGEND**
- BOUNDARY LINE
 - LOT LINE
 - - - EXISTING ADJACENT PROPERTY LINES AND LOT LINES
 - - - PUBLIC UTILITY EASEMENT
 - FOUND REBAR & CAP PROPERTY MARKER
 - ⊗ SET REBAR & CAP PROPERTY MARKER
 - ⊕ FOUND SUBDIVISION MONUMENT
 - ⊞ SET PLUG IN CURB

Epic Engineering

3341 SOUTH 4000 WEST
WEST VALLEY CITY, UTAH 84120
(801) 950-5605

50 EAST 100 SOUTH
HEBER CITY, UTAH 84033
(435) 854-8800

BAR SCALE MEASURES 1" ON A FULL SIZE SHEET. ADJUST ACCORDINGLY FOR A HALF SIZE SHEET.

FREMONT PARK SUBDIVISION

NW 1/4 SEC. 16, T. 4 N., R. 2 W., S.L.B. & M.

SYRACUSE CITY, UTAH

DESIGNER ALP	CAD JCR
REVIEWED TEJ	PROJECT NO 07-SY-260
SHEET 3 of 3	

8-2334

8-2334