

13294 sheet 2 of 2

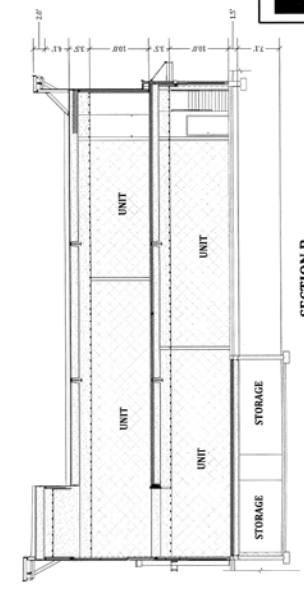
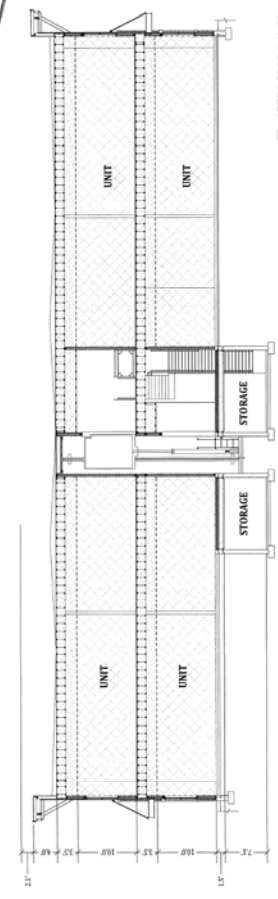
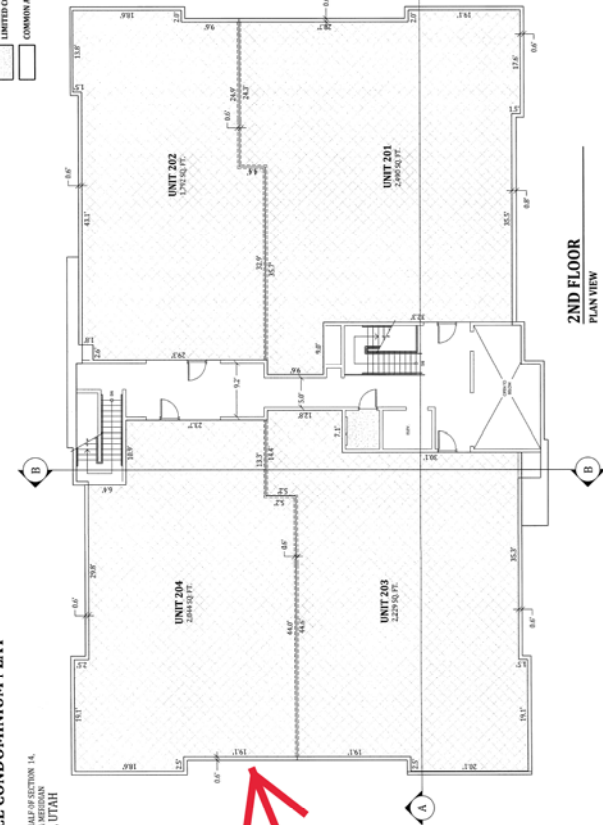
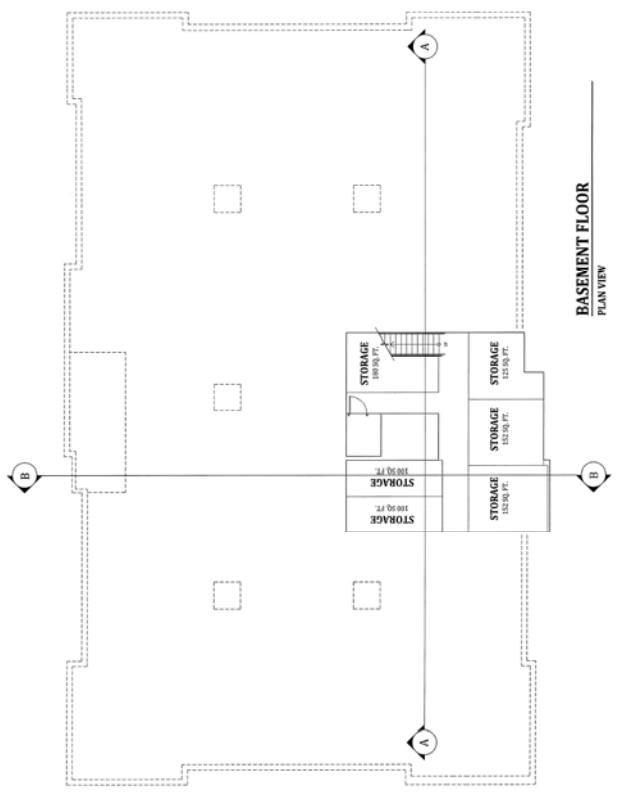
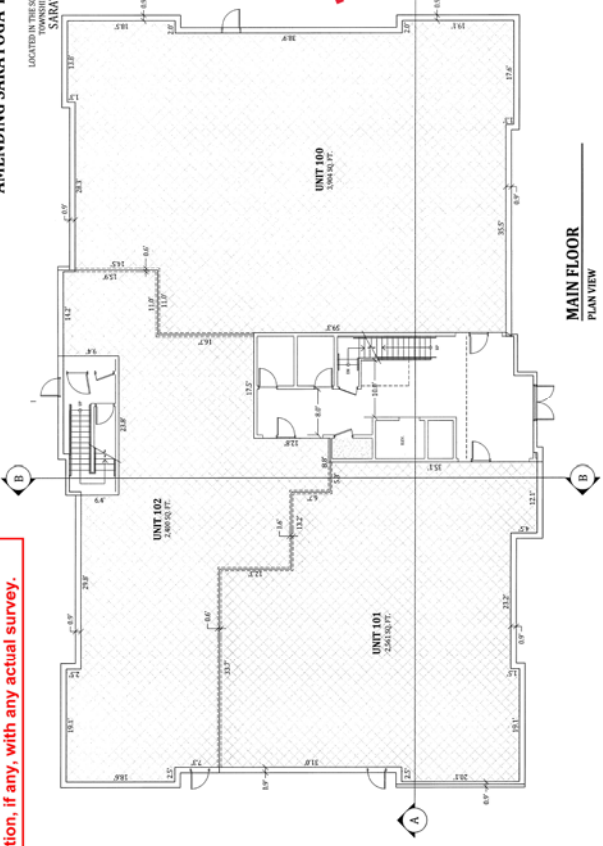
SARATOGA TOWN CENTER OFFICE CONDOMINIUM PLAT B AMENDING SARATOGA TOWN CENTER OFFICE CONDOMINIUM PLAT

FINAL PLAT
LOCATED IN THE SOUTH HALF OF SECTION 11 AND THE NORTH HALF OF SECTION 14,
TOWNSHIP 5 SOUTH RANGE 1 WEST, SALT LAKE BASIN & MERRIAM
SARATOGA SPRINGS, UTAH COUNTY, UTAH

LEGEND

- PRIVATE AREA
- UNITED COMMON AREA
- COMMON AREA

NOTE
THE PURPOSE OF THIS PLAT IS TO INDICATE THE LOCATION OF THE WALLS BETWEEN
THE UNITS OF THE SARATOGA TOWN CENTER OFFICE CONDOMINIUM PLAT.



BY: AS274-0704-00, Rev. 8/2002
FORNEY, AND CO., CADDRELL,
SANDY, UTAH 84071
703 AM. ST. SUITE 100, P.O. BOX 100
SARATOGA SPRINGS, UTAH 84071
PHONE: 801.501.0727
FAX: 801.501.0728

DEVELOPER
SARATOGA HILLS OFFICE, LLC
9980 SOUTH 1000 WEST, SUITE 1310
SANDY, UTAH 84071
PHONE: 801.501.0727
FAX: 801.501.0728

**SARATOGA TOWN CENTER OFFICE
CONDOMINIUM PLAT B
AMENDING UNITS 203 & 204 BY CHANGE TO
DEMISING WALL**
LOCATED IN THE SOUTH HALF OF SECTION 11 AND THE NORTH HALF OF SECTION 14,
TOWNSHIP 5 SOUTH RANGE 1 WEST, SALT LAKE BASIN & MERRIAM
SARATOGA SPRINGS, UTAH COUNTY, UTAH

BY: AS274-0704-00, Rev. 8/2002
FORNEY, AND CO., CADDRELL,
SANDY, UTAH 84071
703 AM. ST. SUITE 100, P.O. BOX 100
SARATOGA SPRINGS, UTAH 84071
PHONE: 801.501.0727
FAX: 801.501.0728



SALT LAKE CITY
No. 15111
PLANNING GROUP
1000 W. 1000 S. SUITE 100
SARATOGA SPRINGS, UTAH 84071
PHONE: 801.252.4493
WWW.PLANNINGGROUP.COM



ENSIGN
SARATOGA TOWN CENTER OFFICE
CONDOMINIUM PLAT B
AMENDING UNITS 203 & 204 BY CHANGE TO
DEMISING WALL

SHEET 2 OF 2
PROJECT NUMBER: 13294
DRAWN BY: JIM
CHECKED BY: JIM
DATE: 7/13/16

This map is provided solely for the purpose of assisting in locating the property and Cottonwood Title Insurance Agency, Inc. assumes no liability for variation, if any, with any actual survey.