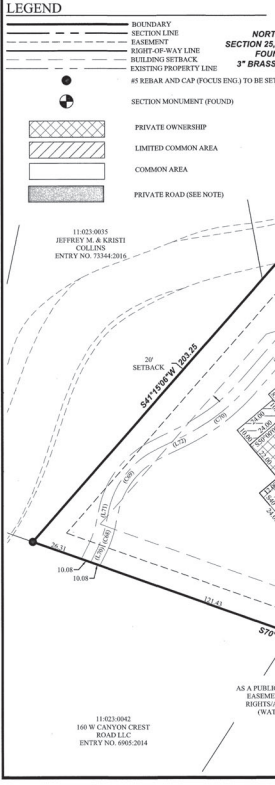
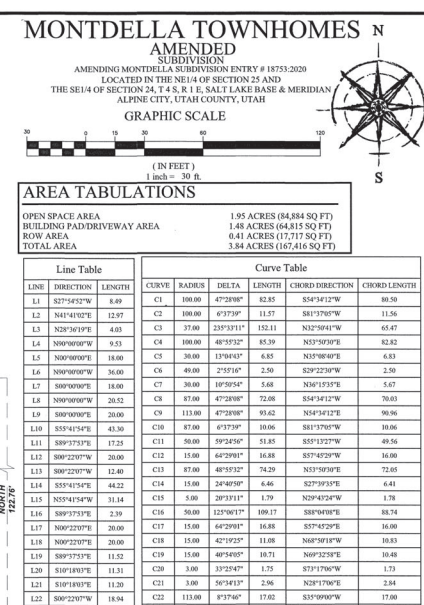
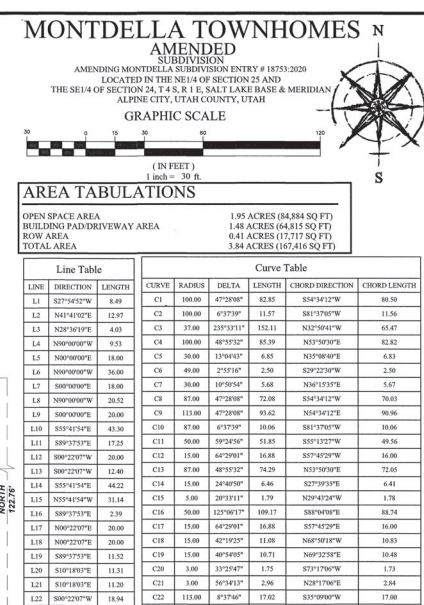
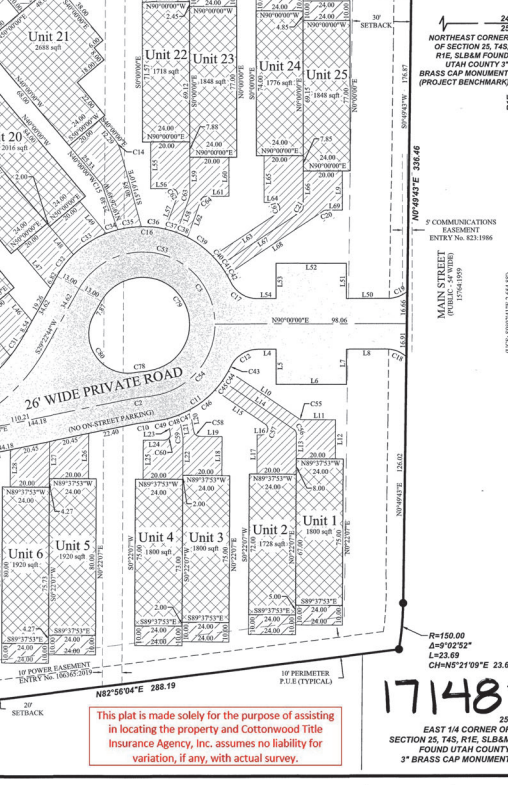


ADDRESS BLOCK table listing 24 units with their main unit numbers and acreages. Includes FEMA notes regarding flood zones and general notes about easements and common areas.

AREA TABULATIONS table with columns for Line Table and Curve Table, listing line numbers, directions, lengths, curves, radii, and other technical details for the subdivision.



Trail Easement Line Table with columns for Line, Direction, and Length, listing specific easement details for the subdivision.



AREA TABULATIONS table with columns for Line Table and Curve Table, listing line numbers, directions, lengths, curves, radii, and other technical details for the subdivision.

SURVEYOR'S CERTIFICATE: A statement by the surveyor, David Wilcox, dated 07/02/2020, certifying the accuracy of the survey and the plat.

BOUNDARY DESCRIPTION table detailing the boundaries of the property, including bearings, distances, and area calculations for various sections.

OWNER'S DEDICATION: A statement from the homeowners association dedicating public streets and other areas for the benefit of the community.

LIMITED LIABILITY ACKNOWLEDGMENT: A statement acknowledging the limited liability of the homeowners association for certain matters.

ACCEPTANCE BY LEGISLATIVE BODY: A statement from the City Council of Alpine City accepting the plat and the dedication of public streets.

PLANNING COMMISSION APPROVAL: A statement from the Planning Commission approving the plat and the dedication of public streets.

APPROVAL AS TO FORM: A statement from the homeowners association approving the form of the plat and the dedication of public streets.

Professional seals and signatures for the surveyor, engineer, and other involved parties.

Disclaimer: This plat is made solely for the purpose of assisting in locating the property and Cottonwood Title Insurance Agency, Inc. assumes no liability for variation, if any, with actual survey.