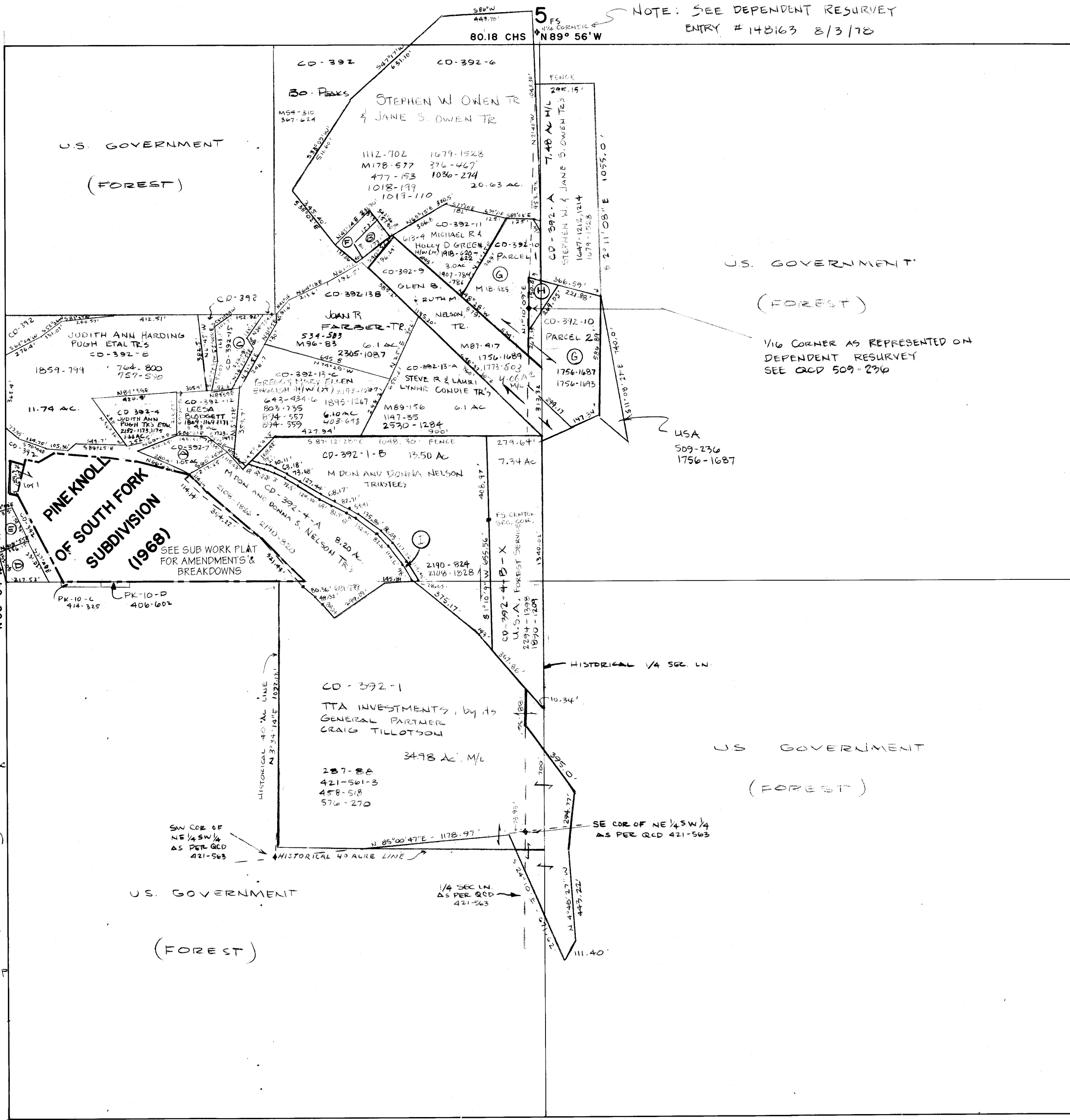


SECTION 8
T I S - R 7 E

SALT LAKE BASE & MERIDIAN 640.00 AC.

SCALE 1" = 400'

NOTE: SEE DEPENDENT RESURVEY
ENTRY # 148163 8/3/78



- Ⓐ CD-392-7 SARA WAGNER
2180-362 2204-570 2524-481
- Ⓑ CD-392-14 0.32 AC
JAMES EARL JONES ETAL
735-259 1300-1310 1004-1739 1300-1312
- Ⓒ TERESA BECK TR
615-332 2086-817
M217-563 1.24 AC
- Ⓓ CD-392-3 0.781 AC
WYLDON & JOY PEARSON H/W (JT)
2306-297 1704-1375
- Ⓔ CD-392-2 0.562 AC
STERLING K. SHOSTED & TESSIE MARIE SHOSTED TRS
535-63 2541-1576
- Ⓕ CD-392-16 P & B ASSOCIATION
309-703 0.32 AC
- Ⓖ CD-392-10 GARY L. & DEBRA M. EDMUNDS (JT)
2141-261 P1 & 2 P11-271 P2
PARCEL 1, 4.0 AC & PARCEL 2, 4.40 AC
TOTAL ACRES 8.40 AC
- Ⓗ CD-392-10-A MICHAEL R. & HOLLY GREEN H/W (JT)
0.43 AC
1756-1691
1907-784, 786
1918-620-622
- Ⓙ PUBLIC R/W SEE 509-405
CD-392-4-B M. DON AND DONNA NELSON LTD PARTNERSHIP
0.55 AC M/L
1890-1209

SEE SUB WORK PLAT FOR AMENDMENTS & BREAKDOWNS

80.26 CHS N 89° 54' W

NOTE: THE ABOVE PARCELS TIE TO VARIOUS MONUMENTS;
IT IS NOT ALWAYS CLEAR WHETHER THE MONUMENT IS FROM
THE GLO SURVEY OR THE FOREST SERVICE DEPENDENT RESURVEY

Approved	REVISIONS - DATE AND INITIAL	(In Pencil)
Utah State Tax Comm		
Date	By	

SUMMIT COUNTY, UTAH

SCALE
ONE INCH 400 FEET
BOOK PAGE