

**GRAND COUNTY, UTAH
ORDINANCE NO. 626 (2021)**

VACATING THAT PORTION OF SEVEN MILE FLAT ROAD #1940, A COUNTY D ROAD, LOCATED THROUGH REAL PROPERTY KNOWN AS PARCEL NOS. 04-0020-0088 AND 04-XST-0067

WHEREAS, under the Utah Highway Jurisdiction and Classification Act, the County manages all County roads as defined in Utah Code § 72-3-103(1) and may vacate the same upon petition and after public hearing;

WHEREAS, Utah Code § 72-3-105 defines a Class D Road as any road, way, or other land surface route that has been or is established by use or constructed and has been maintained to provide for usage by the public for vehicles with four or more wheels that is not a class A, class B, or class C road and specifies that the Grand County Commission has sole jurisdiction and control of all Class D Roads in the County;

WHEREAS, the Petitioner owns real property in Grand County known as 545 W SR 313, Moab, Utah (Parcel Nos. 04-XST-0067 and 04-0020-0088) through which a portion of Seven Mile Flat Road #1940, a County D Road, travels;

WHEREAS, Seven Mile Flat Road #1940 is a dead-end dirt road through private property which has not been accessed by the public since the private property was procured by the Petitioner's predecessor, Intrepid Potash, Inc.;

WHEREAS, the Petitioner, first through its predecessor, submitted a Petition to Vacate Public Road on October 15, 2020, including proof of written notice to Rocky Mountain Power, the affected utility operator, which has requested a utility easement prior to vacation of the county road, which easement has been recorded in the real property records of Grand County, Utah on December 7, 2020 at Entry No. 539324;

WHEREAS, under Utah Code §§ 17-27a-208 and 72-3-108, the County mailed notice of the Petition and public hearing on the same to the only owners of real property accessed by or abutting Seven Mile Flat Road #1940, the Bureau of Land Management, at least ten (10) days before the public hearing by electronic mail and received written confirmation of receipt;

WHEREAS, the Grand County Commission held a public hearing on this Ordinance to solicit input from local residents and visitors on January 19, 2020; and

WHEREAS, under the authority set forth herein, the Grand County Commission finds that compelling, countervailing public interests justifies the proposed vacation of a portion of the roadway;

NOW, THEREFORE BE IT ORDAINED that the Grand County Commission does hereby vacate that portion of Seven Mile Flat Road #1940, a County D Road, located through real

Ent 539910 Bk 911 Pg 513-519
Date: 10-FEB-2021 1:35:22PM
Fee: None Filed By: GKN
JOHN ALAN CORTES, Recorder
GRAND COUNTY CORPORATION
For: GRAND COUNTY

property known as Parcel Nos. 04-0020-0088 04-XST-0067 particularly described in Exhibit A and shown in Exhibit B, attached hereto.

APPROVED by the Grand County Commission in a public meeting on February 2, 2021 by the following vote:

GRAND COUNTY COMMISSION:

Those voting aye: Clapper, Hadler, Hedin, McGann, Stock, Walker, Woytek

Those voting nay:

Those absent:


Mary McGann, Chair


ATTEST

Quinn Hall, Clerk/Auditor

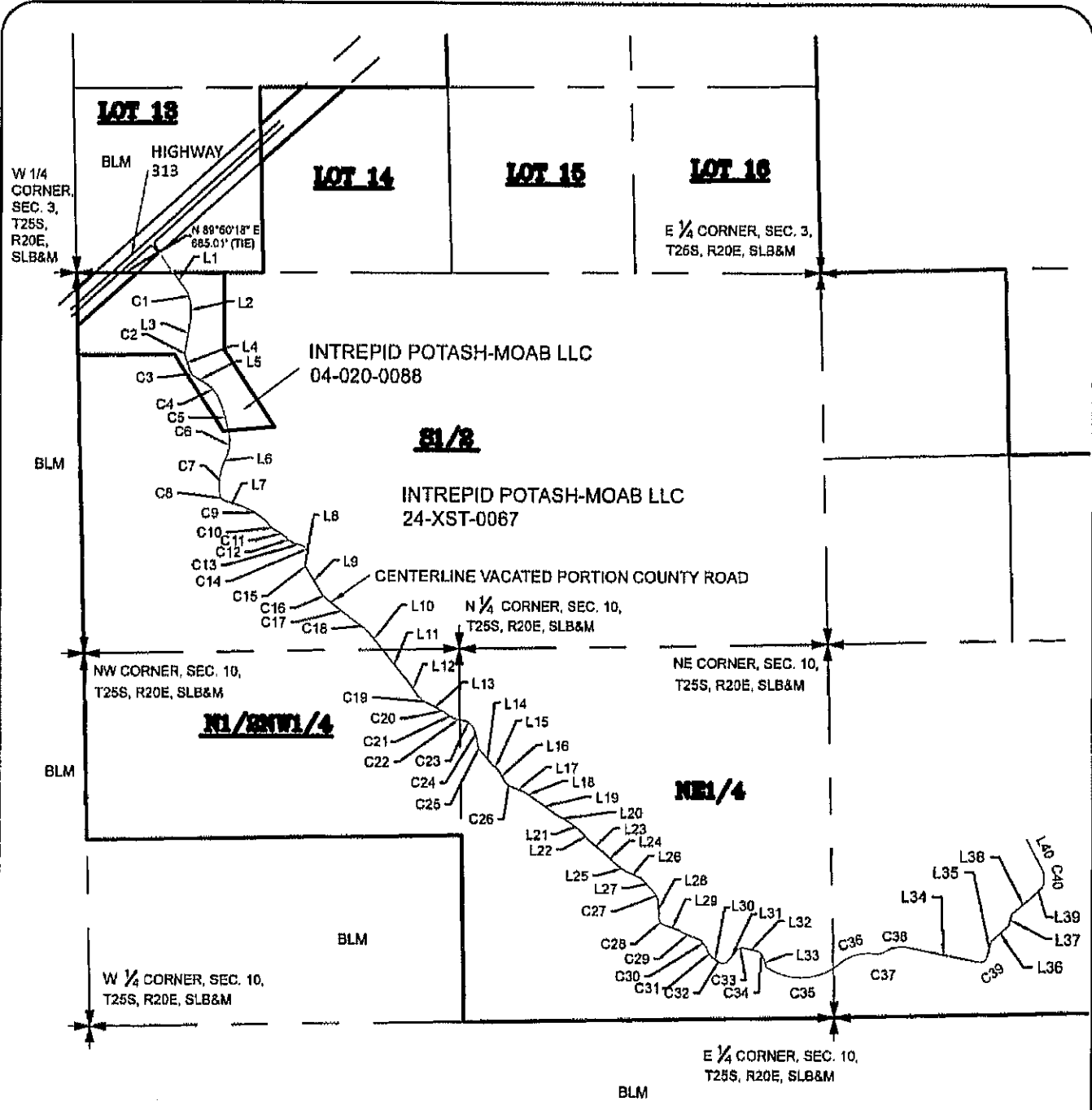
EXHIBIT A

The centerline of a portion of a County Road to be vacated, located within the South Half of Section 3 and the North Half of Section 10, T25S, R20E, SLB&M, being more particularly described as:

Beginning at a point on South Boundary of Lot 13 of said Section 3, said point being along the Center section line N 89°50'18" E 685.08 from the West Quarter corner of Section 3, Township 25 South, Range 20 East, Salt Lake Base and Meridian, and proceeding thence S 38°18'20" E 142.76 feet; thence with a curve turning to the right with an arc length of 131.67 feet, with a radius of 209.79 feet, with a chord bearing of S 18°41'23" E 129.52 feet; thence S 05°19'33" E 62.20 feet; thence S 09°36'57" W 269.42 feet; thence with a curve turning to the left with an arc length of 28.56 feet, with a radius of 60.01 feet, with a chord bearing of S 04°01'02" E 28.29 feet; thence S 17°39'00" E 97.88 feet; thence with a curve turning to the left with an arc length of 73.64 feet, with a radius of 100.01 feet, with a chord bearing of S 38°44'42" E 71.99 feet; thence S 59°50'24" E 70.09 feet; thence with a curve turning to the right with an arc length of 163.15 feet, with a radius of 250.57 feet, with a chord bearing of S 42°16'41" E 160.28 feet; thence with a compound curve turning to the right with an arc length of 277.64 feet, with a radius of 1142.28 feet, with a chord bearing of S 15°28'00" E 276.95 feet; thence with a compound curve turning to the right with an arc length of 121.06 feet, with a radius of 253.71 feet, with a chord bearing of S 06°12'12" W 119.91 feet; thence S 21°48'54" W 103.30 feet; thence with a curve turning to the left with an arc length of 187.20 feet, with a radius of 477.58 feet, with a chord bearing of S 05°02'37" W 186.00 feet; thence with a compound curve turning to the left with an arc length of 67.02 feet, with a radius of 63.90 feet, with a chord bearing of S 36°22'03" E 63.99 feet; thence S 72°52'24" E 105.74 feet; thence with a curve turning to the right with an arc length of 245.91 feet, with a radius of 474.44 feet, with a chord bearing of S 57°48'59" E 243.17 feet; thence with a reverse curve turning to the left with an arc length of 79.77 feet, with a radius of 196.21 feet, with a chord bearing of S 49°32'49" E 79.23 feet; thence with a reverse curve turning to the right with an arc length of 70.94 feet, with a radius of 273.84 feet, with a chord bearing of S 56°23'27" E 70.74 feet; thence with a reverse curve turning to the left with an arc length of 71.32 feet, with a radius of 398.17 feet, with a chord bearing of S 50°33'39" E 71.23 feet; thence with a reverse curve turning to the right with an arc length of 77.85 feet, with a radius of 437.19 feet, with a chord bearing of S 71°51'26" E 77.75 feet; thence with a compound curve turning to the right with an arc length of 59.62 feet, with a radius of 46.78 feet, with a chord bearing of S 26°58'16" E 55.67 feet; thence S 08°31'37" W 76.83 feet; thence with a curve turning to the left with an arc length of 30.48 feet, with a radius of 37.98 feet, with a chord bearing of S 15°29'19" E 29.67 feet; thence S 31°16'54" E 202.34 feet; thence with a curve turning to the left with an arc length of 54.20 feet, with a radius of 216.47 feet, with a chord bearing of S 41°35'52" E 54.06 feet; thence with a compound curve turning to the left with an arc length of 271.25 feet, with a radius of 3945.07 feet, with a chord bearing of S 52°04'02" E 271.20 feet; thence with a reverse curve turning to the right with an arc length of 91.98 feet, with a radius of 401.68 feet, with a chord bearing of S 52°06'38" E 91.78 feet; thence S 39°36'20" E 153.96 feet; thence S 38°44'08" E

308.72 feet; thence S 35°10'45" E 127.51 feet; thence with a curve turning to the left with an arc length of 115.45 feet, with a radius of 305.82 feet, with a chord bearing of S 56°46'54" E 114.76 feet; thence S 63°18'00" E 55.92 feet; thence with a curve turning to the right with an arc length of 58.92 feet, with a radius of 220.16 feet, with a chord bearing of S 58°13'26" E 58.74 feet; thence with a reverse curve turning to the left with an arc length of 62.54 feet, with a radius of 205.64 feet, with a chord bearing of S 56°06'42" E 62.30 feet; thence with a compound curve turning to the left with an arc length of 75.31 feet, with a radius of 1093.49 feet, with a chord bearing of S 78°43'53" E 75.30 feet; thence with a reverse curve turning to the right with an arc length of 72.53 feet, with a radius of 102.66 feet, with a chord bearing of S 57°12'20" E 71.03 feet; thence with a compound curve turning to the right with an arc length of 127.06 feet, with a radius of 203.31 feet, with a chord bearing of S 17°27'15" E 125.01 feet; thence with a reverse curve turning to the left with an arc length of 82.32 feet, with a radius of 97.93 feet, with a chord bearing of S 27°33'44" E 79.92 feet; thence S 40°45'07" E 114.52 feet; thence S 52°31'10" E 48.84 feet; thence S 29°30'13" E 103.20 feet; thence with a curve turning to the left with an arc length of 62.93 feet, with a radius of 113.87 feet, with a chord bearing of S 55°02'52" E 62.13 feet; thence S 69°07'37" E 94.75 feet; thence S 56°33'20" E 66.88 feet; thence S 54°27'21" E 221.02 feet; thence S 62°04'06" E 88.39 feet; thence S 52°43'29" E 118.73 feet; thence S 42°17'22" E 90.44 feet; thence S 51°06'07" E 113.18 feet; thence S 47°37'17" E 153.06 feet; thence S 54°27'40" E 67.72 feet; thence S 66°44'28" E 114.50 feet; thence S 44°14'23" E 122.67 feet; thence with a curve turning to the right with an arc length of 95.33 feet, with a radius of 153.46 feet, with a chord bearing of S 27°28'44" E 93.80 feet; thence S 00°40'12" E 99.02 feet; thence with a curve turning to the left with an arc length of 91.55 feet, with a radius of 63.24 feet, with a chord bearing of S 37°54'59" E 83.76 feet; thence S 70°49'13" E 99.89 feet; thence with a curve turning to the left with an arc length of 138.98 feet, with a radius of 565.76 feet, with a chord bearing of S 65°59'03" E 138.63 feet; thence with a reverse curve turning to the right with an arc length of 113.27 feet, with a radius of 126.00 feet, with a chord bearing of S 42°45'06" E 109.50 feet; thence with a reverse curve turning to the left with an arc length of 60.67 feet, with a radius of 118.25 feet, with a chord bearing of S 34°09'31" E 60.01 feet; thence S 53°32'09" E 56.92 feet; thence with a curve turning to the left with an arc length of 65.80 feet, with a radius of 51.00 feet, with a chord bearing of S 89°52'20" E 61.33 feet; thence N 39°21'42" E 95.37 feet; thence with a curve turning to the right with an arc length of 82.17 feet, with a radius of 65.40 feet, with a chord bearing of N 73°05'03" E 76.87 feet; thence S 76°41'32" E 81.93 feet; thence with a curve turning to the right with an arc length of 75.57 feet, with a radius of 90.55 feet, with a chord bearing of S 41°46'38" E 73.39 feet; thence S 14°53'11" E 58.42 feet; beginning at a ; thence with a curve turning to the left with an arc length of 540.27 feet, with a radius of 424.66 feet, with a chord bearing of N 88°38'07" E 504.56 feet; thence with a reverse curve turning to the right with an arc length of 277.69 feet, with a radius of 306.30 feet, with a chord bearing of N 72°20'55" E 268.28 feet; thence with a reverse curve turning to the left with an arc length of 73.87 feet, with a radius of 128.54 feet, with a chord bearing of N 80°18'25" E 72.86 feet; thence with a reverse curve turning to the right with an arc length of 184.90 feet, with a radius of 223.17 feet, with a chord bearing of N 79°26'09" E 179.65 feet; thence S 78°39'40" E 503.30 feet; thence with a curve turning to the left with an arc length of 92.20 feet, with a radius of 53.46 feet, with a chord bearing of N 55°43'44" E 81.19 feet; thence

N 15°35'33" E 106.19 feet; thence N 48°51'00" E 170.62 feet; thence N 12°35'03" E 82.77 feet; thence N 50°25'59" E 210.75 feet; thence N 46°35'28" E 79.94 feet; thence with a curve turning to the left with an arc length of 148.36 feet, with a radius of 139.61 feet, with a chord bearing of N 03°10'47" W 141.48 feet; thence N 28°28'16" W 222.70 feet to the point of terminus.



LOT 13

LOT 14

LOT 15

LOT 16

INTREPID POTASH-MOAB LLC
04-020-0088

SW 1/8

INTREPID POTASH-MOAB LLC
24-XST-0067

CENTERLINE VACATED PORTION COUNTY ROAD

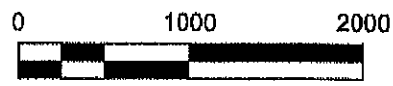
NW 1/4 SW 1/4

NE 1/4



30 South 100 East
Moab, UT 84532
435.259.8171

GRAPHIC SCALE



1" (INCH) = 1000' (FEET)



EXHIBIT B
COUNTY ROAD VACATION

Project 149-20
Date 12/17/20
Sheet 1 OF 2

LINE TABLE		
LINE	BEARING	DISTANCE
L1	S 38°18'20" E	142.74'
L2	S 05°19'33" E	62.20'
L3	S 09°36'57" W	269.38'
L4	S 17°39'00" E	97.87'
L5	S 59°50'24" E	70.08'
L6	S 21°48'54" W	103.29'
L7	S 72°52'24" E	105.72'
L8	S 08°31'37" W	76.82'
L9	S 31°16'54" E	202.32'
L10	S 39°36'20" E	153.94'
L11	S 38°44'08" E	308.66'
L12	S 35°10'45" E	127.49'
L13	S 63°18'00" E	55.91'
L14	S 40°45'07" E	114.51'
L15	S 52°31'10" E	48.83'
L16	S 29°30'13" E	103.19'
L17	S 69°07'37" E	94.74'
L18	S 56°33'20" E	66.87'
L19	S 54°27'21" E	221.00'
L20	S 62°04'08" E	88.38'
L21	S 52°43'29" E	118.71'
L22	S 42°17'22" E	90.43'
L23	S 51°06'07" E	113.16'
L24	S 47°37'17" E	153.04'
L25	S 54°27'40" E	67.71'
L26	S 66°44'28" E	114.49'
L27	S 44°14'23" E	122.65'
L28	S 00°40'12" E	99.00'
L29	S 70°49'13" E	99.88'
L30	S 53°32'09" E	56.91'
L31	N 39°21'42" E	95.36'
L32	S 76°41'32" E	81.92'
L33	S 14°53'11" E	58.42'
L34	S 78°39'40" E	503.30'
L35	N 15°35'33" E	106.19'
L36	N 48°51'00" E	170.62'
L37	N 12°35'03" E	82.77'
L38	N 50°25'59" E	210.75'
L39	N 46°35'28" E	79.94'
L40	N 28°28'16" W	222.70'

CURVE TABLE				
CURVE	RADIUS	ARC LENGTH	CHORD LENGTH	CHORD BEARING
C1	209.77'	131.66'	129.51'	S 18°41'23" E
C2	60.00'	28.55'	28.28'	S 04°01'02" E
C3	100.00'	73.64'	71.98'	S 38°44'42" E
C4	250.54'	163.13'	160.26'	S 42°16'41" E
C5	1142.15'	277.61'	276.92'	S 15°28'00" E
C6	253.66'	121.04'	119.90'	S 06°12'12" W
C7	477.53'	187.18'	185.98'	S 05°02'37" W
C8	63.89'	67.01'	63.98'	S 36°22'03" E
C9	474.39'	245.88'	243.14'	S 57°48'59" E
C10	196.19'	79.77'	79.22'	S 49°32'49" E
C11	273.81'	70.93'	70.74'	S 56°23'27" E
C12	398.13'	71.31'	71.22'	S 50°33'39" E
C13	437.15'	77.84'	77.74'	S 71°51'26" E
C14	46.78'	59.62'	55.66'	S 26°58'16" E
C15	37.98'	30.48'	29.67'	S 15°29'19" E
C16	216.45'	54.19'	54.06'	S 41°35'52" E
C17	3944.64'	271.22'	271.17'	S 52°04'02" E
C18	401.64'	91.97'	91.77'	S 52°06'38" E
C19	305.79'	115.43'	114.75'	S 56°46'54" E
C20	220.14'	58.91'	58.74'	S 58°13'26" E
C21	205.62'	62.53'	62.29'	S 56°06'42" E
C22	1093.37'	75.30'	75.29'	S 78°43'53" E
C23	102.65'	72.52'	71.02'	S 57°12'20" E
C24	203.29'	127.05'	124.99'	S 17°27'15" E
C25	97.92'	82.31'	79.91'	S 27°33'44" E
C26	113.85'	62.92'	62.13'	S 55°02'52" E
C27	153.44'	95.32'	93.79'	S 27°28'44" E
C28	63.24'	91.54'	83.75'	S 37°54'59" E
C29	565.69'	138.97'	138.62'	S 65°59'03" E
C30	125.99'	113.26'	109.49'	S 42°45'06" E
C31	118.23'	60.67'	60.00'	S 34°09'31" E
C32	50.99'	65.79'	61.32'	S 89°52'20" E
C33	65.40'	82.16'	76.86'	N 73°05'03" E
C34	90.54'	75.56'	73.38'	S 41°46'38" E
C35	424.66'	540.27'	504.56'	N 88°38'07" E
C36	306.30'	277.69'	268.28'	N 72°20'55" E
C37	128.54'	73.87'	72.86'	N 80°18'25" E
C38	223.17'	184.90'	179.65'	N 79°26'09" E
C39	53.46'	92.20'	81.19'	N 55°43'44" E
C40	139.61'	148.36'	141.48'	N 03°10'47" W

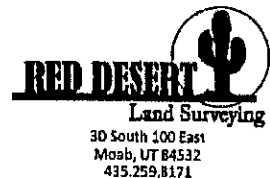


EXHIBIT B
COUNTY ROAD VACATION

Project 149-20
Date 12/17/20
Sheet 2 of 2