

10267396

10267396
11/05/2007 03:16 PM \$197.00
Book - 9533 Pg - 9662 A-E
GARY W. OTT
RECORDER, SALT LAKE COUNTY, UTAH
MOUNTAIN VIEW TITLE & ESCROW
5732 S 1475 E #100
OGDEN UT 84403
BY: KLD, DEPUTY - MI \ P.

6

Name: COUNTRY CLUB VIEW CONDOMINIUM
MS

Desc: 16-15-31.32 16-15-359-012, -
017

Fee: \$197.00

of Pages: FIVE

PLAT

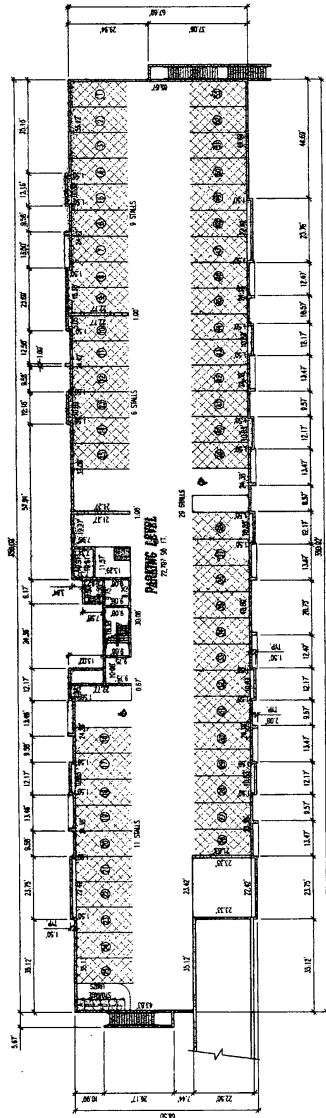
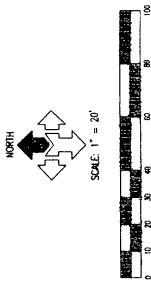
SEE ONLINE PLATS AT
<http://slcorecorder.siredocs.com>

BK 9533 PG 9662

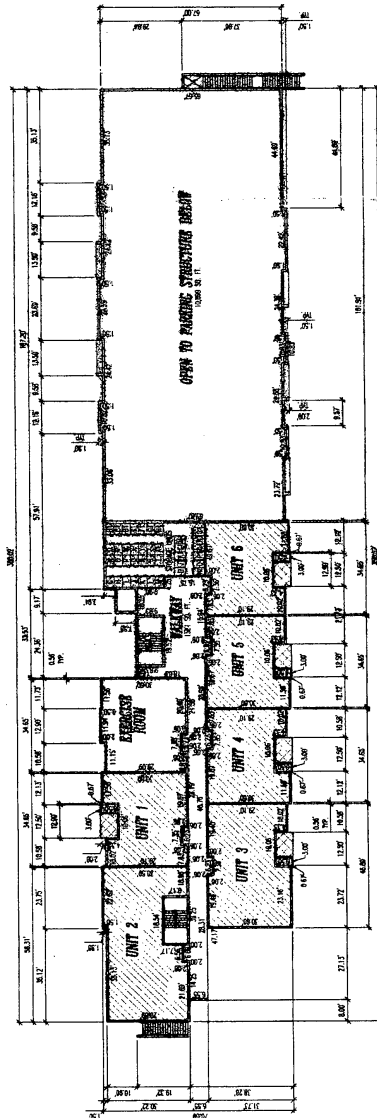
COUNTRY CLUB VIEW CONDOMINIUMS

A UTAH CONDOMINIUM PROJECT

LOCATED IN THE SOUTHWEST QUARTER OF SECTION 15,
TOWNSHIP 1 SOUTH, RANGE 1 EAST, SALT LAKE BASE AND MERIDIAN
2011 SOUTH 2100 EAST
SALT LAKE CITY, UTAH



PARKING LEVEL



LOWER LEVEL

UNIT #	FINISH	TYPE
UNIT 1	UNIT 1	UNIT 1
UNIT 2	UNIT 2	UNIT 2
UNIT 3	UNIT 3	UNIT 3
UNIT 4	UNIT 4	UNIT 4
UNIT 5	UNIT 5	UNIT 5
UNIT 6	UNIT 6	UNIT 6

LEGEND

[Hatching Pattern]	UNIT 1
[Hatching Pattern]	UNIT 2
[Hatching Pattern]	UNIT 3
[Hatching Pattern]	UNIT 4
[Hatching Pattern]	UNIT 5
[Hatching Pattern]	UNIT 6

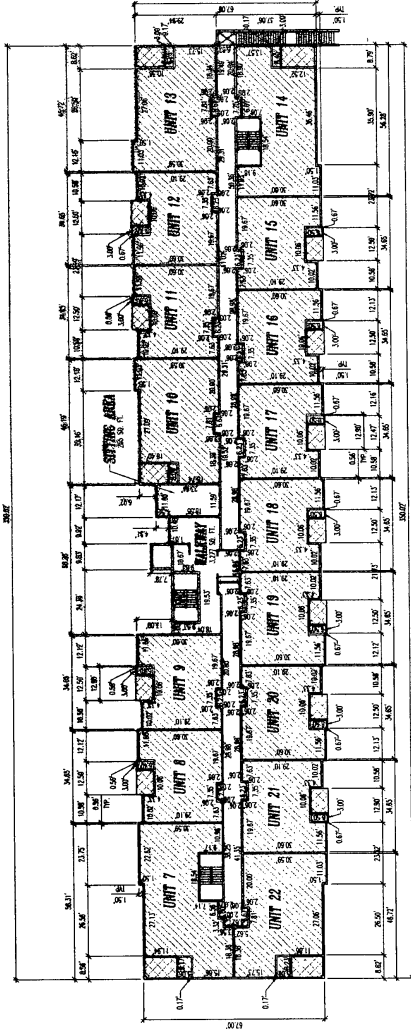
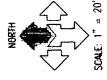
SHEET 2 OF 5

RECORDED # 102473916
 FILED IN THE OFFICE OF THE CLERK OF COURTS, SALT LAKE COUNTY, UTAH
 DATE 05/15/2012 BY 2:58 PM
 102473916

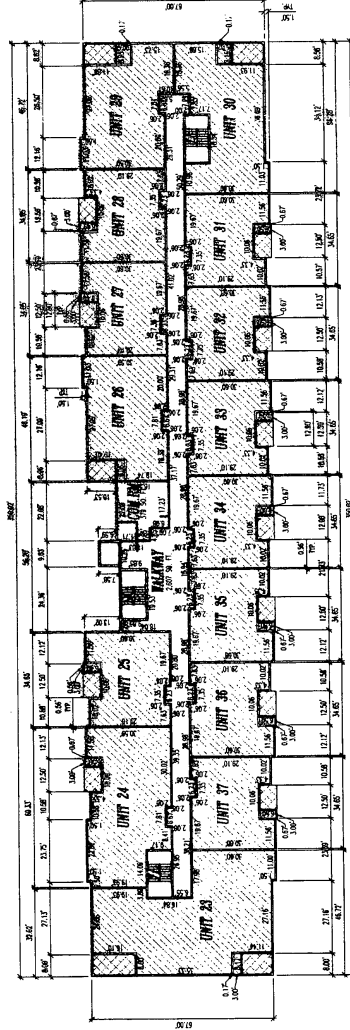
DESIGNED BY:
**MCNEIL ENGINEERING
 AND LAND SURVEYING, L.L.C.**
 6995 SOUTH 900 EAST, MIDVALE, UT 84047
 TEL (801) 255-7700 FAX (801) 255-8071

COUNTRY CLUB VIEW CONDOMINIUMS

A UTAH CONDOMINIUM PROJECT
 LOCATED IN THE SOUTHWEST QUARTER OF SECTION 15,
 TOWNSHIP 1 SOUTH, RANGE 1 EAST, SALT LAKE BASE AND MERIDIAN
 2011 SOUTH 2100 EAST
 SALT LAKE CITY, UTAH



MAIN LEVEL



SECOND LEVEL

UNIT #	INDOOR SPACE (SQ FT)	ACQUISITION COST
UNIT 1	1,035	1,035
UNIT 2	1,035	1,035
UNIT 3	1,035	1,035
UNIT 4	1,035	1,035
UNIT 5	1,035	1,035
UNIT 6	1,035	1,035
UNIT 7	1,035	1,035
UNIT 8	1,035	1,035
UNIT 9	1,035	1,035
UNIT 10	1,035	1,035
UNIT 11	1,035	1,035
UNIT 12	1,035	1,035
UNIT 13	1,035	1,035
UNIT 14	1,035	1,035
UNIT 15	1,035	1,035
UNIT 16	1,035	1,035
UNIT 17	1,035	1,035
UNIT 18	1,035	1,035
UNIT 19	1,035	1,035
UNIT 20	1,035	1,035
UNIT 21	1,035	1,035
UNIT 22	1,035	1,035
UNIT 23	1,035	1,035
UNIT 24	1,035	1,035
UNIT 25	1,035	1,035
UNIT 26	1,035	1,035
UNIT 27	1,035	1,035
UNIT 28	1,035	1,035
UNIT 29	1,035	1,035
UNIT 30	1,035	1,035
UNIT 31	1,035	1,035
UNIT 32	1,035	1,035
UNIT 33	1,035	1,035
UNIT 34	1,035	1,035
UNIT 35	1,035	1,035
UNIT 36	1,035	1,035
UNIT 37	1,035	1,035
UNIT 38	1,035	1,035
UNIT 39	1,035	1,035
UNIT 40	1,035	1,035
UNIT 41	1,035	1,035
UNIT 42	1,035	1,035
UNIT 43	1,035	1,035
UNIT 44	1,035	1,035
UNIT 45	1,035	1,035
UNIT 46	1,035	1,035
UNIT 47	1,035	1,035
UNIT 48	1,035	1,035
UNIT 49	1,035	1,035
UNIT 50	1,035	1,035
UNIT 51	1,035	1,035
UNIT 52	1,035	1,035
UNIT 53	1,035	1,035
UNIT 54	1,035	1,035
UNIT 55	1,035	1,035
UNIT 56	1,035	1,035
UNIT 57	1,035	1,035
UNIT 58	1,035	1,035
UNIT 59	1,035	1,035
UNIT 60	1,035	1,035

LEGEND

- CONCRETE STRUCTURE
- FINISHED COMMON AREA
- COMMON AREA

SHEET 3 OF 5

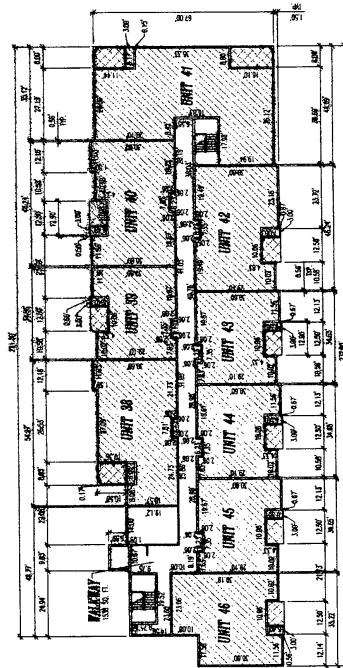
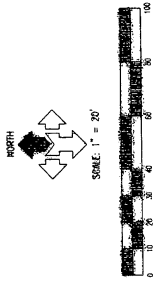
RECORDED & RETURNED TO THE OFFICE OF THE COUNTY CLERK, SALT LAKE COUNTY, UTAH, ON 05/11/2011 AT 10:00 AM. THE ORIGINAL RECORDING IS FILED IN THE PUBLIC RECORDS OFFICE, SALT LAKE COUNTY, UTAH. THE ORIGINAL RECORDING IS FILED IN THE PUBLIC RECORDS OFFICE, SALT LAKE COUNTY, UTAH. THE ORIGINAL RECORDING IS FILED IN THE PUBLIC RECORDS OFFICE, SALT LAKE COUNTY, UTAH.

DESIGNED BY:
MCNEIL ENGINEERING AND LAND SURVEYING, I.C.
 6885 SOUTH 800 EAST, MORGAN, UTAH 84071
 TEL. (801) 255-7700 FAX (801) 255-8071

COUNTRY CLUB VIEW CONDOMINIUMS

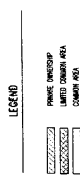
A UTAH CONDOMINIUM PROJECT

LOCATED IN THE SOUTHWEST QUARTER OF SECTION 15,
TOWNSHIP 1 SOUTH, RANGE 1 EAST, SALT LAKE BASE AND MERIDIAN
2011 SOUTH 2100 EAST
SALT LAKE CITY, UTAH




THIRD LEVEL

UNIT #	NET AREA (SQ. FT.)	GROSS AREA (SQ. FT.)
UNIT 46	1,100	1,200
UNIT 47	1,100	1,200
UNIT 48	1,100	1,200
UNIT 49	1,100	1,200
UNIT 50	1,100	1,200
UNIT 51	1,100	1,200
UNIT 52	1,100	1,200
UNIT 53	1,100	1,200
UNIT 54	1,100	1,200
UNIT 55	1,100	1,200
UNIT 56	1,100	1,200
UNIT 57	1,100	1,200
UNIT 58	1,100	1,200
UNIT 59	1,100	1,200
UNIT 60	1,100	1,200
UNIT 61	1,100	1,200
UNIT 62	1,100	1,200
UNIT 63	1,100	1,200
UNIT 64	1,100	1,200
UNIT 65	1,100	1,200
UNIT 66	1,100	1,200
UNIT 67	1,100	1,200
UNIT 68	1,100	1,200
UNIT 69	1,100	1,200
UNIT 70	1,100	1,200
UNIT 71	1,100	1,200
UNIT 72	1,100	1,200
UNIT 73	1,100	1,200
UNIT 74	1,100	1,200
UNIT 75	1,100	1,200
UNIT 76	1,100	1,200
UNIT 77	1,100	1,200
UNIT 78	1,100	1,200
UNIT 79	1,100	1,200
UNIT 80	1,100	1,200
UNIT 81	1,100	1,200
UNIT 82	1,100	1,200
UNIT 83	1,100	1,200
UNIT 84	1,100	1,200
UNIT 85	1,100	1,200
UNIT 86	1,100	1,200
UNIT 87	1,100	1,200
UNIT 88	1,100	1,200
UNIT 89	1,100	1,200
UNIT 90	1,100	1,200
UNIT 91	1,100	1,200
UNIT 92	1,100	1,200
UNIT 93	1,100	1,200
UNIT 94	1,100	1,200
UNIT 95	1,100	1,200
UNIT 96	1,100	1,200
UNIT 97	1,100	1,200
UNIT 98	1,100	1,200
UNIT 99	1,100	1,200
UNIT 100	1,100	1,200



SHEET 4 OF 8
 REVIEWED BY: [Signature]
 DATE: [Date]
 PROJECT: [Project Name]


McNEIL ENGINEERING AND SURVEYING, L.C.
 8520 SOUTH 900 EAST, WARRALE, UTAH 84047
 FAX (801) 252-8071

