

BRINGHURST STATION INDUSTRIAL PARK
 LOCATED IN THE NORTHEAST, SOUTHWEST, AND SOUTHWEST QUARTERS OF SECTION 22,
 TOWNSHIP 4 SOUTH, RANGE 1 WEST, ACT LAKE AREA, IRON COUNTY, ILLINOIS

PLANNING COMMISSION APPROVAL
 APPROVED THIS 29th DAY OF JULY 2024 BY THE PLANNING COMMISSION OF THE CITY OF BRINGHURST, ILLINOIS

CITY COUNCIL APPROVAL
 APPROVED THIS 29th DAY OF JULY 2024 BY THE CITY COUNCIL OF THE CITY OF BRINGHURST, ILLINOIS

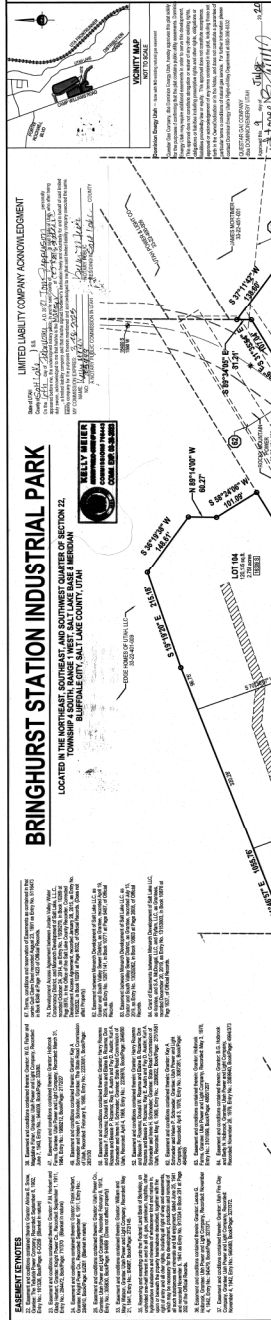
APPROVAL AS TO FORM
 APPROVED THIS 29th DAY OF JULY 2024 BY THE CITY CLERK OF THE CITY OF BRINGHURST, ILLINOIS

CITY ENGINEER APPROVAL
 APPROVED THIS 29th DAY OF JULY 2024 BY THE CITY ENGINEER OF THE CITY OF BRINGHURST, ILLINOIS

SOUTH VALLEY SENIOR DISTRICT
 APPROVED THIS 29th DAY OF JULY 2024 BY THE DISTRICT BOARD OF THE SOUTH VALLEY SENIOR DISTRICT OF BRINGHURST, ILLINOIS

WEST LAKE COUNTY SENIOR DISTRICT
 APPROVED THIS 29th DAY OF JULY 2024 BY THE DISTRICT BOARD OF THE WEST LAKE COUNTY SENIOR DISTRICT OF BRINGHURST, ILLINOIS

ENSON
 A DIVISION OF THE ENSON GROUP, INC.
 1000 WEST LAKE AVENUE, SUITE 200
 BRINGHURST, ILLINOIS 62008
 PHONE: 618-231-1111
 FAX: 618-231-1112
 WWW.ENSONGROUP.COM



OWNER'S DEDICATION
 APPROVED BY THE BOARD OF SUPERVISORS OF IRON COUNTY, ILLINOIS, ON JULY 29, 2024.

BRINGHURST STATION INDUSTRIAL PARK
 LOCATED IN THE NORTHEAST, SOUTHWEST, AND SOUTHWEST QUARTERS OF SECTION 22,
 TOWNSHIP 4 SOUTH, RANGE 1 WEST, ACT LAKE AREA, IRON COUNTY, ILLINOIS

BRINGHURST STATION INDUSTRIAL PARK
 TOWNSHIP 4 SOUTH, RANGE 1 WEST, ACT LAKE AREA, IRON COUNTY, ILLINOIS

LEGEND

EXISTING STREET EASEMENT
 SECTION CORNER
 CENTER LINE
 EASEMENT LINE
 EASEMENT LINE
 STREET LIGHT

CHURCH TABLE

CHURCH	SECTOR	SECTION	RANGE	TOWNSHIP
PC1	400P	400P	1700P	1700P
PC2	400P	400P	1700P	1700P
PC3	400P	400P	1700P	1700P
PC4	400P	400P	1700P	1700P
PC5	400P	400P	1700P	1700P
PC6	400P	400P	1700P	1700P
PC7	400P	400P	1700P	1700P
PC8	400P	400P	1700P	1700P
PC9	400P	400P	1700P	1700P
PC10	400P	400P	1700P	1700P
PC11	400P	400P	1700P	1700P
PC12	400P	400P	1700P	1700P

LINE TABLE

LINE	LENGTH	BEARING	ORDER
1	114.00	S 89° 14' 00" W	1
2	114.00	S 89° 14' 00" W	2
3	114.00	S 89° 14' 00" W	3
4	114.00	S 89° 14' 00" W	4
5	114.00	S 89° 14' 00" W	5
6	114.00	S 89° 14' 00" W	6
7	114.00	S 89° 14' 00" W	7
8	114.00	S 89° 14' 00" W	8
9	114.00	S 89° 14' 00" W	9
10	114.00	S 89° 14' 00" W	10
11	114.00	S 89° 14' 00" W	11
12	114.00	S 89° 14' 00" W	12
13	114.00	S 89° 14' 00" W	13
14	114.00	S 89° 14' 00" W	14
15	114.00	S 89° 14' 00" W	15
16	114.00	S 89° 14' 00" W	16
17	114.00	S 89° 14' 00" W	17
18	114.00	S 89° 14' 00" W	18
19	114.00	S 89° 14' 00" W	19
20	114.00	S 89° 14' 00" W	20
21	114.00	S 89° 14' 00" W	21
22	114.00	S 89° 14' 00" W	22
23	114.00	S 89° 14' 00" W	23
24	114.00	S 89° 14' 00" W	24
25	114.00	S 89° 14' 00" W	25
26	114.00	S 89° 14' 00" W	26
27	114.00	S 89° 14' 00" W	27
28	114.00	S 89° 14' 00" W	28
29	114.00	S 89° 14' 00" W	29
30	114.00	S 89° 14' 00" W	30
31	114.00	S 89° 14' 00" W	31
32	114.00	S 89° 14' 00" W	32
33	114.00	S 89° 14' 00" W	33
34	114.00	S 89° 14' 00" W	34
35	114.00	S 89° 14' 00" W	35
36	114.00	S 89° 14' 00" W	36
37	114.00	S 89° 14' 00" W	37
38	114.00	S 89° 14' 00" W	38
39	114.00	S 89° 14' 00" W	39
40	114.00	S 89° 14' 00" W	40
41	114.00	S 89° 14' 00" W	41
42	114.00	S 89° 14' 00" W	42
43	114.00	S 89° 14' 00" W	43
44	114.00	S 89° 14' 00" W	44
45	114.00	S 89° 14' 00" W	45
46	114.00	S 89° 14' 00" W	46
47	114.00	S 89° 14' 00" W	47
48	114.00	S 89° 14' 00" W	48
49	114.00	S 89° 14' 00" W	49
50	114.00	S 89° 14' 00" W	50
51	114.00	S 89° 14' 00" W	51
52	114.00	S 89° 14' 00" W	52
53	114.00	S 89° 14' 00" W	53
54	114.00	S 89° 14' 00" W	54
55	114.00	S 89° 14' 00" W	55
56	114.00	S 89° 14' 00" W	56
57	114.00	S 89° 14' 00" W	57
58	114.00	S 89° 14' 00" W	58
59	114.00	S 89° 14' 00" W	59
60	114.00	S 89° 14' 00" W	60
61	114.00	S 89° 14' 00" W	61
62	114.00	S 89° 14' 00" W	62
63	114.00	S 89° 14' 00" W	63
64	114.00	S 89° 14' 00" W	64
65	114.00	S 89° 14' 00" W	65
66	114.00	S 89° 14' 00" W	66
67	114.00	S 89° 14' 00" W	67
68	114.00	S 89° 14' 00" W	68
69	114.00	S 89° 14' 00" W	69
70	114.00	S 89° 14' 00" W	70
71	114.00	S 89° 14' 00" W	71
72	114.00	S 89° 14' 00" W	72
73	114.00	S 89° 14' 00" W	73
74	114.00	S 89° 14' 00" W	74
75	114.00	S 89° 14' 00" W	75
76	114.00	S 89° 14' 00" W	76
77	114.00	S 89° 14' 00" W	77
78	114.00	S 89° 14' 00" W	78
79	114.00	S 89° 14' 00" W	79
80	114.00	S 89° 14' 00" W	80
81	114.00	S 89° 14' 00" W	81
82	114.00	S 89° 14' 00" W	82
83	114.00	S 89° 14' 00" W	83
84	114.00	S 89° 14' 00" W	84
85	114.00	S 89° 14' 00" W	85
86	114.00	S 89° 14' 00" W	86
87	114.00	S 89° 14' 00" W	87
88	114.00	S 89° 14' 00" W	88
89	114.00	S 89° 14' 00" W	89
90	114.00	S 89° 14' 00" W	90
91	114.00	S 89° 14' 00" W	91
92	114.00	S 89° 14' 00" W	92
93	114.00	S 89° 14' 00" W	93
94	114.00	S 89° 14' 00" W	94
95	114.00	S 89° 14' 00" W	95
96	114.00	S 89° 14' 00" W	96
97	114.00	S 89° 14' 00" W	97
98	114.00	S 89° 14' 00" W	98
99	114.00	S 89° 14' 00" W	99
100	114.00	S 89° 14' 00" W	100
101	114.00	S 89° 14' 00" W	101
102	114.00	S 89° 14' 00" W	102
103	114.00	S 89° 14' 00" W	103
104	114.00	S 89° 14' 00" W	104
105	114.00	S 89° 14' 00" W	105
106	114.00	S 89° 14' 00" W	106
107	114.00	S 89° 14' 00" W	107
108	114.00	S 89° 14' 00" W	108
109	114.00	S 89° 14' 00" W	109
110	114.00	S 89° 14' 00" W	110
111	114.00	S 89° 14' 00" W	111
112	114.00	S 89° 14' 00" W	112
113	114.00	S 89° 14' 00" W	113
114	114.00	S 89° 14' 00" W	114

BRINGHURST STATION INDUSTRIAL PARK
 TOWNSHIP 4 SOUTH, RANGE 1 WEST, ACT LAKE AREA, IRON COUNTY, ILLINOIS

BRINGHURST STATION INDUSTRIAL PARK
 TOWNSHIP 4 SOUTH, RANGE 1 WEST, ACT LAKE AREA, IRON COUNTY, ILLINOIS

ENSON
 A DIVISION OF THE ENSON GROUP, INC.
 1000 WEST LAKE AVENUE, SUITE 200
 BRINGHURST, ILLINOIS 62008
 PHONE: 618-231-1111
 FAX: 618-231-1112
 WWW.ENSONGROUP.COM

BRINGHURST STATION INDUSTRIAL PARK
 TOWNSHIP 4 SOUTH, RANGE 1 WEST, ACT LAKE AREA, IRON COUNTY, ILLINOIS

BRINGHURST STATION INDUSTRIAL PARK
 TOWNSHIP 4 SOUTH, RANGE 1 WEST, ACT LAKE AREA, IRON COUNTY, ILLINOIS

ENSON
 A DIVISION OF THE ENSON GROUP, INC.
 1000 WEST LAKE AVENUE, SUITE 200
 BRINGHURST, ILLINOIS 62008
 PHONE: 618-231-1111
 FAX: 618-231-1112
 WWW.ENSONGROUP.COM

BRINGHURST STATION INDUSTRIAL PARK
 TOWNSHIP 4 SOUTH, RANGE 1 WEST, ACT LAKE AREA, IRON COUNTY, ILLINOIS

BRINGHURST STATION INDUSTRIAL PARK
 TOWNSHIP 4 SOUTH, RANGE 1 WEST, ACT LAKE AREA, IRON COUNTY, ILLINOIS

ENSON
 A DIVISION OF THE ENSON GROUP, INC.
 1000 WEST LAKE AVENUE, SUITE 200
 BRINGHURST, ILLINOIS 62008
 PHONE: 618-231-1111
 FAX: 618-231-1112
 WWW.ENSONGROUP.COM

BRINGHURST STATION INDUSTRIAL PARK
 TOWNSHIP 4 SOUTH, RANGE 1 WEST, ACT LAKE AREA, IRON COUNTY, ILLINOIS

BRINGHURST STATION INDUSTRIAL PARK
 TOWNSHIP 4 SOUTH, RANGE 1 WEST, ACT LAKE AREA, IRON COUNTY, ILLINOIS

ENSON
 A DIVISION OF THE ENSON GROUP, INC.
 1000 WEST LAKE AVENUE, SUITE 200
 BRINGHURST, ILLINOIS 62008
 PHONE: 618-231-1111
 FAX: 618-231-1112
 WWW.ENSONGROUP.COM

BRINGHURST STATION INDUSTRIAL PARK
 TOWNSHIP 4 SOUTH, RANGE 1 WEST, ACT LAKE AREA, IRON COUNTY, ILLINOIS

BRINGHURST STATION INDUSTRIAL PARK
 TOWNSHIP 4 SOUTH, RANGE 1 WEST, ACT LAKE AREA, IRON COUNTY, ILLINOIS

ENSON
 A DIVISION OF THE ENSON GROUP, INC.
 1000 WEST LAKE AVENUE, SUITE 200
 BRINGHURST, ILLINOIS 62008
 PHONE: 618-231-1111
 FAX: 618-231-1112
 WWW.ENSONGROUP.COM

BRINGHURST STATION INDUSTRIAL PARK
 TOWNSHIP 4 SOUTH, RANGE 1 WEST, ACT LAKE AREA, IRON COUNTY, ILLINOIS

BRINGHURST STATION INDUSTRIAL PARK
 TOWNSHIP 4 SOUTH, RANGE 1 WEST, ACT LAKE AREA, IRON COUNTY, ILLINOIS

ENSON
 A DIVISION OF THE ENSON GROUP, INC.
 1000 WEST LAKE AVENUE, SUITE 200
 BRINGHURST, ILLINOIS 62008
 PHONE: 618-231-1111
 FAX: 618-231-1112
 WWW.ENSONGROUP.COM

This map is provided solely for the purpose of assisting in locating the property and Cottonwood Title Insurance Agency, Inc. assumes no liability for variation, if any, with any actual survey.