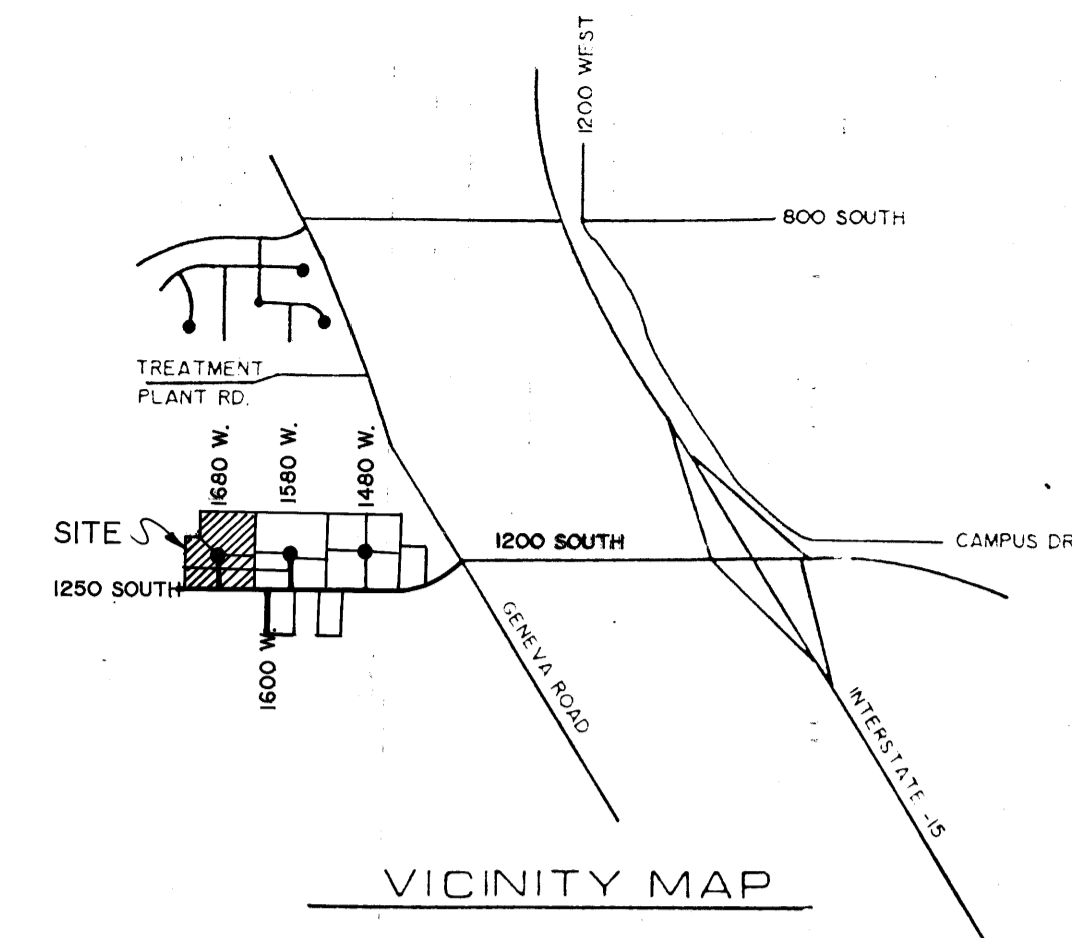
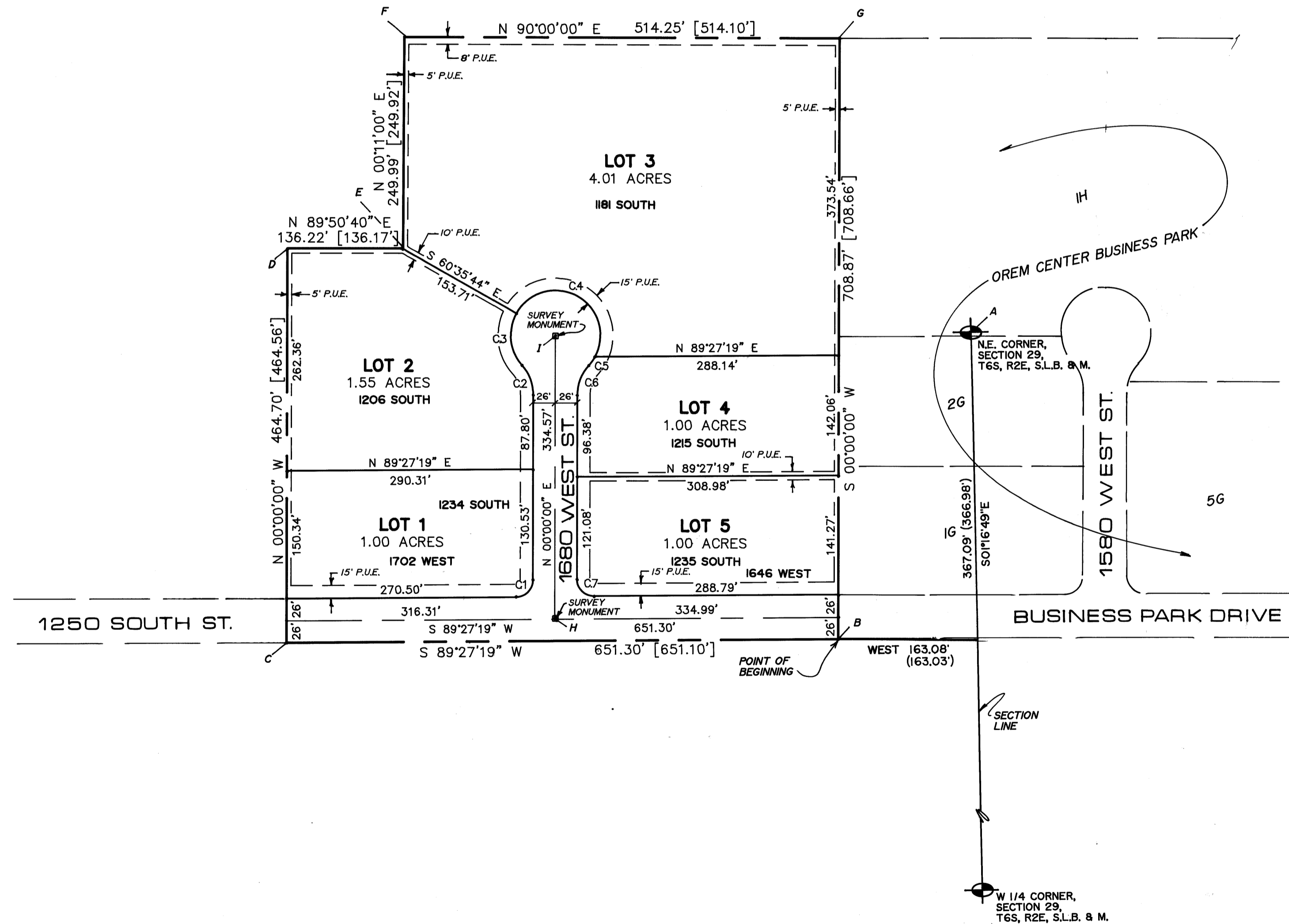


NORTH  
1" = 100'

CURVE	RADIUS	LENGTH	TANGENT	CHORD	BEARING	DELTA
C1	20.00'	31.23'	19.81'	28.15'	N 44°43'40" E	89°27'19"
C2	53.00'	38.68'	20.25'	37.83'	N 20°54'30" W	41°49'00"
C3	53.00'	65.88'	37.96'	61.72'	S 06°12'22" E	71°13'16"
C4	53.00'	165.12'	4046.06'	105.99'	N 61°20'45" W	178°29'57"
C5	53.00'	12.87'	6.47'	12.84'	N 34°51'36" E	13°54'47"
C6	53.00'	38.68'	20.25'	37.83'	S 20°54'30" W	41°49'00"
C7	20.00'	31.61'	20.19'	28.42'	S 45°16'20" E	90°32'41"



VICINITY MAP



PT.	NORTHING	EASTING
A	707,391.91	1,935,048.96
B	707,025.02	1,934,894.13
C	707,018.83	1,934,243.06
D	707,483.39	1,934,243.06
E	707,483.76	1,934,379.23
F	707,733.68	1,934,380.03
G	707,733.68	1,934,894.13
H	707,382.30	1,934,559.26
I	707,047.83	1,934,559.26

5322-65

**SURVEYOR'S CERTIFICATE**

I, ROGER D. DUDLEY, DO HEREBY CERTIFY THAT I AM A REGISTERED LAND SURVEYOR, AND THAT I HOLD CERTIFICATE NO. 3553 AS PRESCRIBED UNDER THE LAWS OF THE STATE OF UTAH. I FURTHER CERTIFY BY AUTHORITY OF THE OWNERS, I HAVE MADE A SURVEY OF THE TRACT OF LAND SHOWN ON THIS PLAT AND DESCRIBED BELOW, AND HAVE SUBDIVIDED SAID TRACT OF LAND INTO LOTS, BLOCKS, STREETS, AND EASEMENTS AND THE SAME HAS BEEN CORRECTLY SURVEYED AND STAKED ON THE GROUND AS SHOWN ON THIS PLAT AND THAT THIS PLAT IS TRUE AND CORRECT.

**BOUNDARY DESCRIPTION**

COMMENCING 501°16'49"E ALONG THE SECTION LINE 367.09 FEET AND WEST 163.08 FEET FROM THE NORTHEAST CORNER OF SECTION 29  
TOWNSHIP 6 SOUTH, RANGE 2 EAST, SALT LAKE BASE & MERIDIAN, THENCE AS FOLLOWS

BEARING	DISTANCE	REMARKS
S89°27'19"W	651.30'	
N00°00'00"W	464.70'	
N89°50'40"E	136.22'	
N00°11'00"E	249.99'	
N90°00'00"E	514.25'	
S00°00'00"W	708.87'	ALONG PLAT "G" OREM CENTER BUSINESS PARK, TO THE POINT OF BEGINNING.
AREA = 9.86 ACRES		

BASIS OF BEARING = 501°16'49"E ALONG THE SECTION LINE  
JULY 1, 1993

*[Signature]*  
SURVEYOR  
(See Seal Below)

**OWNER'S DEDICATION**

KNOW ALL MEN BY THESE PRESENTS THAT WE, ALL OF THE UNDERSIGNED OWNERS OF ALL OF THE PROPERTY DESCRIBED IN THE SURVEYOR'S CERTIFICATE HEREON AND SHOWN ON THIS MAP, HAVE CAUSED THE SAME TO BE SUBDIVIDED INTO LOTS, BLOCKS, STREETS AND EASEMENTS AND DO HEREBY DEDICATE THE STREETS AND OTHER PUBLIC AREAS AS INDICATED HEREON FOR PERPETUAL USE OF THE PUBLIC. IN WITNESS WHEREOF WE HAVE HEREUNTO SET OUR HANDS THIS 12<sup>TH</sup> DAY OF NOV., A.D. 1993

Orem Tek Development Corp  
*[Signature]*  
Mt. West Title Company  
ACKNOWLEDGEMENT  
STATE OF UTAH } S.S.  
COUNTY OF UTAH }

ON THE 12<sup>TH</sup> DAY OF NOV., A.D. 1993 PERSONALLY APPEARED BEFORE ME THE SIGNERS OF THE FOREGOING DEDICATION WHO DULY ACKNOWLEDGED TO ME THAT THEY DID EXECUTE THE SAME.  
MY COMMISSION EXPIRES 3-1-96  
NOTARY PUBLIC  
(See Seal Below)

**ACCEPTANCE BY THE CITY OF OREM**

THE CITY OF OREM, COUNTY OF UTAH, APPROVES THIS SUBDIVISION AND HEREBY ACCEPTS THE DEDICATION OF ALL STREETS, EASEMENTS, AND OTHER PARCELS OF LAND INTENDED FOR PUBLIC PURPOSES FOR THE PERPETUAL USE OF THE PUBLIC THIS 21<sup>ST</sup> DAY OF JULY, A.D. 1993

PC-93-0142  
APPROVED BY RESOLUTION  
CITY MANAGER  
ATTEST  
CITY ENGINEER  
CITY RECORDER  
(See Seal Below)

**BOARD OF HEALTH**

APPROVED SUBJECT TO THE FOLLOWING CONDITIONS

**PLANNING COMMISSION APPROVAL**

APPROVED THIS 21<sup>ST</sup> DAY OF JULY, A.D. 1993 BY THE OREM CITY PLANNING COMMISSION.  
DIRECTOR-SECRETARY  
CHAIRMAN, PLANNING COMMISSION

**OCCUPANCY RESTRICTION NOTICE**

THE CITY OF OREM HAS AN ORDINANCE WHICH RESTRICTS THE OCCUPANCY OF BUILDINGS WITHIN THIS SUBDIVISION. ACCORDINGLY, IT IS UNLAWFUL TO OCCUPY ANY BUILDING LOCATED WITHIN THIS SUBDIVISION WITHOUT FIRST HAVING OBTAINED A CERTIFICATE OF OCCUPANCE ISSUED BY THE CITY.

**CONDITIONS OF APPROVAL**

PLAT "I"

OREM CENTER BUSINESS PARK

SUBDIVISION  
OREM CITY, UTAH COUNTY, UTAH  
SCALE: 1" = 100 FEET

SURVEYOR'S SEAL REGISTERED LAND SURVEYOR No. 3553 ROGER D. DUDLEY STATE OF UTAH	NOTARY PUBLIC SEAL ROGER D. DUDLEY No. 3553 NOTARY PUBLIC STATE OF UTAH COMM. EXP. 5/1/96	CITY-COUNTY ENGINEER SEAL CITY ENGINEER STATE OF UTAH	CITY RECORDER SEAL CITY RECORDER STATE OF UTAH
---------------------------------------------------------------------------------------------	----------------------------------------------------------------------------------------------------------	-------------------------------------------------------------	------------------------------------------------------

APPROVED FOR RECORDING  
JULY 28 1993  
MOUNTAIN WEST TITLE CO.