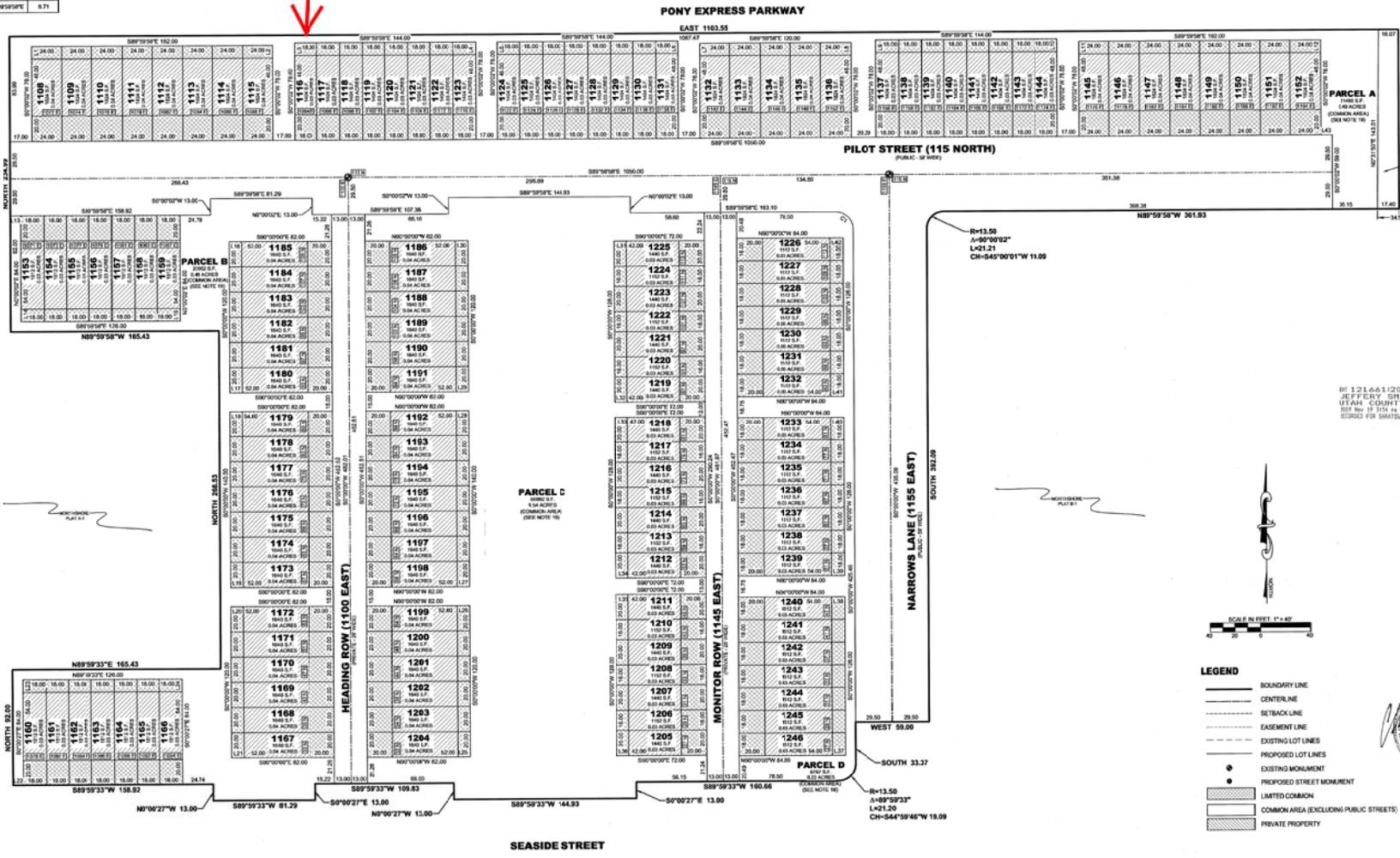




LINE	DIRECTION	LENGTH
L1	S89°02'27"W	10.00
L2	S89°02'27"W	10.00
L3	S89°02'27"W	10.00
L4	S89°02'27"W	10.00
L5	S89°02'27"W	10.00
L6	S89°02'27"W	10.00
L7	S89°02'27"W	10.00
L8	S89°02'27"W	10.00
L9	S89°02'27"W	10.00
L10	S89°02'27"W	10.00
L11	S89°02'27"W	10.00
L12	S89°02'27"W	10.00
L13	S89°02'27"W	10.00
L14	S89°02'27"W	10.00
L15	S89°02'27"W	10.00
L16	S89°02'27"W	10.00
L17	S89°02'27"W	10.00
L18	S89°02'27"W	10.00
L19	S89°02'27"W	10.00
L20	S89°02'27"W	10.00
L21	S89°02'27"W	10.00
L22	S89°02'27"W	10.00
L23	S89°02'27"W	10.00
L24	S89°02'27"W	10.00
L25	S89°02'27"W	10.00
L26	S89°02'27"W	10.00
L27	S89°02'27"W	10.00
L28	S89°02'27"W	10.00
L29	S89°02'27"W	10.00
L30	S89°02'27"W	10.00
L31	S89°02'27"W	10.00
L32	S89°02'27"W	10.00
L33	S89°02'27"W	10.00
L34	S89°02'27"W	10.00
L35	S89°02'27"W	10.00
L36	S89°02'27"W	10.00
L37	S89°02'27"W	10.00
L38	S89°02'27"W	10.00
L39	S89°02'27"W	10.00
L40	S89°02'27"W	10.00

LINE	DIRECTION	LENGTH
L41	S89°02'27"W	10.00
L42	S89°02'27"W	10.00
L43	S89°02'27"W	10.00

CURVE	RADIUS	DELTA	LENGTH	CHORD
C1	13.50	89°59'33"	21.21	14.81



**SARATOGA ROAD**  
PUBLIC ST. 16.00'

**PARCEL A**  
7.00 ACRES  
COMMON AREA  
DECREASE 19'

BY 1216612019 FOR 11840  
JEFFERY SMITH  
UTAH COUNTY RECORDER  
307 N. 115 W. 100 S. 100 E. 100 N.  
RECORDED FOR SARATOGA SPRINGS CITY



- LEGEND**
- BOUNDARY LINE
  - CENTERLINE
  - SETBACK LINE
  - EASEMENT LINE
  - EXISTING LOT LINES
  - PROPOSED LOT LINES
  - EXISTING MONUMENT
  - PROPOSED STREET MONUMENT
  - LIMITED COMMON
  - COMMON AREA (EXCLUDING PUBLIC STREETS)
  - PRIVATE PROPERTY



This map is provided solely for the purpose of assisting in locating the property and Cottonwood Title Insurance Agency, Inc. assumes no liability for variation, if any, with any actual survey.

**NOTE**  
ALL COMMON AREAS ARE A UTILITY AND ACCESS EASEMENT IN ITS ENTIRETY TO THE CITY OF SARATOGA SPRINGS

16840 SHEET 2 OF 2

**NORTHSHORE PLAT C-1**  
(SHEET 2 OF 2)  
LOCATED IN A PORTION OF THE SOUTHWEST QUARTER OF SECTION 24, TOWNSHIP 5 SOUTH, RANGE 1 WEST, AND A PORTION OF THE SOUTHWEST QUARTER OF SECTION 19, TOWNSHIP 5 SOUTH, RANGE 1 EAST, SALT LAKE BASE AND MERIDIAN CITY OF SARATOGA SPRINGS, UTAH COUNTY, UTAH