

PART OF THE SW. 1/4, OF SECTION 17, T.7N., R.1W., S.L.B. & M.  
HEART OF POLE PATCH SUBDIVISION PHASE 1 FIRST AMENDMENT

TAXING UNIT: 63

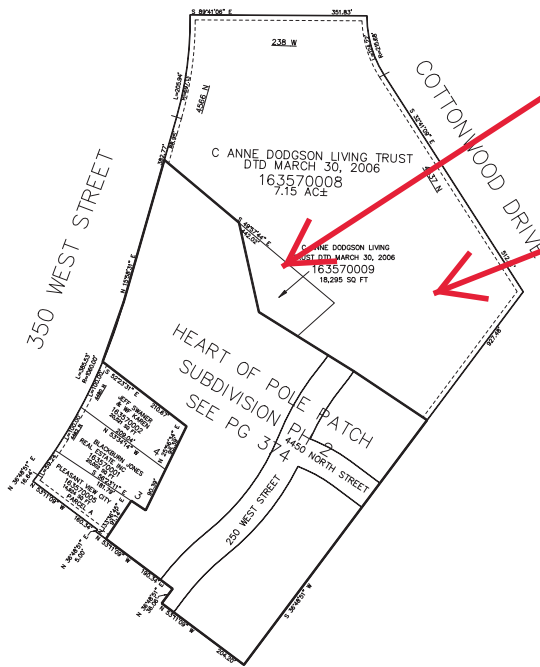
IN PLEASANT VIEW CITY

SCALE 1" = 200'

This map is provided solely for the purpose of assisting in locating the property and Cottonwood Title Insurance Agency, Inc. assumes no liability for variation, if any, with any actual survey.

SEE PAGE 9

4575 NORTH STREET



SEE PAGE 9

SEE PAGE 9

SEE PAGE 9

10' UTILITY & DRAINAGE EASEMENTS EACH SIDE OF PROPERTY LINES AS INDICATED BY DASHED LINES EXCEPT AS OTHERWISE SHOWN.

FOR COMPLETE ENG DATA SEE ORIGINAL DEDICATION PLAT IN BOOK 84, PAGE 53 OF RECORDS.