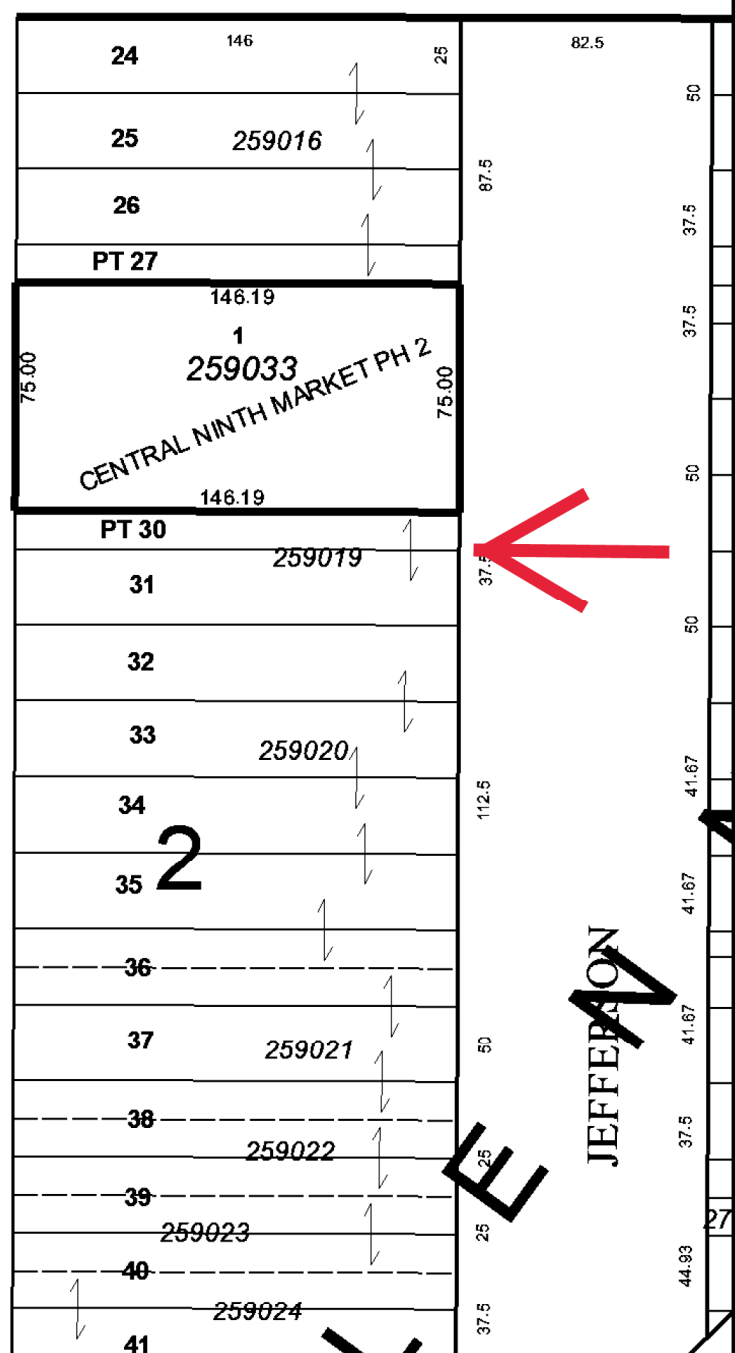
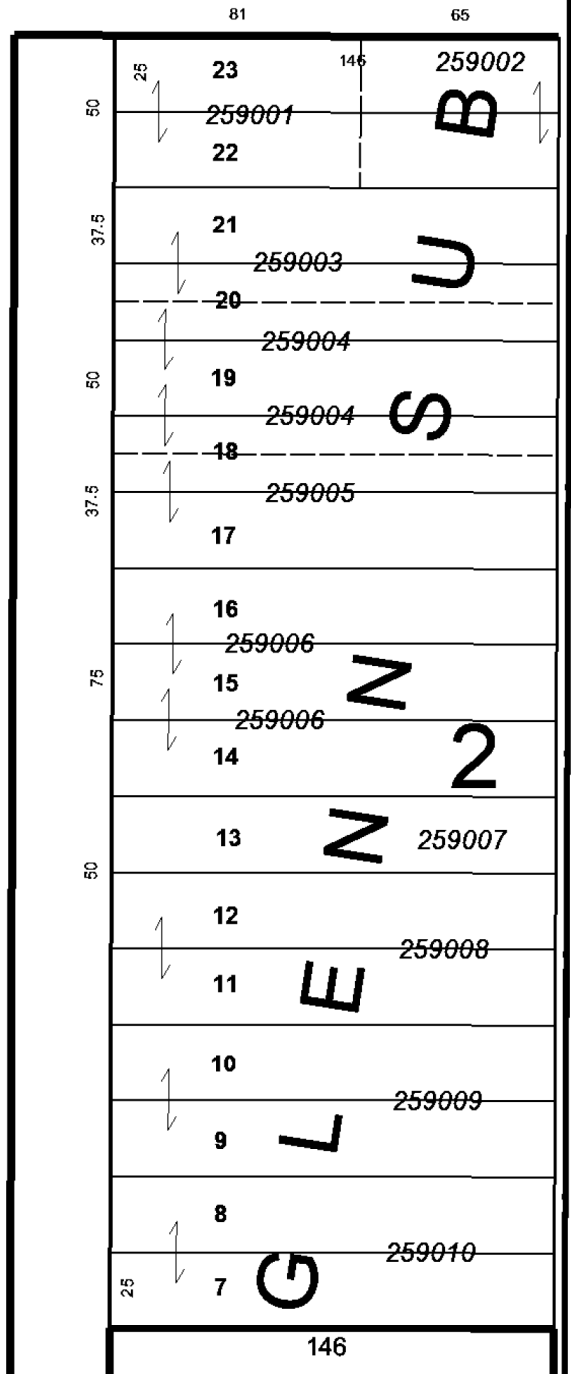


This map is provided solely for the purpose of assisting in locating the property and Cottonwood Title Insurance Agency, Inc. assumes no liability for variation, if any, with any actual survey.

900 S



This map is provided solely for the purpose of assisting in locating the property and Cottonwood Title Insurance Agency, Inc. assumes no liability for variation, if any, with any actual survey.

SURVEYOR'S CERTIFICATE.

I hereby certify that the plat of land shown on this map was made by Mr. W. B. Matheson, a duly qualified surveyor, and that the same was approved by the City Council of Salt Lake City, Utah, on August 2, 1904.

That the same has been correctly placed out in the ground as represented by the plat, and in accordance with the provisions of the Revised Ordinance of 1893, 1897 and of the then used in accordance with the official boundary presented in said ordinance.

NAMES AND DIMENSIONS OF PARCELS OF LAND DESIGNATED FOR

- Jefferson Street 82.5 ft. wide and 574.5 ft. long running North and South with West Street 33 ft.
Jefferson Street 82.5 ft. wide and 574.5 ft. long running North and South with West Street 33 ft.
Jefferson Street 82.5 ft. wide and 574.5 ft. long running North and South with West Street 33 ft.

One Alley 14 ft. wide running North and South through Block 1.
Dimensions of Lots:
Lot 1 34 ft. wide and 156 ft. long
Lot 2 34 ft. wide and 156 ft. long
Lot 3 34 ft. wide and 156 ft. long
Lot 4 34 ft. wide and 156 ft. long
Lot 5 34 ft. wide and 156 ft. long

It was found by Jefferson Street corners with the West corner of Jefferson Street in Jefferson Street Subdivision. The Center line of 1st West Street coincides with the Center line of Town Street in Salt Lake City Survey.
This map is accordingly drawn to a scale of 1/32 = 100 ft.

Witness my hand and seal of office at Salt Lake City, Utah, this 2nd day of July A.D. 1904.
W. B. Matheson, Surveyor

State of Utah
County of Salt Lake, } ss
On this 26th day of July A.D. 1904, personally appeared before me, the undersigned, a Notary Public in and for said County of Salt Lake, Mr. W. B. Matheson (Comptroller of Public Works) the signor of the foregoing instrument, who duly acknowledged to me that they executed the same freely and voluntarily and for the use and purposes herein mentioned.

My commission expires 7th Feb 1907.
W. B. Matheson, Notary Public

Index for Record
August 11th 1906
at Request of
Walter A. Ellis, in Book "I" of Platpage 111

By J. H. Hays, Deputy, County Recorder of Salt Lake Co. Utah.

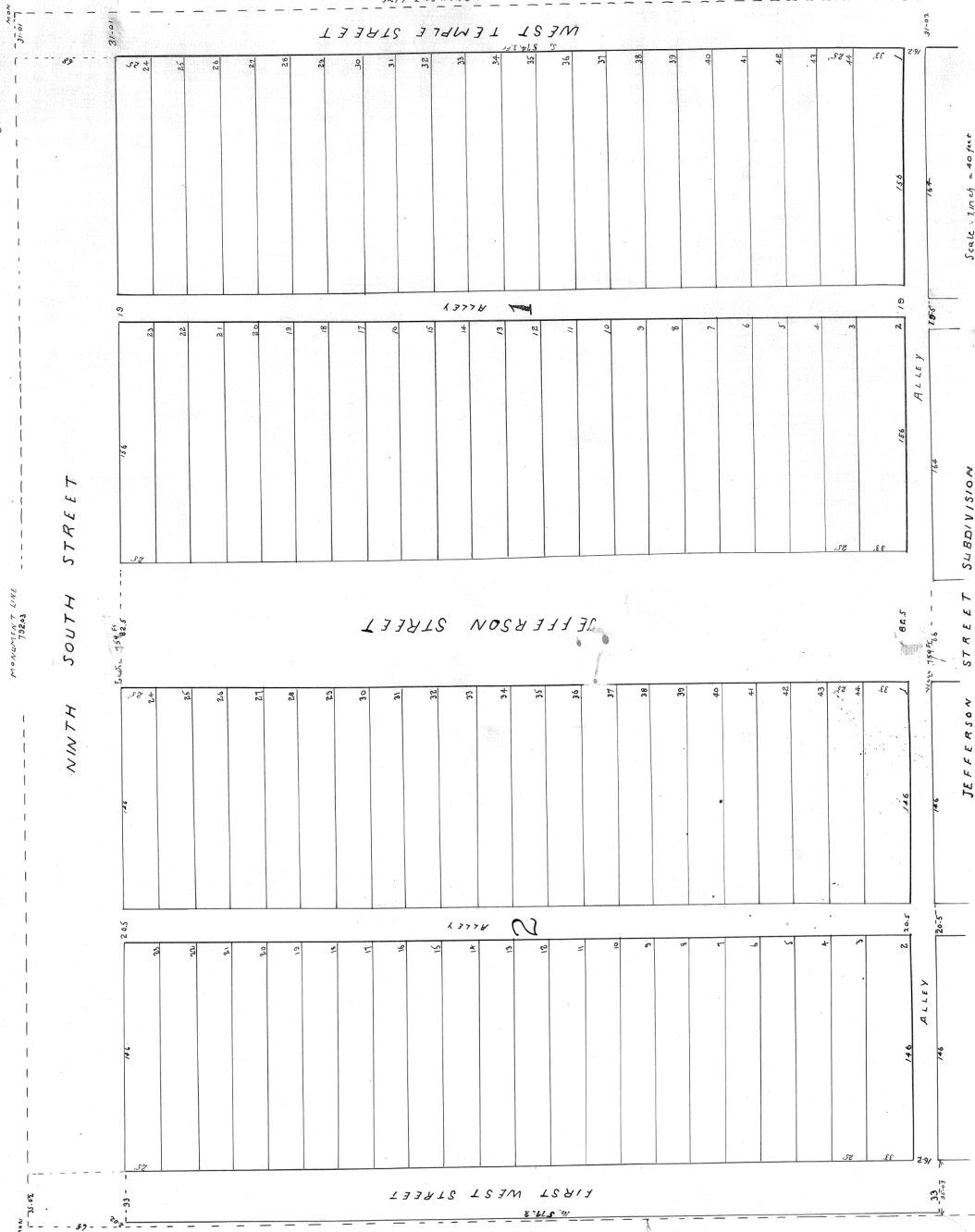
PRESENTED TO THE CITY COUNCIL AND THE CITY ENGINEER AUTHORIZED TO APPROVE AUGUST 2, 1904.

J. P. ... CITY RECORDER

GLEN SUBDIVISION
BEING LOTS 12 AND 13, BLOCK 23 FIVE ACRE PLAT "A"
BIG FIELD SURVEY,
SALT LAKE CITY, UTAH.

APPROVED AUGUST 2, 1904

George W. ...
Charles ...



Scale: 1 inch = 40 feet

D-111