



# SPORTS PARK COMMERCIAL CONDOMINIUMS

AMENDING LOTS 1 & 2 OF SPORTS PARK COMMERCIAL SUBDIVISION  
LOCATED IN THE NORTHWEST QUARTER  
OF SECTION 2,  
TOWNSHIP 2 SOUTH, RANGE 1 WEST  
SALT LAKE BASE AND MERIDIAN  
SANDY CITY, SALT LAKE COUNTY, UTAH

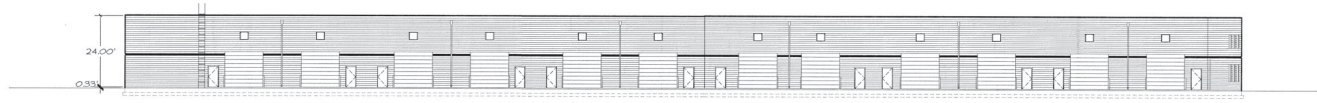
This map is provided solely for the purpose of assisting in locating the property and Cottonwood Title Insurance Agency, Inc. assumes no liability for variation, if any, with any actual survey.



**EAST ELEVATION**  
BUILDING "A"  
SCALE: 1" = 20'



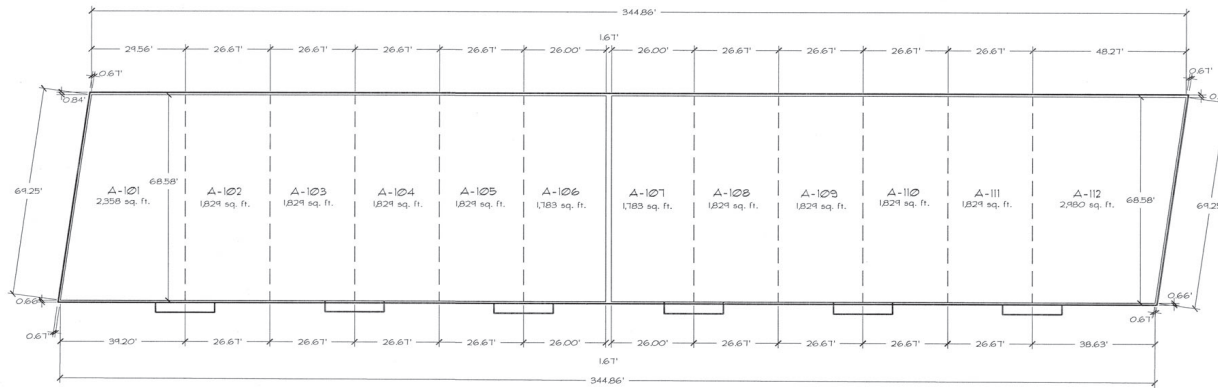
**SOUTH ELEVATION**  
BUILDING "A"  
SCALE: 1" = 20'



**WEST ELEVATION**  
BUILDING "A"  
SCALE: 1" = 20'



**NORTH ELEVATION**  
BUILDING "A"  
SCALE: 1" = 20'



**FLOOR PLAN**  
BUILDING "A"  
SCALE: 1" = 20'

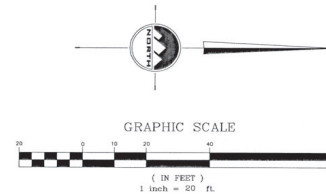
FINISH FLOOR SCHEDULE		
UNIT #	FLOOR	CEILING
A-1 - A-12	4353.6'	4311.6'



**ADDRESS LEGEND**

- UNIT A-101 = 86R SOUTH SANDY PARKWAY, SUITE 101
- UNIT A-102 = 86R SOUTH SANDY PARKWAY, SUITE 102
- UNIT A-103 = 86R SOUTH SANDY PARKWAY, SUITE 103
- UNIT A-104 = 86R SOUTH SANDY PARKWAY, SUITE 104
- UNIT A-105 = 86R SOUTH SANDY PARKWAY, SUITE 105
- UNIT A-106 = 86R SOUTH SANDY PARKWAY, SUITE 106
- UNIT A-107 = 86R SOUTH SANDY PARKWAY, SUITE 107
- UNIT A-108 = 86R SOUTH SANDY PARKWAY, SUITE 108
- UNIT A-109 = 86R SOUTH SANDY PARKWAY, SUITE 109
- UNIT A-110 = 86R SOUTH SANDY PARKWAY, SUITE 110
- UNIT A-111 = 86R SOUTH SANDY PARKWAY, SUITE 111
- UNIT A-112 = 86R SOUTH SANDY PARKWAY, SUITE 112

**BUILDING "A"**



**ENSIGN**  
engineering • planning • surveying  
90 East Fort Union Boulevard, Suite 100 (801) 255-0529  
Midvale, Utah 84047 fax (801) 255-4449

**SPORTS PARK COMMERCIAL  
CONDOMINIUMS**

AMENDING LOTS 1 & 2 OF SPORTS PARK COMMERCIAL  
SUBDIVISION  
LOCATED IN THE NORTHWEST QUARTER  
OF SECTION 1  
TOWNSHIP 2 SOUTH, RANGE 1 WEST  
SALT LAKE BASE AND MERIDIAN  
SANDY CITY, SALT LAKE COUNTY, UTAH

RECORDED • 827343  
STATE OF UTAH, COUNTY OF SALT LAKE, RECORDED AND FILED AT THE  
REQUEST OF **TATE BERENSON REAL ESTATE**  
DATE **10-24-02** THE CLERK, BOOK **2402**, PAGE **158**  
**1158**  
SALT LAKE COUNTY RECORDER

JOB NO. 180-D SHEET 2 OF 3

200P-158



# SPORTS PARK COMMERCIAL CONDOMINIUMS

AMENDING LOTS 1 & 2 OF SPORTS PARK COMMERCIAL SUBDIVISION  
LOCATED IN THE NORTHWEST QUARTER  
OF SECTION 1  
TOWNSHIP 3 SOUTH, RANGE 1 WEST  
SALT LAKE BASE AND MERIDIAN  
SANDY CITY, SALT LAKE COUNTY, UTAH

This map is provided solely for the purpose of assisting in locating the property and Cottonwood Title Insurance Agency, Inc. assumes no liability for variation, if any, with any actual survey.



WEST ELEVATION  
BUILDING "B"  
SCALE: 1" = 20'



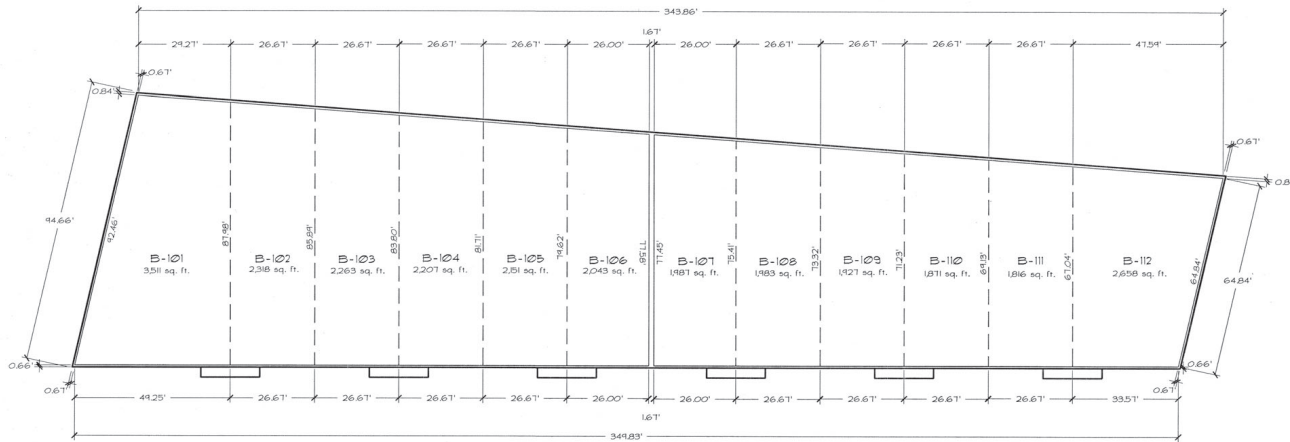
NORTH ELEVATION  
BUILDING "B"  
SCALE: 1" = 20'



EAST ELEVATION  
BUILDING "B"  
SCALE: 1" = 20'



SOUTH ELEVATION  
BUILDING "B"  
SCALE: 1" = 20'



FLOOR PLAN  
BUILDING "B"  
SCALE: 1" = 20'

## BUILDING "B"

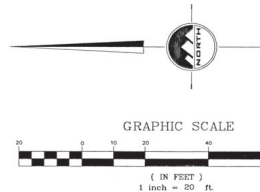
**ADDRESS LEGEND**

UNIT B-101	=	8621 SOUTH SANDY PARKWAY
UNIT B-102	=	8625 SOUTH SANDY PARKWAY
UNIT B-103	=	8629 SOUTH SANDY PARKWAY
UNIT B-104	=	8633 SOUTH SANDY PARKWAY
UNIT B-105	=	8637 SOUTH SANDY PARKWAY
UNIT B-106	=	8641 SOUTH SANDY PARKWAY
UNIT B-107	=	8645 SOUTH SANDY PARKWAY
UNIT B-108	=	8649 SOUTH SANDY PARKWAY
UNIT B-109	=	8653 SOUTH SANDY PARKWAY
UNIT B-110	=	8657 SOUTH SANDY PARKWAY
UNIT B-111	=	8661 SOUTH SANDY PARKWAY
UNIT B-112	=	8665 SOUTH SANDY PARKWAY



**FINISH FLOOR SCHEDULE**

UNIT #	FLOOR	CEILING
B-1 - B-12	4352.2'	4376.2'



**ENSIGN**  
engineering • planning • surveying  
90 East Fort Union, Boulevard, Suite 100 (801) 255-0529  
Midvale, Utah 84047 fax (801) 255-4449

**SPORTS PARK COMMERCIAL  
CONDOMINIUMS**  
AMENDING LOTS 1 & 2 OF SPORTS PARK COMMERCIAL  
SUBDIVISION  
LOCATED IN THE NORTHWEST QUARTER  
OF SECTION 1  
TOWNSHIP 3 SOUTH, RANGE 1 WEST  
SALT LAKE BASE AND MERIDIAN  
SANDY CITY, SALT LAKE COUNTY, UTAH

RECORDED #827343  
STATE OF UTAH, COUNTY OF SALT LAKE, RECORDED AND FILED AT THE  
REQUEST OF  
TATC BRUBAKER REAL ESTATE  
DATE 10-24-12 THE ABOVE BOOK/EXHIBIT PAGE 108  
\$115.00 SALT LAKE COUNTY RECORDER  
FEE \$