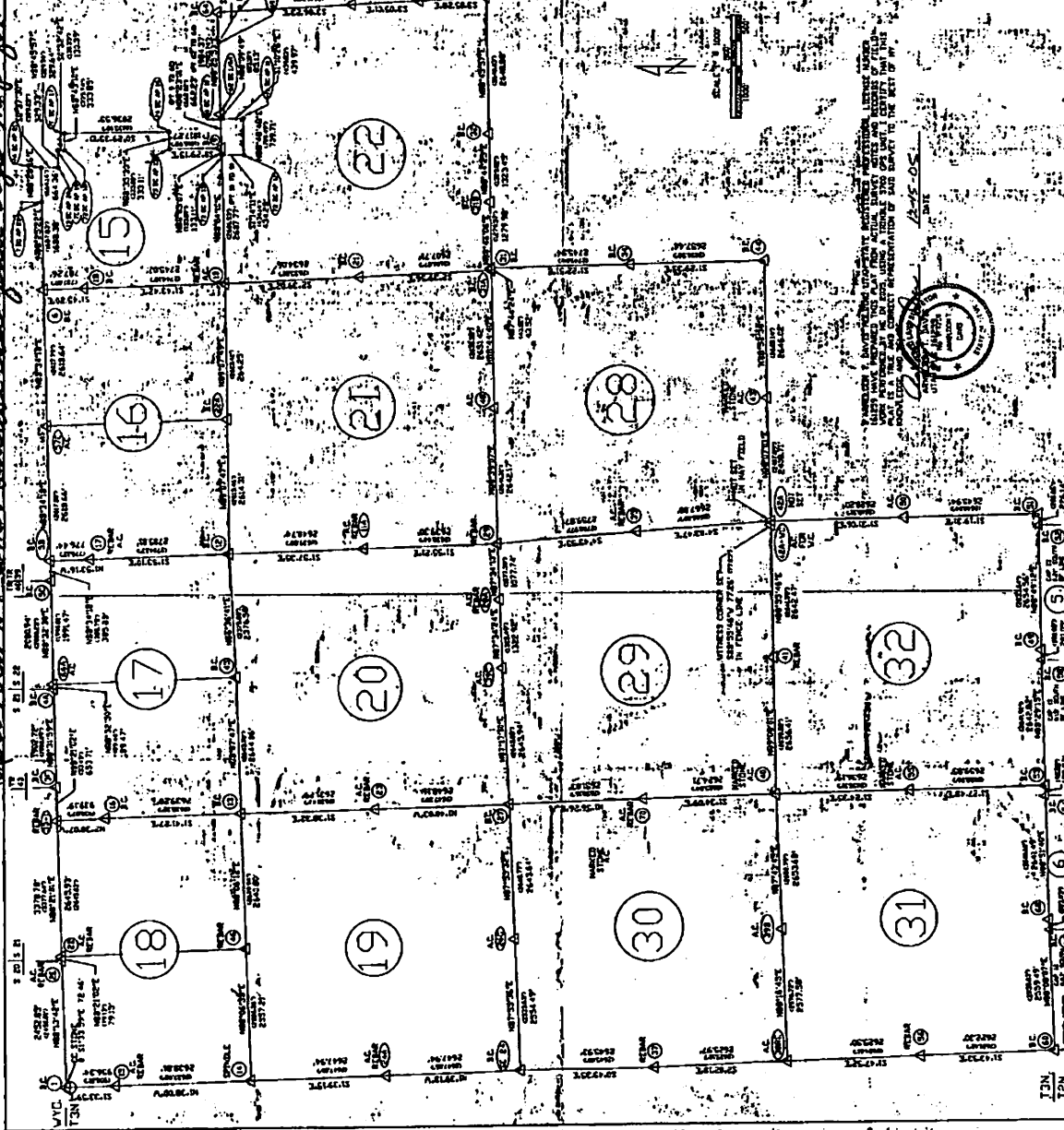


*Recorder's Memo: Please see full size map for original signature*

**DAGGETT COUNTY SURVEY CONTROL PLAT**  
 FOR TOWNSHIP 3 NORTH, RANGE 20 EAST  
 SALT LAKE MERIDIAN

Date: 09-01-2009 11:55 AM  
 Filed By: KERRI PAUL  
 Recorder



ELEVATIONS SHOWN ARE BASED ON NAVD 88 WITH AN ACCURACY OF PLUS OR MINUS ONE FOOT

WESGA COORDINATES

POINT	NORTHING	EASTING	ELEVATION
1	2518242.573	2520242.573	6448.93
2	2518242.573	2520242.573	6448.93
3	2518242.573	2520242.573	6448.93
4	2518242.573	2520242.573	6448.93
5	2518242.573	2520242.573	6448.93
6	2518242.573	2520242.573	6448.93
7	2518242.573	2520242.573	6448.93
8	2518242.573	2520242.573	6448.93
9	2518242.573	2520242.573	6448.93
10	2518242.573	2520242.573	6448.93
11	2518242.573	2520242.573	6448.93
12	2518242.573	2520242.573	6448.93
13	2518242.573	2520242.573	6448.93
14	2518242.573	2520242.573	6448.93
15	2518242.573	2520242.573	6448.93
16	2518242.573	2520242.573	6448.93
17	2518242.573	2520242.573	6448.93
18	2518242.573	2520242.573	6448.93
19	2518242.573	2520242.573	6448.93
20	2518242.573	2520242.573	6448.93
21	2518242.573	2520242.573	6448.93
22	2518242.573	2520242.573	6448.93
23	2518242.573	2520242.573	6448.93
24	2518242.573	2520242.573	6448.93
25	2518242.573	2520242.573	6448.93
26	2518242.573	2520242.573	6448.93
27	2518242.573	2520242.573	6448.93
28	2518242.573	2520242.573	6448.93
29	2518242.573	2520242.573	6448.93
30	2518242.573	2520242.573	6448.93
31	2518242.573	2520242.573	6448.93
32	2518242.573	2520242.573	6448.93

As the engineer or his authorized representative has reviewed the plat and has found it to conform to the standards set forth in the plat, he certifies that the same is a true and correct copy of the original survey records.

DATE: \_\_\_\_\_ BY: \_\_\_\_\_

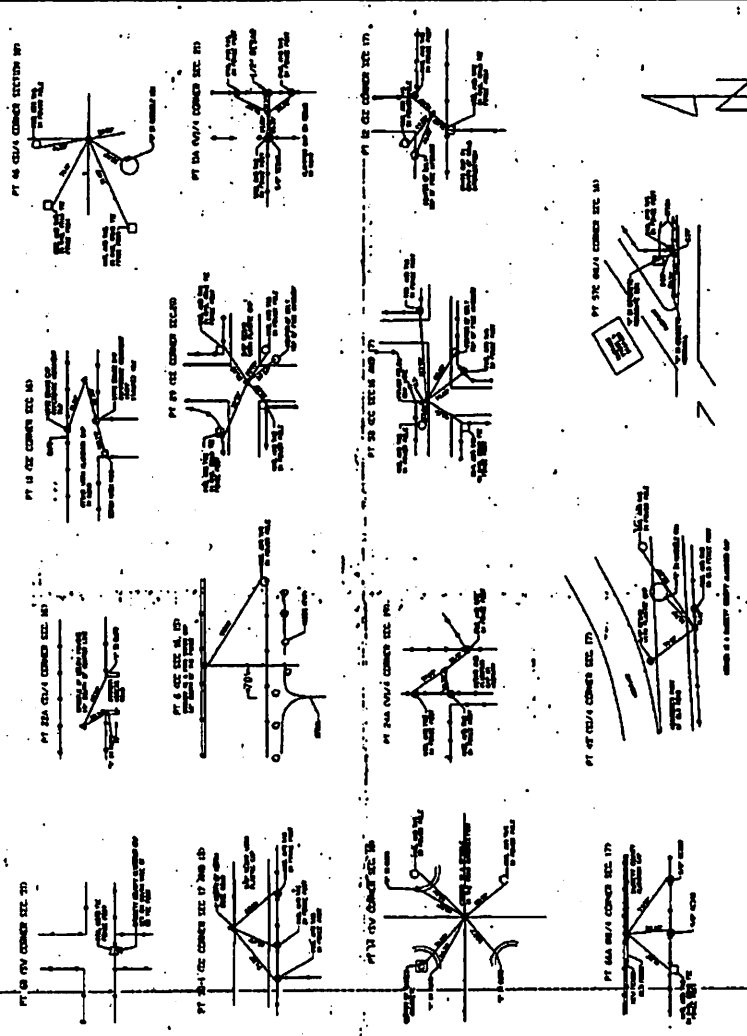
\_\_\_\_\_

*Revised Memo: Page 2 is found in Book 71; Page 653*

653

### CORNER TIES FOR THE CONTROL PLAT OF T3N, R20E, SLB&M

NOTE: TIES ARE NOT TO SCALE



12-15-2005  
 PREPARED BY: J. DAN SQUIPPO  
 2741 NORTH 2500 WEST  
 VERNAL, UTAH 84078  
 (435)789-4152

14 084543 0071 10153