

# CAMBRIDGE WAREHOUSE CONDOMINIUM (AN OFFICE CONDOMINIUM)

A PART OF THE N.W. 1/4 OF SEC. 10, T.4N., R.1W., S.L.B.&M.  
LAYTON CITY, DAVIS COUNTY, UTAH  
NOVEMBER 2008

ALL Lot 1 Cambridge Circle Commercial Subdivision Lot 1 2nd Amended

### SURVEYORS CERTIFICATE

I DALLAS K BUTTARS, HOLDING LICENSE NUMBER 167594 IN ACCORDANCE WITH TITLE 88, CHAPTER 22, PROFESSIONAL ENGINEERS AND LAND SURVEYORS LICENSING ACT, HAVE COMPLETED A SURVEY OF THE PROPERTY DESCRIBED ON THE PLAT IN ACCORDANCE WITH SECTION 17-23-17 AND HAVE VERIFIED ALL MEASUREMENTS AND PLACED MONUMENTS AS REPRESENTED ON THE PLAT.

SIGNED THIS 10<sup>th</sup> DAY OF November 2008

P.L.S. # 167594

SIGNATURE



### OWNERS DEDICATION

WE THE UNDERSIGNED OWNERS OF THE HEREDIN DESCRIBED TRACT OF LAND, HEREBY SET APART AND SUBDIVIDE THE SAME INTO LOTS AND STREETS AS SHOWN ON THIS PLAT AND NAME SAID TRACT CAMBRIDGE WAREHOUSE CONDOMINIUM AND HEREBY DEDICATE, GRANT AND CONVEY TO LAYTON CITY, DAVIS COUNTY, UTAH ALL THOSE PARTS OR PORTIONS OF SAID TRACT OF LAND THOSE CERTAIN STRIPS OR EASEMENTS FOR PUBLIC UTILITY AND DRAINAGE PURPOSES SHOWN HEREDIN, THE SAME TO BE USED FOR INSTALLATION, MAINTENANCE AND OPERATION OF PUBLIC UTILITY SERVICE LINES AND DRAINAGE AS MAY BE AUTHORIZED

SUBMITTED THIS 14<sup>th</sup> DAY OF November 2008  
Not a member, MKC Investments, LLC  
Vice-president, Wells Fargo Bank, NA

### CORPORATE ACKNOWLEDGMENT

STATE OF UTAH, )  
COUNTY OF DAVIS )  
ON THIS 14<sup>th</sup> DAY OF November 2008 PERSONALLY APPEARED BEFORE ME TO wit: )  
PERSONALLY KNOWN TO ME OR PROVED TO ME ON THE BASIS OF )  
SATISFACTORY EVIDENCE AND WHO BY HIS DULY SWORN OR )  
AFFIRMED, DID SAY THAT HE (SHE) IS THE )  
(TITLE OR OFFICE OF THE )  
AND THAT SAID DOCUMENT WAS SIGNED BY HIM (HER) IN BEHALF OF )  
SAID CORPORATION BY AUTHORITY OF ITS BYLAWS, OR RESOLUTION OF )  
ITS BOARD OF DIRECTORS, AND SAID )  
ACKNOWLEDGED TO ME THAT SAID CORPORATION EXECUTED THE SAME )

Dec 2, 2012, )  
COMMISSION EXPIRES )

### CORPORATE ACKNOWLEDGMENT

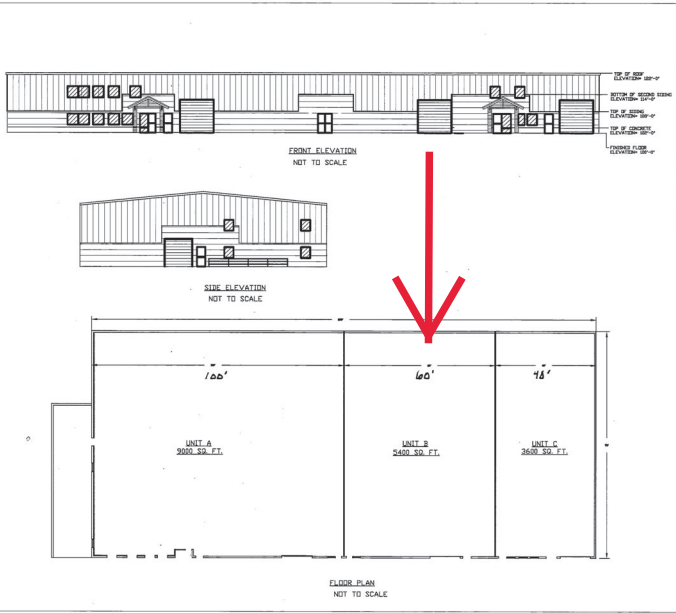
STATE OF UTAH, )  
COUNTY OF DAVIS )  
ON THIS 14<sup>th</sup> DAY OF November 2008 PERSONALLY APPEARED )  
BEFORE ME TO wit: )  
PERSONALLY KNOWN TO ME OR PROVED TO ME ON THE BASIS OF )  
SATISFACTORY EVIDENCE AND WHO BY HIS DULY SWORN OR )  
AFFIRMED, DID SAY THAT HE (SHE) IS THE )  
(TITLE OR OFFICE OF THE )  
AND THAT SAID DOCUMENT WAS SIGNED BY HIM (HER) IN BEHALF OF )  
SAID CORPORATION BY AUTHORITY OF ITS BYLAWS, OR RESOLUTION OF )  
ITS BOARD OF DIRECTORS, AND SAID )  
ACKNOWLEDGED TO ME THAT SAID CORPORATION EXECUTED THE SAME )

Dec 2, 2011, )  
COMMISSION EXPIRES )

### BOUNDARY DESCRIPTION

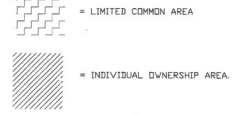
ALL OF LOT 1, CAMBRIDGE CIRCLE COMMERCIAL SUBDIVISION Lot 1 2nd AMENDED, ACCORDING TO THE OFFICIAL PLAT THEREON ON FILE AND OF RECORD IN THE DAVIS COUNTY RECORDERS OFFICE.

BEGINNING AT A POINT SOUTH 89°39'40" EAST 882.00 FEET FROM THE NORTHWEST CORNER OF SECTION 10, TOWNSHIP 4 NORTH, RANGE 1 WEST, SALT LAKE BASE AND MERIDIAN, SAID POINT ALSO BEING THE NORTHWEST CORNER OF LOT 1, CAMBRIDGE CIRCLE COMMERCIAL SUBDIVISION AMENDED AND RUNNING THENCE SOUTH 89°39'40" EAST 376.00 FEET TO THE NORTH LINE OF SAID LOT 1, THENCE SOUTH 0°20'20" WEST 208.24 FEET TO THE WEST LINE OF CAMBRIDGE CIRCLE STREET, THENCE ALONG THE ARC OF A 50 FOOT RADIUS CURVE TO THE LEFT 41.9 FEET ALONG CHORD SOUTH 40°02'44" WEST 48.31 FEET ALONG NORTHERLY LINE OF SAID STREET, THENCE WEST 158.88 FEET TO THE WEST LINE OF SAID LOT 1, THENCE NORTH 0°34'20" EAST 237.15 FEET ALONG THE WEST LINE OF SAID LOT 1 TO THE POINT OF BEGINNING. CONTAINS 0.95 ACRES



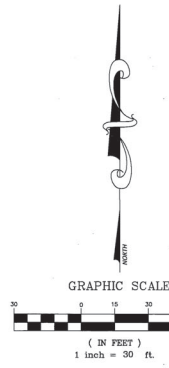
### DESIGNATIONS OF AREAS WITHIN THE PROJECT BOUNDARY

- 1 ALL NUMBERED HATCHED AREAS, (SEE UNIT ENVELOPE DETAIL), ARE DESIGNATED TO BE INDIVIDUAL OWNERSHIP AREAS.
- 2 OPEN SPACE NOT HATCHED WITHIN THE PROJECT BOUNDARY TO BE DESIGNATED AS COMMON AREA.
- 3 ASSIGNED PARKING AREAS SHALL BE DESIGNATED AS LIMITED COMMON AREA. LIMITED TO USE BY THE DESIGNATED UNIT NUMBER.
- 4 ALL COMMON AREAS DESIGNATED ON PLAT TO ALSO BE USED AS PUBLIC UTILITY EASEMENTS.



NOTE:  
ALL UTILITIES ARE PRIVATE AND ARE OWNED AND MAINTAINED BY AN OWNERS ASSOCIATION. THE LANDSCAPING & COMMON AREAS ARE TO BE MAINTAINED BY AN OWNERS ASSOCIATION.

This map is provided solely for the purpose of assisting in locating the property and Cottonwood Title Insurance Agency, Inc. assumes no liability for variation, if any, with any actual survey.



LAYTON CITY ENGINEER  
APPROVED BY THE LAYTON CITY ENGINEER ON THIS 20<sup>th</sup> DAY OF November 2008  
*J. Wood*  
LAYTON CITY ENGINEER

LAYTON CITY PLANNING COMMISSION  
APPROVED BY THE LAYTON CITY PLANNING COMMISSION ON THIS 23<sup>rd</sup> DAY OF September 2008  
*S. Pope*  
CHAIRMAN

LAYTON CITY COUNCIL  
THIS IS TO CERTIFY THAT THIS PLAT AND DEDICATION OF THIS PLAT WERE DULY APPROVED AND ACCEPTED BY THE CITY COUNCIL OF LAYTON CITY, DAVIS COUNTY, UTAH  
THIS 14<sup>th</sup> DAY OF October 2008  
*Maeda Kellman*  
MAYOR  
ATTEST  
LAYTON CITY RECORDER

LAYTON CITY ATTORNEY  
APPROVED BY THE LAYTON CITY ATTORNEY ON THIS 18<sup>th</sup> DAY OF November 2008  
*[Signature]*  
LAYTON CITY ATTORNEY

**LANDMARK SURVEYING, INC.**  
A COMPLETE LAND DEVELOPMENT SERVICE  
4646 S. 3500 W. #A-3, WEST HAVEN, UTAH 84401  
PHONE 801-731-4075

CLIENT: MATT GERTGE  
LOCATION: PART OF THE N.W. 1/4 OF SEC. 10, T.4N., R.1W., S.L.B.&M.  
SURVEYED: FEB. 2008

REVISIONS:  
08-18-08 JB

DRAWN BY: DB  
CHECKED BY: D.B.  
DATE: 02-09-08  
FILE: 0808 CAMBRIDGE CONDO

DAVIS COUNTY RECORDER  
ENTRY 240796-834  
FILED FOR RECORD & RECORDED THIS 2<sup>nd</sup> DAY OF DECEMBER 2008 AT 2:00 PM IN BOOK 466.7 OF RECORDS PAGE 835  
*Rickman Thompson*  
DAVIS COUNTY RECORDER  
BY \_\_\_\_\_ DEPUTY

4889