

11239171

11239171
09/06/2011 03:35 PM \$62.00
Book - 9948 Pg - 1926A-B
GARY W. OTT
RECORDER, SALT LAKE COUNTY, UTAH
PCC OWNERS ASSOC
2505 PARLEYS WY
SLC UT 84109
BY: ELF, DEPUTY - WI *W*

3 p.

Name: PARLEYS CORPORATE CENTER CONDO AMD

Desc: 16-32-22
16-22-283-005 -006

Fee: \$62.00

of pages: THREE

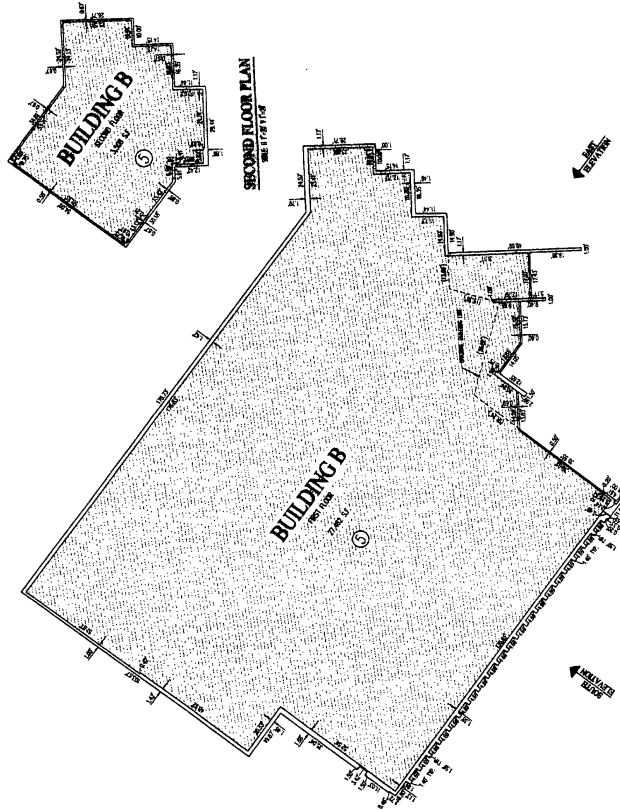
PLAT

SEE ONLINE PLATS AT
[HTTP://REC.CO.SLC.UT.US](http://rec.co.slc.ut.us)

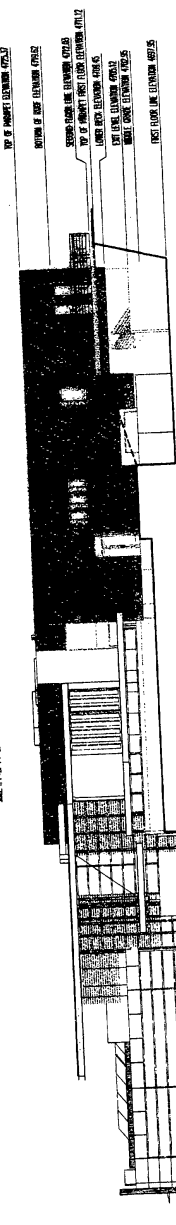
BK 9948 PG 1926

SITE OWNERSHIP LEGEND

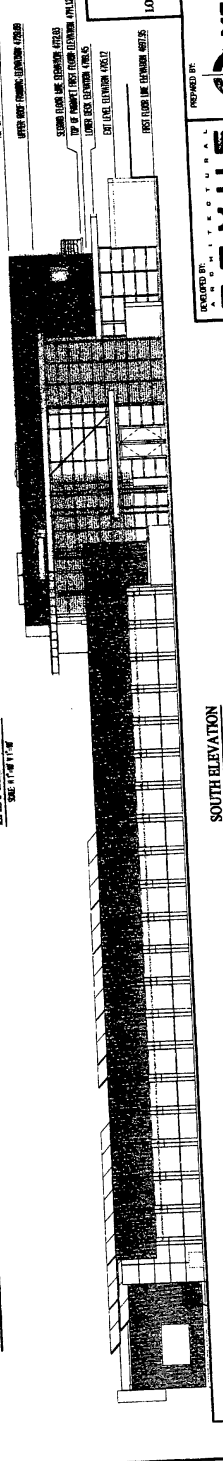
-  PRIVATE OWNERSHIP. SEE THIS SHEET FOR SPECIFIC DETAILS.
-  COMMON OWNERSHIP OF THE SITE. SEE THE APPLICABLE DEVELOPMENT SAFETY PROGRAM, CONSTRUCTION AND MAINTENANCE MANUALS AND RELATED DOCUMENTS. SEE THIS SHEET FOR SPECIFIC DETAILS AND REFERENCES.



FIRST FLOOR PLAN
SCALE 1/4\"/>



EAST ELEVATION
SCALE 1/4\"/>



SOUTH ELEVATION
SCALE 1/4\"/>

THE ARCHITECTURE FLOOR PLAN, SECTION, ELEVATION AND EXTERIOR FINISHES ARE THE PROPERTY OF THE ARCHITECT AND SHALL BE KEPT IN CONFIDENCE. NO PART OF THIS DOCUMENT SHALL BE REPRODUCED OR TRANSMITTED IN ANY FORM OR BY ANY MEANS, ELECTRONIC OR MECHANICAL, INCLUDING PHOTOCOPYING, RECORDING, OR BY ANY INFORMATION STORAGE AND RETRIEVAL SYSTEM, WITHOUT THE WRITTEN PERMISSION OF THE ARCHITECT.

**PARLEY'S CORPORATE CENTER
CONDOMINIUMS AMENDED**
FOR THE EXPANSION OF BLOCK R, UNIT 5
LOCATED WITHIN THE NORTHEAST QUARTER OF SECTION 36, T11N, R11E, S11R, 1
SOUTH PLAINS, COUNTY OF UTAH
BUILDING FLOOR PLANS AND ELEVATIONS, SHEET 2 OF 2
COUNTY RECORDER NO. 11239177



Meridian
ENGINEERING, INC.
1000 SOUTH MAIN STREET, SUITE 200
SALT LAKE CITY, UTAH 84143
TEL: 801.487.1234
WWW.MERIDIANENGINEERING.COM

PREPARED BY:
Nextus
ARCHITECTURAL
301 WEST 1000 SOUTH, SUITE 200
SALT LAKE CITY, UTAH 84143
TEL: 801.487.1234
WWW.NEXTUSARCHITECT.COM

DATE: 01/11/2011
DRAWN BY: [Signature]
CHECKED BY: [Signature]
SCALE: AS SHOWN