

PARLEY'S CORPORATE CENTER CONDOMINIUMS


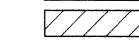
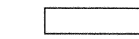
PART OF THE NORTHEAST QUARTER OF SECTION 22

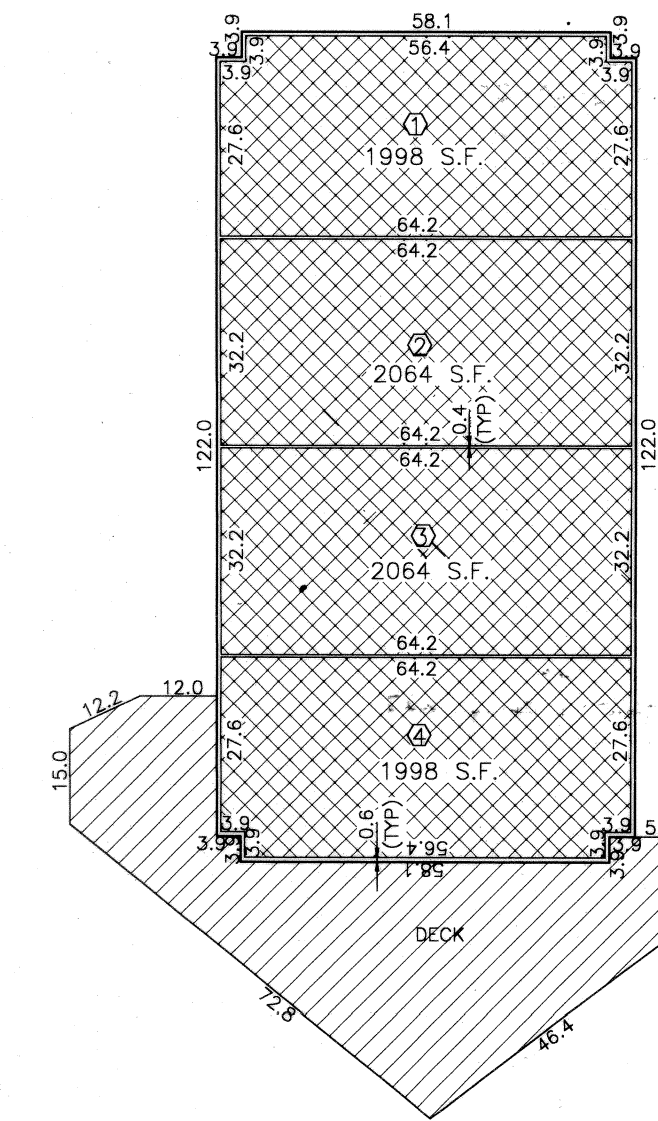
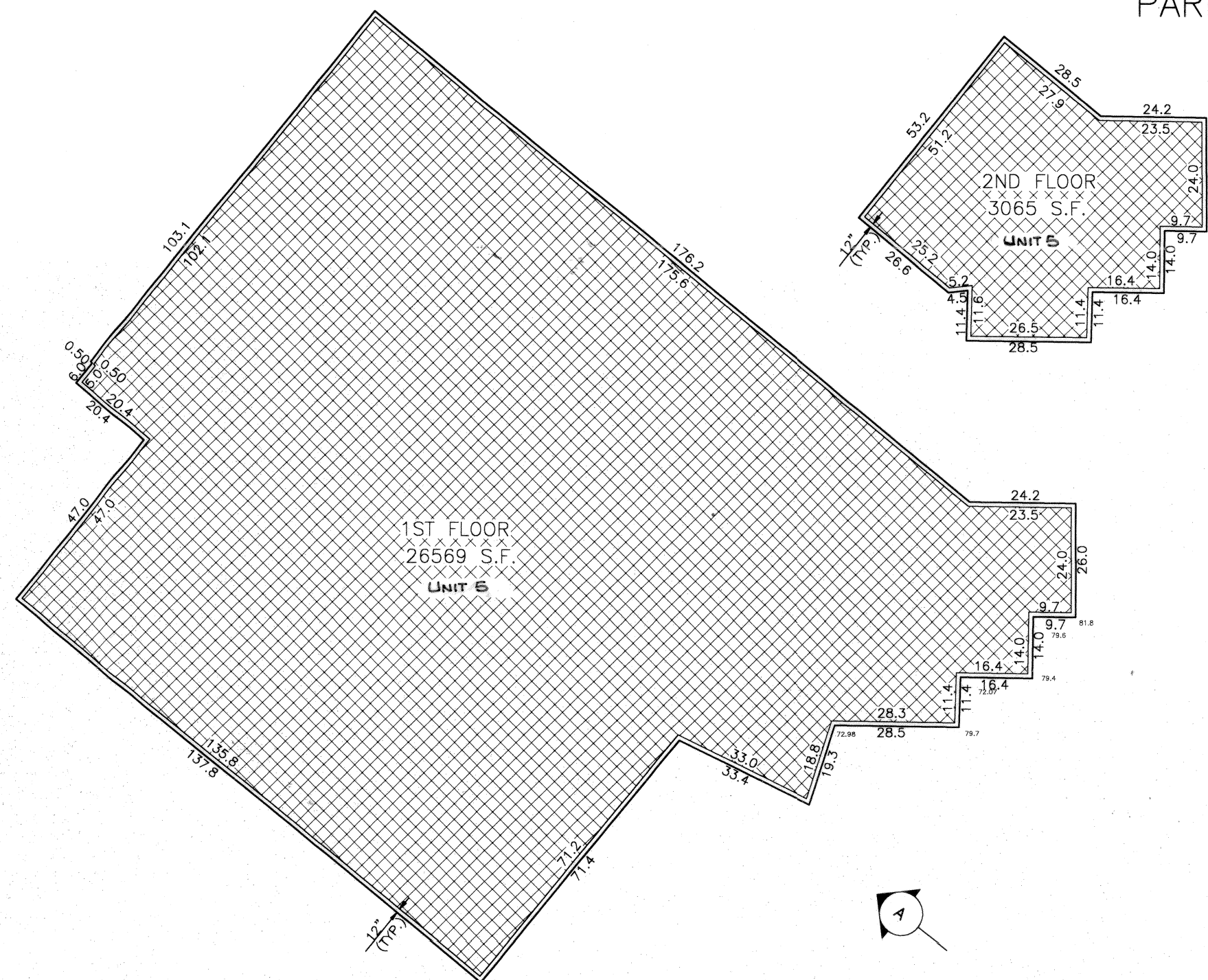
TOWNSHIP 1 SOUTH, RANGE 1 EAST

SALT LAKE BASE AND MERIDIAN

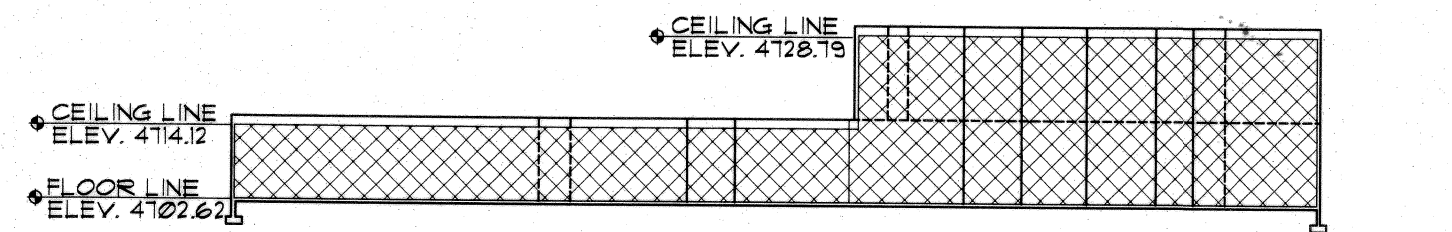


LEGEND

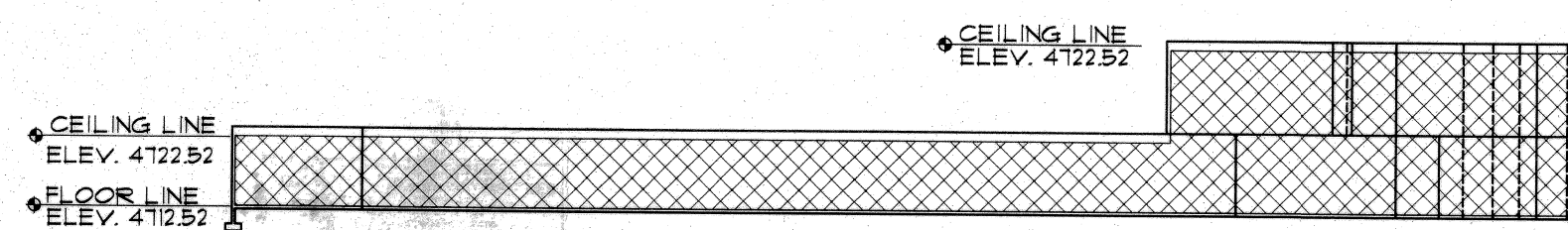
-  PRIVATE OWNERSHIP
-  LIMITED COMMON AREAS AND FACILITIES
-  COMMON AREAS AND FACILITIES



FLOOR PLAN

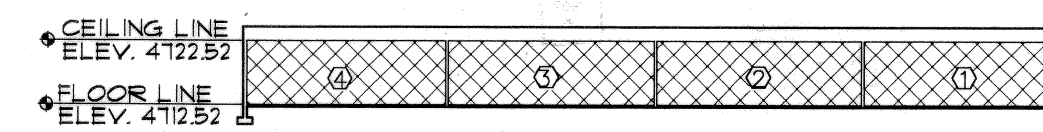


ELEVATION (A)

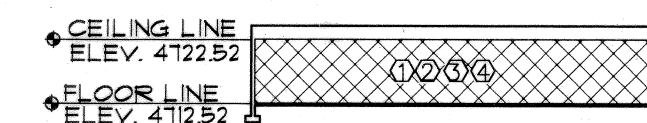


ELEVATION (B)

BUILDING B



ELEVATION (A)

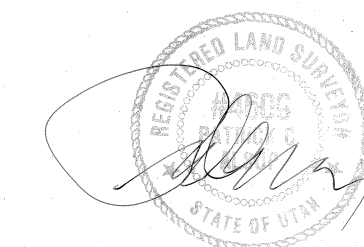


ELEVATION (B)

BUILDING A

NOTE

1. BENCHMARK ELEVATION #655.43 - (SLOBM-5035) 7/8" DOMED BRASS RIVET IN WATER VALVE BOX APPROXIMATELY 8" SOUTH OF TBO AT SOUTHEAST CORNER OF THE INTERSECTION OF KING STREET AND PARLEY'S WAY (2400 EAST AND 2205 SOUTH) - U.S.G.S. DATUM
2. THIS SURVEY MEETS THE ACCURACY STANDARDS WITH A MINIMUM LINEAR CLOSURE OF 1:15,000.



VanWagoner and Associates
 ENGINEERING & PLANNING TRANSPORTATION & CIVIL
 SURVEYING & SAFETY
 3808 SOUTH WEST TEMPLE (801) 262-6762
 SALT LAKE CITY, UTAH 84115 FAX 262-8993

sheet contents

PARLEY'S CORPORATE CENTER CONDOMINIUMS
 PART OF THE NORTHEAST QUARTER OF SECTION 22
 TOWNSHIP 1 SOUTH, RANGE 1 EAST
 SALT LAKE BASE AND MERIDIAN

PAGE 2 OF 2

2004P-244