

WASHINGTON COUNTY RECORDS
 RECORDS SECTION
 201600010789

- ① H-4-2-11-122 TAUN LAND LLC 20160013714
- ② H-4-2-11-121 COLFIT LLC SERIES 7 20160028013
- ③ H-4-2-11-12 COLFIT LLC SERIES 9 20160028012 B.169 P.319 172 281 226 977
- ④ H-4-2-11-113 GARLAND METCALF B.724 P.825
- ⑤ H-4-2-11-115 FLORENCE HOWELLS B.263 P.73-74
- ⑥ H-4-2-11-116 V.L. & ZELMA BREEDLOVE B.169 P.321
- ⑦ H-4-2-11-117 A.G. METCALF B.824 P.825
- ⑧ H-4-2-11-118 K. & MARCELENE HOWELLS B.169 P.323
- ⑨ H-4-2-11-119 LORINDA BELCERS - TAD SHAW 20160034090
- ⑩ H-4-2-11-120 SALL ANN EATON 20160034091

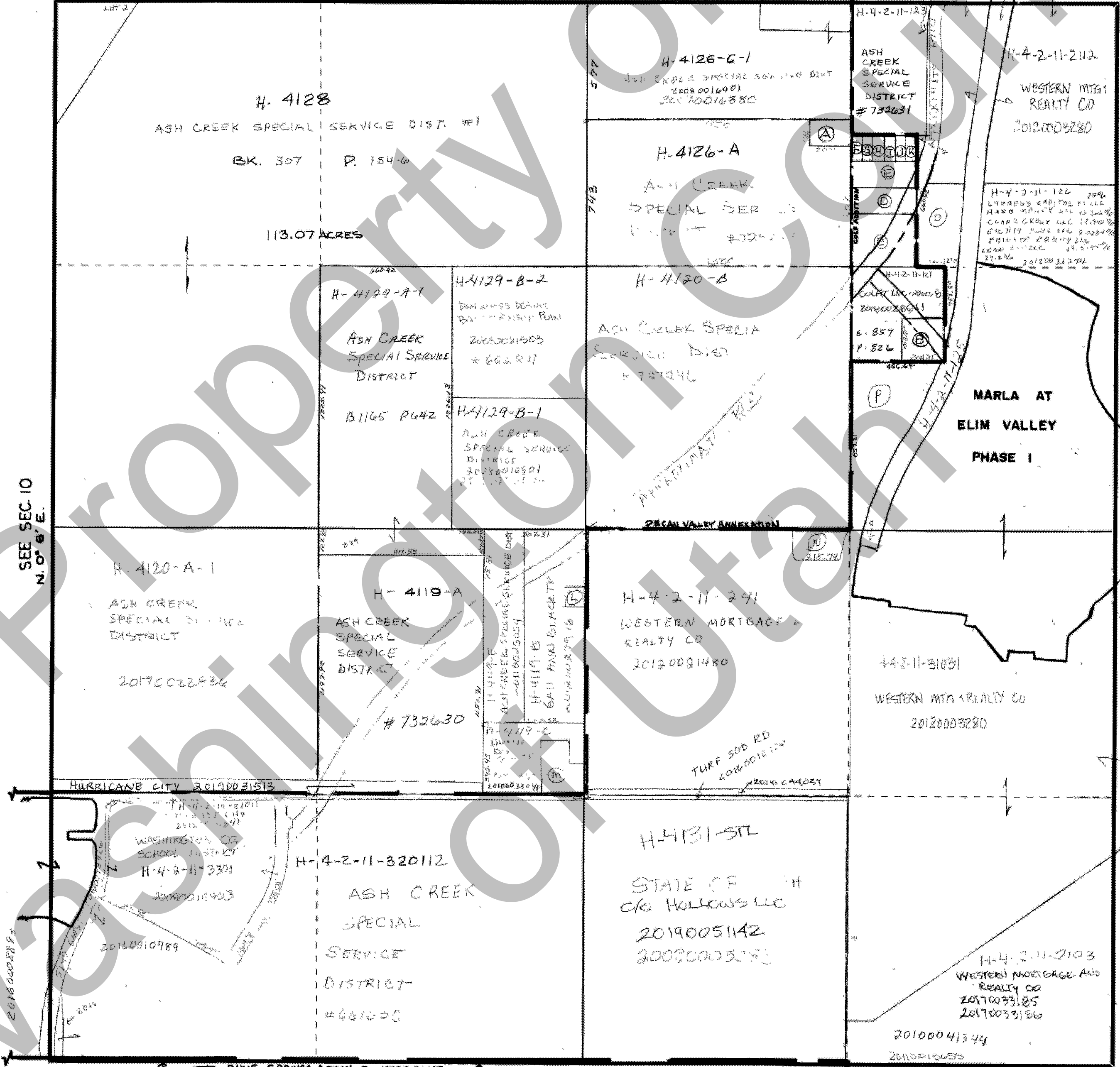
SECTION 11
T42S -- R14 W

SALT LAKE BASE & MERIDIAN
 SCALE: ONE INCH=400 FEET

WASHINGTON COUNTY, UTAH

- ① H-4-2-11-123 CARSON TRAIT 20160016502
- ② H-4-2-11-240 DIXIE ESCALANTE RES 20080035461
- ③ H-4-2-11-127 CYPRESS CAPITAL 25% HARD MONEY LLC 13.200%
 CLEAR GROUP LLC 37.99% EIGHTY PLUS LLC 37.99%
 PRIVATE EQUITY LLC 13.5195% LOAN ONE LLC 27.3%
- ④ H-4-2-11-128 CYPRESS CAPITAL XI LLC 25%
 HARD MONEY LLC 13.200%
 EIGHTY PLUS LLC 37.99% PRIVATE EQUITY LLC 13.5195%
 LOAN ONE LLC 27.3%

SEE SEC. 2
 S89° 45' W 80.26



SEE SEC. 10
 N. 0° 6' E.

SEE SEC. 12
 N. 0° 6' E. 80.00

S 89° 51' W 80.30

SEE SEC. 14