

(Attached Rider)

Commencing 1015.86 feet North and 564.44 feet East from Monument at Intersection of State Street and 4500 South Street, North 0°10'02" East 566.19 feet, South 88°49'30" East 313.07 feet, South 46°43'53" East 27.59 feet, South 66°33'02" East 27.69 feet, South 86°56'50" East 32.92 feet, North 52°29'17" East 43.3 feet, North 68°55'05" East 49.07 feet, South 50°00'33" East 126.7 feet, North 59°04'38" East 82.52 feet to Westerly line of Gordon Lane, South 35°07' East 208.4 feet, South 46°16' East 215.8 feet, South 50°27'45" East 382.39 feet, South 27°29'34" West 698.87 feet, South 61° West 150.84 feet, North 0°04'15" West 32.77 feet, North 73°07'30" West 117.74 feet, North 61°36'35" West 27.16 feet, North 25°55'25" West 97.51 feet, North 14°24' East 49.5 feet, North 87°36'47" East 114.55 feet, North 3°10'43" West 387.12 feet, North 32°59'35" West 58.95 feet, North 23°36'44" West 46.03 feet, North 7°17'45" West 16.69 feet, North 6°18'37" West 56.72 feet, South 82° West 261.36 feet, South 89°52'25" West 371.81 feet to beginning less Salt Lake City 0.17 Acre Tract 17.32 Acre being in Block 8 Ten Acre Plat A,

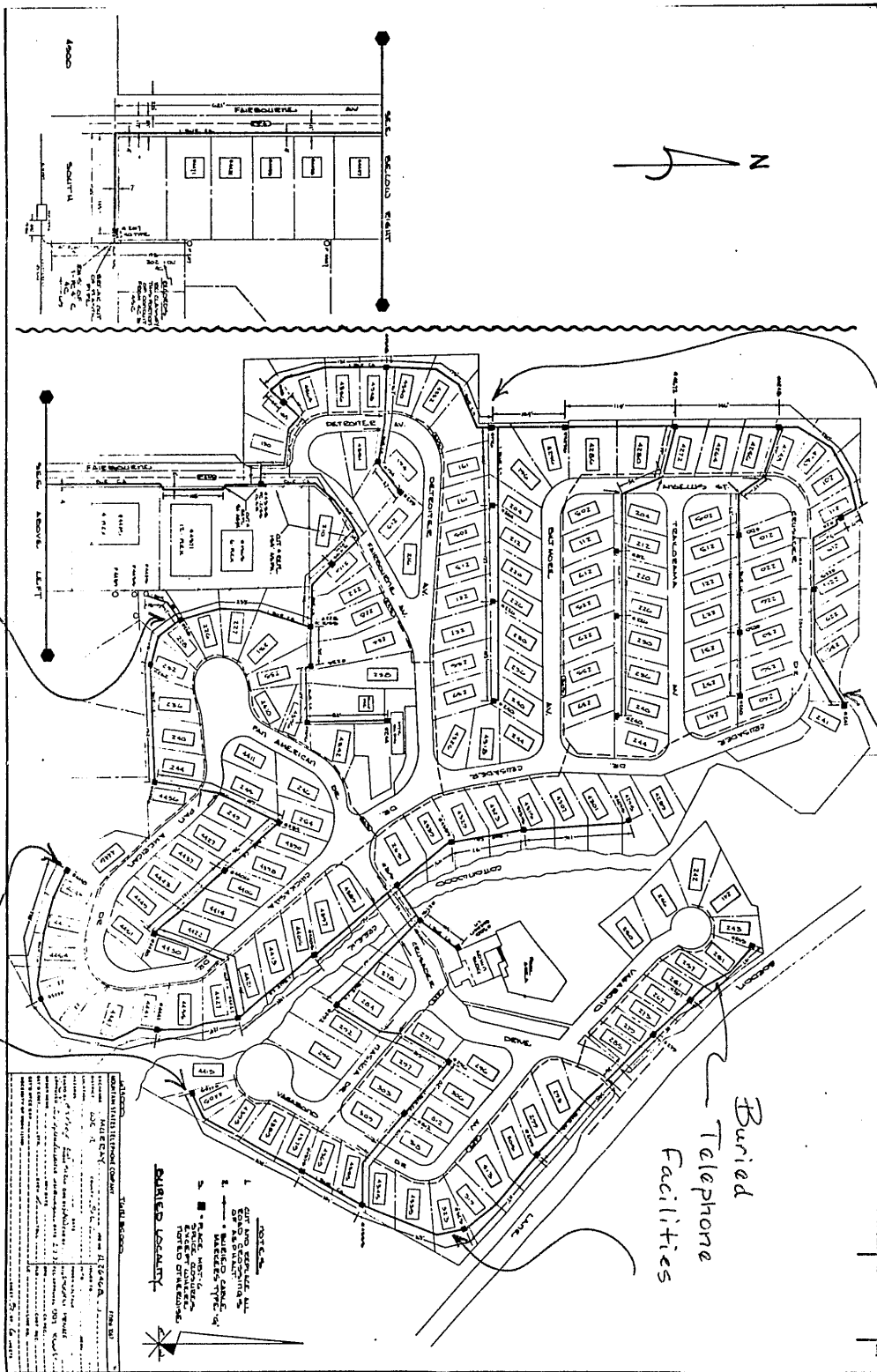
Also,

Commencing 661.72 feet North and 800.51 feet East and North 89°27'54" West 330 feet from Monument at Intersection of State Street and 4500 South Street, North 0°31'11" West 350.83 feet, North 89°52'25" East 28.32 rods, North 82° East 15.86 rods, South 6°18'37" East 56.72 feet, South 7°17'48" East 16.69 feet, South 23°36'44" East 46.03 feet, South 32°59'35" East 58.95 feet, South 3°10'43" East 387.12 feet, South 87°36'47" West 114.55 feet, South 88°18'03" West 78.88 feet, South 87°38'36" West 279.17 feet, North 0°49' West 159.47 feet, South 89°58' East 25.22 feet, North 30° East 107.79 feet, North 88°02' East 120.07 feet, North 115.9 feet, West 50 feet, South 50 feet, West 70 feet, South 65°21' West 87.8 feet, South 0°18'37" East 24.24 feet, North 89°27'54" West 148.5 feet, South 0°18'37" East 102.5 feet, North 89°27'54" West 181.5 feet to beginning 6.75 Acres being in Block 8 Ten Acre Plat A.

BOOK 5436
PAGE 720

Buried Telephone Facilities

BOOK 5436 PART 721 EXHIBIT "A"



Buried Telephone Facilities

Buried Telephone Facilities