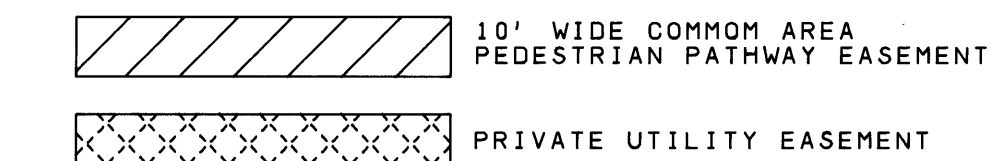
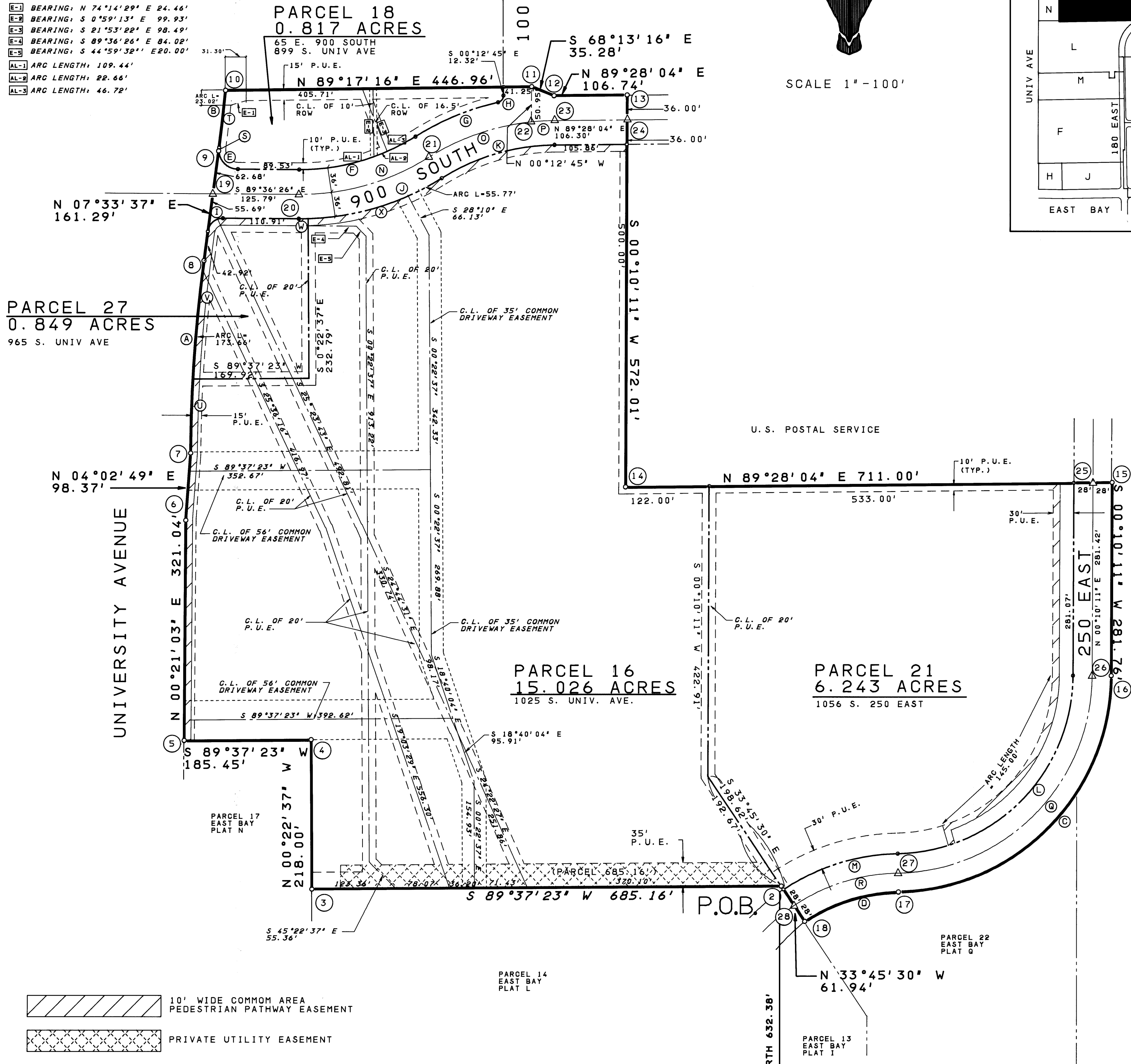


C.L. DATA AND ARC LENGTHS

1	BEARING: N 74°14'29" E 24.44'
2	BEARING: S 0°59'13" E 99.93'
3	BEARING: S 21°53'22" E 98.49'
4	BEARING: S 89°36'26" E 84.02'
5	BEARING: S 44°59'32" E 200.00'
6	ARC LENGTH: 109.44'
7	ARC LENGTH: 22.66'
8	ARC LENGTH: 46.72'

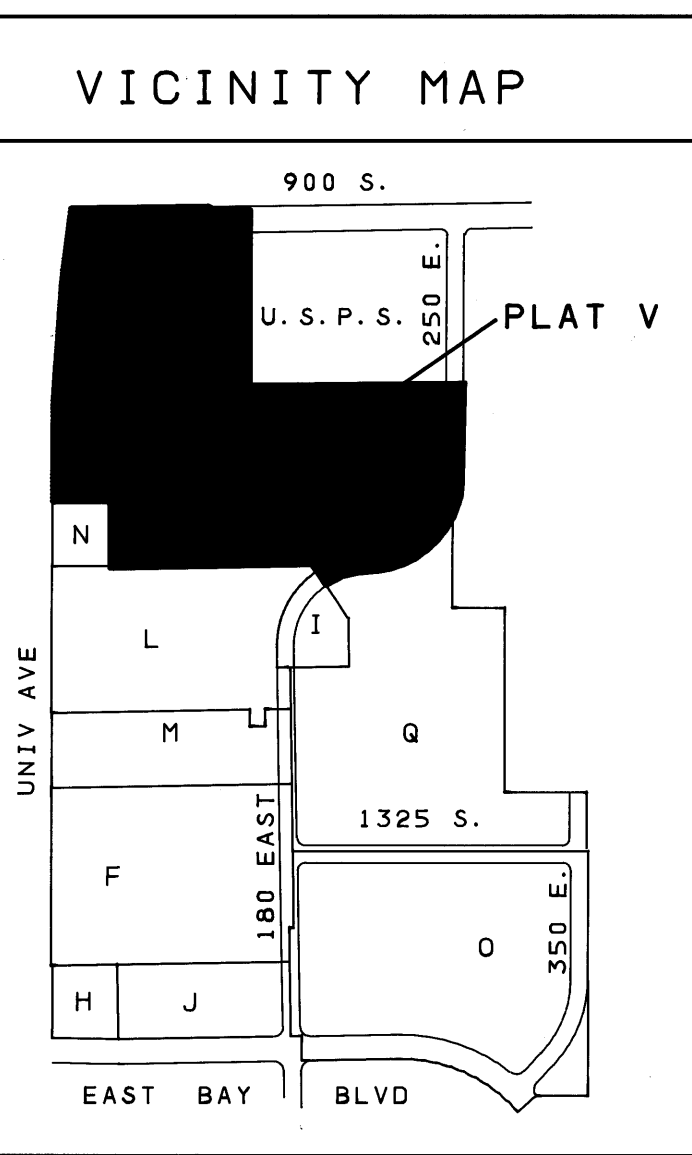
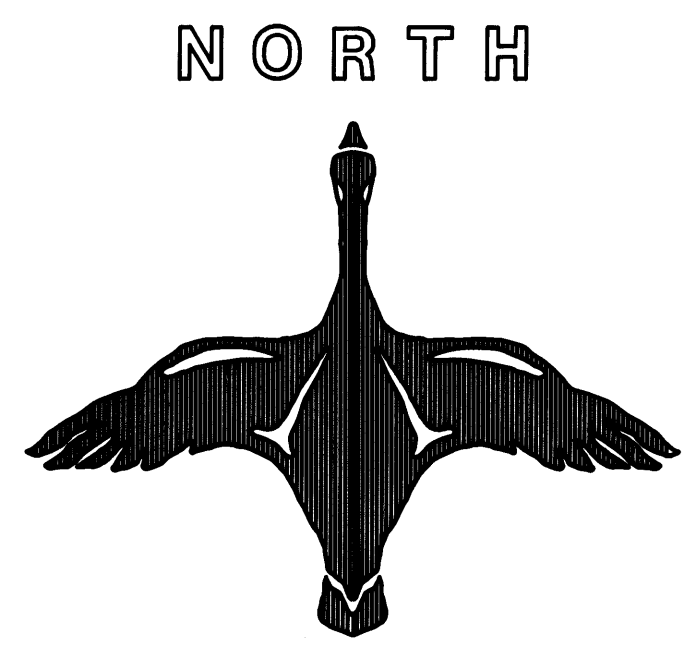


SOUTHWEST CORNER SEC 7, T7S, R3E SLM BRASS CAP MONUMENT IN CONCRETE

SPANISH FORK TRIANGULATION STATION
N 33°45'30" W
61.94'

THIS PLAT PREPARED BY PROVO CITY ENGINEERING STAFF

4383-55



ACCEPTANCE BY MAYOR
THE MAYOR OF THE CITY OF PROVO, COUNTY OF UTAH, ACCEPTS THIS RECORD OF SURVEY MAP OF EAST BAY P.U.D.
THIS 29th DAY OF JANUARY A.D. 1992
Joseph A. Jenkins
APPROVED BY MAYOR JOSEPH A. JENKINS
Manilyn J. Perry
ATTEST: CLERK RECORDER APPROVED: ENGINEER

COMMUNITY DEVELOPMENT DIRECTOR APPROVAL
APPROVED THIS 29th DAY OF JANUARY A.D. 1992 BY THE PROVO CITY COMMUNITY DEVELOPMENT DIRECTOR.
John A. Camette
DIRECTOR

RESERVATION OF COMMON AREA
PROVO CITY CORPORATION IN RECORDING THIS PLAT OF EAST BAY PLAT V A PLANNED UNIT DEVELOPMENT HAS DESIGNATED CERTAIN AREAS OF LAND AS COMMON AREAS. INTENDED FOR THE USE BY THE OWNERS IN EAST BAY BUSINESS CENTER P.U.D. FOR INGRESS, EGRESS, RECREATION, AND OTHER RELATED ACTIVITIES. THE DESIGNATED AREAS ARE NOT DEDICATED HEREBY FOR THE USE BY THE GENERAL PUBLIC BUT ARE RESERVED FOR THE COMMON USE AND ENJOYMENT OF THE OWNERS IN EAST BAY BUSINESS CENTER P.U.D. MORE FULLY PROVIDED IN THE DECLARATION OF COVENANTS, CONDITIONS AND RESTRICTIONS, APPLICABLE TO EAST BAY BUSINESS CENTER P.U.D. SAID DECLARATION OF COVENANTS, CONDITIONS AND RESTRICTIONS IS HEREBY INCORPORATED AND MADE A PART OF THIS OFFICIAL PLAT AND BECOMES EFFECTIVE UPON THE DATE THAT THIS PLAT IS RECORDED IN THE OFFICIAL RECORDS OF UTAH COUNTY.

SURVEYORS CERTIFICATE
I, ALAN L. YORK, DO HEREBY CERTIFY THAT I AM A REGISTERED LAND SURVEYOR, AND THAT I HOLD CERTIFICATE NO. 5040 AS PRESCRIBED UNDER THE LAWS OF THE STATE OF UTAH. I FURTHER CERTIFY THAT THE DESCRIPTION OF THE LAND SURFACE UPON WHICH THIS PLAT WILL BE CONSTRUCTED EAST BAY PLAT V, A PLANNED UNIT DEVELOPMENT, IS FURTHER CERTIFIED THAT THE REFERENCE MARKERS SHOWN ON THIS PLAT ARE LOCATED AS SHOWN AND ARE SUFFICIENT TO READILY RETRACE OR RE-ESTABLISH THIS SURVEY.
Alan L. York
REGISTERED LAND SURVEYOR

LEGAL DESCRIPTION
THE OUTSIDE BOUNDARY DESCRIPTION OF EAST BAY P.U.D., PLAT V BOUNDON THE WEST BY UNIVERSITY AVENUE AND ON THE EAST BY A PORTION OF 250 EAST STREET WITH 900 SOUTH STREET PASSING THROUGH THE NORTHERN PORTION OF THE PLAT, PROVO, UTAH, BEGINNING AT THE NORTHEAST CORNER OF PARCEL 14, PLAT L, EAST BAY P.U.D., UTAH COUNTY, UTAH, THE POINT OF BEGINNING IS NORTH 632.38 FEET AND EAST 132.14 FEET FROM THE SOUTHWEST CORNER OF SECTION 7, TOWNSHIP 7 SOUTH, RANGE 3 EAST, SALT LAKE MERIDIAN, THENCE SOUTH 89 DEGREES 37 MINUTES 23 SECONDS WEST FOR A DISTANCE OF 685.16 FEET ALONG THE NORTH LINE OF PARCEL 14 TO THE SOUTHEAST CORNER OF PARCEL 17, PLAT N, THENCE NORTH 00 DEGREES 22 MINUTES 37 SECONDS WEST FOR A DISTANCE OF 218.00 FEET ALONG THE EAST LINE OF SAID PARCEL 17, THENCE NORTH 00 DEGREES 37 MINUTES 25 SECONDS WEST FOR A DISTANCE OF 185.45 FEET ALONG THE NORTH LINE OF SAID PARCEL 17 TO THE EAST LINE OF UNIVERSITY AVENUE, THENCE NORTH 00 DEGREES 03 MINUTES 03 SECONDS EAST FOR A DISTANCE OF 321.04 FEET ALONG THE EAST LINE OF UNIVERSITY AVENUE FOR THIS COURSE AND THE NEXT FOUR COURSES, THENCE NORTH 00 DEGREES 02 MINUTES 10 SECONDS EAST FOR A DISTANCE OF 98.37 FEET TO A NON-TANGENT POINT ON A 2225.83 FOOT RADIUS CURVE TO THE RIGHT, THENCE ALONG A CURVE TO THE RIGHT HAVING A RADIUS OF 2225.83 FEET AND AN ARC LENGTH OF 281.55 FEET, BEING SUBTENDED BY A CHORD OF NORTH 03 DEGREES 56 MINUTES 06 SECONDS EAST FOR A DISTANCE OF 281.46 FEET, THENCE NORTH 07 DEGREES 33 MINUTES 37 SECONDS EAST FOR A DISTANCE OF 161.29 FEET, THENCE ALONG A CURVE TO THE LEFT HAVING A RADIUS OF 2357.83 FEET AND AN ARC LENGTH OF 88.98 FEET, BEING SUBTENDED BY A CHORD OF NORTH 06 DEGREES 28 MINUTES 45 SECONDS EAST FOR A DISTANCE OF 88.97 FEET MORE OR LESS TO THE SOUTH LINE OF THE STUBBS' ADDITION TO PROVO CITY, UTAH (A SUBDIVISION), THENCE NORTH 89 DEGREES 17 MINUTES 16 SECONDS EAST FOR A DISTANCE OF 446.96 FEET ALONG THE SOUTH LINE OF SAID SUBDIVISION MORE OR LESS TO THE SOUTHWEST CORNER OF SAID SUBDIVISION, THENCE SOUTH 68 DEGREES 13 MINUTES 16 SECONDS EAST FOR A DISTANCE OF 35.28 FEET TO A POINT ON THE NORTH LINE OF 900 SOUTH STREET (A 72 FOOT RIGHT OF WAY), THENCE NORTH 28 DEGREES 04 SECONDS EAST FOR A DISTANCE OF 106.74 FEET ALONG THE NORTH LINE OF THE STREET, THENCE SOUTH 00 DEGREES 10 MINUTES 11 SECONDS WEST FOR A DISTANCE OF 572.01 FEET LEAVING THE NORTH LINE OF THE STREET ALONG THE WEST LINE OF THE U.S.P.S. PROPERTY TO SAID PROPERTY'S SOUTHWEST CORNER, THENCE NORTH 89 DEGREES 28 MINUTES 04 SECONDS EAST FOR A DISTANCE OF 711.00 FEET ALONG THE SOUTH LINE OF THE U.S.P.S. PARCEL AND THE EASTWARD PROLONGATION OF SAID LINE TO THE EAST LINE OF 250 EAST STREET (A 56 FOOT RIGHT OF WAY), THENCE SOUTH 00 DEGREES 10 MINUTES 11 SECONDS WEST FOR A DISTANCE OF 281.76 FEET ALONG THE EAST RIGHT OF WAY LINE OF SAID 250 EAST STREET AND THE NEXT TWO COURSES, THENCE ALONG A CURVE TO THE RIGHT HAVING A RADIUS OF 316.41 FEET AND AN ARC LENGTH OF 490.55 FEET, BEING SUBTENDED BY A CHORD OF SOUTH 44 DEGREES 35 MINUTES 05 SECONDS WEST FOR A DISTANCE OF 442.88 FEET (THE WESTERN 31.88 FEET OF THIS CURVE BEING THE SAME AS A CURVE ALONG THE NORTHERN PORTION OF PARCEL 22, PLAT G, REVISED), THENCE ALONG A CURVE TO THE LEFT HAVING A RADIUS OF 254.58 FEET AND AN ARC LENGTH OF 145.55 FEET, BEING SUBTENDED BY A CHORD OF SOUTH 72 DEGREES 37 MINUTES 15 SECONDS WEST FOR A DISTANCE OF 143.58 FEET (ALSO ALONG THE NORTHERN PORTION OF SAID PARCEL 22 TO THE NORTH CORNER OF PARCEL 13, PLAT I), THENCE NORTH 33 DEGREES 45 MINUTES 30 SECONDS WEST FOR A DISTANCE OF 61.94 FEET RADIALLY CROSSING THE STREET TO THE POINT OF BEGINNING.

SAID PROPERTY CONTAINS 25.142 ACRES MORE OR LESS.

THE BASIS OF BEARING IS SOUTH 37 DEGREES 15 MINUTES 07 SECONDS EAST FROM THE SOUTHWEST CORNER OF SECTION 7, TOWNSHIP 7 SOUTH, RANGE 3 EAST, SALT LAKE MERIDIAN TO THE SPANISH FORK TRIANGULATION STATION.

ALL SUBJECT TO RESTRICTIONS, EASEMENTS, RIGHTS-OF-WAY, TITLE INSURANCE EXCEPTIONS AND FEDERAL OR STATE OWNERSHIP OF ARTIFICIALLY FILLED LANDS, SUBMERGED LANDS AND LANDS LYING BELOW THE ORDINARY HIGH WATER MARK OF UTAH LAKE.

OWNER'S DEDICATION
PROVO CITY CORPORATION AND EAST BAY DEVELOPMENT COMPANY, INC., OWNERS OF THE PARCEL OF LAND WHICH IS SHOWN UPON THE PLAT OF EAST BAY PLAT V AND UNIT DEVELOPMENT, DO HEREBY DEDICATE THE STREETS AND OTHER PUBLIC AREAS AS INDICATED HEREON FOR PERPETUAL USE OF THE PUBLIC, AND DO HEREBY OFFER AND CONVEY TO ALL PUBLIC UTILITY AGENCIES AND THEIR SUCCESSORS AND ASSIGNS A PERMANENT EASEMENT AND RIGHT-OF-WAY AS SHOWN BY THE AREAS MARKED 'UTILITY EASEMENT' OR 'COMMON AREA' ON THE WITHIN PLAT FOR THE CONSTRUCTION AND MAINTENANCE OF SUBTERRANEAN ELECTRICAL, TELEPHONE, CABLE TELEVISION, NATURAL GAS, SEWER AND WATER APPURTENANCES TOGETHER WITH THE RIGHT OF ACCESS THEREON.
Joseph A. Jenkins
PRESIDENT - BARRY L. ECKMAN MAYOR - JOSEPH A. JENKINS
EAST BAY DEVELOPMENT COMPANY

ACKNOWLEDGEMENT
STATE OF UTAH } s.s.
COUNTY OF UTAH } s.s.
ON THE 30 DAY OF JAN A.D. 1992 PERSONALLY APPEARED BEFORE ME THE SIGNERS OF THE FOREGOING DEDICATION WHO DULY ACKNOWLEDGE TO ME THAT THEY DID EXECUTE THE SAME.
Randall J. Childs
MY COMMISSION EXPIRES 7-28-92 NOTARY PUBLIC

CURVE DATA TABLE

CURVE A Δ = 7°15'00" R = 2225.830' T = 141.012' L = 281.647' LC = 291.437' LCB = N 3°56'06" E	CURVE I Δ = 82°49'56" R = 19.407' T = 31.805' L = 291.437' LCB = N 48°58'36" E	CURVE Q Δ = 89°29'49" R = 288.407' T = 282.578' L = 403.685' LCB = N 44°35'05" E
CURVE B Δ = 2°09'44" R = 2357.830' T = 44.493' L = 88.975' LC = 88.970' LCB = N 6°28'45" E	CURVE J Δ = 32°37'40" R = 316.407' T = 112.976' L = 216.854' LCB = N 74°04'44" E	CURVE R Δ = 32°45'30" R = 282.578' T = 5.277' L = 161.562' LC = 159.370' LCB = N 7°29'15" E
CURVE C Δ = 88°49'49" R = 316.407' T = 310.013' L = 490.551' LC = 442.876' LCB = S 44°35'05" W	CURVE K Δ = 31°42'10" R = 316.400' T = 89.157' L = 173.742' LC = 171.534' LCB = N 73°36'59" E	CURVE S Δ = 0°10'42" R = 2357.830' T = 2.639' L = 5.277' LC = 5.277' LCB = N 7°29'46" E
CURVE D Δ = 32°45'30" R = 254.578' T = 74.826' L = 145.553' LC = 143.579' LCB = S 72°37'15" W	CURVE L Δ = 88°49'49" R = 260.407' T = 102.439' L = 403.730' LC = 364.493' LCB = S 44°35'05" W	CURVE T Δ = 2°02'02" R = 2357.830' T = 41.854' L = 83.698' LC = 83.694' LCB = N 6°24'54" E
CURVE E Δ = 97°02'21" R = 316.407' T = 31.670' L = 47.422' LC = 41.954' LCB = S 41°05'15" E	CURVE M Δ = 32°45'30" R = 10.578' T = 91.286' L = 177.570' LC = 75.162' LCB = S 72°37'15" W	CURVE U Δ = 2°46'47" R = 2225.831' T = 86.874' L = 54.004' LC = 107.987' LCB = N 01°41'58" E
CURVE F Δ = 32°37'40" R = 314.000' T = 91.903' L = 178.811' LC = 176.405' LCB = N 74°04'44" E	CURVE N Δ = 32°37'40" R = 350.000' T = 199.312' L = 196.630' LCB = N 74°04'44" E	CURVE V Δ = 4°28'13" R = 2225.831' L = 173.661' LC = 173.617' LCB = N 5°19'31" E
CURVE G Δ = 19°27'43" R = 386.000' T = 66.195' L = 131.115' LC = 130.486' LCB = N 67°29'46" E	CURVE O Δ = 26°18'16" R = 81.784' L = 160.685' LC = 159.787' LCB = N 70°55'02" E	CURVE W Δ = 2°02'33" R = 386.000' T = 6.881' L = 13.760' LC = 13.759' LCB = N 89°22'18" E
CURVE H Δ = 5°23'54" R = 10.000' T = 8.017' L = 15.516' LC = 12.510' LCB = N 38°30'26" E	CURVE P Δ = 5°23'54" R = 350.000' T = 16.500' L = 32.976' LC = 32.964' LCB = N 86°46'07" E	CURVE X Δ = 30°35'07" R = 386.000' T = 105.544' L = 206.052' LC = 203.615' LCB = N 73°03'28" E

STATE PLANE COORDINATE TABLE

#	(Y) NORTHING	(X) EASTING
1	686.230.470	1.956.622.410
2	686.862.662	1.956.754.510
3	686.858.155	1.956.069.920
4	687.076.087	1.956.068.127
5	687.074.867	1.955.882.736
6	687.395.810	1.955.884.701
7	687.429.907	1.955.881.644
8	687.774.621	1.955.910.951
9	687.934.462	1.955.932.166
10	688.022.838	1.955.942.203
11	688.028.392	1.956.388.995
12	688.015.304	1.956.421.751
13	688.016.295	1.956.528.440
14	687.444.456	1.956.526.767
15	687.451.058	1.957.237.534
16	687.169.382	1.957.236.999
17	686.854.052	1.956.925.906
18	686.811.179	1.956.788.921
19	687.872.340	1.955.923.921
20	687.871.478	1.956.049.670
21	687.925.401	1.956.238.702
22	687.977.459	1.956.389.184
23	687.979.316	1.956.422.885
24	687.980.303	1.956.528.353
25	687.450.798	1.957.209.541
26	687.169.445	1.957.208.707
27	686.882.040	1.956.925.418
28	686.834.451	1.956.773.367

PLAT "V"
EAST BAY
INCLUDES A REVISION OF A PORTION OF PLAT "N" AND VACATED PLAT "P"
PLANNED UNIT DEVELOPMENT
PROVO CITY, UTAH COUNTY, UTAH
SCALE 1" = 100 FEET

REGISTERED LAND SURVEYOR NO. 5040 ALAN L. YORK STATE OF UTAH
NOTARY PUBLIC SEAL
CITY ENGINEER SEAL
CLERK RECORDER SEAL
APPROVED FOR RECORDING
JAN 29 1992
NICHOLS R. JONES