

SECTION 9, T.6N., R.2W., S.L.B. & M.

TAXING UNIT: 53,361,511,516

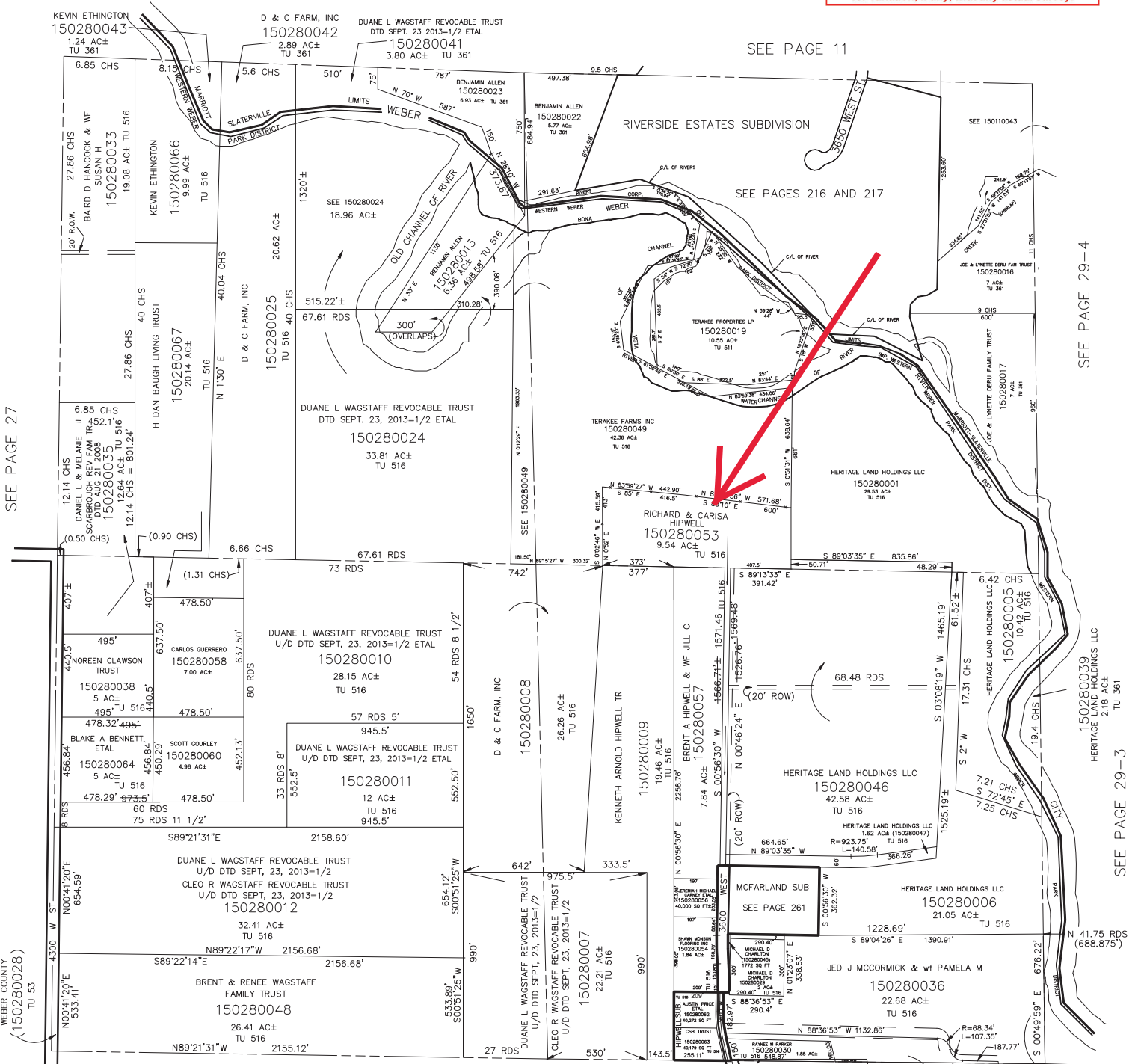
IN MARIOTT-SLATERVILLE CITY & WEBER COUNTY

SCALE 1" = 400'

This map is provided solely for the purpose of assisting in locating the property and Cottonwood Title Insurance Agency, Inc. assumes no liability for variation, if any, with any actual survey.

SEE PAGE 12

SEE PAGE 11



\*NOTE: APPROXIMATE LOCATION OF WEBER RIVER FROM AERIAL PHOTO (1986)

SEE PAGE 47

\*FOR TAX PURPOSES ONLY\*

SEE PAGE 44

SEE 150440005

SEE PAGE 27

SEE PAGE 29-4

SEE PAGE 29-3